



# *Limousin Sale*

**Friday, April 3, 2009 • 12:30 p.m.**

**at the**

**Georgia National Fairgrounds  
Beef Barn**

**Perry, Georgia**





# Limousin Sale

Friday, April 3, 2009 • 12:30 p.m.

at the

**Georgia National Fairgrounds Beef Barn  
Perry, Georgia**



## SCHEDULE OF EVENTS

### Thursday, April 2

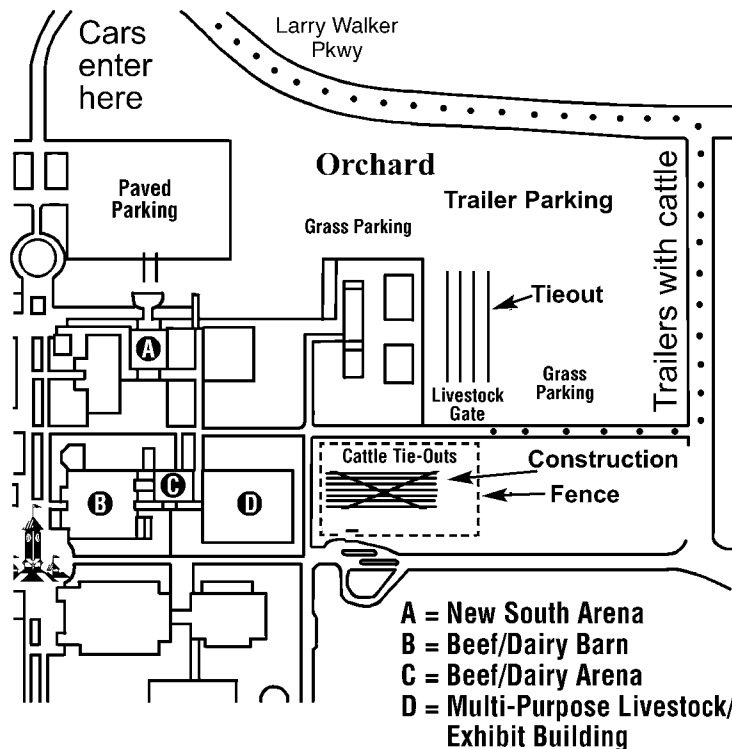
12 Noon Trade Show Opens

### Friday, April 3

8:30 a.m. Trade Show Opens

9:30 a.m. Georgia Limousin Association  
Annual Meeting  
Beef Barn – Coffee and Donuts

12:30 p.m. Georgia Beef Expo Limousin Sale  
Beef Barn



*Sale Management By:*  
**Georgia Limousin Association**

*President*  
**Calvin Minchew**

*Vice President*  
**Josh White**

*Secretary/Treasurer*  
**Lillian Youngblood**

*Auctioneer:*  
**Carroll T. Cannon**

*Sale Staff:*  
**Thad Combs, Limousin World**  
**Paul Wall**

*Lodging:*  
**Best Western**  
 201 Lect Dr. • 478/987-8777 or 800/528-1234

**Days Inn and Suites**  
 205 Lect Dr., Exit 135 • 478/218-5200

*Catalog Request:*  
**Lillian Youngblood**  
 229/567-4044 • 229/567-1584 Cell

# CONSIGNORS

	Bulls	Females		Bulls	Females
<p><b>Oleo Ranch</b> Todd and Holly Alford P.O. Box 128 Bowman, GA 30624 706/207-9454 holly-gccpa@bellsouth.net</p> <p><b>Howard Limousin Farm</b> Larry Howard 1350 Old Chattanooga Valley Rd. Flintstone, GA 30725 706/931-2940 423/596-3819</p> <p><b>Edwards Limousin Cattle</b> Nicholas Edwards 290 Willard Edwards Rd. Beaulaville, NC 28518 910/298-5297 910/290-1424 (W) npedwards07@yahoo.com</p> <p><b>Minchew Farms</b> Calvin and Brenda Minchew 9001 Hawkinsville Rd. Macon, GA 31216 478/781-0604 478/951-1697 (C) minchewfarms@bellsouth.net</p> <p><b>Big D Limousin</b> Donnie or Sky Davis 971 Hwy. 211 NE Winder, GA 30680 770/867-4781 770/868-6668 littledlimousin@hotmail.com</p> <p><b>White Acres Limousin</b> Josh White 167 White Dr. Stockbridge, GA 30281 770/898-3942</p>		<p>8, 8A, 17</p> <p>22, 23</p> <p>1</p> <p>5, 5A, 9, 9A, 13, 14, 21</p> <p>4, 4A, 6, 6A</p> <p>31</p> <p>7, 7A, 10, 10A, 32, 33</p>	<p><b>Oak Knoll Farm</b> Tom Dance 2032 Leesville Rd. Clinton, SC 29325 864/833-3329 864/993-2870 (W) tadance@charter.net</p> <p><b>S &amp; R Cattle Farms</b> Jeremy Dorminey 2520 New Hope Rd. Ambrose, GA 31512 912/359-3757 912/389-0761 (W) jeremy@sandcastle.com</p> <p><b>Williams Limousin Farm</b> Morris and Nathan Williams 6160 Broadwater Trail Cumming, GA 30040 770/887-3708 404/886-8003 (W) nathan@williamslimousinfarm.com</p> <p><b>Pleasant Acres Limousin</b> Sid Arnold 3870 Crabapple Hollow Rd. Nicholson, GA 30565 706/546-9039</p> <p><b>Deer Valley Farm</b> Jonathan Perry 11 Fred Clark Rd. Fayetteville, TN 37334 931/433-1895</p> <p><b>Light Farms</b> Shawn, Leann, Ashlynn and Braxton 217 Shepards Chapel Rd. Rogersville, TN 37857 423/360-1578 Shawn 423/358-0155 Leann</p>		<p>11, 12, 19</p> <p>15, 18</p> <p>3 (Planned Mating), 28</p> <p>34 (Prospect Steer)</p> <p>29, 30</p> <p>25, 27</p> <p>2</p> <p>16, 18, 20, 24, 26</p>

# BULLS



**NDED General Lee 019T**  
Lot 1



**MYTTY In Focus**  
Sire of Lots 2 & 20

**1**

Edwards Limousin Cattle

## NDED General Lee 019T

Black Polled Purebred Bull • 11/08/07 • NDED 019 T  
NPM-1901606

LVLS Secret Weapon 4408K  
AUTO Dollar General 122R  
AUTO Kyria 232K  
CHAZ First Choice 6004F  
DEDO High Hopes 012H  
DVFC Dream Fantasy 902E

CED EPD: 2  
BW/EPD: 75/ 1.9  
AWW/EPD: 765/ 54  
AYW/EPD: / 95  
Milk EPD: 26  
CEM EPD: 2  
S EPD: 0.1  
DOC EPD: 18  
STAY EPD:

Here is a double black and homozygous polled bull out of the great AUTO Dollar General 122R and our best donor DEDO High Hopes 012H. He is a very thick and smooth made bull. He was reserve grand champion bull at the 2009 Dixie National Show in Jackson, MS.

**2**

Light Farms

## Owen 173S

Black Polled Lim-Flex Bull • 1/30/08 • SKLS 157 U  
LFM-1896785

S A F Focus of E R  
MYTTY In Focus  
MYTTY Countess 906  
EXLR New Generation 071M  
Logan's 1201R  
LHRX 366J

CED EPD: 11  
BW/EPD: 78/-1.4  
AWW/EPD: / 51  
AYW/EPD: /101  
Milk EPD: 29  
CEM EPD: 3  
S EPD:  
DOC EPD: 21  
STAY EPD:

Double Black. Double Polled.



**AUTO Dollar General 122R**  
Sire of Lot 1

# PLANNED MATING



**DHVO Deuce**  
Sire of Lot 3 Planned Mating

Williams Limousin Farm

**3**

## PLANNED MATING

Selling a pregnant recipient cow with planned mating due date of Dec. 2, 2009.

### DHVO Deuce 132R

**Black Purebred Bull • 3/13/05 • DHVO 132 R**  
NPM-1797878

Black Diamond  
GPFF Blaque Rulon  
Quail Run Ramona BP  
Black Cat Dhan 152G  
Amy Jo Dhan 20L  
GPFF Amber Jo

CED EPD: 7  
BW/EPD: 88/ 2.1  
AWW/EPD: 712/ 69  
AYW/EPD: 1231/112  
Milk EPD: 24  
CEM EPD: -1  
S EPD: 1.5  
DOC EPD: 20  
STAY EPD:

DHVO Deuce 132R was the 2007 and 2008 National Grand Champion bull. He will provide fresh embryo/planned mating form at sale or will mail in.

### Miss Gateway 1123J

**Black Lim-Flex Cow • 11/22/99 • CCJE 1123 J**  
LFF-1618479

Cole First Down 46D  
Logan's Dual Run  
LKCC Smith Cattle 418A  
D H D Traveler 6807  
GAR 6807 Traveler 902  
GAR Bando 78

CED EPD: 10  
BW/EPD: 88/ 0.0  
AWW/EPD: 712/ 33  
AYW/EPD: 1231/ 77  
Milk EPD: 26  
CEM EPD: 3  
S EPD: 0.4  
DOC EPD: 15  
STAY EPD:



**Miss Gateway 1123J**  
Dam of Lot 3 Planned Mating

# FEMALES



**BBPB Baxter Black 547S**  
Sire of Lots 5A & 13,  
Service Sire for Lots 13 & 14

**4**

## MINC Millie 254M

Polled Purebred Cow • 6/30/02 • MINC 254 M  
NPF-1684802

Wulfs Endeavor 9053E  
SFKL Stargate 0102K  
SFKL Polled Spark  
Colorado 150  
WOFA Miss Luv 513A  
TEXS Star Luverly

Minchew Farms

CED EPD: 7  
BW/EPD: 70/ 3.1  
AWW/EPD: 754/ 49  
AYW/EPD: 896/ 83  
Milk EPD: 24  
CEM EPD: 5  
S EPD: 0.0  
DOC EPD:  
STAY EPD:

Sired by homozygous polled Stargate, top selling bull in Shadwell Farms last bull sale. WOFA Miss Luv is a daughter of TEXS Star Luverly, a flushmate to TEXS Ranger Primo and out of a Punch cow. Stargate goes back to Quarterback and Wulfs Endeavor. PE'd 12/13/08-3/31/09 to JCL Black Lodestar 87S, black homozygous son of JCL Lodestar 27L (NPM-1848980) and a Dakota daughter.

**4A**

MINC Barney 254U, a black polled bull calf born 10/01/08, is sired by DVFC Handyman out of Wulf's Handyman.

CED	B	W	Y	M	CEM	S	DOC	STAY
6	73 / 2.8	/ 44	/ 77	24	4	-0.1		

**5**

## JCL Miss Dakota 372N

Black Polled Purebred Cow • 3/02/03 • JCLC 372 N  
NPF-1752176

EXLR Dakota 353G  
AUTO Black Dakota 130J  
DFLC Jet Set BPC 34Y  
Poll Bronco 343B  
Kusel 292E  
Kusel 303C

Edwards Limousin Cattle

CED EPD: 5  
BW/EPD: 81/ 2.0  
AWW/EPD: 519/ 33  
AYW/EPD: 864/ 59  
Milk EPD: 19  
CEM EPD: 5  
S EPD: 0.2  
DOC EPD:  
STAY EPD:

JCLC 372N is out of AUTO Black Dakota, who has had many great offspring in the breed. She is a very stout, easy keeping female. She has done us a great job.

**5A**

Black polled bull calf, born 1/11/09. Sired by BBPB Baxter Black 547S.

CED	B	W	Y	M	CEM	S	DOC	STAY

**6**

## MINC Peaches 0277P

Polled Purebred Cow • 1/19/04 • MINC 0277 P  
NPF-1754538

Wulfs Endeavor 9053E  
SFKL Stargate 0102K  
SFKL Polled Spark  
DBRO Jackel 481H  
MINC Keepsake 235K  
TLFC Poll Blk Gabby

Minchew Farms

CED EPD: 9  
BW/EPD: 73/ 1.9  
AWW/EPD: / 35  
AYW/EPD: / 66  
Milk EPD: 22  
CEM EPD: 6  
S EPD: 0.0  
DOC EPD:  
STAY EPD:

Double Polled. Peaches goes back to some of the great cattle of the breed - Quarterback, Lindy's Scarlet, TEX Star Gypsy, and Rambler. PE'd 12/13/08-4/1/09 to JCL Black Lodestar 87S (NPM 1848980), a homozygous polled son of JCL Lodestar 27L out of a Dakota daughter.

**6A**

MINC Rough Rider 0277U, a black polled bull calf born 10/25/08, is sired by DVFC Handyman, son of Wulf's Handyman.

CED	B	W	Y	M	CEM	S	DOC	STAY
8	70 / 2.1	/ 37	/ 69	23	4	-0.1		



# FEMALES



**WALF Princess 406P**  
Lot 7

**7**

**White Acres Limousin**  
**WALF Princess 406P**  
Black Polled Purebred Cow • 2/25/04 • **WALF 406 P**  
NPF-1769576

EXLR Polled Benchmark709G  
EXLR Limited Edition 765J  
Wulfs Glenda 7021G  
DVFC Arrowhead 1004J  
WALF Marge 204M  
HB Miss Brenda 1Y

CED EPD: 14  
BW/EPD: 71/-0.3  
AWW/EPD: 507/ 27  
AYW/EPD: 813/ 52  
Milk EPD: 29  
CEM EPD: 7  
S EPD: 0.0  
DOC EPD: 22  
STAY EPD: 15

Homozygous Black. Double Polled. This young cow comes straight from the heart of our herd. Her pedigree is stacked deep with low birth weight, high maternal genetics; and she puts it all together in a beautiful package.

**7A**

WALF Warrior 903W, born 1/9/09, is a LVLS Duramax-sired, homozygous black, homozygous polled bull calf. He is a stout herd sire in the making.

CED	B	W	Y	M	CEM	S	DOC	STAY
6	86 / 3.1	/ 44	/ 84	27	6	0.7	24	



**LVLS Duramax 2408M**  
Sire of Lots 7A & 32



**JKEA Nice and Easy 402P**  
Lot 8

**8**

**Oleo Ranch**  
**JKEA Nice and Easy 409P**  
Black Polled Purebred Cow • 3/12/04 • **JKEA 402 P**  
NPF-1770146

EXLR Dakota 353G  
AUTO Black Dakota 129J  
DFLC Jet Set BPC 34Y  
Wulf's Polled Progress  
WOFA Miss Nola 703D  
SCF Something Nice 245Y

CED EPD: 7  
BW/EPD: 74/ 1.8  
AWW/EPD: 559/ 43  
AYW/EPD: / 82  
Milk EPD: 25  
CEM EPD: 5  
S EPD: 0.2  
DOC EPD: 13  
STAY EPD:

Black. Double Polled. If you're looking for a female with lineage, look no further. She's loaded from top to bottom going back to the great PURE Hermine 226J.

**8A**

JKEA Just to Easy 830U is a double black and double polled Lim-Flex heifer calf, born 11/6/08. This young calf could be a super star. This one has been a favorite at Oleo Ranch since day one. If you want to drag a nice one in the show ring and have a cool mama cow at the end, this "Just Right" heifer is "Just to Easy."

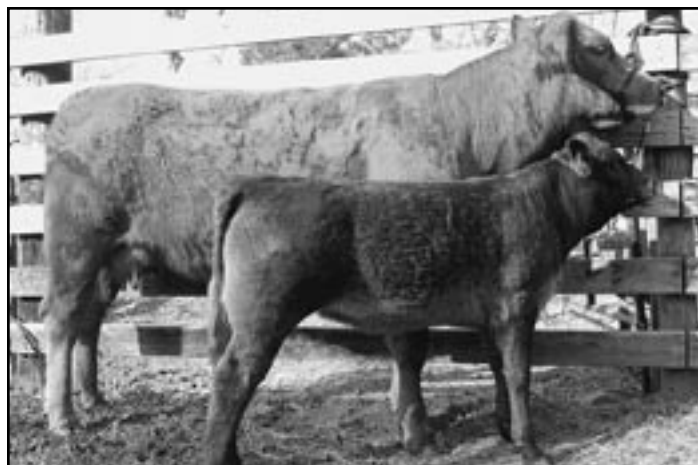
CED	B	W	Y	M	CEM	S	DOC	STAY
6	86 / 3.1	/ 44	/ 84	27	6	0.7	24	



# FEMALES



**JCL Lodestar 27L**  
Sire of Lot 9



**WALF Renee 508R and WALF Unity 808U**  
Lot 10 & 10A

**9**

## Big D 322R

Black Polled Purebred Cow • 2/23/05 • **BIGD 322 R**  
NPF-1793243

Edwards Limousin Cattle

Hunts Hi-Liter 245G  
JCL Lodestar 27L  
Logan's Cheerleader 280G  
Anders Jag  
BIGD 273M  
Big D 212K

CED EPD: 10  
BW/EPD: 71/ 2.4  
AWW/EPD: / 53  
AYW/EPD: /100  
Milk EPD: 16  
CEM EPD: 8  
S EPD: 0.4  
DOC EPD: 14  
STAY EPD:

Homozygous Black. Double Polled. Here is a JCL Lodestar cow, who is very stout, nice footed, and tremendous udder.

**9A**

Black, polled heifer calf born 1/25/09. Sired by CRSL 5064.

CED	B	W	Y	M	CEM	S	DOC	STAY

**10**

## WALF Renee 508R

Polled Purebred Cow • 9/21/05 • **WALF 508 R**  
NPF-1811960

White Acres Limousin

Wulf's Count Down 9251C  
EXLR Dakota 353G  
Cane Ridge Daphne 011D  
Wulfs Guardian 5074G  
WALF Jessica 918J  
DBRO Fine Tuned 151F

CED EPD: 1  
BW/EPD: 81/ 3.7  
AWW/EPD: 511/ 44  
AYW/EPD: 864/ 83  
Milk EPD: 22  
CEM EPD: 2  
S EPD: 0.5  
DOC EPD: 20  
STAY EPD: 20

Double Polled. AI'd 1/8/09 to Wulfs Shop Talk 2332S (NPM-1838716). This young daughter of "Dakota" is one that is extremely hard to part with. She is bred about as good as we know how. Out of a "Wulfs Guardian" x "Wulfs Dawson" cow that goes back to the famous donor OTSS Lindy's Scarlet. She has done a great job with her first two calves including the show prospect calf at side and her calf by the up and coming "Shop Talk" should be a knock out.

**10A**

WALF Unity 808U, born 10/22/08, is a black, double polled heifer calf sired by WALF Nemo 315N.

CED	B	W	Y	M	CEM	S	DOC	STAY
4	75 / 2.8	/ 40	/ 81	22	4	0.5	27	



**EXLR Starr 7129P**  
Lot 11

**11**

## EXLR Starr 7129P

Black Polled Purebred Cow • 3/23/04 • **EXLR 7129 P**  
NPF-1759802

CED EPD: 4  
BW/EPD: 75/ 2.9  
AWW/EPD: / 43  
AYW/EPD: / 77  
Milk EPD: 26  
CEM EPD: -2  
S EPD: 0.2  
DOC EPD: 23  
STAY EPD: 20

COLE First Down 46D  
RADS Black Prodigy  
RADS Poll Black Powder 1  
Wulfs Dawson 4421D  
EXLR Starr 614K  
MINE Pld Black Starr 312E

Haltered. Homozygous Black. Double Polled. AI'd to Excellante, safe in calf.

# FEMALES



**Wulf's Splendid 6359S**  
Lot 12



**BTAP DVFC Moneyline 404AP**  
Sire of Lots 14 & 21

**12**

## Wulf's Splendid 6359S

**Black Polled Purebred Cow • 5/3/06 • FI 6359 S**  
NPF-1838638

GPFF Blaque Rulon  
Carrousels Pure Power  
TUBB First Class 666F  
Wulf's Guardian 5074G  
Wulf's Lighthouse 1089L  
Precious

Oak Knoll Farm

CED EPD: 7  
BW/EPD: 89/ 1.3  
AWW/EPD: 645/ 46  
AYW/EPD: / 84  
Milk EPD: 21  
CEM EPD: 3  
S EPD: 0.3  
DOC EPD: 13  
STAY EPD:

Haltered. Homozygous Black. Double Polled. AI'd to Wulf's Ransom, safe in calf.

**13**

## DPBN Lucy 266T

**Black Polled Purebred Cow • 3/18/07 • DPBN 266 T**  
NPF-1871358

GPFF Blaque Rulon  
LESF Asphalt 9N  
GPFF Extra Sweet Elite  
EXLR Latigo 029M  
OKF New Design 266N  
Wulf's Karlie 0053K

Edwards Limousin Cattle

CED EPD: 3  
BW/EPD: 72/ 2.6  
AWW/EPD: / 34  
AYW/EPD: / 70  
Milk EPD: 18  
CEM EPD: -3  
S EPD: 0.4  
DOC EPD: 12  
STAY EPD:

This is a black and double polled heifer out of the great Asphalt. She is bred to BBPB Baxter Black. PE'd 12/19/08-3/31/09.

**14**

## DPBN Rebecca 100T

**Black Polled Purebred Cow • 4/15/07 • DPBN 100 T**  
NPF-1871343

GPFF Blaque Rulon  
BTAP DVFC Moneyline 404AP  
FWLY Hidden Rumors  
DVFC Arrowhead 1004J  
DVFC Reba 100M  
EXLR Rebeca 609H

Edwards Limousin Cattle

CED EPD: 6  
BW/EPD: 75/ 1.3  
AWW/EPD: / 41  
AYW/EPD: / 77  
Milk EPD: 18  
CEM EPD: 4  
S EPD: 0.4  
DOC EPD:  
STAY EPD:

This is a double black, double polled bred heifer out of BTAP DVFC Moneyline. She is off of our top donor DVFC Reba, who has done us an outstanding job. This heifer is very stylish. She has been PE'd 12/19/08-3/31/09 to BBPB Baxter Black.



# FEMALES



**Carrousel Pure Power**  
Sire of Lots 12 & 16



**SRC Miss Olympus 65T**  
Lot 15

**15**

S & R Cattle Farms

**SRC Miss Olympus 65T**

Black Polled Lim-Flex Cow • 8/13/07 • SRC 65 T  
LFF-1920071

Harvest Olympus  
SAYF Special Olympus 8P  
DEDO Flossie 287F  
BOYD New Day 8005  
Turnpike Empress 3106  
Graham N Empress 43

CED EPD: / 2.3  
BW/EPD: / 41  
AWW/EPD: / 73  
Milk EPD: 22  
CEM EPD:  
S EPD:  
DOC EPD:  
STAY EPD:

AI'd to JCL Lodestar. Heifer is from good sound mother who has shown to be an easy keeper and good milker.

**16**

Light Farms

**WNVU 749T**

Black Polled Purebred Cow • 11/2/07 • WNVU 749 T  
NPF-1900480

GPFF Blaque Rulon  
Carrousel Pure Power  
Tubb First Class 666F  
GPFF Blaque Rulon  
Win Vue Blaq Ruby Rose  
Win Vue Ramblin Ruby 04K

CED EPD: 3  
BW/EPD: / 3.3  
AWW/EPD: / 54  
AYW/EPD: / 94  
Milk EPD: 14  
CEM EPD: 1  
S EPD: 0.9  
DOC EPD: 9  
STAY EPD:

Double Black. Double Polled.

**17**

Oleo Ranch

**JKEA Over Easy 713T**

Black Polled Lim-Flex Cow • 11/2/07 • JKEA 713 T  
LFF-1922912

D H D Traveler 6807  
O C C Anchor 771A  
O C C Juanada 709V  
AUTO Black Dakota 129J  
JKEA Nice and Easy 402P  
WOFA Miss Nola 703D

CED EPD: 8  
BW/EPD: 74/ 0.4  
AWW/EPD: 584/ 37  
AYW/EPD: / 75  
Milk EPD: 21  
CEM EPD: 3  
S EPD: 0.1  
DOC EPD: 9  
STAY EPD:

Double Black. Double Polled. This moderate framed, nice made Lim-Flex heifer should be a maternal dream. Her sire is known for making easy doing, nice uddered, superb females. A full brother to 713T was a highly competitive show steer in Florida last year for the Holton family.

**18**

S & R Cattle Farms

**SRC Miss Olympus 15T**

Black Polled Lim-Flex Cow • 11/3/07 • SRC 15 T  
LFF-1912467

Harvest Olympus  
SAYF Special Olympus 8P  
DEDO Flossie 287F  
S A F Fame  
Masterfare Miss Paul 1089  
Masterfare Miss Paul 8095

CED EPD:  
BW/EPD: / 2.2  
AWW/EPD: / 48  
AYW/EPD: / 83  
Milk EPD: 25  
CEM EPD:  
S EPD:  
DOC EPD:  
STAY EPD:

AI'd to Saye Hunt 18P on 12/20/08, this heifer is from a good sound mother who has shown to be an easy keeper and good milker.

# FEMALES



**OKF Tonya 307T**  
Lot 19



**EXLR Excellante 251L**  
Sire of Lots 19 & 23, Service Sire for Lot 11

**19**

## OKF Tonya 307T

Black Polled Purebred Cow • 10/3/07 • DDNC 307 T  
NPF-1899977

Oak Knoll Farm

EXLR Polled Resolve 175G  
EXLR Excellante 251L  
EXLR 199H  
RADS Black Prodigy  
EXLR Starr 7129P  
EXLR Starr 614K

CED EPD: 6  
BW/EPD: 76/ 2.1  
AWW/EPD: / 44  
AYW/EPD: / 74  
Milk EPD: 32  
CEM EPD: -3  
S EPD: 0.8  
DOC EPD: 26  
STAY EPD:

Haltered. Homozygous Black. Double Polled (test pending, high probability). Exceptional disposition, quality genetics. Open for breeding.

**20**

## LIHT Sibil 8U

Black Polled Purebred Cow • 2/10/08 • LIHT 8 U  
Reg. Applied For

Light Farms

S A F Focus of E R  
MYTTY In Focus  
MYTTY Countess 906

BOHI 6128 S

CED EPD:  
BW/EPD: 62/  
AWW/EPD: 545/  
AYW/EPD: 824/  
Milk EPD:  
CEM EPD:  
S EPD:  
DOC EPD:  
STAY EPD:

**21**

## DPBN Kit 144U

Polled Purebred Cow • 2/20/08 • DPBN 144 U  
NPF-1911535

Edwards Limousin Cattle

GPFF Blaque Rulon  
BTAP DVFC Moneyline 404AP  
FWLY Hidden Rumors  
SLVL Black Oxen 190D  
DVFC Moving On 144N  
SLVL Vintage Cookie 142D

CED EPD: 6  
BW/EPD: 75/ 2.2  
AWW/EPD: / 47  
AYW/EPD: / 83  
Milk EPD: 19  
CEM EPD: 3  
S EPD: 0.3  
DOC EPD:  
STAY EPD:

Here is a double polled red heifer who has top line genetics and show appeal. She would be a fine junior heifer prospect for show.

**22**

## LHCV Mindy 20U

Black Polled Purebred Cow • 2/26/08 • LHCV 20 U  
NPF-1918268

Howard Limousin Farm

Hunts Hi-Liter 245G  
JCL Lodestar 27L  
Logan's Cheerleader 280G  
Wulfs Rambler 8400X  
LHCV Poll Star  
LHCV 32E Poll Irish

CED EPD: 14  
BW/EPD: 72/ 0.7  
AWW/EPD: / 46  
AYW/EPD: / 95  
Milk EPD: 20  
CEM EPD: 11  
S EPD: 0.3  
DOC EPD: 17  
STAY EPD:

Black. Double Polled. A very good daughter out of "JCL Lodestar." She has a very stylish look, great bloodline and very gentle as well. A female that's easy to look at and should add to any program.

# FEMALES



**JCL Lodestar 27L**  
Sire of Lots 22, 25, & 27

**23**

## LHCV Angel 21U

Black Polled Purebred Cow • 2/28/08 • LHCV 21 U  
NPF-1918269

EXLR Polled Resolve 175G  
EXLR Excellante 251L  
EXLR 199H  
COLE First Down 46D  
Mayer's First Marisa  
FTL Marisa 33F

Howard Limousin Farm

CED EPD: 6  
BW/EPD: 74/ 2.0  
AWW/EPD: / 46  
AYW/EPD: / 80  
Milk EPD: 30  
CEM EPD: 1  
S EPD: 1.1  
DOC EPD: 22  
STAY EPD:

Homozygous Black. Homozygous Polled. This female comes from the heart of our program. She is a top "Excellante" daughter and out of a tremendous "Cole First Down" daughter with brood cow potential. Here's a quality replacement heifer for your herd and a genetic package worth looking into.

**24**

## WLF Morning Glory 188U

Black Polled Purebred Cow • 4/3/08 • WLFN 188 U  
NPF-1898554

JCL Lodestar 27L  
JCL Lodestar 52R  
LKCC Smith Cattle 452B  
EXLR Dakota 353G  
OKF Mandy 257M  
OKF Karla 222K

Light Farms

CED EPD: 7  
BW/EPD: / 1.6  
AWW/EPD: / 41  
AYW/EPD: / 82  
Milk EPD: 22  
CEM EPD: 4  
S EPD: 0.5  
DOC EPD:  
STAY EPD:

Double Black. Double Polled.

**25**

## DVFC Darcey

4/7/08 • DVFC 416 U

Hunts Hi-Liter 245G  
JCL Lodestar 27L  
Logan's Cheerleader 280G  
Cane Ridge Daphne 011D  
DVFC Daphne 1103P

Deer Valley Farms

CED EPD:  
BW/EPD: /  
AWW/EPD: /  
AYW/EPD: /  
Milk EPD:  
CEM EPD:  
S EPD:  
DOC EPD:  
STAY EPD:

**26**

## LIHT Carmen 9U

Black Polled Purebred Cow • 4/8/08 • LIHT 9U  
Reg. Applied For

JCL Lodestar 27L  
JCL Lodestar 52R  
LKCC Smith Cattle 452B  
KPSP 12 R

Light Farms

CED EPD:  
BW/EPD: 64/  
AWW/EPD: 580/  
AYW/EPD: /  
Milk EPD:  
CEM EPD:  
S EPD:  
DOC EPD:  
STAY EPD:

# FEMALES



**JCL Mayberry 62S**  
Dam of Lot 28



**TDOG Show-Out 812U**  
Lot 30

**27**

## DVFC Reeling Em In 433U

Black Polled Purebred Cow • 4/9/08 • DVFC 433 U  
NPF-1924491

Hunts Hi-Liter 245G  
JCL Lodestar 27L  
Logan's Cheerleader 280G  
EXLR Dakota 353G  
DVFC Easy Fishin 930L  
DBRO Gone Fishing 415G

Deer Valley Farms

CED EPD: 10  
BW/EPD: / 1.9  
AWW/EPD: / 53  
AYW/EPD: /102  
Milk EPD: 21  
CEM EPD: 8  
S EPD: 0.7  
DOC EPD: 18  
STAY EPD:

**28**

## WLF Strawberry Lemonade

Black Polled Purebred Cow • 6/12/08 • WLFN 191 U  
NPF-1903263

JCL Lodestar 27L  
DVFC Double ChocolateChip  
DVFC ChocolateChip Cookie  
Carrousel Pure Power  
JCL Mayberry 62S  
JCL Mayberry

Williams Limousin Farm

CED EPD: 7  
BW/EPD: 78/ 2.2  
AWW/EPD: / 51  
AYW/EPD: / 95  
Milk EPD: 15  
CEM EPD: 5  
S EPD: 0.6  
DOC EPD:  
STAY EPD:

This is a classy heifer that combines two outstanding pedigrees. "Strawberry" is deep bodied, moderate framed, and deep ribbed. This June-born show prospect looks to be a great female, both in the show ring and the pasture. Birth weight: 78 lbs.

**29**

## PAFA Miss Bobbi 810U

Black Polled 75% Cow • 9/1/08 • PAFA 810 U  
NXF-1924848

GPFF Blaque Rulon  
Bob The Builder  
RSKY Miss Bob  
DBRO 115H  
PAFA Meagan 100L  
Black PowerPoll 54x

Pleasant Acres Limousin

CED EPD: 5  
BW/EPD: 79/ 1.6  
AWW/EPD: / 33  
AYW/EPD: / 68  
Milk EPD: 22  
CEM EPD: 0.5  
S EPD: 0.3  
DOC EPD:  
STAY EPD:

Double Polled. Double Black. This is one of the first Bob The Builder calves to sale in this part of the country. We all know that the % heifers have been hard to beat in the showing. Meagan was Adam's very first show heifer. Erin's Limousin of Trenton, FL purchased a Ali/Meagan daughter in the '08 Expo that became a successful junior heifer. This female is halter broke and ready to go. GCCPA eligible.

**30**

## TDOG Show-Out 812U

Black Polled Purebred Cow • 9/4/08 • TDOG 812U  
NPF-1924849

GPFF Blaque Rulon  
KRVN Pacesetter  
CHR Koko  
ELMW Fearured Choice 141F  
PERF BP Miss Choice 318N  
PERF Miss Red Topsy 906J

Pleasant Acres Limousin

CED EPD: 3  
BW/EPD: 80/ 1.8  
AWW/EPD: / 46  
AYW/EPD: / 80  
Milk EPD: 21  
CEM EPD: -0.1  
S EPD: 0.5  
DOC EPD: 13  
STAY EPD: 7.5

Double Polled. Double Black. TDOG Show-Out is a half sister to Tylers '08 Georgia State Show Champion Heifer. The Pacesetter semen is still not on the open market. His calves have tore up the Texas show circuit. PERF Miss Choice was also a former show heifer for Tyler. Her granddam was the great SCF Yellow Ribbon cow. Proven showing genetics here! This calf is GCCPA eligible. Halter broke.

# FEMALES



**WALF Upbeat 802U**  
Lot 32



**WALF Uptown 810U**  
Lot 33

**31**

## Big D 407U

**Black Polled 50% Cow • 9/12/08 • BIGD 407 U**  
NXF-1917059

AUTO Black Dakota 129J  
AUTO Silverado 100N  
STBR B-P's Rangerette

Foundation Cow

Big D Limousin

CED EPD: /  
BW/EPD: 66/  
AWW/EPD: /  
AYW/EPD: /  
Milk EPD: /  
CEM EPD: /  
S EPD: /  
DOC EPD: /  
STAY EPD: /

Don't miss this exciting show heifer prospect. 407U is sired by AUTO Silverado 100N and out of a great Maine-Anjou x Angus cow that goes back to the legendary Maine sire Cunia. This heifer is very deep bodied, extremely easy going, and loaded with eye appeal. GCCPA eligible.

**32**

## WALF Upbeat 802U

**Black Polled Purebred Cow • 9/26/08 • WALF 802 U**  
NPF-1922850

LVLS Doubledown 3615K  
LVLS Duramax 2408M  
LVLS Ms Stabilizer 2408E  
Thawks Black Frontier  
WALF Harmony 08H  
MACF Ms Payday 69F

CED EPD: 4  
BW/EPD: 80/ 3.7  
AWW/EPD: / 48  
AYW/EPD: / 88  
Milk EPD: 25  
CEM EPD: 5  
S EPD: 0.6  
DOC EPD: 13  
STAY EPD: /

White Acres Limousin

Double Black. Homozygous Polled. This super stout female is linebred for performance and maternal ability. This is a heifer that can show competitively and go on and out produce herself in the pasture. Her dam has been one of the most influential cows in our herd with several daughters doing a great job in production for us.

**33**

## WALF Uptown 810U

**Black Polled Purebred Cow • 11/1/08 • WALF 810 U**  
NPF-1922853

COLE First Down 46D  
WALF Nemo 315N  
LMAS Shurooq 9215J  
COLE First Down 46D  
BLFS Haylee  
Bauchman Punch JABJ 18S

CED EPD: 7  
BW/EPD: 78/ 2.2  
AWW/EPD: / 40  
AYW/EPD: / 80  
Milk EPD: 24  
CEM EPD: 7  
S EPD: 0.5  
DOC EPD: 19  
STAY EPD: /

Double Black. Homozygous Polled. "Uptown" is just about as deep bodied as you can make a show heifer prospect. Plenty of power and style combined in this November prospect. She is linebred to the immortal "First Down." Her EPD's are perfectly balanced and above average in virtually every category.



---

---

# PROSPECT STEER

---

---

**34**

## **PAFA Festus 811U**

**Black Polled Steer • 9/2/08 • PAFA 811 U**

**Pleasant Acres Limousin**

Sire: Cowans Ali (Purebred Maine)

Dam: Limousin (Blk Innovator)

CED EPD: /  
BW/EPD: /  
AWW/EPD: /  
AYW/EPD: /  
Milk EPD:  
CEM EPD:  
S EPD:  
DOC EPD:  
STAY EPD:

This percentage Limi Steer is sired by very popular Ali. His semen is now very limited and much in demand. Ali sired the Champion Steer at the '08 Georgia Limousin Field Day, exhibited by our daughter Sydney. Festus puts is together nicely in a real moderate package. This should make a good calf for a first year showman. GCCPA elibible.



**PAFA Festus 811U**

Lot 34

## TERMS, CONDITIONS, & GENERAL SALE INFORMATION

**TERMS:** Terms of the sale are cash unless prior credit arrangements are established between buyer and seller. Settlements are to be made with the clerk immediately after the conclusion of the auction. Parties unknown to the sale management desiring to settle by personal check, should bring a letter of identification from their banker.

**IDENTIFICATION:** Each animal sold will have a readable tattoo corresponding to its registration certificate. It is the responsibility of the seller to check all tattoos for accuracy and legibility prior to the sale. It is equally the responsibility of the buyer to recheck all tattoos for accuracy and legibility immediately after taking possession of the animal and to report any and all discrepancies to the seller.

**BIDDING & DISPUTES:** Each animal will be sold to the highest bidder. The auctioneer in charge will settle any dispute as to bids, and his decision will be final. The auctioneer shall have the right to refuse bids from anyone who has a previous record of default in payment.

**PURCHASER'S RISK:** Each animal becomes the property of the purchaser when sold and will be maintained at the purchaser's risk.

**INSURANCE:** Mortality insurance is available. Buyers wishing to insure their purchases may do so by contacting Cannon Marketing Company, Inc.

**HEALTH:** All animals are eligible for interstate shipment, except as otherwise announced. Interstate health certificates will be available for each animal over six (6) months of age. Each animal requiring Brucellosis (Bangs) and Tuberculosis (TB) tests in accordance with federal regulations will have been tested within 30 days of the sale date.

It is the responsibility of the buyer to know the health restrictions of his/her state and to be aware of the possibility of any subsequent testing of any animals purchased through this sale as required by law.

### BREEDING GUARANTEE:

1. All animals are guaranteed to be breeders with the exception of: a) calves under twelve months of age; b) in the event of any injury or disease that occurs to the animal after sale; c) gross negligence or willful misconduct on the part of the purchaser; d) females used in embryo transplant.
2. Bulls are guaranteed to be breeders at the time of sale, or at 16 months of age if they are younger than 16 months at time of sale. Any bull which either settles cows by natural service and/or passes a fertility test is considered to be fertile. Any guarantee with respect to the ability to freeze semen shall be a separate agreement between buyer and seller.
3. Females sold as safe in calf have been examined by a competent veterinarian or other reproductive technician and are so guaranteed to be with calf.
4. Any guarantee with respect to embryo transplant production shall be a separate agreement between buyer and seller. This guarantee is a contract between the buyer and the seller. All other parties are acting as agents or representatives only. Any legal action that may in extreme cases have to be taken must be between the buyer and seller and will in no way involve Georgia Limousin Association or Carroll T. Cannon, Auctioneer.

### OPTION & PRIVILEGE OF RETURN OR ADJUSTMENT:

1. All claims for adjustments or refunds must be made in writing to the seller either within six months of the date of the sale or no later than six months after the animal reaches 18 months of age, whichever occurs last.
2. In the event that an animal is claimed to be a non-breeder that animal must be returned to the farm of the seller in good condition and must have met

the health requirements of the original seller's state. The seller shall be entitled to six months trial following the return of the animal in which to prove that the animal is a breeder. If, at the end of six months, the seller has been unable to prove the animal as a breeder the seller shall at the option of the buyer, replace the animal with another of equal value or refund the total purchase price. The return of the purchase price shall in all cases be deemed as full settlement.

Any expense incurred in transporting the animal that is claimed to be a non-breeder shall be the responsibility of the purchaser except that the seller shall be responsible for transportation costs in the excess of the distance between the purchaser's farm and the location of the sale. If the seller proves the animal to be a breeder, it shall be the obligation of the purchaser to take delivery of the animal and pay all expenses incurred for transportation.

3. It is the obligation of the buyer and seller to negotiate any settlements on cattle that have not been properly represented at a sale. The selling of an animal constitutes a contract between buyer and seller and it is not the responsibility or the right of the North American Limousin Foundation or of the sale management firm to settle disagreements between buyers and sellers of cattle that have not been properly represented.

The return of an animal at the expense of the purchaser with a refund of the purchase price made by the seller is in all cases considered to be a complete settlement. Other settlements which are negotiated between buyer and seller may be equitable to cover instances in which cattle are not as represented sale day, but that does not warrant complete return of the animal.

**BLOOD TYPING FOR PARENTAGE VERIFICATION:** All animals sold are guaranteed to be offspring of their recorded parents.

**ANNOUNCEMENTS:** Announcements made from the auction block on sale day shall take precedence over information printed in the catalog. It is therefore the buyer's responsibility to pay attention to any such announcements.

**MAIL BIDS:** Mailed or telephoned bids will be handled in a most confidential manner if you are unable to attend the sale personally. If you need assistance please contact:

Carroll T. Cannon, Auctioneer, P.O. Box 500, Ty Ty, GA 31795  
229/776-4383

Thad Coombs, Limousin World representative, 615/406-5766

**LIABILITY:** All persons attend the sale at their own risk, and the seller and the sale manager assume no liability, legal or otherwise, for any accidents occurring in, on, or about the premises. Cannon Marketing Company, Inc., is acting only as a medium between buyer and seller, and is not in any way responsible for any failure on the part of either party to live up to his obligations. The information contained in this catalog and any subsequent publications was provided to the sale management by the seller – therefore, the sale management assumes no responsibility or liability for the accuracy of information contained herein or for any representations or warranties of the seller, whether written or oral, express or implied. Neither does Carroll T. Cannon, Auctioneer, or Georgia Limousin Association assume any financial obligations to collect or enforce collection of any monies between parties. Any legal action, that may in exceptional cases be taken, must be between buyer and seller. The buyer must look to the seller for fulfillment of all guarantees and representations made hereunder.

## GLOSSARY OF THE SALE

**OPEN** – This is a virgin heifer that has never been exposed to any bull by any means or in the case of a cow, she has not been exposed to a bull by any means since the birth of her last calf.

**BRED** – Female has been served by a bull or artificially inseminated to a bull but does not mean this female is safe in calf to that service.

**PASTURE EXPOSED OR PASTURE BRED (PE'd)** – Female has been running in the pasture with the bull and has been exposed to the bull for a period of time as stated but does not necessarily mean that this female is safe in calf.

**SAFE IN CALF** – Female has been palpated and diagnosed pregnant at the date of examination by a licensed veterinarian.

**FERTILITY TESTED** – Bull's semen has been tested by a licensed veterinarian or a recognized A.I. breeding center and he is considered a satisfactory breeder.

**BREEDER** – The owner or lessee of the dam at the time the dam was served to produce the calf.

**OWNER** – The individual, partnership, or corporation in whose name an animal is registered.

**HORNED** – Those animals with hard bony projections from their head. May be surgically removed or dehorned.

**POLLED** – Those animals that are genetically hornless.

**SCURRED** – Those genetically hornless animals (polled) that have a small loosely attached horn-like projection.

**PUREBRED (PB)** – Those upgraded purebred bulls that are 94% or greater and those females that are 87% or greater Limousin blood.

**FULLBLOOD** – Those purebreds that are 100% or of Full French ancestry.

**EXPECTED PROGENY DIFFERENCE (EPD)** – The expected difference in performance of an individual's progeny when compared to the average progeny performance of other individuals evaluated in the breed.

**OFFICIAL CALFHOOD VACCINATE (OCV)** – A female that has been vaccinated for Brucellosis in accordance with applicable federal regulations.