

TWO GREAT SALES...

HEART OF
MISSOURI



The Cattle Drive

Endorsed by the
FULBLOOD LIMOUSIN ALLIANCE

ONE GREAT EVENT!

Sunday
October 18, 2009 1:00 pm

Laclede County Fairgrounds, Lebanon, Missouri

HEART OF MISSOURI



**Sunday
October 18, 2009 1:00 pm**
Laclede County Fairgrounds, Lebanon, Missouri

The **Cattle Drive**
Endorsed by the
FULBLOOD ALLIANCE

Sale Day Phone
817-821-6263

Sale Location

Take #129 Lebanon exit. Go west on Jefferson (Hwy 64) 0.6 miles to Elm Street. Turn right (east) 0.4 miles to Laclede County Fairgrounds.



Announcements

Announcements at the sale by the owners, auctioneers, or sale manager will take precedence over statement in the sale catalog.

Trucking

Reliable truckers will be available or contacted to assist in making arrangements for shipping.

EPD's

Please note the EPD's may change from the time the catalog is printed until the registration papers are transferred.

Terms & Conditions

Cattle sell under standard sale terms and conditions of the North American Limousin Foundation.

Auctioneer

C.K. "Sonny" Booth,
918-542-1587 • Cell, 918-520-0938

Accommodations

Sand Spring Resort - 1-800-543-3474
Bennert Spring, MO • 417-532-5857
Super 8 Motel
Lebanon, MO • 417-588-2574

Sale Management

**KK SEEDSTOCK CONSULTANTS
SPECIALIZED SALES**
2300 Monument Ave., Richmond, VA 23220
Keith Kissee • Cell: 817-821-6263
Ph: 804-353-2220 • Fax: 804-353-2221
email: kksseedstock@comcast.net

Sale Consultant

Grassroots Consulting - Mark Smith
2511 NW 99th Pl. Ankeny, IA 50021
Phone/Fax: 515/965-1458
Cell: 515/299-5227

HEART OF MISSOURI



Saturday, October 17, 2009

12:00 pm - Sale cattle are available for viewing

3:00 pm - C.O.D.Y Bull & Heifer show

6:00 pm - C.O.D.Y Awards and Chili Dinner

Sunday, October 18, 2009

12:00 Noon - Complementary Lunch

1:00 p.m. Sale Begins

**Endorsed by the HEART OF MISSOURI
LIMOUSIN BREEDERS ASSOCIATION**

Lots 1 - 61

HEART OF MISSOURI LIMOUSIN ASSOCIATION

PRESIDENT Dave Vote

VICE PRESIDENT Rita Ash

SECRETARY/TREASURER D J Robertson

DIRECTORS

Sven Grimstead

Dean Pearson

Sandy Meyer

Jack Glendenning **EX OFFICIO**

CONSIGNORS

Berry Hill Farms
Dave Vote
18611 Durango Ln.
Phillipsburg, MO 65536
417-644-0711

Fisher's Limousin
Charles Fisher Jr.
982 Hutchins Ln.
Chipley, FL 32428
850-638-8873

Jireh Acres Limousin
Jerry & Shirley Carnes
16642 HWY FF
Dramond, MO 64840
417-358-5941

Ratliff 3R Bar Ranch
Paul Ratliff
Box 268
Washington, OK 73093
405-640-3674

Brent Boyce Farms
Brent Boyce
2106 S. Elm Rd.
Marshfield, MO 65706
417-830-2984

Glendenning J Bar J Limousin
Jack Glendenning
24300 McDonald Dr.
Lebanon, MO 65536
417-588-6121

Little Limousin
Rick & Susan Little
335 Hwy 87
Eldon, MO 65026
573-392-7665

Wies Limousin
Bob & Evonne Wies
Mike & Heather
Henderson, Mgrs.
103 Harris School Rd.
Wellsville, MO 63384
573-684-2773

Buck Ridge Farms
Mark Haden
5244 S. Farm Rd. 213
Rogersville, MO 65742
417-838-6109

Jones & Benson Limousin
Tye Jones & Dave Benson
18768 Jones Rd.
La Monte, MO 65337
660-460-5517

M & R Limousin
Mark Middleton
2413 Argo Rd.
Bourbon, MO 65441
573-732-4739

CND Limousin
Dean & Cindy Pearson
Rt.2 Box 2663
Birch Tree, MO 65438
573-292-3836

Gavin Jones
18768 Jones Rd.
La Monte, MO 65337
660-460-5517

Patriot Farms
HC 60 Box 153
Welty, OK 74833
918-623-1267



Lot 1

Lot 1

LIM-FLEX(75) • FEMALE • DOUBLE POLLED • RED

SCUN Tranished Angel 211T

BW: 80 • ADJ WW: 705

02/11/07 • SCUN 211T • LFF-1880264

CED	BW	WW	YW	MA	CEM	SC	DOC	ST	CW	RE	YG	MR	\$M
11	-0.3	45	86	18	3	0.4	8	N/A	24	0.39	0.12	0.08	45

GPFF BLAQUE RULON
KRVN NASKAR 013N
WLJU JU GAL 149J

BR MIDLAND
EXLR LUVLY 222R
EXLR LUVLY 084F

BLACK DIAMOND
QUAIL RUN RAMONA BP
COLE FIRST DOWN 46D
CHR GOSSIP GAL
TWIN VALLEY PRECISIONE161
BR ROYAL LASS 7036-19
WULFS DAWSON 4421D
AMBL LUVLY 340Y

Consigned by: Gavin Jones

Selling 5 #1 Embryos to the Bull of the Buyer's Choice

SCUN Tarnished Angel 211T was the top-selling female in the 2008 Great American Pie, when she was purchased by Gavin Jones. She has been a favorite on the show circuit and she has a fault-free pedigree that contains foundation Lim-Flex genetics. The angular and thickly-muscled female represents the most advanced genetic version of the EXLR Luvly 084F cow family.

EXLR 222R is one of the greatest of all Lim-Flex Females in the industry. The daughter of BR Midland and EXLR Luvly 084F has flawless phenotype and genotype, and the female produces perfection as evidence by her KRVN Naskar heifer. The superb female was one of the top-selling females through the National Sale in Denver, when she was purchased by Full Circle Limousin.

Lot 2

PUREBRED • BULL • DOUBLE POLLED • HOMO BLACK

HBRL Ultimate Dollar 811U

BW: 84 • ADJ WW: 694 • ADJ YW: 1127

03/31/08 • HBRL 811U • NPM-1909082

CED	BW	WW	YW	MA	CEM	SC	DOC	ST	CW	RE	YG	MR	\$M
3	3.0	58	104	27	3	0.7	9	N/A	43	0.56	0.01	0.12	52

IVLS SECRET WEAPON 4408K
AUTO DOLLAR GENERAL 122R
AUTO KYRIA 232K

TNUH BLUE PRINT 245H
MAGS RITA SKEETER
MAGS LADY DOCTOR

IVLS FARMER 4G
IVLS 408H
AUTO HACKETT 702H
WULFS HAPPINESS 8136H
WADDLES COBALD 310G
TNUH MISS C245
MAGS JUMANJI
AUTO CITY NIGHTS 214H

Consigned by: Buck Ridge Farms

HBRL Ultimate Dollar 811U is a herd sire deluxe from the Buck Ridge program. The homozygous black son of AUTO Dollar General 122R is one of the sire's best sons to sell to date. Absolutely trait-leading numbers coupled with his exceptional individual performance make this lot a great opportunity to own one of the great prospects to sell this year.

His dam, MAGS Rita Skeeter, is a milky daughter of TNUH Blue Print 245H. She is from the nationally recognized MAGS Lady Doctor.



Lot 2



Lot
3

Lot 3

LIM-FLEX(50) • BULL • HOMO POLLED • DOUBLE BLACK

WLR Usher 449U

04/20/08 • BJLR 449U • LFM-1926387

BW: 94 • ADJ WW: 792

CED	BW	WW	YW	MA	CEM	SC	DOC	ST	CW	RE	YG	MR	\$M
6	4.2	66	118	32	2	0.4	15	N/A	44	0.18	0.14	0.30	60

B/R NEW DESIGN 036
G A R PREDESTINED
G A R EXT 4206

AUTO BLACK DAKOTA 129J
MAGS NIGHT AMBUSH
MISS WULFETTE 6230F

V D A R NEW TREND 315
B/R BLACKCAP EMPRESS 76
N BAR EMULATION EXT
G A R 6807 TRAVELER 143Z
EXLR DAKOTA 353G
DFLC JET SET BPC 34Y
WULFS QUARTERBACK 4222B
MISS WOLFETTE 0278Y

Consigned by: Wies Limousin

WLR Usher is a high performing, strong numbered son of the popular performance Angus sire GAR Predestined and MAGS Night Ambush, the dam of WLR Direct Hit. Check out his EPD profile; WW, YW and \$MTI in the top 1%, CW in top 5% and MA and MARB in the top 10% of all Lim-Flex cattle. Combine that with outstanding conformation and a quiet disposition and you've got a great herd sire in the making.



Lot
4

Lot 4

PUREBRED • BULL • DOUBLE POLLED • DOUBLE BLACK

WLR Total Recall 405T

10/28/07 • BJLR 405T • NPM-1907375

BW: 82 • ADJ WW: 718

CED	BW	WW	YW	MA	CEM	SC	DOC	ST	CW	RE	YG	MR	\$M
5	4.0	40	75	14	1	0.1	7	N/A	12	0.54	-0.15	-0.10	40

ANDERS JAG
VORD MAGNUM 208M
VORD JASMINE

CANE RIDGE BLACK DRAK
LOGANS JAMIE 380J
RT BLACK AUTUMN

GREENWOODPOLLED455ROCKET
ANDERS GEMINI
WULFS QUARTERBACK 4222B
VORT DANDI 438D
WULFS DAWSON 4421D
WULF'S AUTUMN ANGEL 2505B
WULFS RAMBLER 8400X
NL MISS NIGHTRIDER 97R

Consigned by: Wies Limousin

Total Recall is a stout, heavy muscled. Stylish son of VORD Magnum and a natural calf from our donor Logan's Jamie 380J. Here's a different pedigree to add to your genetic base along with an excellent pedigree.

Lot 5

PUREBRED • BULL • DOUBLE POLLED • HOMO BLACK

CND Tommy

03/09/07 • CNDP 33T • NPM-1875502

BW: 89 • ADJ WW: 583 • ADJ YW: 1066

CED	BW	WW	YW	MA	CEM	SC	DOC	ST	CW	RE	YG	MR	\$M
6	2.6	41	75	22	1	0.3	3	N/A	N/A	N/A	N/A	N/A	N/A

RULER

GPFF BLAQUE RULON
DVFC HANDY LADY 342K
COSC HERITAGE 518H
CND LALANI
PERF 545T

BLACK DIAMOND
QUAIL RUN RAMONA BP
WULFS HANDYMAN 4253H
CANE LADY TEMPTRESS 343D
COLE FIRST DOWN 46D
COSC EXPRESSION 125F
BLR KAVALIER
WS ROUGE LA BOTE 91L

Consigned by: CND Limousin

CND Tommy is an 18+ month old son of Ruler, the good breeding bull sired GPFF Blaque Rulon. The CND breeding program is an excellent source of performance Limousin seed-stock. CND Tommy is indicative of the quality in the breeding herd. He has solidly and balanced numbers across the board.



HEART OF MISSOURI



Lot 6



RR Moonshine - Sire of Lot 6

Ref

BBPB Jaymin 538R is homozygous polled and an extraordinary foundation Lim-Flex female. She was shown with much success, and she has emerged as an ever stronger female from an expanding Lim-Flex program. She is fault-free in her genotype and phenotype and one that will surely reproduce her striking profile and replicate her genetic worth and superiority.



Lot 7

CBLR Miss Black 416M is one of the great ones to ever leave the Brent Boyce program. Her balanced EPDs and striking profile make her one of the top Lim-Flex females to sell in a while. CBLR Miss Black 416M is the dam of BBPB Kendra 555R, a daughter of RR Moonshine 2211. 555R, in turn, produced BBPB CFLX Turnpike 41T, a powerful bull for Council Family Limousin and Bent Boyce. He was the 2008 All American Futurity Reserve Division 1 Champion Lim-Flex Bull.

Lot 6

LIM-FLEX(50) • FEMALE • HOMO POLLED • DOUBLE BLACK

BBPB Jayman 538R

03/12/05 • BBPB 538R • LFF-1823407

BW: 71 • ADJ WW: 654

CED	BW	WW	YW	MA	CEM	SC	DOC	ST	CW	RE	YG	MR	\$M
5	0.4	43	84	26	3	N/A	N/A	N/A	15	-0.30	0.18	0.10	45

TC MOONSHINE 001
RR MOONSHINE 2211
EXAR DIXIE ERICA 0456
CHAZ FIRST CHOICE 6004F
CBLR JAYMIN 366J
CBLR MAGDALENA 251D
CONNEALY FOREFRONT
TC MOONSHINE 7002
D H D TRAVELER 6807
DIXIE ERICA OF R R 7530
COLE FIRST DOWN 46D
CHAZ MISS ROXANNE 92C
EPIC ACE
CEDAR HILL MAGGIE 0504T

Consigned by: Brent Boyce / Getz Cattle Co.

Open

LOT 6A - AGBB 92W • Polled, Red

Purebred Bull Calf by EF Smackdown 09/18/09.

EPD's: CED: 7, BW: -0.5, WW: 45, YW: 85, MA: 27, CEM: 4, SC: N/A

Lot 7

LIM-FLEX(50) • FEMALE • DOUBLE POLLED • DOUBLE BLACK

CBLR Miss Black 416M

04/10/02 • BBPB 416M • LFF-1705175

BW: 68

CED	BW	WW	YW	MA	CEM	SC	DOC	ST	CW	RE	YG	MR	\$M
5	2.8	45	83	19	1	0.2	13	13	32	-0.25	0.30	0.32	53

LEACHMAN PROMPTER
BEE BEE PROMPTER
BEE BEE BARBARA 96
HUNTS HI-LITER 245G
CBLR KENDRA 376K
SPITZ ANITA 906 X
BROST POWER DRIVE
LEACHMAN LASS 1004
S A F STETSON 5161
BEE BEE BARBARA 85
WADDLES COBALT 3106
TNUH MISS C245
EARTHQUAKE 93
SPITZ DANCERS LACE 518T

Consigned by: Brent Boyce

PE 12/12/08-1/24/09 to PBRS Saint Anthony 685S



Lot
9

Lot
8

LIM-FLEX(50) • FEMALE • SCURRED • BLACK

PRFR Ms Doll Star 101S

01/23/06 • PRFR 101S • LFF-1828310

BW: 61 • ADJ WW: 677

CED	BW	WW	YW	MA	CEM	SC	DOC	ST	CW	RE	YG	MR	\$M
5	0.9	50	91	20	1	0.1	1	N/A	25	0.07	0.17	0.36	57

TWIN VALLEY PRECISIONE161
BR MIDLAND
BR ROYAL LASS 7036-19

HARVEST OLYMPUS
KKCC DOLL MIRANDA 990N
KKCC DOLL DIANA II

GAR PRECISION 1680
WCC BLACKCAP C9
S A F NEUTRON
S A F ROYAL LASS 7036
WINTERSHALL JUPITER
LABORIEUSE
ORION
KKCC DOLL DIANA

Consigned by: Ratliff 3R Ranch

PE 11/30/08-2/10/09 CF Polled Prodigy 156T

PE 2/11/09-9/1/09 Second To None DHAN

Doll Star is a "true" Lim-Flex. An outstanding daughter of MYTTY In Focus and an extraordinary Harvest Olympus cow. She has excellent depth of rib, a balanced udder and a tremendous disposition. This powerful female is broody and very complete. She sells bred to a very impressive homozygous polled Fullblood son of Polled Harmonica. CF Proud Polled Prodigy, a true outcross and is due to calve in mid-November. The winning bidder on Doll Star will not only be the new owner of a great cow, they will also be given the choice of 5 straws of semen from either SVL Polled Profit, Second To None DHAN or OAKM Lord Krug 30L. The semen will be available at the sale.



BR Midland - Sire of Lot 8

Ref

Lot
9

PUREBRED • FEMALE • POLLED • HOMO BLACK

AUTO Rikkel 811R

03/07/05 • AUTO 811R • NPF-1791886

BW: 68 • ADJ WW: 779

CED	BW	WW	YW	MA	CEM	SC	DOC	ST	CW	RE	YG	MR	\$M
11	2.5	56	95	35	3	0.5	N/A	N/A	59	0.95	0.00	-0.07	44

AUTO BLACK DAKOTA 129J
AUTO SILVERADO 100N
STBR B-P'S RANGERETTE

AUTO OVER INVOICE 120K
AUTO MIKKEL 282M
EXLR LUVLY 087F

EXLR DAKOTA 353G
DFLC JET SET BPC 34Y
TEXS RANGER TED
POPPY
EXLR POLLED BENCHMARK709G
STBR WENDYLOU'S ABBY 205A
WULFS DAWSON 4421D
AMBL LUVLY 340Y

Consigned by: Brent Boyce

PE 12/12/08-1/24/09 to PBRS Saint Anthony 685S

AUTO Rikkel 811 R is a high performing female with breed pacing EPDs from start to finish. Furthermore, she scanned a 16.6 square inch REA and 4.26 IMF.

AUTO Rikkel is a breed leader both inside and out, and she will have a calf at side by sale day.

Lot
10

PUREBRED • FEMALE • POLLED • HOMO BLACK

J Bar J Timekeeper 713T

04/13/07 • GLDL 731T • NPF-1872033

BW: 82 • ADJ WW: 423

CED	BW	WW	YW	MA	CEM	SC	DOC	ST	CW	RE	YG	MR	\$M
7	2.0	32	72	20	4	0.1	22	N/A	-7	0.10	-0.03	-0.01	40

AUTO BLACK DAKOTA 129J
EF MAIN STAY 541M
EXLR 231J

MAGS JUMANJI
MAGS MAGINARY 222M
MAGS KAN YOU IMAGINE

EXLR DAKOTA 353G
DFLC JET SET BPC 34Y
WULFS GUARDIAN 5074G
EXLR LUVLY 081F
KRMC BLACK LEGACY 917B
MAGS BLACK & SATIN
DVFC COOKIE MONSTER 108H
MAGS GINNY LEE

Consigned by: Glendenning J Bar J

AI 11/30/08 to JCL Lodestar

PE 12/20/08-3/1/09 to BHDG SDGL Third Rock

J Bar J Timekeeper 731T is the homozygous (Fullblood) black female from several generations of the breed's best. Her dam of one of the real good numbers in Glendenning cow herd. Her nicely balanced numbers make her a breeding piece as a replacement female.



HEART OF MISSOURI



Lot 11

LIM-FLEX(50) • FEMALE • SCURRED • BLACK

Lot 11

Miss Mitty Guthrie 099U

04/05/08 • PRFR 099U • LFF-1913114

BW: 71 • ADJ WW: 757 • ADJ YW: 966

CED	BW	WW	YW	MA	CEM	SC	DOC	ST	CW	RE	YG	MR	\$M
12	-2.1	49	92	26	2	0.2	13	N/A	18	0.01	0.14	0.12	48

S A F FOCUS OF E R
MYTTY IN FOCUS
MYTTY COUNTESS 906

STZZ POLLED GUTHRIE 826H
MS IDOL WHISPER 111R
EDGE REJUVENESS 9N

S A F FAME
G D A R FOREVER LADY 246
SITZ ALLIANCE 6595
BALDRIDGE COUNTESS 357
STZZ POLLED YUKON 50E
THUNDERATION
EAFF REJUVENATOR 260J
EDGE SUSIE 341C

Consigned by: Ratliff 3R Ranch

Open

Mitty Guthrie is a Lim-Flex and a product of "true" hybrid vigor. Her sire is the great Angus bull Mytty In Focus and her dam is an excellent Polled Guthrie (Fullblood) daughter. This heifer is superb in her make-up, very soggy, stout and possesses exceptional EPDs, BW, YW & MA. A real "eye popper", she sells open and ready to breed to the bull of your choice. The winning bidder will be given their choice of 5 straws of semen from either SVL Polled Profit, Second To None DHAN or OAKM Lord Krug 30L (semen will be available at the sale).



Lot 12

LIM-FLEX(50) • FEMALE • POLLED • BLACK

Lot 12

Miss Mitty Krug 101U

06/11/08 • PRFR 101U • LFF-1913115

BW: 73 • ADJ WW: 596 • ADJ YW: 826

CED	BW	WW	YW	MA	CEM	SC	DOC	ST	CW	RE	YG	MR	\$M
8	0.0	47	89	28	-2	-0.1	19	N/A	10	-0.02	0.09	0.14	48

S A F FOCUS OF E R
MYTTY IN FOCUS
MYTTY COUNTESS 906

GOLDENVIEWKRUGERRAND 250K
MS NORDIC KRUG 154R
KKCC DOLL MOON MAJESTIC

S A F FAME
G D A R FOREVER LADY 246
SITZ ALLIANCE 6595
BALDRIDGE COUNTESS 357
K & D BEAU FRANCO KDS 3F
IGUANE
WRC PUNCH
TEXS STAR MOONGLOW

Consigned by: Ratliff 3R Ranch

Mitty Krug is another Lim-Flex and a "true" product of hybrid vigor. She is the daughter of the great Angus sire, Mytty In Focus and a great Goldenview Kruggerrand cow. This promising heifer has tremendous potential. She combines calving ease, performance and milking ability into a very nice package. The vet checked the bump on her neck and confirmed it was just gristle caused by her vaccinations. As with all of our other offerings in this year's Heart of Missouri sale, The winning bidder will be given their choice of 5 straws of semen from either SVL Polled Profit, Second To None DHAN or OAKM Lord Krug 30L (semen will be available at the sale).

Lot 13

PUREBRED • FEMALE • DOUBLE POLLED • DOUBLE BLACK

TYEJ Wanda 714W

04/15/09 • TYEJ 714W • NPF-1932378

BW: 70

CED	BW	WW	YW	MA	CEM	SC	DOC	ST	CW	RE	YG	MR	\$M
10	0.1	44	81	26	4	N/A	N/A	N/A	33	0.75	-0.11	-0.09	41

KRVN NASKAR 013N
KVLN TNT 7014T
ALCM MAYBE WILL CALL 160M

COLE WOLF HUNT
MAGS NOLA 128N
MAGS LOLA 876L

GPFF BLAQUE RULON
WL JU JU GAL 149J
MAGS KOTTONWOOD CANYON
ALCM KALL LATER
COLE FIRST DOWN 46D
COLE CATALINA 3309C
DVFC 388G
ROYAL FAWN

Consigned by: Jones and Benson Limousin

Open

The Jones and Benson breeding program has been built around some of the best Limousin genetics to create superior seedstock like the one offered as lot 13. The purebred heifer calf is a mid-April heifer with an excellent future in store. Her dam is a superior daughter of COLE Wulf Hunt that is making the mark in the Jones and Benson cow herd.

Lot 14

LIM-FLEX(50) • FEMALE • DOUBLE POLLED • DOUBLE BLACK

TYEJ Winna 717W

05/04/09 • TYEJ 717W • LFF-1932381

BW: 75

CED	BW	WW	YW	MA	CEM	SC	DOC	ST	CW	RE	YG	MR	\$M
8	-0.3	47	90	24	2	N/A	N/A	N/A	33	-0.11	0.29	0.21	49

KRVN NASKAR 013N
KVLN TNT 7014T
ALCM MAYBE WILL CALL 160M

S A NEUTRON 377
STEDEMS ROYAL LASS 303
SAF ROYAL LASS 0252

GPFF BLAQUE RULON
WL JU JU GAL 149J
MAGS KOTTONWOOD CANYON
ALCM KALL LATER
S A F NEUTRON
S A QUEEN SUSAN 102

Consigned by: Jones and Benson Limousin

Open

TYEJ Winna 717J is a flashy May-born heifer calf that is a perfect prospect for the Lim-Flex shows. She is from a great producing registered Angus cow and her sire is doing a great job in the Jones and Benson program.



Lot
15

PUREBRED • FEMALE • DOUBLE POLLED • HOMO BLACK

WLR Udele 433U

02/11/08 • BJLR 433U • NPF-1925203

BW: 83 • ADJ WW: 629

CED	BW	WW	YW	MA	CEM	SC	DOC	ST	CW	RE	YG	MR	SM
8	2.3	51	96	25	8	0.5	N/A	N/A	N/A	N/A	N/A	N/A	N/A

JCL LODESTAR 27L
MAGS SHYLLO
MAGS PHYLLO
IVLS FARMER 4G
VORT SARAH 610S
VORE GABBI

HUNTS HI-LITER 245G
LOGAN'S CHEERLEADER 280G
BR MIDLAND
MISS WULFETTE 6230F
COLE FIRST DOWN 46D
IVLS JENI 601V
LKCC TOMAHAWKS TOUCHDOWN
TUBB MISS POLLCAT 135A

Consigned by: Wies Limousin

AI 7/16/09 to DVFC Sitting Bull. (Safe)
This female is one more great example of the daughters MAGS Shyllo is producing. Her dam, VORT Sarah 610S is a full sister to VORE Lanni, one of the best ever produced by Vorthmann Limousin. The mating to Sitting Bull will produce a homozygous black calf.



Lot
15

Lot
16

PERCENTAGE(81) • FEMALE • DOUBLE POLLED • DOUBLE BLACK

WLR Ulka 461U

03/26/08 • BJLR 461U • NXF-1925218

BW: 60 • ADJ WW: 547

CED	BW	WW	YW	MA	CEM	SC	DOC	ST	CW	RE	YG	MR	SM
7	3.1	55	102	24	6	0.3	N/A	N/A	N/A	N/A	N/A	N/A	N/A

JCL LODESTAR 27L
MAGS SHYLLO
MAGS PHYLLO
SENNETT MAXIMIZER 364N
WLR REAL SWEET 096R
LNSR NORA

HUNTS HI-LITER 245G
LOGAN'S CHEERLEADER 280G
BR MIDLAND
MISS WULFETTE 6230F
AUTO BLACK DAKOTA 129J
EXLR DAKOTA BELLE 5108J
DJ GENTLEMAN IN BLACK
LNSR LEXUS

Consigned by: Weis Limousin

AI 7/16/09 to MAGS Twain (Safe)
WLR Ulka is a great combination of style and performance. High growth numbers and a strong pedigree add to her appeal.



Lot
16

Lot
17

PUREBRED • FEMALE • POLLED • DOUBLE BLACK

WLR Ume 464U

03/27/08 • BJLR 464U • NPF-1925612

BW: 62 • ADJ WW: 494

CED	BW	WW	YW	MA	CEM	SC	DOC	ST	CW	RE	YG	MR	SM
9	1.6	48	91	21	4	0.4	N/A	N/A	N/A	N/A	N/A	N/A	N/A

JCL LODESTAR 27L
MAGS SHYLLO
MAGS PHYLLO
LESF NAIROBI
WLR SHELBY 169S
CAVL NORA 314N

HUNTS HI-LITER 245G
LOGAN'S CHEERLEADER 280G
BR MIDLAND
MISS WULFETTE 6230F
GPFF BLAQUE RULON
GPF BLACK JACKETTE
TUBB LAW DOG 009L
CAVL LATTE' 110L

Consigned by: Weis Limousin

PE 7/18/09-8/25/09 to WLR Thrill Seeker
A MAGS Shyllo daughter with maternal appeal and that great cow look. She combines low birth and high growth in her EPD profile. She is bred to WLR Thrill Seeker, a full brother to WLR Direct Hit, guaranteeing the new owner a Black, polled calf. Ume combines two of the best pedigrees from our herd, Shyllo and LESF Nairobi.



Lot
17



HEART OF MISSOURI



Lot Ref

IVLS Weapon Hunt 8860S - Sire of Lots 18 - 22 & 23A

Lot 18

PUREBRED • FEMALE • DOUBLE POLLED • BLACK

M&R Iron Weapon 268U

04/22/08 • MIDL 268U • NPF-1902625

BW: 68 • ADJ WW: 639 • ADJ YW: 759

CED	BW	WW	YW	MA	CEM	SC	DOC	ST	CW	RE	YG	MR	\$M
6	2.0	55	89	31	3	0.3	9	N/A	30	0.63	-0.06	0.01	47

IVLS TOP CRITERIA 8862P
IVLS WEAPON HUNT 8860S
IVLS8860M

DVFC IRON CROSS 313L
M&R MISS IRONSIDES 183N
POLLED CAREN 34V

COLE WOLF HUNT
IVLS8862M
IVLS SECRET WEAPON 4408K
IVLS MS STABILIZER 2860F
KRMC OUTCROSS 192G
DVFC 201G
ADMM MR POLLED ENERGY
HARVS MS ENDORMI 94T

Consigned by: M&R Limousin

PE 4/1/09-8/1/09 to M&R Excellante 247T (Safe)
IVLS Weapon Hunt 8860S is the senior herd sire at M & R Limousin. Absolutely phenomenal EPDs accompany the pedigree of this female, and she traces to a hard-milking female rich in Ironsides 3P breeding.

Lot 19

PUREBRED • FEMALE • DOUBLE POLLED • BLACK

M&R Caren's Weapon 238U

03/21/08 • MIDL 238U • NPF-1902622

BW: 58 • ADJ WW: 583 • ADJ YW: 724

CED	BW	WW	YW	MA	CEM	SC	DOC	ST	CW	RE	YG	MR	\$M
10	-0.1	38	67	26	3	0.1	9	N/A	16	0.53	-0.14	-0.01	42

IVLS TOP CRITERIA 8862P
IVLS WEAPON HUNT 8860S
IVLS8860M

WAY-CO POLLED ALVIN 648A
MIDL MISS IMPRESSIVE
POLLED CAREN 34V

COLE WOLF HUNT
IVLS8862M
IVLS SECRET WEAPON 4408K
IVLS MS STABILIZER 2860F
WAY-CO POLLED TALLEY 511W
WAY-CO MISS JOAN 273T
ADMM MR POLLED ENERGY
HARVS MS ENDORMI 94T

Consigned by: M&R Limousin

PE 4/1/09-8/1/09 to M & R Excellante 247T (Safe)
M & R Caren's Weapon 238U is one of the high performing daughters of IVLS Weapon Hunt in the offering from M & R Limousin

Lot 20

PUREBRED • FEMALE • HORNED • BLACK

M&R Kaboom's Weapon 208U

03/15/08 • MIDL 208U • NPF-1902620

BW: 64 • ADJ WW: 538 • ADJ YW: 711

CED	BW	WW	YW	MA	CEM	SC	DOC	ST	CW	RE	YG	MR	\$M
9	-0.2	43	81	23	5	0.5	6	N/A	24	0.54	-0.11	-0.02	43

IVLS TOP CRITERIA 8862P
IVLS WEAPON HUNT 8860S
IVLS8860M

MAGS KABOOM
M&R MOLLY 194P
DVFC RED RAIN 119J

COLE WOLF HUNT
IVLS8862M
IVLS SECRET WEAPON 4408K
IVLS MS STABILIZER 2860F
EXLR DAKOTA 353G
MAGS GO IN STYLE
SIVL BLACK OXEN 190D
TRAK'S RAINBOW

Consigned by: M&R Limousin

PE 4/1/09-8/1/09 to M & R Excellante 247T (Safe)
This daughter of IVLS Weapon Hunt 8860S descends to the JCL Molly cow family. Her nicely balanced numbers make her a great replacement female.

Lot 21

PUREBRED • FEMALE • HORNED • BLACK

M&R Weapon Punch 108U

01/25/08 • MIDL 108U • NPF-1896715

BW: 72 • ADJ WW: 577 • ADJ YW: 741

CED	BW	WW	YW	MA	CEM	SC	DOC	ST	CW	RE	YG	MR	\$M
9	0.7	44	73	28	5	0.1	-5	N/A	18	0.50	-0.12	-0.01	44

IVLS TOP CRITERIA 8862P
IVLS WEAPON HUNT 8860S
IVLS8860M

WRC PUNCH
M&R CLASSIC PUNCH
POLLED DREAMER 35V

COLE WOLF HUNT
IVLS8862M
IVLS SECRET WEAPON 4408K
IVLS MS STABILIZER 2860F
MIMOSA
LEILA
ADMM MR POLLED ENERGY
LLR POLLED DREAM WJ514T

Consigned by: M&R Limousin

PE 4/1/09-8/1/09 to M & R Excellante 247T (Safe)
M & R Weapon Punch 108U is one of the quality females consigned from M & R Limousin. She carries the service of M & R Excellante 247T, the homozygous black son from a COLE Wolf Hunt-sired focus dam.



Lot
22

PUREBRED • FEMALE • DOUBLE POLLED • HOMO BLACK

RCC Katana

02/19/08 • JURA 1U • NPF-1906166

BW: 81

CED	BW	WW	YW	MA	CEM	SC	DOC	ST	CW	RE	YG	MR	\$M
9	2.1	45	83	22	3	N/A	N/A	N/A	14	0.40	-0.10	-0.10	41

AUTO BLACK DAKOTA 129J
CCJE HOTWIRE 102N
EXLR LUVLY 084F

EXLR POLLED BENCHMARK709G
KUSL KEY LIME 72K
KLRI 436F

EXLR DAKOTA 353G
DFLC JET SET BPC 34Y
WULFS DAWSON 4421D
AMBL LUVLY 340Y
WULFS DAWSON 4421D
PMD B ALLIANCE
TYRE DEAN 17B
MISS ECLAIR 4

Consigned by: M&R Limousin

PE 4/1/09-8/1/09 to M & R Excellante 247T (Safe)

RCC Katana is a homozygous black female sire by the full brother to the national champion, EXLR New Generation 071M. The high performing female is a good replacement heifer from the M & R Program.



PBRs Saint Anthony 685S - Sire of Lot 23A

Ref



Lot
24

Lot
23

PUREBRED • FEMALE • HOMO POLLED • BLACK

M&R Poll Black Jack 325R

12/04/05 • MIDL 325R • NPF-1823546

BW: 86 • ADJ WW: 591 • ADJ YW: 839

CED	BW	WW	YW	MA	CEM	SC	DOC	ST	CW	RE	YG	MR	\$M
3	2.6	32	61	15	1	0.3	26	16	1	0.18	0.00	-0.01	39

MAYS BLACK JET
IVLS POLLED BLACK JACK
IVLS REBECA

WAY-CO POLLED ALVIN 648A
MIDL MISS IMPRESSIVE
POLLED CAREN 34V

HVRM MOUNTAIN JET 372R
MAYS 9W
POLLED PACK LEADER 1182U
WZRK MISS VICTOR 707T
WAY-CO POLLED TALLEY 511W
WAY-CO MISS JOAN 273T
ADMM MR POLLED ENERGY
HARVS MS ENDORMI 94T

Consigned by: M&R Limousin

PE 4/16/09-8/15/09 to IVLS Weapon Hunt

LOT 23A - M&R WEAPONMAN 139W • Double Polled, Double Black

Purebred Bull Calf by IVLS Weapon Hunt 8860S. Born 02/27/09.

EPD's: CED: 9, BW: -0.5, WW: 41, YW: 74, MA: 23, CEM: 4, SC: 0.4

M & R Polled Black Jack 325R is homozygous polled and largely an outcross female. The high quality female has a late February herd sire prospect at side.

Lot
24

LIM-FLEX(50) • FEMALE • POLLED • BLACK

BBPB Jingle 596S

09/03/06 • BBPB 596S • LFF-1856907

BW: 63

CED	BW	WW	YW	MA	CEM	SC	DOC	ST	CW	RE	YG	MR	\$M
8	0.0	42	85	26	4	0.1	-3	N/A	12	-0.05	0.11	0.13	47

BON VIEW NEW DESIGN 1407
EXAR NEW LOOK 2971
N BAR PRIMROSE 2424

AUTO PLD FOUR-FIFTY-FOUR
CBLR JINGLE 351J
CBLR PUN ANN 221C

B/R NEW DESIGN 036
BON VIEW PRIDE 664
EMULATION 31
PRIMROSE N BAR 9962
MH VELOCITY
STBR B-P'S RANGERETTE
EPIC ACE
SPITZ PUN ANN 440S

Consigned by: Brent Boyce

PE 5/16/09-7/24/09 to PBRs Saint Anthony 685S

LOT 24A - BBPB JINGLE 73W • Double Polled, Double Black

Lim-Flex (75) Heifer Calf by PBRs Saint Anthony 685S. Born 04/16/09.

EPD's: CED: 8, BW: 0.8, WW: 41, YW: 80, MA: 19, CEM: 4, SC: N/A

BBPB Jingle 596S is a tremendous daughter of EXAR New Look 2971, one of the most popular Angus sires in North America. She is from an excellent polled fullblood female and the two individuals produced this perfectly conformed female. She has a fancy heifer calf at side by PBRs Saint Anthony 685S.



HEART MISSOURI



Lot 25

PUREBRED • FEMALE • HOMO POLLED • HOMO BLACK

Little's Susan Kay 98S

04/06/06 • RCLL 98S • NPF-1863641

BW: 72 • ADJ WW: 764 • ADJ YW: 964

CED	BW	WW	YW	MA	CEM	SC	DOC	ST	CW	RE	YG	MR	\$M
7	2.6	48	89	24	-1	0.5	24	16	11	0.24	-0.04	-0.08	42

WULFS GAGE 5158G
WULFS KEYSTONE 7522K
WULFS GIN GIN 7522G

RADS BLACK PRODIGY
BERRY HILLS BLACK PEARL
AUTO OUTSIDER 295F

WULFS ENDURANCE 3097E
WULFS EMBER 5158E
WULFS RAMBLER 8400X
WULF'S CONSCIOUS 3090C
COLE FIRST DOWN 46D
RADS POLL BLACK POWDER I
JCL BLACK OUT
MANITOBA XCEPTIONAL

Consigned by: Little Limousin

LOT 25A - LITTLE'S WHITNEY 87W • Homo Polled, Homo Black

Purebred Heifer Calf by Little's Shiloh 22S. Born 05/01/09.

EPD's: CED: 10, BW: 1.5, WW: 47, YW: 93, MA: 24, CEM: 5, SC: 0.7

This is a young homozygous black, homozygous polled cow going back to a great Outsider donor cow selling safe by ultrasound to our young sire trait leader son of Lodestar, Little's Shiloh and guaranteed to have a homo black, homo polled calf next spring. She sells with a homozygous black and homozygous polled heifer calf sired by Little's Shiloh. This is a top quality heifer with outstanding EPDs, pedigree, and style and homo both ways to boot! Will make a great show calf.



Ref

Lot 27

PUREBRED • FEMALE • DOUBLE POLLED • LACK

JY Truly

03/11/03 • DUNT 49E N • NPF-1734531

BW: 80 • ADJ WW: 486 • ADJ YW: 732

CED	BW	WW	YW	MA	CEM	SC	DOC	ST	CW	RE	YG	MR	\$M
8	3.1	27	51	12	3	0.2	19	N/A	N/A	N/A	N/A	N/A	N/A

COLE FIRST DOWN 46D
DUCES WILD
SHE'S NICE
POLLED FRONT RANGE 117Y
TRUE LOVE
MISS GENDARM

LKCC TOMAHAWKS TOUCHDOWN
2 155P
BLACK INNOVATOR
BETTY
HVRM MOUNTAIN JET 372R
MAYS 31W
INTERFERENCE
MISS GENDARME 80J AN

Consigned by: Little Limousin

LOT 27A - LITTLE'S WENDELL 149W • Double Polled, Double Black

Purebred Bull Calf by Little's Shiloh 22S. Born 09/02/09.

EPD's: CED: 11, BW: 1.8, WW: 37, YW: 74, MA: 18, CEM: 7, SC: 0.6

JY Truly is a double black double polled cow by a First Down son. A double black, double polled bull calf by our young sire trait leader son of Lodestar, Little's Shiloh is at side. Homo black test is pending.

Lot 26

PUREBRED • FEMALE • DOUBLE POLLED • DOUBLE BLACK

Arators Miss Jackie 956M

09/08/02 • TJSM 956M • NPF-1697032

BW: 79 • ADJ WW: 584 • ADJ YW: 802

CED	BW	WW	YW	MA	CEM	SC	DOC	ST	CW	RE	YG	MR	\$M
3	2.2	37	74	17	5	0.5	20	20	17	0.21	0.07	0.01	41

MAYS BLACK JET
IVLS POLLED BLACK JACK
IVLS REBECA

COLE FIRST DOWN 46D
COSC FIRST CHANCE 361G
MASH WAITRESS

HVRM MOUNTAIN JET 372R
MAYS 9W
POLLED PACK LEADER 1182U
WZRK MISS VICTOR 707T
LKCC TOMAHAWKS TOUCHDOWN
2 155P
SPITZ NAVAJO 607R
DEUX AMIS HONEY

Consigned by: Little Limousin

LOT 26A - LITTLE'S WAYLON 956W • Double Polled, Double Black

Purebred Bull Calf by Little's Shiloh 22S. Born 09/02/09.

EPD's: CED: 8, BW: 1.2, WW: 42, YW: 86, MA: 21, CEM: 8, SC: 0.7

This is a typical deep bodied double black double polled heavy milking daughter of Black Jack from a great First Down daughter. A thick, easy keeping cow that raises a top calf- just look at her udder. Her bull calf is a double black, double polled young trait leader son of Lodestar, Little's Shiloh. Homo black test is pending.

Lot 28

PUREBRED • FEMALE • DOUBLE POLLED • HOMO BLACK

Berry Hills Sarah

03/10/06 • BYHL 302S • NPF-1833559

BW: 72

CED	BW	WW	YW	MA	CEM	SC	DOC	ST	CW	RE	YG	MR	\$M
4	2.1	42	75	24	1	-0.2	27	20	10	0.28	-0.05	0.01	43

COLE FIRST DOWN 46D
RADS BLACK PRODIGY
RADS POLL BLACK POWDER I

CHAZ FIRST CHOICE 6004F
DVFC QUEEN IRONSIDE 302H
LOJW QUEEN IRONSIDE 611U

LKCC TOMAHAWKS TOUCHDOWN
2 155P
NMCC POLLED BLACK POWDER
PERF 670U
COLE FIRST DOWN 46D
CHAZ MISS ROXANNE 92C
LOJW IRONSIDES 3P
MS LOJW 906L

Consigned by: Berry Hill Farms

Open

LOT 28A - HEIFER CALF • Polled, Homo Black

Purebred Heifer Calf by JCL Lodestar. Born 09/04/09.

EPD's: CED: 10, BW: 0.9, WW: 42, YW: 97, MA: 22, CEM: 7, SC: 0.3

Berry Hills Sarah comes from our long time donor DVFC Queen Ironsides 312G Sarah is one of the deepest bodied thick made well uddered cows to ever come from the Berry Hills herd She is Homozygous Black and so is her outstanding 09-04-2009 heifer by JCL Lodestar.

Lot 29

PUREBRED • FEMALE • DOUBLE POLLED • DOUBLE BLACK

Berry Hills Mic-Mac

02/28/05 • BYHL 133R • NPF-1797816

BW: 84

CED	BW	WW	YW	MA	CEM	SC	DOC	ST	CW	RE	YG	MR	\$M
7	1.8	40	75	23	-6	0.5	11	16	11	0.40	-0.11	-0.06	41

WULFS GAGE 5158G
WULFS KEYSTONE 7522K
WULFS GIN GIN 7522G

HARVEST OLYMPUS
HL MISTY MOON
HC EXTRAORDINARY HCR 61X

WULFS ENDURANCE 3097E
WULFS EMBER 5158E
WULFS RAMBLER 8400X
WULF'S CONSCIOUS 3090C
WINTERSHALL JUPITER
LABORIEUSE
BVFL BLACK POLL POWER
HC GUSSET HCR 18G

Consigned by: Berry Hill Farms

LOT 29A - BULL CALF • Polled, Black

Purebred Bull Calf by T Bar J Ladies Man. Born 09/16/09.

EPD's: CED: 8, BW: 0.2, WW: 43, YW: 81, MA: 26, CEM: -1, SC: N/A

Berry Hills Mic-Mac is a known Daughter of Wulf's Keystone and the great HL Misty Moon (Harvest Olynmpus X Hc Extraordinary 61X) Mic Mac has a stout calf by T Bar J Ladys Man, our Homo-black Homo-polled JCL Lodestar son. This is a very nice Keystone daughter coming into her prime.



Lot
30

PUREBRED • FEMALE • DOUBLE POLLED • DOUBLE BLACK

JALH Ms Morgan 692

BW: 85 • ADJ WW: 590 • ADJ YW: 820

09/26/06 • JALH 692S • NPF-1871516

CED	BW	WW	YW	MA	CEM	SC	DOC	ST	CW	RE	YG	MR	\$M
3	3.1	42	83	16	1	0.2	28	N/A	N/A	N/A	N/A	N/A	N/A

HUNTS HI-LITER 245G
MEMO MORGAN 644M
MEMO JULIE 642J

CHAZ FIRST CHOICE 6004F
JALH CHAZ 438
JIREH'S LAPTOP 2

WADDLES COBAIT 3106
TNUH MISS C245
KRMC BLACK LEGACY 917B
MEMO ENDLESS LOVE 642E
COLE FIRST DOWN 46D
CHAZ MISS ROXANNE 92C
JCL BLACK OUT
JWWC BATSONS GIRL 2A

Consigned by: Jireh Acres Limousin

LOT 30A - JALH 873W • Polled, Black

Purebred Heifer Calf by KAJO Slam Dunk. Born 09/15/09.

EPD's: CED: 9, BW: 0.8, WW: 48, YW: 94, MA: 18, CEM: 5, SC: 0.5

This is a double polled, double black cow that carries the Hunts Hi-Liter and Chaz 1st choice bloodlines. She has a great disposition and both her and her calves have performed well for us. If you are looking for a predictable brood cow, consider Ms. Morgan.

Lot
31

PUREBRED • FEMALE • DOUBLE POLLED • HOMO BLACK

PDRN Annie

BW: 80 • ADJ WW: 524 • ADJ YW: 809

01/22/06 • PDRN 1S • NPF-1841719

CED	BW	WW	YW	MA	CEM	SC	DOC	ST	CW	RE	YG	MR	\$M
2	1.9	37	69	21	1	0.4	12	N/A	-8	0.19	-0.14	-0.11	38

AUTO TAYLOR MADE 755J
AUTO 714N
AUTO CAMILE 218G

CVR SIR CARMAC 467C
PERF MISS LIZ BP 011K
HERE ELIZABETH 460D

EXLR DAKOTA 353G
DFLC JET SET BPC 34Y
SIVL BLACK OXEN 190D
TEXS STAR 208Y
LKCC TOMAHAWKS TOUCHDOWN
CVR QUEEN HANSOM 404W
DBRO BOOMERANG 52B
PERF 909X

Consigned by: Jireh Acres Limousin

LOT 31A - HEIFER CALF • Homo Polled, Double Black

Purebred Heifer Calf by KAJO Slam Dunk. Born 09/15/09.

EPD's: CED: 9, BW: 0.2, WW: 45, YW: 87, MA: 21, CEM: 5, SC: 0.7

This black and homozygous polled cow is very docile and a joy to handle. She is an excellent breeder and will produce all polled calves. If you are looking for a gentle, homozygous polled cow, consider Ms. Annie.

Lot
32

PUREBRED • FEMALE • DOUBLE POLLED • DOUBLE BLACK

PDRN Estia

BW: 88 • ADJ WW: 537 • ADJ YW: 853

03/19/06 • PDRN 6S • NPF-1841722

CED	BW	WW	YW	MA	CEM	SC	DOC	ST	CW	RE	YG	MR	\$M
4	2.8	35	69	25	0	0.4	6	N/A	N/A	N/A	N/A	N/A	N/A

AUTO TAYLOR MADE 755J
AUTO 714N
AUTO CAMILE 218G

CC'S BLACK SMOKEY
CC'S SMOKEY'S ANGEL 022L
CC'S HORIZON LADY

EXLR DAKOTA 353G
DFLC JET SET BPC 34Y
SIVL BLACK OXEN 190D
TEXS STAR 208Y
NMCC POLLED BLACK POWDER
WAY-CO POLLED EXIE 690A
GSAC BLACK HORIZON 325
LJ MISS LOOK 5315E

Consigned by: Jireh Acres Limousin

Due to calve 9/25/09 to KAJO Slam Dunk

This double polled, double black cow is a proven breeder with years of service ahead of her. She is very gentle with excellent maternal traits. She is ultrasound due to calve 9/25/09 to our senior herd sire, KAJO Slam Dunk, who is in the top 10% of the breed in several EPD categories.

Lot
33

PUREBRED • FEMALE • DOUBLE POLLED • BLACK

COSC Powderroom 409P

BW: 74 • ADJ WW: 518 • ADJ YW: 739

03/12/04 • COSC 409P • NPF-1756675

CED	BW	WW	YW	MA	CEM	SC	DOC	ST	CW	RE	YG	MR	\$M
8	1.3	34	70	19	5	0.6	9	N/A	6	0.42	-0.21	-0.04	40

EXLR DAKOTA 353G
MAGS KABOOM
MAGS GO IN STYLE

COSC HOLLISTER 537H
COSC 052L
COSC GILDA 405G

WULF'S COUNT DOWN 9251C
CANE RIDGE DAPHNE 011D
COLE FIRST DOWN 46D
WULF'S MANDARIN 1121A
WULF'S QUARTERBACK 4222B
OAKM LADY MALIBU 956C
COLE FIRST DOWN 46D
G C MARSHA

Consigned by: Jireh Acres Limousin

Due to calve 9/20/09 to CALO Turn Two

This black, double polled cow is loaded with muscle and capacity. She has an excellent udder and teat size and has produced superior calves. This gentle 5 year old has worked for us and is ultrasound due to calve 9/20/09 to CALO Turn Two.

Lot
34

PUREBRED • FEMALE • DOUBLE POLLED • HOMO BLACK

PERF Miss BP Feature 363N

BW: 72

10/01/03 • PERF 363N • NPF-1741994

CED	BW	WW	YW	MA	CEM	SC	DOC	ST	CW	RE	YG	MR	\$M
6	2.0	39	71	19	-2	0.2	10	12	4	0.38	-0.16	-0.08	40

WADDLES CLEAR CHOICE 360
ELMW FEATURED CHOICE 141F
ELMW POLLED BLACK PUFF 5B

BLACK JOKER
JJSR BLACK BEAUTY
BLACK POLLED BERTHA

OTSS HARD CASH 0500Y
MISS WOLFETTE 9230X
NMCC POLLED BLACK POWDER
ELMW LUCKY LADY 21X
BLACK INNOVATOR
BLACK PAULINE 132N
WLCC BLACK POLLED SPIRIT
JJSR PUNCH MELISSA

Consigned by: Little Limousin

AI 12/3/08 to COLE First Down

PE 12/24/08-3/20/08 to Little's Shiloh

A homozygous black daughter of Featured Choice. She is moderate in size and consistently produces a great calf. Her last calf by Lodestar was homo both ways and sold as a top end herd sire. Should calve before the sale day and guaranteed to have a homozygous black calf.

Lot
35

PUREBRED • FEMALE • DOUBLE POLLED • BLACK

Little's Paige 79P

BW: 72 • ADJ WW: 578

09/01/04 • RCLL 79P • NPF-1804110

CED	BW	WW	YW	MA	CEM	SC	DOC	ST	CW	RE	YG	MR	\$M
8	1.0	35	68	24	3	0.3	8	13	N/A	N/A	N/A	N/A	N/A

BXDB AGGRESSOR 214B
LITTLE'S CENTURION
MISS BUSSINESS 307Y

MATL POLLED PERMEATOR
JLMH MISS PENNY
JLMH 47T

POLLED PACK LEADER 1182U
IRFS 103U
WULF'S BUSINESSMAN 714W
YKCC 747 MISS 061P
EARTHQUAKE 93
MISS FANFARON OF WAF 53
MOSBO PLATINUM L160P
SHDR 113 P

Consigned by: Little Limousin

AI 12/6/08 to KRVN Picante (Safe)

A stylish polled cow by Centurion that knows how to raise a good calf. This will definitely be a top pair.



HEART OF MISSOURI



Lot 36

PUREBRED • FEMALE • DOUBLE POLLED • HOMO BLACK

LA Fancy Rose 327

BW: 78 • ADJ WW: 598

04/03/03 • LLA 327N • NPF-1724993

CED	BW	WW	YW	MA	CEM	SC	DOC	ST	CW	RE	YG	MR	\$M
5	2.2	41	73	23	1	0.4	18	N/A	2	0.31	-0.09	-0.04	41

COYH BLACK DOCTOR 719G
PERF BLACK DOCTOR 948J
PERF MISS DIESEL 708G

COLE FIRST DOWN 46D
COYH MISS FABBY 273B
D&M DIESEL 199E
PERF MISS BP HITTER 488D
FSHK BLACK OILY 357
WLCC 07X
TEXS RANGER PRIMO
TINSLEY BLACK GIRL 075N

IBRR BLACK SHADOW
LA BLACK VELVET ROSE
DBRO PRIMROSE 075W

Consigned by: Little Limousin

AI 11/30/08 to KRVN Picante
PE 12/24/08-3/20/08 to Little's Shiloh

A homo black cow who is a daughter of the famous Velvet Rose cow, she is long bodied and smooth patterned. AI 11/30/08 to KRVN Picante. PE 12/24/08-3/20/09 to Little's Shiloh who is homo black and homo polled. Should calve before the sale and guaranteed to have a homo black calf.

Lot 37

PUREBRED • FEMALE • DOUBLE POLLED • BLACK

CND Skylark

BW: 80 • ADJ WW: 651 • ADJ YW: 956

04/26/06 • CNDP 7S • NPF-1840371

CED	BW	WW	YW	MA	CEM	SC	DOC	ST	CW	RE	YG	MR	\$M
7	3.1	49	94	21	3	0.1	21	20	N/A	N/A	N/A	N/A	N/A

WULFS RAMBLER 8400X
WULFS GUARDIAN 5074G
WULFS EXAMPLE 5074E

POLLED PACK LEADER 1182U
T TRI PURECHO 100K
WULF'S CHOPPER 1014C
MISS WOLFETTE 2151B
COLE FIRST DOWN 46D
COSC EXPRESSION 125F
WLCC POLLED MAJESTY 40A
CND CLASS ACT

COSC HERITAGE 518H
CND NORENE
CND MISS TOP DRAWER

Consigned by: CND Limousin

PE 1/2/09-4/4/09 to CND Terry

CND Skylark is sired by the well-proven Wulf's Guardian 5074G. The three year old female comes from the heart of the CND program and she has superior numbers for weaning and yearling weight EPDs. This is a good consignment from the CND program.

Lot 38

PUREBRED • FEMALE • DOUBLE POLLED • DOUBLE BLACK

AUTO Rainbow 296R

BW: 75 • ADJ WW: 536 • ADJ YW: 859

09/16/05 • AUTO 296R • NPF-1820086

CED	BW	WW	YW	MA	CEM	SC	DOC	ST	CW	RE	YG	MR	\$M
7	3.4	55	96	11	3	0.3	7	N/A	9	0.34	-0.08	-0.07	45

ANDERS JAG
COLE MAGNUM 15M
COLE 8117H

GREENWOODPOLLED455ROCKET
ANDERS GEMINI
COLE FIRST DOWN 46D
COLE 09E
JCL BLACK OUT
STBR DEMETRIA 669D
WULFS DAWSON 4421D
CANE RIDGE DESTINY 356D

AUTO ROUGH IDLE 141J
AUTO LANG 267L
CANE RIDGE DESTINY 9803J

Consigned by: M&R Limousin

PE 3/1/09-8/15/09 to LVLS Weapon Hunt (Safe)

Trait-leading performance is overwhelming evident in the EPDs of this COLE Magnum daughter.



EAFF Polled Platinum 515N - Sire of Lots 39& 40

Ref

Lot 39

PUREBRED • FEMALE • DOUBLE POLLED • RED

Platinums Lady 16U

BW: 56 • ADJ WW: 745

05/02/08 • FNGC 16U • NPF-1915161

CED	BW	WW	YW	MA	CEM	SC	DOC	ST	CW	RE	YG	MR	\$M
8	1.3	38	72	22	2	0.3	N/A	N/A	18	0.44	-0.12	-0.06	40

MINE GOLD MEDAL 436G
EAFF POLLED PLATINUM 515N
NP POLLED SMOKIN GAL

SOGF SPECIAL K 247B
MLC WRANGLER QUEEN 337C
GUNSMOKE
LAURA'S GUESS
RACHELS HAMLET
SOGF ORION SHOW 233B
EXLR 021J
LZYR ANNA 011H

EAFF HAMLETS SHOWOUT 472M
MISS HAMLET 438
LZYR 011L

Consigned by: Fishers Limousin

PE 5/30/09-9/28/09 to BEMS Yukon (3 months Safe)

This is a top purebred female with largely fullblood genetics in the pedigree. She is guaranteed to have a polled calf.

Lot 40

PUREBRED • FEMALE • POLLED • RED

Easy Lady 39U

BW: 59 • ADJ WW: 808

07/15/08 • FNGC 39U • NPF-1920390

CED	BW	WW	YW	MA	CEM	SC	DOC	ST	CW	RE	YG	MR	\$M
9	1.6	47	80	24	3	0.3	8	N/A	N/A	N/A	N/A	N/A	N/A

MINE GOLD MEDAL 436G
EAFF POLLED PLATINUM 515N
NP POLLED SMOKIN GAL

SOGF SPECIAL K 247B
MLC WRANGLER QUEEN 337C
GUNSMOKE
LAURA'S GUESS
OAKM OUR SECRET AGENT 37D
RSKY CAROLINE 119C
FNGC POLLED NORHTERN 141
MISS CRIMSON 561Y

EAFF CARLE 274K
MISS CARLE 527
MISS POLLED NORTHERN 141L

Consigned by: Fishers Limousin

PE 5/30/09-9/28/09 to BEMS Yukon (3 months Safe)

This good purebred heifer weaned at over 800 pounds. Exceptional performance fullblood seedstock is in the pedigree.



PATRIOT FARMS

Complete Dispersal

This represents the dispersal sale of the entire Patriot Farms program. Females were selected from some of the best breeders in the nation. The females that sell are a sound group of cows and most have calves at side.



COLE Wulf Hunt - Sire of Lot 41

Ref



EXLR Native 7133N - Sire of Lot 42

Ref

Lot 41

PUREBRED • FEMALE • DOUBLE POLLED • DOUBLE BLACK

PFLR Centerfold

04/01/07 • PFLR 107T • NPF-1881525

BW: 66

CED	BW	WW	YW	MA	CEM	SC	DOC	ST	CW	RE	YG	MR	\$M
12	0.4	44	81	23	3	0.3	23	N/A	18	0.74	-0.17	-0.02	44

COLE FIRST DOWN 46D	LKCC TOMAHAWKS TOUCHDOWN
COLE WULF HUNT	2 155P
COLE CATALINA 3309C	MAYS BLACK JET
	COLE 21 R
GPFF BLAQUE RULON	BLACK DIAMOND
KRVN RAMAH 198R	QUAIL RUN RAMONA BP
EXLR 756J	EXLR BURNING BLACK 305F
	EXLR 031G

Consigned by: Patriot Farms

PE 4/15/09-9/15/09 to PFLR Main Event

LOT 41A - PFLR 301W • Polled, Black

Purebred Bull Calf by PFLR Main Event. Born 03/20/09.

EPD's: CED: 10, BW: 1.2, WW: 42, YW: 83, MA: 24, CEM: 4, SC: 0.3

PFLR Centerfold was a great show heifer in the junior program in Oklahoma. She was shown 8 times with 7 grand championships and 1 reserve grand championship. She is doing a good job with her first calf.

Lot 42

PUREBRED • FEMALE • HOMO POLLED • BLACK

PBRs Sun Up 656S

09/03/06 • PBRs 656S • NPF-1854314

BW: 86 • ADJ WW: 598

CED	BW	WW	YW	MA	CEM	SC	DOC	ST	CW	RE	YG	MR	\$M
5	2.7	46	83	21	0	0.1	22	N/A	23	0.59	-0.05	-0.21	37

EXLR JUDO 459J	WULFS GUARDIAN 5074G
EXLR NATIVE 7133N	CM POLLED KATIE
TRAK EXLR ANNIE	JCL BLACK OUT
	YKCC NATALIE 223B
WULFS GUARDIAN 5074G	WULFS RAMBLER 8400X
PBRs PURE PRIDE 03102	WULFS EXAMPLE 5074E
PBRs EARTHQUAKE 0132	WULFS DAWSON 4421D
	EXLR 395B DISCOVERY 001E

Consigned by: Patriot Farms

PE 4/15/09-9/15/09 to PFLR Main Event

LOT 42A - PFLR 303W • Polled, Black

Purebred Heifer Calf by PFLR Main Event. Born 03/23/09.

EPD's: CED: 6, BW: 2.3, WW: 43, YW: 84, MA: 23, CEM: 3, SC: 0.4

This daughter of EXLR Native 7133N is doing a great job with her first calf. The homozygous polled female has a fancy heifer calf at side by PFLR Main Event



HEART MISSOURI

Lot
43

PUREBRED • FEMALE • DOUBLE POLLED • DOUBLE BLACK

RADS Sky Line

01/16/06 • JLKE 558S • NPF-1846766

BW: 78 • ADJ WW: 657

CED	BW	WW	YW	MA	CEM	SC	DOC	ST	CW	RE	YG	MR	\$M
4	2.5	29	64	18	0	0.6	4	N/A	-13	0.11	-0.06	-0.06	37

GPF BLAQUE RULON
LESF ASPHALT 9N
GPF EXTRA SWEET ELITE

BLACK DIAMOND
QUAIL RUN RAMONA BP
LKCC TOMAHAWKS TOUCHDOWN
HC EXTRAORDINARY HCR 61X
LLR POLLED PROMPTER WJ770
PJMC BLOSSUM 24T
LKCC TOMAHAWKS TOUCHDOWN
RADS INVEST A PROGRESS I

Consigned by: Patriot Farms

PE 4/15/09-9/15/09 to PFLR Main Event

LOT 43A - PFLR 302W • Polled, Black

Purebred Heifer Calf by PFLR Main Event. Born 03/23/09.

EPD's: CED: 6, BW: 2.2, WW: 35 YW: 74, MA: 21, CEM: 3, SC: 0.4

RADS Sky Line was a former show heifer, and the moderately framed daughter of LESF Asphalt 9N has got a good bull calf at side. This heavy milking female is just now in the prime of her life.



LESF Asphalt 9N - Sire of Lot 43

Ref

Lot
44

PUREBRED • FEMALE • DOUBLE POLLED • DOUBLE BLACK

PFLR First Dance 102T

04/05/07 • PFLR 102T • NPF-1881520

BW: 72

CED	BW	WW	YW	MA	CEM	SC	DOC	ST	CW	RE	YG	MR	\$M
6	1.2	44	83	21	1	0.7	17	N/A	15	0.57	-0.05	-0.11	40

BLACK DIAMOND
GPF BLAQUE RULON
QUAIL RUN RAMONA BP

CANE RIDGE BLACK DRAK
WULFS DIADEM 4260D
LKCC TOMAHAWKS TOUCHDOWN
AMBL FAVORITE GIRL 36W
LKCC TOMAHAWKS TOUCHDOWN
2 155P
LKCC TOMAHAWKS TOUCHDOWN
ACLL POLLED EBONY 6M

Consigned by: Patriot Farms

PE 7/15/09-9/15/09 to PFLR Main Event

LOT 44A - PFLR 305W • Polled, Black

Purebred Heifer Calf by PFLR Main Event. Born 06/31/09.

EPD's: CED: 7, BW: 1.3, WW: 42, YW: 84, MA: 22, CEM: 3, SC: 0.5

This homozygous black and homozygous polled daughter of GPF Blaque Rulon is one of the most attractive females in the offering from Patriot Farms. She has a real fancy calf at side by PFLR Main Event.



GPF Blaque Rulon - Sire of Lot 44

Ref

Lot
45

PUREBRED • FEMALE • POLLED • DOUBLE BLACK

PFLR Princess

05/12/07 • PFLR 109T • NPF-1881527

BW: 70

CED	BW	WW	YW	MA	CEM	SC	DOC	ST	CW	RE	YG	MR	\$M
9	1.2	41	81	19	4	0.9	N/A	N/A	10	0.22	0.02	-0.01	42

KRVN NASKAR 013N
PBRS NEXT GREAT 554R
MAGS NEXT DAY

GPF BLAQUE RULON
WLJUJU GAL 149J
AUTO BLACK DAKOTA 129J
AUTO NATASHA 273G
KRMC BLACK LEGACY 917B
MAGS BLACK & SATIN
PBRJ SECOND DOWN
CHR MS ATLANTIC 33Y

Consigned by: Patriot Farms

PE 7/15/09-9/15/09 to PFLR Main Event

LOT 45A - PFLR 306W • Polled, Black

Purebred Heifer Calf by PFLR Main Event. Born 07/01/09.

EPD's: CED: 8, BW: 1.6, WW: 41, YW: 83, MA: 22, CEM: 4, SC: 0.6

PFLR Princess is a young two year old female that is doing a great job with her July-born heifer calf.

Lot
46

PUREBRED • FEMALE • DOUBLE POLLED • DOUBLE BLACK

Koal Creek

05/04/00 • MAGS 913K • NPF-1587696

BW: 69 • ADJ WW: 615

CED	BW	WW	YW	MA	CEM	SC	DOC	ST	CW	RE	YG	MR	\$M
0	1.9	37	76	23	1	0.7	24	22	8	0.16	-0.05	-0.01	41

LKCC TOMAHAWKS TOUCHDOWN
JCL BLACK OUT
JCL MADELINE

COLE FIRST DOWN 46D
MAGS GO IN STYLE
WULF'S MANDARIN 1121A

LKCC BLACK NUGGET 906U
LKCC SMITH CATTLE 755S
TEXS RANGER PRIMO
MISS CHARU NORTHERN 852M
LKCC TOMAHAWKS TOUCHDOWN
2 155P
POLLED PACK LEADER 1182U
MISS WOLFETTE 3023R

Consigned by: Patriot Farms

PE 8/1/09-9/15/09 to PFLR Main Event

LOT 46A - PFLR 309W • Polled, Red

Purebred Heifer Calf by PFLR Main Event. Born 07/21/09.

EPD's: CED: 4, BW: 1.9, WW: 38, YW: 80, MA: 24, CEM: 3, SC: 0.5

MAGS Keal Creek is a maternal sister to MAGS Kaboom, both from MAGS Go In Style. She is a significant producer and she has a great July baby at side..



Lot
47

PUREBRED • FEMALE • POLLED • RED

BLVH Cherry 145R

12/24/05 • BLVH 145R • NPF-1830893

BW: 75

CED	BW	WW	YW	MA	CEM	SC	DOC	ST	CW	RE	YG	MR	\$M
1	4.6	42	78	19	3	0.3	-1	17	13	0.49	-0.16	-0.14	39

WULF'S COUNT DOWN 9251C
EXLR DAKOTA 353G
CANE RIDGE DAPHNE 011D

RFRR MASTER DESIGN
RAINY 228L
BZMN RED COW 02F

LKCC TOMAHAWKS TOUCHDOWN
MISS WOLFETTE 9051X
WULFS RAMBLER 8400X
YKCC MISS IRONSIDE 110NS
MH MASTER PLAN
PLCC DEBBIE 010U
TEXS RANGER PRIMO
OAKM LADY 306D

Consigned by: Patriot Farms

PE 8/1/09-9/15/09 to PFLR Main Event

LOT 47A - PFLR 307W • Polled, Black

Purebred Heifer Calf by PFLR Main Event. Born 07/18/09.

EPD's: CED: 4, BW: 3.3, WW: 41, YW: 81, MA: 22, CEM: 4, SC: 0.3

BLVH Cherry is a perfectly conformed daughter of EXLR Dakota 353G. The former show heifer has done a great job with her first two calves. Her first son is working in a top commercial herd in Oklahoma.



EXLR Dakota - Sire of Lot 47

Ref

Lot
48

PUREBRED • FEMALE • DOUBLE POLLED • DOUBLE BLACK

RADS Diamond Gal

09/01/06 • JORA 560S • NPF-1846768

BW: 80 • ADJ WW: 571

CED	BW	WW	YW	MA	CEM	SC	DOC	ST	CW	RE	YG	MR	\$M
3	3.6	46	81	22	-1	0.0	20	NA	13	0.36	-0.12	-0.01	44

CHAZ FIRST CHOICE 6004F
RADS BLOW IN SMOKE
AUTO POLLED PUFF 810E

COLE FIRST DOWN 46D
CHAZ MISS ROXANNE 92C
NMCC POLLED BLACK POWDER
BLACK POLLED ELEGANCE
COLE FIRST DOWN 46D
RADS POLL BLACK POWDER I
CHR HARVEST HAND
CHR SWEET TRADITION 117W

RADS BLACK PRODIGY
RADS SWEET & SNAZZY
CHR SWEET HEART 315D

Consigned by: Patriot Farms

PE 8/1/09-9/15/09 to PFLR Main Event

LOT 48A - PFLR 309W • Polled, Black

Purebred Heifer Calf by PFLR Main Event. Born 07/31/09.

EPD's: CED: 5, BW: 2.8, WW: 43, YW: 83, MA: 23, CEM: 2, SC: 0.2

RADS Diamond Gal is milking well and doing a good job with her July baby heifer calf.



MAGS Jumanji - Sire of Lot 50

Ref

Lot
49

PUREBRED • FEMALE • DOUBLE POLLED • DOUBLE BLACK

KRVN Ramah 198R

05/11/05 • KRVN 198R • NPF-1811859

BW: 86

CED	BW	WW	YW	MA	CEM	SC	DOC	ST	CW	RE	YG	MR	\$M
4	3.1	48	83	26	0	0.6	16	NA	19	0.70	-0.13	-0.08	42

BLACK DIAMOND
GPFF BLAQUE RULON
QUAIL RUN RAMONA BP

CANE RIDGE BLACK DRAK
WULFS DIADEM 4260D
LKCC TOMAHAWKS TOUCHDOWN
AMBL FAVORITE GIRL 36W
EXLR ROOKIE 217D
BURNING HEART 225W
CANE RIDGE POLLED WYATT
MCM BABY RUTH CMH 181A

EXLR BURNING BLACK 305F
EXLR 756J
EXLR 031G

Consigned by: Patriot Farms

PE 8/1/09-9/15/09 to PFLR Main Event

LOT 49A - PFLR 313W • Polled, Black

Purebred Bull Calf by PFLR Main Event. Born 07/31/09.

EPD's: CED: 5, BW: 2.5, WW: 44, YW: 84, MA: 25, CEM: 3, SC: 0.5

A former show heifer, KRVN Ramah 198R is making a great cow. Her daughter sells as lot 41. A tremendous mother/daughter consignment.

Lot
50

PUREBRED • FEMALE • HORNED • BLACK

MAGS Nobody's Fool

03/30/03 • MAGS4042N • NPF-1729846

BW: 78 • ADJ WW: 630 • ADJ YW: 916

CED	BW	WW	YW	MA	CEM	SC	DOC	ST	CW	RE	YG	MR	\$M
4	3.8	42	79	31	-1	0.4	6	18	8	0.08	-0.04	0.15	48

KRMC BLACK LEGACY 917B
MAGS JUMANJI
MAGS BLACK & SATIN

WULF'S POLLED PROGRESS
DJ ESSENCE
GOLDENVIEW THERESA GVC486

NICO POLLED LEGACY
HOLIJO 103
PLLP POLLED WEBSTER 30X
WLCC XPOSE 41X
WULFS BUSINESSMAN 714W
MISS WOLFETTE 9081X
HARVEST OLYMPUS
IGUANE

Consigned by: Patriot Farms

PE 8/15/09-10/15/09 to PFLR Main Event

LOT 50A - PFLR 312W • Polled, Red

Purebred Heifer Calf by PFLR Main Event. Born 08/01/09.

EPD's: CED: 5, BW: 2.9, WW: 41, YW: 82, MA: 28, CEM: 2, SC: 0.4

MAGS Nobody's Fool is a maternal sister to DJ Gentleman In Black. This is one of the best producers in the Patriot program. Her first bull calf by JCL Lodestar weaned at 796 pounds.



HEART MISSOURI



Lot 51

PUREBRED • FEMALE • DOUBLE POLLED • DOUBLE BLACK

PBRs Music 434P

04/10/04 • PBRs 434P • NPF-1778138

BW: 68 • ADJ WW: 627

CED	BW	WW	YW	MA	CEM	SC	DOC	ST	CW	RE	YG	MR	\$M
6	2.6	46	85	18	2	0.3	15	N/A	20	0.53	-0.12	-0.07	42

WULFS GUARDIAN 5074G
EXLR GAUCHO 362K
EXLR ALLIANCE 337G

MAGS JUMANJI
MAGS MUSIC ALLEY 127M
MAGS JAZZ ALLEY 796J

WULFS RAMBLER 8400X
WULFS EXAMPLE 5074E
WULF'S COUNT DOWN 9251C
PMDB ALLIANCE
KRCM BLACK LEGACY 917B
MAGS BLACK & SATIN
WULFS GUARDIAN 5074G
MAGS GOLDEN KEY

Consigned by: Patriot Farms

PE 8/15/09-10/15/09 to PFLR Main Event

LOT 51A - PFLR 310W • Polled, Black

Purebred Heifer Calf by PFLR Main Event. Born 07/31/09.

EPD's: CED: 7, BW: 2.3, WW: 43, YW: 85, MA: 20, CEM: 4, SC: 0.3

PBRs Music 434P has been a good producer in the Patriot program. She is doing a good job with her summer-born heifer calf.

Lot 52

PUREBRED • FEMALE • DOUBLE POLLED • BLACK

PFLR Heartbreaker

09/03/07 • PFLR 112T • NPF-1881530

BW: 61

CED	BW	WW	YW	MA	CEM	SC	DOC	ST	CW	RE	YG	MR	\$M
6	0.6	37	72	15	2	0.5	N/A	N/A	9	0.57	-0.20	-0.15	37

GPF BLAQUE RULON
RLAY RULER 13N
MISS NATRONA 10D

EXLR DAKOTA 353G
PBRs TRUE HEART 0311
MAGS FOLLOW YOUR HEART

BLACK DIAMOND
QUAIL RUN RAMONA BP
LKCC TOMAHAWKS TOUCHDOWN
HONY POLLED QUEEN 903X
WULF'S COUNT DOWN 9251C
CANE RIDGE DAPHNE 011D
ROKR DROVER
MAGS DANCING FOR MONEY

Consigned by: Patriot Farms

PE 9/15/09-10/15/09 to PFLR Main Event

LOT 52A - PFLR 313W • Polled, Black

Purebred Bull Calf by PFLR Main Event. Born 09/03/09.

EPD's: CED: 7, BW: 1.3, WW: 38, YW: 78, MA: 20, CEM: 4, SC: 0.4

PFLR Heartbreaker is a full sister to the 11,500 PBRs Seems To Me female purchased by Magness Land & Cattle Co. This is a great young pair.

Lot 53

PUREBRED • FEMALE • DOUBLE POLLED • RED

PBRs True Heart 0311

01/25/03 • PBRs 311N • NPF-1723774

BW: 78

CED	BW	WW	YW	MA	CEM	SC	DOC	ST	CW	RE	YG	MR	\$M
1	4.3	45	82	15	3	0.8	-2	17	11	0.55	-0.24	-0.07	43

WULF'S COUNT DOWN 9251C
EXLR DAKOTA 353G
CANE RIDGE DAPHNE 011D

ROKR DROVER
MAGS FOLLOW YOUR HEART
MAGS DANCING FOR MONEY

LKCC TOMAHAWKS TOUCHDOWN
MISS WOLFETTE 9051X
WULFS RAMBLER 8400X
YKCC MISS IRONSIDE 110NS
BLAZER SLBO 512B
MAGS ANNIE
WULF'S HOME RUN 9226AA
VRCC JOSIE 004U

Consigned by: Patriot Farms

PE 9/15/09-8/15/09 to PFLR Main Event

LOT 53A - PFLR 314W • Polled, Black

Purebred Bull Calf by PFLR Main Event. Born 09/16/09.

EPD's: CED: 4, BW: 3.1, WW: 43, YW: 83, MA: 20, CEM: 4, SC: 0.6

PBRs True Heart 0311 is a great producing daughter of EXLR Dakota 353G. Her daughter sells as lot 52 and she produced the 11,500 PBRs Seems To Me heifer calf purchased by Magness Land & Cattle Co.

Lot 54

PUREBRED • FEMALE • HORNED • RED

MAGS Klarissa

03/28/00 • MAGS 812K • NPF-1586135

BW: 85 • ADJ WW: 685

CED	BW	WW	YW	MA	CEM	SC	DOC	ST	CW	RE	YG	MR	\$M
1	5.1	48	85	17	3	0.8	-2	17	11	0.56	-0.21	-0.07	43

WULF'S COUNT DOWN 9251C
EXLR DAKOTA 353G
CANE RIDGE DAPHNE 011D

ROKR DROVER
MAGS FOLLOW YOUR HEART
MAGS DANCING FOR MONEY

LKCC TOMAHAWKS TOUCHDOWN
MISS WOLFETTE 9051X
WULFS RAMBLER 8400X
YKCC MISS IRONSIDE 110NS
BLAZER SLBO 512B
MAGS ANNIE
WULF'S HOME RUN 9226AA
VRCC JOSIE 004U

Consigned by: Patriot Farms

Will calve by sale day to PFLR Main Event full sister sells as lot 53.

Lot 55

PUREBRED • FEMALE • HORNED • BLACK

PBRs Spavinaw 407P

02/28/04 • PBRs 407P • NPF-1778129

BW: 68 • ADJ WW: 607

CED	BW	WW	YW	MA	CEM	SC	DOC	ST	CW	RE	YG	MR	\$M
9	1.4	32	69	19	2	0.8	N/A	18	N/A	N/A	N/A	N/A	N/A

KRCM BLACK LEGACY 917B
MAGS JUMANJI
MAGS BLACK & SATIN

PBRJ SECOND DOWN
PBRs SPAVINAW
CHR MS ATLANTIC 33Y

NICO POLLED LEGACY
HOLLJO 103
PLLP POLLED WEBSTER 30X
WLCC XPOSE 41X
COLE FIRST DOWN 46D
JCL MOLLY
YKCC ATLANTIC 397N
IO MS SPAVINAW 219T

Consigned by: Patriot Farms

Will calve by sale day to PFLR Main Event.

She is a high performing cow that produces high performing calves.

Lot 56

PUREBRED • FEMALE • DOUBLE POLLED • DOUBLE BLACK

PFLR Ruby

09/11/07 • PFLR 114T • NPF-1881532

BW: 79

CED	BW	WW	YW	MA	CEM	SC	DOC	ST	CW	RE	YG	MR	\$M
0	3.6	43	79	24	0	N/A	N/A	N/A	N/A	N/A	N/A	N/A	N/A

RADS SHOCKWAVE
RADS AFTERSHOCK BGEF
STUART TOUCHDOWN 4L

JCL BLACK OUT
MAGS KOAL CREEK
MAGS GO IN STYLE

RADS BLACK PRODIGY
RADS MIDNIGHT LASS
STUART TOUCHDOWN 22C
STUART HITCHING POST 1E
LKCC TOMAHAWKS TOUCHDOWN
JCL MADELINE
COLE FIRST DOWN 46D
WULF'S MANDARIN 1121A

Consigned by: Patriot Farms

Should calve by sale day to PFLR Main Event

PFLR Ruby will calve before sale day as a two year old.



Lot
57

PUREBRED • FEMALE • DOUBLE POLLED • BLACK

PFLR Honey

04/20/07 • PFLR 101T • NPF-1881519

BW: 89

CED	BW	WW	YW	MA	CEM	SC	DOC	ST	CW	RE	YG	MR	\$M
0	5.8	56	95	21	-1	0.8	5	N/A	17	0.52	-0.10	-0.09	44

GPFF BLAQUE RULON
DHVO ACE 128R
AMY JO DHAN 20L

EXLR DAKOTA 353G
PBRS DAPHNE 0304
TRAK GLORY

BLACK DIAMOND
QUAIL RUN RAMONA BP
BLACK CAT DHAN 152G
GPFF AMBER JO
WULF'S COUNT DOWN 9251C
CANE RIDGE DAPHNE 011D
WULF'S HOME RUN 9226AA
WLCC BLACK PERSUASION

Consigned by: Patriot Farms

Will calve by sale day to PFLR Main Event
PFLR Honey is sired by the popular DHVO Ace 128R, the full brother to DHVO Deuce 123R.



EF Main Stay 541M - Sire of Lots 58 & 59

Ref

Lot
58

PUREBRED • FEMALE • POLLED • DOUBLE BLACK

PFLR Moonbeam

05/30/07 • PFLR 106T • NPF-1881524

BW: 69

CED	BW	WW	YW	MA	CEM	SC	DOC	ST	CW	RE	YG	MR	\$M
11	-0.1	35	69	18	3	0.0	17	N/A	-16	0.08	-0.16	-0.08	39

AUTO BLACK DAKOTA 129J
EF MAIN STAY 541M
EXLR 231J

KRMC BLACK LEGACY 917B
MAGS JUNEY MOON
MAGS ERICA

EXLR DAKOTA 353G
DFLC JET SET BPC 34Y
WULFS GUARDIAN 5074G
EXLR LUVLY 081F
NICO POLLED LEGACY
HOLJO 103
WULFS RAMBLER 8400X
MAGS BIT O HONEY

Consigned by: Patriot Farms

Will calve by sale day to PFLR Main Event
PFLR Moonbeam is a great young female by EF Main Stay 541M. Her dam was one of the good foundation females in the herd.

Lot
59

PUREBRED • BULL • POLLED • DOUBLE BLACK

PFLR Main Event

05/06/07 • PFLR 105T • NPM-1881523

BW: 74

CED	BW	WW	YW	MA	CEM	SC	DOC	ST	CW	RE	YG	MR	\$M
7	1.9	41	84	24	5	0.3	16	N/A	-4	0.04	0.00	0.08	45

AUTO BLACK DAKOTA 129J
EF MAIN STAY 541M
EXLR 231J

MAGS JUMANJI
MAGS LARK

AUTO CITY NIGHTS 214H

EXLR DAKOTA 353G
DFLC JET SET BPC 34Y
WULFS GUARDIAN 5074G
EXLR LUVLY 081F
KRMC BLACK LEGACY 917B
MAGS BLACK & SATIN
COLE FIRST DOWN 46D
MISS WOLFETTE 9049X

Consigned by: Patriot Farms

Selling full possession and 1/2 semen interest.

PFLR Main Event is one of the best individuals born at Patriot Farms. The son of EF Main Stay has done an excellent job on the entire Patriot Farms cow herd. The calves are born small and easily and grow rapidly to weigh heavily at weaning time. He is backed with some of the highest performing seedstock in the industry.

Lot
60

PUREBRED • BULL • HOMO POLLED • DOUBLE BLACK

PBRs Scotch 655S

09/03/06 • PBRs 655S • NPM-1854313

BW: 82 • ADJ WW: 645

CED	BW	WW	YW	MA	CEM	SC	DOC	ST	CW	RE	YG	MR	\$M
8	1.4	49	99	22	7	0.7	26	N/A	31	0.18	0.11	0.10	48

HUNTS HI-LITER 245G
JCL LODESTAR 27L
LOGAN'S CHEERLEADER 280G

JCL BLACK OUT
MAGS KOAL CREEK
MAGS GO IN STYLE

WADDLES COBALT 3106
TNUH MISS C245
COLE FIRST DOWN 46D
TTCC CONFIDENCE MAKER
LRCC TOMAHAWKS TOUCHDOWN
JCL MADELINE
COLE FIRST DOWN 46D
WULF'S MANDARIN 1121A

Consigned by: Patriot Farms

The son of JCL Lodestar is a proven sire and has calves on the ground in the commercial herd. All calves are born small with no problems.

Lot
61

PUREBRED • BULL • DOUBLE POLLED • DOUBLE BLACK

PFLR Gringo

04/26/07 • PFLR 108T • NPM-1881526

BW: 78

CED	BW	WW	YW	MA	CEM	SC	DOC	ST	CW	RE	YG	MR	\$M
3	3.3	50	89	18	-2	0.4	15	N/A	19	0.61	-0.07	-0.09	42

GPFF BLAQUE RULON
KRVN PABLO 011P
EXLR MISS HERITAGE 7384L

EXLR GAUCHO 362K
PBRS MUSIC 434P
MAGS MUSIC ALLEY 127M

BLACK DIAMOND
QUAIL RUN RAMONA BP
EXLR HERITAGE 056H
EXLR 189G
WULFS GUARDIAN 5074G
EXLR ALLIANCE 337G
MAGS JUMANJI
MAGS JAZZ ALLEY 796J

Consigned by: Patriot Farms

PFLR Gringo is a proven calving ease sire. All of his calves on the commercial herd are polled and black.

The Cattle Drive

Lots 101 - 152

Endorsed by the
FULBLOOD LIMOUSIN ALLIANCE

Saturday, October 17, 2009

12:00 pm - Sale cattle are available for viewing

7:00 pm - Board of Directors Meeting

Sunday, October 18, 2009

8:00 am - Members Meeting

12:00 Noon - Complementary Lunch

1:00 p.m. Sale Begins

FULLBLOOD LIMOUSIN ALLIANCE

PRESIDENT Bob Moore

VICE PRESIDENT Glen Parker

SECRETARY/TREASURER Andy McCutcheon

DIRECTORS

Wayne Foley

Bob Stone

Joe Latendresse

Dick Avery

Jason Smith

Paul Ratliff

FULLBLOOD LIMOUSIN ALLIANCE QUARTERLY MEETING

The October meeting will be held in conjunction with the Cattle Drive sale in Lebanon, MO. The Board of Directors meeting will be on 17 October at 7:00 p.m. and the Members meeting on 18 October at 8:00 a.m. Both meetings will be held at J's Family Dining at exit 127 off I-44 in Lebanon, MO.

Semen Tank Auction: To benefit the Fullblood Limousin Alliance



MODEL # SC 20/20
NUMBER OF CANISTERS: 6
OF 1/2 CC STRAWS (10/CANE): 540
OF 1/2 STRAWS (1 LEVEL BULK): 780
OF 1.2 & 2.0 ML VIALS (5/CANE): 150
LIQUID NITROGEN CAPACITY: 20.5 L
NORMAL WORKING DURATION (DAYS): 142
NECK OPENING: 2 INCHES
OVERALL HEIGHT: 28.7 INCHES
OUTSIDE DIAMETER: 14.5 INCHES
CANISTER HEIGHT: 11 INCHES
OLDER TANK, BUT IN EXCELLENT WORKING CONDITION.



MODEL # XC MILLENNIUM 20
OF CANISTERS: 6
OF 1/2 CC STRAWS (10/CANE): 720
OF 1/2 STRAWS (1 LEVEL BULK): 1122
OF 1.2 & 2.0 ML VIALS (5/CANE): 210
LIQUID NITROGEN CAPACITY: 20.5 L
NORMAL WORKING DURATION (DAYS): 140
NECK OPENING: 2.18 INCHES
OVERALL HEIGHT: 25.7 INCHES
OUTSIDE DIAMETER: 14.5 INCHES
CANISTER HEIGHT: 11 INCHES
NEWER TANK, IN EXCELLENT CONDITION.

CONSIGNORS

Dick Avery
1101 Empire Rd.
Parkdale, AR 71661
870-355-4748

David Finney
4819 Hope Dr.
Fort Worth, TX 76114
817-377-2525

Moore Limousin Farms
Bob Moore
14718 E. 186th St. North
Collinsville, OK 74021
918-371-4381

Piney Bay Limousin Ranch
Glen Parker
406 CR 2700
London, AR 72847
501-970-8183

Cody Beach
21825 S. 401st St. W Avenue
Bristow, OK 74010
918-857-5300

Fisher's Limousin
Charles Fisher Jr.
982 Hutchins Ln.
Chipley, FL 32428
850-638-8873

Ollar Limousin Ranch
Paul Ollar
2822 Highland Dr.
Rogers, AR 72756
479-986-0541

Ratliff 3R Bar Ranch
Paul Ratliff
Box 268
Washington, OK 73093
405-640-3674

Carver Farms, LLC
Rod Carver
PO Box 341
Noble, OK 73068
405-650-9101

Glendenning J Bar J Limousin
Jack Glendenning
24300 McDonald Dr.
Lebanon, MO 65536
417-588-6121

Pinegar Limousin
Ed Pinegar
Ty Heavin - manager
850 W. Farm Rd. 56
Springfield, Mo 65803
417-833-2688

Stone Valley Limousin Farm
Bob Stone & Karen Ahlden
PO Box 96
Cashion, OK 73016
405-433-2748



Lot
101

Selling Fall Possession (Nov 1-May 1) and Semen Packages through sale day.

2009 AALF Grand Champion Fullblood Bull

CWBL Independence is one of the most unique fullbloods to surface in a long time. His moderate frame, sound structure, and smooth appearance has caught attention from fullblood and purebred breeders alike. His career began at a very early age, when at six months old he captured the title of Overall Reserve Grand Champion Fullblood Bull, at the 2008 All American Limousin Futurity. Later he would become the Gold Medal Fullblood Bull for 2008. In 2009 his quality shined again as he captured the Grand Champion Fullblood Bull title at the AALF.

While his show ring accomplishments are impressive, equally so is his performance and pedigree. Raised by a first calf heifer, Independence weaned at an adjusted 696 pounds, and had a yearling scrotal of 36cm. Independence's sire, Polled Independence 32E, was a polled bull raised in the D-M Beach herd in the mid 90's and proved to sire moderate framed and easy fleshing cows, some of which remain a valued part of our cow herd. His mother, LL Daffodil 574, was the Reserve Grand Champion Fullblood Female at the 2007 AALE, and is sired by our senior herd sire, EDGE Endeavor 202M.

Whether your a fullblood, purebred, limflex, or commercial cattlemen, Independence has something to offer your operation. Contact Keith Kissee at KK Seedstock, or call Cody at D-M Beach Limousin to invest in Independence today!



Lot
102

Polled Progress is a big time, heavy muscled son of Polled Excel and Amber Pearl (Pub x Amber Krug). He has a great disposition and is halter broken. He was the Division II Champion at the 2009 All-American Futurity. His dam was one of the high selling lots in the 2005 Eastfield Sale. Polled Excel was the Grand Champion Fullblood Bull at the 2008 All-American Futurity and his offspring are a very impressive group and some of the best ever at Stone Valley and Carver Farms. Polled Progress is big footed, deep rib and flank, clean fronted, big boned with great performance and EPDs.

Lot
101

FULLBLOOD • BULL • SCURRED • RED

CWBL Independence

01/11/08 • CWBL 574U • NFM-1900807

BW: 91 • ADJ WW: 696

CED	BW	WW	YW	MA	CEM	SC	DOC	ST	CW	RE	YG	MR	SM
4	2.8	51	89	16	4	0.3	15	N/A	36	0.72	-0.12	-0.08	43

MH VELOCITY
POLLED INDEPENDENCE 32E
PSL CRIMSON LADY

EDGE ENDEAVOR 202M
LL DAFFODIL 574
LL DAFFODIL 222

TEXS RANGER PRIMO
HI CTRY POLL WONDER DJMW5
SEVEN FORTY SEVEN
MISS MK MY TIME
EAFF REJUVENATOR 260J
EDGE RHAPSODY 034E
BACCARAT
EZ GEM

Consigned by: Cody Beach

Lot
102

FULLBLOOD • BULL • POLLED • RED

CFSV Polled Progress 521U

05/29/08 • CFSV 521U • NFM-1928494

BW: 70 • ADJ WW: 816

CED	BW	WW	YW	MA	CEM	SC	DOC	ST	CW	RE	YG	MR	SM
8	1.9	49	82	26	1	0.2	7	N/A	7	0.49	-0.23	-0.07	44

LENAPE POLLED LIBERTY
CFSV POLLED EXCEL 315S
SVL POLLED ELATION 039N

PUB
EAFF AMBER PEARL 419M
SOGF AMBER KRUG 264B

QUAIL RUN ROBERT RP
LENAPE PRIDE
STZZ POLLED GUTHRIE 826H
SVL POLLED ELEGANCE 608J
MIMOSA
JIGUE
GOLDENVIEWKRUGERRAND 250K
EJPS AMBER

Consigned by: Carver Farms/Stone Valley Limousin



Lot
103



Lot
104



FULLBLOOD • FEMALE • DOUBLE POLLED • RED

Ruby Red

01/01/08 • SKIP 98U • NFF-1893118

BW: 70 • ADJ WW: 653 • ADJ YW: 869

CED	BW	WW	YW	MA	CEM	SC	DOC	ST	CW	RE	YG	MR	\$M
6	2.2	45	77	31	0	0.1	11	14	-1	0.33	-0.19	-0.07	42

YKCC TOP LINE 180X
STZZ POLLED YUKON 50E
MASH WHISPER

STZZ POLLED GUTHRIE 826H
PBRS ROSEMARY 565R
SPECIAL GRACE

WLCC BOTTOM LINE
CMCC 501T
MASH UNDERWRITER
DEUX AMIS HONEY
STZZ POLLED YUKON 50E
THUNDERATION
SOGF SPECIAL K 247B
C L GRACE

Consigned by: Dick Avery

AI 7/1/09 to Uranus

Ruby Red is a double polled (maybe homozygous) daughter of STZZ Polled Yukon 50E. She is from one of the high quality polled fullblood females in the Avery program.



FULLBLOOD • FEMALE • POLLED • RED

CFSV Polled Pearl 515U

05/02/08 • CFSV 515U • NFF-1903523

BW: 74

CED	BW	WW	YW	MA	CEM	SC	DOC	ST	CW	RE	YG	MR	\$M
3	3.3	53	86	24	0	0.4	6	N/A	11	0.60	-0.27	-0.09	45

LENAPE POLLED LIBERTY
CFSV POLLED EXCEL 315S
SVL POLLED ELATION 039N

HARVEST OLYMPUS
EAFF HARVEST PEARL 654R
EAFF AMBER PEARL 419M

QUAIL RUN ROBERT RP
LENAPE PRIDE
STZZ POLLED GUTHRIE 826H
SVL POLLED ELEGANCE 608J
WINTERSHALL JUPITER
LABORIEUSE
PUB
SOGF AMBER KRUG 264B

Consigned by: Carver Farms/Stone Valley Limousin

Open

Polled Pearl is a very impressive, deep-ribbed and flanked daughter of Polled Excel and a Harvest Olympus daughter from the Amber Krug Family. She is super clean fronted, long and level topped and very eye-appealing. This big volume heifer has excellent EPDs and is certainly one of the highlights at this sale.



FULLBLOOD • FEMALE • HOMO POLLED • RED

SVL Polled Nancy 443T

09/19/07 • RSVL 443T • NFF-1909936

BW: 74 • ADJ WW: 741

CED	BW	WW	YW	MA	CEM	SC	DOC	ST	CW	RE	YG	MR	\$M
3	3.3	53	86	24	0	0.4	6	N/A	11	0.60	-0.27	-0.09	45

1-WAY POLLED JUSTICE
1-WAY JUST MACHO
POLL YUKON GOLD

STZZ POLLED GUTHRIE 826H
SVL POLLED NAOMI 232R
SVL MISS NADINE 308F

HARVEST OLYMPUS
CYMBALINE EBY EBY 42C
STZZ POLLED YUKON 50E
VERBEEK'S ECLIPSE
STZZ POLLED YUKON 50E
THUNDERATION
TYPESETTER STBR1 18X
WC MISS NADINE 14D

Consigned by: Stone Valley Limousin

Selling ½ interest with no possession with the option to double the bid for full possession and full interest.

AI 7/19/09 to SVL Polled Exclusive 412T

Polled Nancy is a homozygous polled daughter of Just Macho and an awesome Guthrie daughter from the Nadine family. She is correct in her structure, deep ribbed, big boned and has lots of eye appeal. The Nadine family continues to produce offspring that are a cut above the rest. She will have a homozygous polled calf sired by the popular Polled Exclusive. This fancy eye-appealing heifer offers many possibilities as a breeding piece.



FULLBLOOD • FEMALE • POLLED • RED

Lady

01/07/08 • SKIP 100U • NFF-1893120

BW: 68 • ADJ WW: 726 • ADJ YW: 961

CED	BW	WW	YW	MA	CEM	SC	DOC	ST	CW	RE	YG	MR	\$M
1	3.6	54	91	34	-1	0.4	7	17	9	0.49	-0.22	-0.07	45

YKCC TOP LINE 180X
STZZ POLLED YUKON 50E
MASH WHISPER

HARVEST OLYMPUS
BABE
BEAUTY

WLCC BOTTOM LINE
CMCC 501T
MASH UNDERWRITER
DEUX AMIS HONEY
WINTERSHALL JUPITER
LABORIEUSE
ORION
HALE ROMANCE

Consigned by: Dick Avery

AI 4/16/09 to AUTO Cliff Hanger

This horned female from the polled breeding of STZZ Polled Yukon 50E is from a high quality double-bred daughter of Harvest Olympus. Identically bred seedstock have been some of the most successful in the fullblood breeding.

FULLBLOOD • FEMALE • HORNED • RED

Lot 107

Miss K

10/15/07 • SKIP 89T • NFF-1893111

BW: 76 • ADJ WW: 651 • ADJ YW: 864

CED	BW	WW	YW	MA	CEM	SC	DOC	ST	CW	RE	YG	MR	\$M
-4	5.3	51	85	28	-10	0.2	11	17	9	0.61	-0.29	-0.11	43

GOLDENVIEWKRUGERRAND 250K
SOGF SPECIAL K 247B
SOGF LONESOME DOVE 832W

HARVEST OLYMPUS
D'HANIS GLORY 634N
STBR ZANDRA 603K

K & D BEAU FRANCO KDS 3F
IGUANE
SPECIAL EDITION
SOGF UNCLOUDED 68U
WINTERSHALL JUPITER
LABORIEUSE
SOGF TOTAL 600F
STBR LADY SPLENDOR 781E

Consigned by: Dick Avery

AI 5/26/09 to TEXS Ranger Ted

Miss K is bred from some of the most proven fullblood lines in the industry. She is from the STBR Wendy's Punchette cow family that has formed one of the cornerstones in Limousin bloodlines.



SOGF Special K - Sire of Lots 107 & 108

Ref

FULLBLOOD • FEMALE • HORNED • RED

Lot 108

Rosie

11/16/07 • SKIP 92T • NFF-1893113

BW: 75 • ADJ WW: 605 • ADJ YW: 818

CED	BW	WW	YW	MA	CEM	SC	DOC	ST	CW	RE	YG	MR	\$M
3	3.4	44	76	25	-3	0.0	6	16	8	0.51	-0.26	-0.12	41

GOLDENVIEWKRUGERRAND 250K
SOGF SPECIAL K 247B
SOGF LONESOME DOVE 832W

ORION
KKCC DOLL GOOD GIRL
KKCC DOLL DIANA

K & D BEAU FRANCO KDS 3F
IGUANE
SPECIAL EDITION
SOGF UNCLOUDED 68U
HARVEST OLYMPUS
GOLDENVIEW LADY GVC 233K
TEXS RANGER EL PRESIDENTE
TEXS STAR DULCE

Consigned by: Dick Avery

AI 5/17/09 to Uranus

Rosie is a powerful daughter of SOGF Special K and from the cow family that stems from TEXS Star Dolores. Foundation genetics are offered in this female from the Avery program.



Lenape Polled Liberty - Sire of Lot 109

Ref

FULLBLOOD • FEMALE • DOUBLE POLLED • RED

Lot 109

Doll

11/15/07 • SKIP 93T • NFF-1893114

BW: 65 • ADJ WW: 568 • ADJ YW: 796

CED	BW	WW	YW	MA	CEM	SC	DOC	ST	CW	RE	YG	MR	\$M
11	2.0	34	60	19	5	-0.1	4	N/A	N/A	N/A	N/A	N/A	N/A

QUAIL RUN ROBERT RP
LENAPE POLLED LIBERTY
LENAPE PRIDE

C&S NO FEAR 611F
POL SKIP
RED ROSE

STZZ POLLED YUKON 50E
MCM REBECCA MEB 29U
MH CHIEF HONCHO
LENAPE LITTLE LADY
MH VELOCITY
C&S DAMASCUS ROSE 428D
TEXS RANGER TED
HAWES NATASHA 367V

Consigned by: Dick Avery

AI 5/17/09 to Uranus

Doll is from the Avery program and has the quality you would expect from that breeding herd. The moderately framed female is bred from several generations of Avery breeding.

FULLBLOOD • FEMALE • HORNED • RED

Lot 110

HHBB Holly 249T

01/28/07 • HHBB 249T • NFF-1863902

BW: 83

CED	BW	WW	YW	MA	CEM	SC	DOC	ST	CW	RE	YG	MR	\$M
2	3.9	33	61	20	1	N/A	N/A	N/A	N/A	N/A	N/A	N/A	N/A

WRC PUNCH
JOKER
LAURAS AMULET

WBR HERITAGE 158B
HHBB DARLENE 145D
BORDELONS TINA

MIMOSA
LEILA
LB COLD CASH 442N
LAURA'S ELEGANT
HARVEST OLYMPUS
CHR SWEET AS HONEY
WCRL HOOK SHOT
SPITZ TONYA 511T

Consigned by: Booohr Brothers

PE 1/15/09-7/17/09 to Joker

HHBB Holly 249T is rich in the blood of WRC Punch. The booker program has been built around the solid bloodlines represented here.



Lot
111



FULLBLOOD • FEMALE • HORNE • RED

Auto Rosie 400R

01/31/05 • AUTO 400R • NFF-1794167

BW: 60 • ADJ WW: 477

CED	BW	WW	YW	MA	CEM	SC	DOC	ST	CW	RE	YG	MR	\$M
3	3.6	54	85	22	2	0.4	9	N/A	-4	0.54	-0.26	-0.09	45

STBR KIPPER 639K
COJR HIGH TIDE 236M
STBR LILITH 208G

HARVEST OLYMPUS
OAKM LADY PRECIOUS 434E
OAKM MISS PRISSY 285V

SOGF TOTAL 600F
STBR LADY SHOWTIME 341H
URANUS
STBR WENDY'S PUNCHETTE
WINTERSHALL JUPITER
LABORIEUSE
TEXS RANGER EL PRESIDENTE
TEXS STAR DELIGHT

Consigned by: Pinegar Limousin

Due 4/12/10 to AUTO Cliff Hanger

LOT 111A - AUTO Anastasia 626W • Polled, Black
Lim-Flex (75) Heifer Calf by AUTO New Design. Born 03/26/09.
EPD's: CED: 5, BW: 1.9, WW: 47, YW: 87, MA: 26, CEM: 2, SC: N/A

AUTO Rosie 400R along with her sister, AUTO Oakie 414R, are two excellent breeding full-blood females. COJR High Tide 236M has sired more moderate and deeper bodied progeny. An outstanding Lim-Flex heifer calf is at side of this good producing cow.



FULLBLOOD • FEMALE • HORNE • RED

Auto Oakie 414R

02/23/05 • AUTO 414R • NFF-1794177

BW: 70 • ADJ WW: 502

CED	BW	WW	YW	MA	CEM	SC	DOC	ST	CW	RE	YG	MR	\$M
3	3.4	53	84	22	2	0.4	9	N/A	3	0.58	-0.25	-0.12	43

STBR KIPPER 639K
COJR HIGH TIDE 236M
STBR LILITH 208G

HARVEST OLYMPUS
OAKM LADY PRECIOUS 434E
OAKM MISS PRISSY 285V

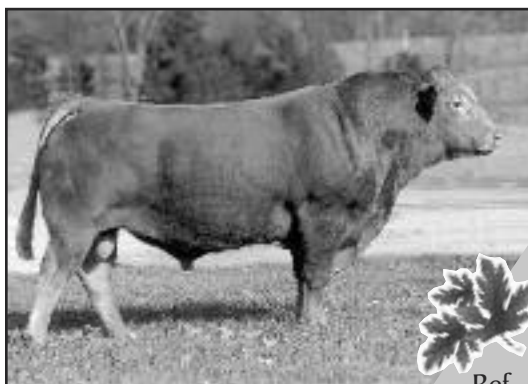
SOGF TOTAL 600F
STBR LADY SHOWTIME 341H
URANUS
STBR WENDY'S PUNCHETTE
WINTERSHALL JUPITER
LABORIEUSE
TEXS RANGER EL PRESIDENTE
TEXS STAR DELIGHT

Consigned by: Pinegar Limousin

Due 4/12/10 to AUTO Cliff Hanger

LOT 112A - AUTO Kelsey 651W • Polled, Black
Purebred Heifer Calf by AUTO Power Train 101R. Born 05/04/09.
EPD's: CED: 7, BW: 2.4, WW: 52, YW: 91, MA: 21, CEM: 6, SC: 0.6

AUTO Oakie 414R has a nicely balanced set of EPDs due to her solid proven pedigree and her producing ability. The fullblood female has an excellent polled and black purebred heifer calf at side.



Ref

AUTO Cliff Hanger 194D - Sire of Lot 112



FULLBLOOD • FEMALE • HORNE • RED

Auto Paris 880P

09/07/04 • AUTO 880P • NFF-1772445

BW: 72 • ADJ WW: 528 • ADJ YW: 782

CED	BW	WW	YW	MA	CEM	SC	DOC	ST	CW	RE	YG	MR	\$M
8	1.8	31	65	24	7	0.1	-4	14	-7	0.31	-0.15	-0.07	38

TEXS RANGER PRIMO
AUTO CLIFF HANGER 194D
YKCC HEART THROB 141W

WRC PUNCH
FORL MISS PUNCH 90A
FORL 90X

TEXS RANGER EL PRESIDENTE
TEXS STAR LUV
URANUS
MS TGJS PETTICOAT 129 R
MIMOSA
LEILA
SEVEN FORTY SEVEN
LL SWEET KRISTY 301R

Consigned by: Pinegar Limousin

Due 4/23/10 to AUTO American Idol

LOT 113A - AUTO Princess 601W • Horned, Red
Fullblood Heifer Calf by AUTO Change of Heart 126M. Born 01/01/09.
EPD's: CED: 3, BW: 3.1, WW: 40, YW: 76, MA: 26, CEM: 3, SC: N/A

This fullblood pair adds much history and pedigree worth to the offspring. FORL Miss Punch 90A was the first female purchased for the Pinegar Limousin program. This is one of the good fullblood cow families in North America.



Ref

COJR High Tide 236M - Sire of Lot 113



FULLBLOOD • FEMALE • POLLED • RED

Cosmic Champ

05/12/04 • OLAR 9P • NFF-1756449

BW: 66

CED	BW	WW	YW	MA	CEM	SC	DOC	ST	CW	RE	YG	MR	SM
8	3.0	46	75	22	5	-0.4	5	N/A	N/A	N/A	N/A	N/A	N/A

SOGF SPECIAL K 247B D'HANIS TRIFECTA 129K SLF HELEN 801H	GOLDENVIEWKRUGERRAND 250K SOGF LONESOME DOVE 832W MH VELOCITY MH NORTH DALLAS RAGONDIN OCEANIE TEXS RANGER EL PRESIDENTE TEXS STAR DOLORES
URANUS HL LACEY TEXS STAR DIANA	

Consigned by: Ollar Limousin

PE 4/22/090-10/15/09 to Double Dutch (Safe)

LOT 114A - OLAR 2W • Horned, Red

Fullblood Bull Calf by Double Dutch. Born 02/15/09.

EPD's: CED: 7, BW: 3.2, WW: 45, YW: 75, MA: 23, CEM: 4, SC: -0.2

Solid fullblood cows are reflected in the maternal aspect of this pedigree. A full sister sells.



Ref

EAFF Polled Pugalist -Reference sire to several of the Ollar consignments



FULLBLOOD • FEMALE • HORNED • RED

Auto Penelope 530R

06/30/05 • AUTO 530R • NFF-1922053

BW: 78 • ADJ WW: 594 • ADJ YW: 906

CED	BW	WW	YW	MA	CEM	SC	DOC	ST	CW	RE	YG	MR	SM
1	4.3	46	79	27	-3	N/A	N/A	N/A	5	0.51	-0.24	-0.10	42

HARVEST OLYMPUS AUTO CHANGE OF HEART 126M STBR DEMETRIA 669D	WINTERSHALL JUPITER LABORIEUSE WRC PUNCH STBR WENDY'S KIMMIE 194A GOLDENVIEWKRUGERRAND 250K SOGF LONESOME DOVE 832W TEXS RANGER EL PRESIDENTE OAKM MISS DUEE 183V
SOGF SPECIAL K 247B AUTO SPECIAL 952J OAKM LADY NEWTON 369D	

Consigned by: Pinegar Limousin

PE 9/1/09-10/15/09 to AUTO Mountain Peak

LOT 115A - AUTO Wyonna 617W • Polled, Black

Purebred Heifer Calf by AUTO Moonshine 555S. Born 02/21/09.

EPD's: CED: 3, BW: 2.9, WW: 46, YW: 83, MA: 25, CEM: -1, SC: N/A

This female plus her dam that sells make an outstanding foursome. These foundation females have some of the highest milk numbers in the offering. She carries the service of AUTO Mountain Peak, the full brother of AUTO Cliff Hanger.



FULLBLOOD • FEMALE • HORNED • RED

Auto Special 952J

09/12/99 • AUTO 952J • NFF-1921976

BW: 71 • ADJ WW: 565 • ADJ YW: 897

CED	BW	WW	YW	MA	CEM	SC	DOC	ST	CW	RE	YG	MR	SM
4	3.7	41	71	27	-4	-0.1	8	12	2	0.36	-0.21	-0.10	40

GOLDENVIEWKRUGERRAND 250K SOGF SPECIAL K 247B SOGF LONESOME DOVE 832W	K & D BEAU FRANCO KDS 3F IGUANE SPECIAL EDITION SOGF UNCLOUDED 68U SEVEN FORTY SEVEN TEXS STAR GUADALUPE WRC PUNCH MISS ECLAIREUR XLZ 811K
TEXS RANGER EL PRESIDENTE OAKM LADY NEWTON 369D OAKM MISS DUEE 183V	

Consigned by: Pinegar Limousin

Due 3/30/10 to AUTO Cliff Hanger

LOT 116A - AUTO Princess 631W • Polled, Black

Purebred Heifer Calf by AUTO Moonshine 555S. Born 04/01/09.

EPD's: CED: 4, BW: 2.4, WW: 44, YW: 78, MA: 24, CEM: -2, SC: 0.1

AUTO Special 952J is a foundation daughter of SOGF Special K 247B. Backed with superior lineage, this mature female has done a great job and has an excellent heifer calf at side.



FULLBLOOD • FEMALE • HORNED • RED

Auto Ms Type 950J

09/12/99 • AUTO 950J • NFF-1921977

BW: 70 • ADJ WW: 604 • ADJ YW: 934

CED	BW	WW	YW	MA	CEM	SC	DOC	ST	CW	RE	YG	MR	SM
2	4.1	46	78	22	0	0.3	7	9	12	0.57	-0.24	-0.08	43

ORION TYPESETTER STBR118X HIGH RISING STAR 515U	HARVEST OLYMPUS GOLDENVIEW LADY GVC 233K MV HIGH CLIMBER WLCC SOLITAIRE GOLDENVIEWKRUGERRAND 250K SOGF LONESOME DOVE 832W GONZAGUE BLAISE SJL 2H EV VERY WIGGLY
SOGF SPECIAL K 247B KTWO MISS SPECIAL K 63G K2 GONZAGUE GAL	

Consigned by: Pinegar Limousin

Due 5/10/10 to AUTO American Idol

LOT 117A - AUTO Winter 620W • Polled, Black

Purebred Heifer Calf by AUTO Moonshine 555S. Born 03/06/09.

EPD's: CED: 3, BW: 2.8, WW: 46, YW: 82, MA: 22, CEM: 0, SC: 0.3

AUTO Miss Type 950J is one of the few Typesetter females still in production. The sire has been mated for his good-milking females. A polled and black heifer calf is at side.



Lot
116

The Cattle Drive



FULLBLOOD • FEMALE • HORNED • RED

Trifecta's Harvest

BW: 70 • ADJ WW: 480 • ADJ YW: 796

07/01/03 • OLAR 006N • NFF-1793026

CED	BW	WW	YW	MA	CEM	SC	DOC	ST	CW	RE	YG	MR	SM
2	4.0	47	79	25	-3	0.4	9	N/A	N/A	N/A	N/A	N/A	N/A

SOGF SPECIAL K 247B
D'HANIS TRIFECTA 129K
SLF HELEN 801H

HARVEST OLYMPUS
OLAR ROYAL HARVEST 002J
LAURA'S MISSISSIPPI QUEEN

GOLDENVIEWKRUGERRAND 250K
SOGF LONESOME DOVE 832W
MH VELOCITY
MH NORTH DALLAS
WINTERSHALL JUPITER
LABORIEUSE
TEXS RANGER PRIMO
TEXS STAR GOLLY

Consigned by: Ollar Limousin

PE 3/15/09-4/22/09 to EAFF Polled Pugalist 633R (Safe)

LOT 118A - OLAR 6W • Horned, Red

Fullblood Heifer Calf by Double Dutch. Born 03/06/09.

EPD's: CED: 4, BW: 3.7, WW: 46, YW: 76, MA: 24, CEM: 0, SC: 0.3

Trifecta's Harvest has some of the great lines in the breed. She sells bred for guaranteed polled calf by EAFF Polled Pugalist 633R.



Edgemont Rejuvenator 206M - Sire of Lot 121



FULLBLOOD • FEMALE • DOUBLE POLLED • RED

Poll Position

BW: 74

02/16/04 • OLAR 3P • NFF-1756445

CED	BW	WW	YW	MA	CEM	SC	DOC	ST	CW	RE	YG	MR	SM
5	3.6	43	74	17	3	0.0	4	N/A	N/A	N/A	N/A	N/A	N/A

SOGF SPECIAL K 247B
D'HANIS TRIFECTA 129K
SLF HELEN 801H

GUNSMOKE
STZZ POLLED GINNIE 703G
SHOWTIME'S POLLED DREAM

GOLDENVIEWKRUGERRAND 250K
SOGF LONESOME DOVE 832W
MH VELOCITY
MH NORTH DALLAS
ORION
HI CTYR POLL WONDER DJMW5
MH HIGH COUNTRY WRANGLER
SIRLOINWHIPPOORWILLSFL105

Consigned by: Ollar Limousin

PE 4/22/09-10/15/09 to Double Dutch (Safe)

LOT 119A - OLAR 13W • Horned, Red

Fullblood Bull Calf by Double Dutch. Born 04/03/09.

EPD's: CED: 5, BW: 3.5, WW: 44, YW: 74, MA: 20, CEM: 3, SC: 0.1

This polled female has a polled bull calf at side (possibly homozygous) by EAFF Polled Pugalist 633R. This good young polled pair has great earning power offered by the Paul Ollar program.



FULLBLOOD • FEMALE • HORNED • RED

River Regency 157R

BW: 85

04/25/05 • RYER 157R • NFF-1834659

CED	BW	WW	YW	MA	CEM	SC	DOC	ST	CW	RE	YG	MR	SM
-1	6.1	53	89	28	2	0.2	5	N/A	19	0.75	-0.27	-0.08	45

OAKM LORD SATURN 37J
CRKT APOLLO
CRKT 233G

HARVEST OLYMPUS
LAURA'S FIGMENT
SOGF ORION SHOW 233B

OAKM LORD JUPITER 26D
LAURA'S ACCENT
ORION
BISHOPS ANNIE
WINTERSHALL JUPITER
LABORIEUSE
ORION
WRC SHOWCASE 274N

Consigned by: Piney Bay Limousin

AI 8/31/09 to SOGF Special K

LOT 120A - GLPA Willie 74W • Horned, Red

Fullblood Bull Calf by Texs Ranger Ted. Born 06/16/09.

EPD's: CED: 8, BW: 5.5, WW: 45, YW: 74, MA: 26, CEM: 9, SC: -0.3

This is a great fullblood pair from the Piney Bay herd. Glen Parker is one of the strongest supporters of Limousin and he is an active voice for the Fullblood Alliance. A herd sire by TEXS Ranger Ted is at side.



FULLBLOOD • FEMALE • HORNED • RED

Rejuvenator's Wendy

BW: 70

11/17/04 • OLAR 015P • NFF-1793029

CED	BW	WW	YW	MA	CEM	SC	DOC	ST	CW	RE	YG	MR	SM
-1	6.3	57	92	22	2	0.3	N/A	N/A	26	0.74	-0.26	-0.06	47

EAFF REJUVENATOR 260J
EDGEMONT REJUVENATOR 206M
EDGE RHAPSODY 034E

ORION
STBR MISS AMARYLLIS 795E
STBR WENDY'S PUNCHETTE

HARVEST OLYMPUS
SOGF AMBER KRUG 264B
URANUS
GOLDENVIEW RHAPSODY GVC
HARVEST OLYMPUS
GOLDENVIEW LADY GVC 233K
WRC PUNCH
BISHOPS SAHARA

Consigned by: Ollar Limousin

PE 7/1/09-10/15/09 to Double Dutch

LOT 121A - OLAR 18W • Horned, Red

Fullblood Bull Calf by Double Dutch. Born 02/08/09.

EPD's: CED: 3, BW: 4.9, WW: 51, YW: 83, MA: 22, CEM: 2, SC: 0.2

Excellent performance numbers are evident in this young female. She traces to the all-familial STBR Wendy's Punchette.



FULLBLOOD • FEMALE • HORNED • RED

D'Hanis Andrea 739R

BW: 86 • ADJ WW: 612 • ADJ YW: 870

05/15/05 • DHVO 739R • NFF-1807697

CED	BW	WW	YW	MA	CEM	SC	DOC	ST	CW	RE	YG	MR	SM
4	4.4	44	81	18	1	0.2	10	N/A	17	0.57	-0.19	-0.09	41

RACHELS HAMLET
EAFF HAMLET 272K
KERC AMANDA 15A

ORION
STBR WENDY'S KIMMIE 194A
DEUX AMIS KISSER

RACHELS EUREKA
STAVELEYWOLD SUZANNE
GOLDENVIEWKRUGERRAND 250K
BILD LADY ASTRA
HARVEST OLYMPUS
GOLDENVIEW LADY GVC 233K
GENDARME
NORDIC DEBONNAIRE XIM 11D

Consigned by: Piney Bay Limousin

LOT 122A - GLPA Wyatt 76W • Horned, Red

Fullblood Bull Calf by Uranus. Born 07/11/09.

EPD's: CED: 9, BW: 2.7, WW: 43, YW: 77, MA: 20, CEM: 7, SC: -0.3

This female is by an outcross sire from one of the oldest and most familiar lines in the industry. A herd sire prospect is at side by Uranus. Another outstanding pair from the Glen Parker breeding herd.

Lot 123 FULLBLOOD • FEMALE • HORNED • RED

Royal Run

12/21/03 • OLAR 18N • NFF-1756453

BW: 72

CED	BW	WW	YW	MA	CEM	SC	DOC	ST	CW	RE	YG	MR	\$M
5	3.6	42	73	24	0	0.2	12	N/A	N/A	N/A	N/A	N/A	N/A

SOGF SPECIAL K 247B
D'HANIS TRIFECTA 129K
SLF HELEN 801H

GOLDENVIEWKRUGERRAND 250K
SOGF LONESOME DOVE 832W
MH VELOCITY
MH NORTH DALLAS
TEXS RANGER EL PRESIDENTE
TEXS STAR LUV
COLORADO 150
TEXS STAR GABRIELLA

Consigned by: Ollar Limousin

PE 7/15/09-10/15/09 to Double Dutch

LOT 123A - OLAR 20W • Horned, Red
Fullblood Heifer Calf by Double Dutch. Born 07/13/09.
EPD's: CED: 6, BW: 3.5, WW: 43, YW: 74, MA: 24, CEM: 2, SC: 0.2

There is no need for an introduction to this solid and noted fullblood pedigree. The cattle stemming from TEXS Star Golly have greatly enhanced performance of the breed.

Lot 124 FULLBLOOD • FEMALE • HORNED • RED

Irish Racer

10/14/03 • OLAR 19N • NFF-1756454

BW: 61 • ADJ WW: 433

CED	BW	WW	YW	MA	CEM	SC	DOC	ST	CW	RE	YG	MR	\$M
5	3.0	41	70	24	-2	0.1	N/A	N/A	N/A	N/A	N/A	N/A	N/A

SOGF SPECIAL K 247B
D'HANIS TRIFECTA 129K
SLF HELEN 801H

GOLDENVIEWKRUGERRAND 250K
SOGF LONESOME DOVE 832W
MH VELOCITY
MH NORTH DALLAS
SOGF SPECIAL K 247B

COSMO TOPPER
TOP OF THE MORNING
LAURA'S JACKIE

RL TIP TOP
MH HARVEY'S HERO
LAURA'S MISSISSIPPI QUEEN

Consigned by: Ollar Limousin

PE 8/1/09-10/1/09 to Double Dutch

LOT 124A - OLAR 21W • Horned, Red
Fullblood Bull Calf by Double Dutch. Born 07/17/09.
EPD's: CED: 6, BW: 3.2, WW: 42, YW: 72, MA: 24, CEM: 1, SC: 0.1

An excellent pair, and the female is in the prime of her life.

Lot 125 FULLBLOOD • FEMALE • DOUBLE POLLED • RED

Polled Victoria

03/14/06 • FNNY 712S • NFF-1839424

BW: 81

CED	BW	WW	YW	MA	CEM	SC	DOC	ST	CW	RE	YG	MR	\$M
7	2.6	36	64	15	5	-0.2	-1	N/A	6	0.39	-0.15	-0.05	40

QUAIL RUN ROBERT RP
LENAPE POLLED LIBERTY
LENAPE PRIDE

STZZ POLLED YUKON 50E
MCM REBECCA MEB 29U
MH CHIEF HONCHO
LENAPE LITTLE LADY
GUNSMOKE
SHOWTIME'S POLLED DREAM
URANUS
SHOTT'S NATASHA

Consigned by: David Finney

Open

LOT 125A - Heifer Calf • Polled, Red
Fullblood Heifer Calf by Polled Tom. Born 08/02/09.
EPD's: CED: 4, BW: 5.7, WW: 62, YW: 82, MA: 18, CEM: 4, SC: 0.1

Polled Victoria is stacked in highly productive polled fullblood lineage

Lot 126 FULLBLOOD • FEMALE • POLLED • RED

Polled Olga

04/14/04 • FNNY 243P • NFF-1839296

BW: 80

CED	BW	WW	YW	MA	CEM	SC	DOC	ST	CW	RE	YG	MR	\$M
4	4.6	50	94	20	6	0.3	N/A	17	9	0.37	-0.11	-0.09	43

TEXS RANGER PRIMO
MH VELOCITY
HI CTRY POLL WONDER DJMW5

TEXS RANGER EL PRESIDENTE
TEXS STAR LUV
ROUSTAN
HI COUNTRY JMD 28T
ORION
OAKM MONIQUE 720Y
OAKM LORD OLYMPIAD 05B
OAKM LADY ELISHA 821B

OAKM LORD TUNICA 148C
OAKM LADY ELLA 714H
OAKM LADY ELLA 487E

Consigned by: David Finney

Open

LOT 126A - BULL Calf • Polled, Red
Fullblood Bull Calf by Polled Tom. Born 08/03/09.
EPD's: CED: 3, BW: 5.9, WW: 55, YW: 97, MA: 20, CEM: 5, SC: 0.3

Polled Tom is an outcross polled fullblood sire, that traces back to the national champion, OAKF Peggy Sue 9411X.

Lot 127 FULLBLOOD • FEMALE • DOUBLE POLLED • RED

J Bar J Tease 726T

04/01/07 • GLDL 726T • NFF-1872030

BW: 78 • ADJ WW: 504

CED	BW	WW	YW	MA	CEM	SC	DOC	ST	CW	RE	YG	MR	\$M
7	2.4	38	68	18	2	-0.2	3	N/A	5	0.35	-0.14	-0.09	39

QUAIL RUN ROBERT RP
LENAPE POLLED LIBERTY
LENAPE PRIDE

STZZ POLLED YUKON 50E
MCM REBECCA MEB 29U
MH CHIEF HONCHO
LENAPE LITTLE LADY
MH HIGH COUNTRY WRANGLER
SCF JANGLE 808W
LB COLD CASH 442N
DEBONNAIRE'S GLORY 288K

MH WHIPSTICH
GC ENTICE 999J
MATL MORNING GLORY

Consigned by: Glendenning J Bar J

Open

LOT 127A - J BAR J WINE TESTER 921W • Polled, Red
Fullblood Bull Calf by Denison Polled Pub. Born 08/03/09.
EPD's: CED: 13, BW: 1.2, WW: 36, YW: 68, MA: 19, CEM: 4, SC: -0.3

J Bar J Tease 726T is a productive polled female that goes back to one of the great foundation cows in the industry. She has a superior herd sire prospect at side by EAFF Polled Pugalist 633R



Lenape Polled Liberty - Sire of Lots 125 & 127

The Cattle Drive



EAFF Polled Hummer 50P - Sire of Lot 129A

Ref



FULLBLOOD • FEMALE • HORNED • RED

BEMS Miss Teddie

BW: 81 • ADJ WW: 633

09/11/06 • BEMS 231S • NFF-1872504

CED	BW	WW	YW	MA	CEM	SC	DOC	ST	CW	RE	YG	MR	\$M
9	2.0	39	73	21	2	-0.2	5	11	5	0.45	-0.18	-0.07	41

MINE GOLD MEDAL 436G
EAFF MR MEDALIST 252J
OAKF SIENNA 9814X

STZZ POLLED YUKON 50E
BEMS MISS PATTY
OAKM LADY 372D

SOGF SPECIAL K 247B
MLC WRANGLER QUEEN 337C
TEXS RANGER PRIMO
OAKF SIENNA
YKCC TOP LINE 180X
MASH WHISPER
TEXS RANGER TED
OAKM FIREFLY 208V

Consigned by: Moore Limousin Farms

LOT 129A -HEIFER CALF • Polled, Red

Fullblood Heifer Calf by EAFF Polled Hummer 530P. Born 09/15/09.
EPD's: CED: 7, BW: 2.5, WW: 47, YW: 82, MA: 24, CEM: -2, SC: 0.0

One of the most committed fullblood breeders is Bob Moore. The president of the Fullblood Alliance is a tireless worker and promoter of the Limousin breed. He has consigned a tremendous pair with this daughter of EAFF Mr. Medalist.



Lot
131



FULLBLOOD • FEMALE • HOMO POLLED • RED

EAFF Polled Gayle 665R

BW: 90

09/16/05 • EAFF 665R • NFF-1810207

CED	BW	WW	YW	MA	CEM	SC	DOC	ST	CW	RE	YG	MR	\$M
5	2.7	41	71	18	2	0.1	7	N/A	7	0.40	-0.17	-0.07	41

QUAIL RUN ROBERT RP
LENAPE POLLED LIBERTY
LENAPE PRIDE

MINE GOLD MEDAL 436G
EAFFPOLLED GOLDEN GAL510N
NP POLLED SMOKIN GAL

STZZ POLLED YUKON 50E
MCM REBECCA MEB 29U
MH CHIEF HONCHO
LENAPE LITTLE LADY
SOGF SPECIAL K 247B
MLC WRANGLER QUEEN 337C
GUNSMOKE
LAURA'S GUESS

Consigned by: Glendenning J Bar J

Open

LOT 128A - J BAR J WORKING MAN 9251W • Polled, Red

Fullblood Bull Calf by Denison Polled Pub. Born 09/13/09.

EPD's: CED: 12, BW: 1.4, WW: 37, YW: 69, MA: 19, CEM: 4, SC: -0.1

EAFF Polled Gayle 665R is the homozygous polled female by Liberty and EAFF Polled Golden Gal 510N. She is the dam of J Bar J Talk It Up, the high selling lot at the 2009 American Pie Sale. A possibly homozygous polled bull calf is at side by Denison Polled Pub. This is one of the foundation fullblood females at the Glendenning J Bar J program.



FULLBLOOD • FEMALE • DOUBLE POLLED • RED

BEMS Miss Pretty Lady

BW: 85 • ADJ WW: 652

04/02/07 • BEMS 142T • NFF-1899974

CED	BW	WW	YW	MA	CEM	SC	DOC	ST	CW	RE	YG	MR	\$M
5	2.4	42	75	25	3	-0.1	10	N/A	N/A	N/A	N/A	N/A	N/A

STZZ POLLED YUKON 50E
BBCL POLLED DUDE N04J
TEXS STAR LUVING

STZZ POLLED YUKON 50E
BEMS MISS DAWN
BEMS HIGH COUNTRY DAWN

YKCC TOP LINE 180X
MASH WHISPER
TEXS RANGER EL PRESIDENTE
TEXS STAR LUV
YKCC TOP LINE 180X
MASH WHISPER
BEMS HIGH COUNTRY STORM
ALEES PRIMO

Consigned by: Moore Limousin Farms

AI 12/30/08 to EAFF Polled Hummer 530 (Safe)

BEMS Miss Pretty is a beautiful double polled fullblood female, ad she is a double-bred daughter of STZZ Polled Yukon. She sells bred to EAFF Polled Hummer and should calve before the sale date.



FULLBLOOD • FEMALE • HORNED • RED

AUTO Good Tide 283P

BW: 70 • ADJ WW: 538 • ADJ YW: 782

11/02/04 • AUTO 283P • NFF-1789020

CED	BW	WW	YW	MA	CEM	SC	DOC	ST	CW	RE	YG	MR	\$M
4	3.2	51	81	23	0	0.4	11	N/A	8	0.71	-0.32	-0.07	45

STBR KIPPER 639K
COJR HIGH TIDE 236M
STBR LILITH 208G

HARVEST OLYMPUS
BYOU GOOD GOLLY MS OLY207
TEXS STAR GOLLY

SOGF TOTAL 600F
STBR LADY SHOWTIME 341H
URANUS
STBR WENDY'S PUNCHETTE
WINTERSHALL JUPITER
LABORIEUSE
COLORADO 150
TEXS STAR GABRIELLA

Consigned by: Pinegar Limousin

Will calve before sale day to AUTO Cliff Hanger

This daughter of COJR High Tide is rich in fullblood bloodlines that trace to TEXS Star Golly, as do several of the good females in the Pinegar program. COJR High Tide has performed well in matings with several different cow families. Her Cliff Hanger calf will add significance to this fullblood lot.



Lot
132

FULLBLOOD • FEMALE • HORNED • RED

Lot
132

AUTO Harvest Luv 235P

03/23/04 • AUTO 235P • NFF-1763098

BW: 74 • ADJ WW: 527 • ADJ YW: 772

CED	BW	WW	YW	MA	CEM	SC	DOC	ST	CW	RE	YG	MR	\$M
-4	6.2	57	92	28	-1	0.4	-4	20	16	0.87	-0.34	-0.10	46

WINTERSHALL JUPITER	FLEURI
HARVEST OLYMPUS	FAIENCE
LABORIEUSE	FLAMBEAU
	FABIOLA (INITIAL ENTRY)
ORION	HARVEST OLYMPUS
SOGF MS ORION 104A	GOLDENVIEW LADY GVC 233K
MASH UNETTE	NET PROFIT
	WRC DEBONNAIRE

Consigned by: Pinegar Limousin

Will calve before sale day to AUTO Cliff Hanger

Exceptional growth and performance is evident in this high performing lot. The daughter of Harvest Olympus is from one of the old time pedigrees of maternal strength and breeding consistency. AUTO Cliff Hanger mated to daughter of Harvest Olympus into a golden cross. The resulting progeny have been phenomenal.

Lot
133

FULLBLOOD • FEMALE • POLLED • RED

AUTO Petula 468P

03/03/04 • AUTO 468P • NFF-1755647

BW: 74 • ADJ WW: 534 • ADJ YW: 706

CED	BW	WW	YW	MA	CEM	SC	DOC	ST	CW	RE	YG	MR	\$M
7	2.7	34	61	34	1	-0.1	N/A	N/A	2	0.38	-0.19	-0.15	36

SOGF SPECIAL K 247B	GOLDENVIEWKRUGERRAND 250K
AUTO BACK TO FUTURE 167L	SOGF LONESOME DOVE 832W
STBR B-P'S RANGERETTE	TEXS RANGER TED
	POPPY
WRC PUNCH	MIMOSA
FORL MISS PUNCH 90A	LEILA
FORL 90X	SEVEN FORTY SEVEN
	LL SWEET KRISTY 301R

Consigned by: Pinegar Limousin

Will calve before sale day to AUTO Cliff Hanger

AUTO Petula 468P is from the original FORL Miss Punch 90A, the longest member of the Pinegar cow herd. A maternal sister sells in the offering and this female will calve before sale day to AUTO Cliff Hanger.

Lot
134

FULLBLOOD • FEMALE • HORNED • RED

AUTO Pascale 482P

03/28/04 • AUTO 482P • NFF-1761912

BW: 74 • ADJ WW: 504 • ADJ YW: 641

CED	BW	WW	YW	MA	CEM	SC	DOC	ST	CW	RE	YG	MR	\$M
2	4.2	44	73	23	-4	0.1	14	14	-1	0.30	-0.17	-0.10	41

GOLDENVIEWKRUGERRAND 250K	K & D BEAU FRANCO KDS 3F
SOGF SPECIAL K 247B	IGUANE
SOGF LONESOME DOVE 832W	SPECIAL EDITION
	SOGF UNCLOUDED 68U
TEXS RANGER PRIMO	TEXS RANGER EL PRESIDENTE
LAURA'S OPIUM	TEXS STAR LUV
KKCC DOLL TOOTSIE	ORION
	JITPK TOOTSIE

Consigned by: Pinegar Limousin

Breeding Information:

Footnotes Will calve before sale day to AUTO Moonshine 555S

One of the most noted females and family lines is that of Laura's Opinion. The females that have been born from this female excel in quality, udder attachment and performance. This daughter of SOGF Special K is no exception.

Lot
135

FULLBLOOD • FEMALE • HORNED • RED

Trifecta's Lacy

06/07/03 • OLAR 008N • NFF-1793027

BW: 74 • ADJ WW: 506 • ADJ YW: 863

CED	BW	WW	YW	MA	CEM	SC	DOC	ST	CW	RE	YG	MR	\$M
8	3.3	47	76	22	5	-0.4	5	N/A	N/A	N/A	N/A	N/A	N/A

SOGF SPECIAL K 247B	GOLDENVIEWKRUGERRAND 250K
D'HANIS TRIFECTA 129K	SOGF LONESOME DOVE 832W
SLF HELEN 801H	MH VELOCITY
	MH NORTH DALLAS
URANUS	RAGONDIN
HL LACEY	OCEANIE
TEXS STAR DIANA	TEXS RANGER EL PRESIDENTE
	TEXS STAR DOLORES

Consigned by: Ollar Limousin

8 months safe to EAFF Polled Pugalist 633R

This Trifecta daughter traces to TEXS Star Diana, certainly one of the great producers. She will have a polled calf shortly after the sale.

Lot
136

FULLBLOOD • FEMALE • HORNED • RED

Sweet Success

12/04/03 • OLAR 20N • NFF-1756455

BW: 70

CED	BW	WW	YW	MA	CEM	SC	DOC	ST	CW	RE	YG	MR	\$M
8	3.4	40	68	24	3	-0.3	0	N/A	N/A	N/A	N/A	N/A	N/A

SOGF SPECIAL K 247B	GOLDENVIEWKRUGERRAND 250K
D'HANIS TRIFECTA 129K	SOGF LONESOME DOVE 832W
SLF HELEN 801H	MH VELOCITY
	MH NORTH DALLAS
TEXS RANGER TED	M M STRETCH
WCRL HATTIE 11D	TEXS STAR DOLORES
HONEY GIRL	WRC PUNCH
	DEUX AMIS HONEY

Consigned by: Ollar Limousin

8 Months safe to EAFF Polled Pugalist

Both she and one daughter remain in the Ollar breeding program. She represents one of the best milking and fertile cow families.

The Cattle Drive

Lot
137

FULLBLOOD • FEMALE • POLLED • RED

Miss Fan Fan 17U

BW: 69

02/05/08 • FNGC 17U • NFF-1909145

CED	BW	WW	YW	MA	CEM	SC	DOC	ST	CW	RE	YG	MR	\$M
7	4.1	48	83	23	0	0.4	N/A	N/A	N/A	N/A	N/A	N/A	N/A

FANFAN
BELL'S FANFAN 286
EAFF GOLDEN BELL 241J

MH VELOCITY
HDVR VELOCITY 440P
CHBI CUBAN QUEEN 315H

TARVIS
DUCHESS
MINE GOLD MEDAL 436G
EAFF 153G
TEXS RANGER PRIMO
HI CTRY POLL WONDER DJMW5
SOGF SPECIAL K 247B
OAKM LADY ALIEEN 953C

Consigned by: Fisher Limousin Farm

PE 2/10/09-9/18/09 to EAFF Polled Platinum (8 ½ months Safe)
Miss Fan Fan 17U is rich in outcross blood. The high performing and big milk numbered female is an excellent replacement female. She calves to the sire of EAFF Polled Platinum.

Lot
139

FULLBLOOD • FEMALE • HORNED • RED

Muscateles Lady 894

BW: 74 • ADJ WW: 664

03/01/08 • FNGC 894U • NFF-1920403

CED	BW	WW	YW	MA	CEM	SC	DOC	ST	CW	RE	YG	MR	\$M
5	4.0	47	79	20	0	0.0	N/A	N/A	N/A	N/A	N/A	N/A	N/A

EAFF MEDALLION 462M
EAFF POLLED MUSCATEL 659R
SOGF AMBER KRUG 264B

BKLR'S RUN 116C
BLUEBANK HEATHER
MM LADY HANCHON

EAFF MR MEDALIST 252J
EAFF HAIDEE 098F
GOLDENVIEWKRUGERRAND 250K
EJPS AMBER
WRC PUNCH
BPBP DERBY DOLL 01P
2 HANCHON AV HAGADAL
WSL MISS CARNAVAL 453L

Consigned by: Fisher Limousin Farm

PE 2/10/09-9/18/09 to EAFF Polled Platinum (7 ½ months Safe)
Muscateles Lady is by the good breeding son of EAFF Medallion 462M. She is rich in dependable performance blood on the maternal side. EAFF Polled Platinum adds quality and performance to the pedigree.

Lot
141

FULLBLOOD • FEMALE • POLLED • RED

Miss Polled Pub 670

BW: 70 • ADJ WW: 711 • ADJ YW: 1234

04/15/06 • FNGC 670S • NFF-1840575

CED	BW	WW	YW	MA	CEM	SC	DOC	ST	CW	RE	YG	MR	\$M
8	1.6	45	80	26	-3	0.1	7	15	3	0.57	-0.27	-0.06	43

SOGF SPECIAL K 247B
MINE GOLD MEDAL 436G
MLC WRANGLER QUEEN 337C

PUB
EAFF AMBER PRINCESS 494N
SOGF AMBER KRUG 264B

GOLDENVIEWKRUGERRAND 250K
SOGF LONESOME DOVE 832W
MH HIGH COUNTRY WRANGLER
STEP JOLIE 521X
MIMOSA
JIGUE
GOLDENVIEWKRUGERRAND 250K
EJPS AMBER

Consigned by: Fisher Limousin Farm

PE 4/30/09-9/28/09 to EAFF Polled Platinum (3 months Safe)
Miss Polled Pub is a granddaughter of SOGF Amber Krug 264B, one of the greatest fullblood cows to ever live. Her influence has made a great impact upon the industry. Miss Polled Pub 670 carries forth the consistency known in the pedigree.

Lot
138

FULLBLOOD • FEMALE • POLLED • RED

Muscateles Lady 892

BW: 70 • ADJ WW: 629

03/04/08 • FNGC 892U • NFF-1920402

CED	BW	WW	YW	MA	CEM	SC	DOC	ST	CW	RE	YG	MR	\$M
7	3.6	46	79	21	-1	0.1	6	N/A	12	0.69	-0.25	-0.10	42

EAFF MEDALLION 462M
EAFF POLLED MUSCATEL 659R
SOGF AMBER KRUG 264B

PUB
EAFF GRACES PEONY 466M
WOFA MISS GRACE 459Y

EAFF MR MEDALIST 252J
EAFF HAIDEE 098F
GOLDENVIEWKRUGERRAND 250K
EJPS AMBER
MIMOSA
JIGUE
HARVEST OLYMPUS
TEXS STAR GRACIE

Consigned by: Fisher Limousin Farm

PE 2/10/09-9/18/09 to EAFF Polled Platinum (6 months Safe)
This high performance female comes from the top replacement pen at Fisher Limousin. She is rich in the top performance fullblood lines in the industry. This polled female will be a valuable asset for years to come.

Lot
140

FULLBLOOD • FEMALE • POLLED • RED

Miss Musketel 52U

BW: 74

02/27/08 • FNGC 52U • NFF-1909147

CED	BW	WW	YW	MA	CEM	SC	DOC	ST	CW	RE	YG	MR	\$M
0	5.2	62	99	22	-5	0.5	-3	N/A	25	0.74	-0.21	-0.12	46

EAFF MEDALLION 462M
EAFF POLLED MUSCATEL 659R
SOGF AMBER KRUG 264B

EAFF REJUVENATOR 260J
EAFF MEDALLION RAVE 675R
EAFF RAVISHING 439M

EAFF MR MEDALIST 252J
EAFF HAIDEE 098F
GOLDENVIEWKRUGERRAND 250K
EJPS AMBER
HARVEST OLYMPUS
SOGF AMBER KRUG 264B
EAFF REJUVENATOR 260J
SOGF ORION DOVE 398C

Consigned by: Fisher Limousin Farm

PE 4/30/09-9/28/09 to EAFF Polled Platinum (3 months Safe)
Certainly, this female has one of the strongest performance pedigrees in the fullblood offering. She carries back to some of the most dependable lines in the industry.

Lot
142

FULLBLOOD • FEMALE • POLLED • RED

Miss Gold Medal 685

BW: 74 • ADJ WW: 682 • ADJ YW: 1209

05/08/06 • FNGC 685S • NFF-1840581

CED	BW	WW	YW	MA	CEM	SC	DOC	ST	CW	RE	YG	MR	\$M
8	1.6	45	80	26	-3	0.1	7	15	3	0.57	-0.27	-0.06	43

SOGF SPECIAL K 247B
MINE GOLD MEDAL 436G
MLC WRANGLER QUEEN 337C

EAFF REJUVENATOR 260J
EDGE MONT ANGELICA 238M
EDGE EXCUSE 647H

GOLDENVIEWKRUGERRAND 250K
SOGF LONESOME DOVE 832W
MH HIGH COUNTRY WRANGLER
STEP JOLIE 521X
HARVEST OLYMPUS
SOGF AMBER KRUG 264B
SOGF SPECIAL K 247B
MASH XCUSE

Consigned by: Fisher Limousin Farm

PE 4/30/09-9/28/09 to EAFF Polled Platinum (5 months Safe)
Miss Gold Medal 685 is from some of the highest performing bloodlines in the industry. She goes back to the famous EDGE Excuse family that has been a big contributor to the growth and maternal superiority in the breed.

Lot 143
Platinums Lady 15U
 05/16/08 • FNGC 15U • NFF-1915160

BW: 58 • ADJ WW: 793

CED	BW	WW	YW	MA	CEM	SC	DOC	ST	CW	RE	YG	MR	SM
9	1.9	45	80	21	3	0.2	1	N/A	N/A	N/A	N/A	N/A	N/A

MINE GOLD MEDAL 436G
 EAFF POLLED PLATINUM 515N
 NP POLLED SMOKIN GAL

SOGF SPECIAL K 247B
 MLC WRANGLER QUEEN 337C
 GUNSMOKE
 LAURA'S GUESS
 OAKM OUR SECRET AGENT 37D
 RSKY CAROLINE 119C
 LANCASTER 43B
 MISS RADIAL 111B

Consigned by: Fisher Limousin Farm

PE 4/30/09-9/25/09 BEMS Yukon (3 months Safe)
 This young daughter of EAFF Polled Platinum 515N carries the service of the homozygous polled BEMS Yukon, a member of the bull battery at Fisher Limousin.



Second to None Ref



SVL Polled Profit Ref



OAKM Lord Krug 30L Ref

Lot 144
Ms Star Point 160S
 04/30/06 • PRFR 160S • NFF-1845616

BW: 87 • ADJ WW: 587

CED	BW	WW	YW	MA	CEM	SC	DOC	ST	CW	RE	YG	MR	SM
5	4.1	60	102	21	4	0.4	3	N/A	15	0.43	-0.13	-0.08	46

ORION
 DVFC FOCUS POINT
 SOGF AMBER KRUG 264B

MH VELOCITY
 SVL WILLOW 606J
 WILLOW CREEK PANSY

HARVEST OLYMPUS
 GOLDENVIEW LADY GVC 233K
 GOLDENVIEWKRUGERRAND 250K
 EJPS AMBER
 TEXS RANGER PRIMO
 HI CTRY POLL WONDER DJMW5
 MK UDELL
 MISS D&H 5X

Consigned by: Ratliff 3R Ranch

PE 4/20/09-9/1/09 to CF Proud Polled Prodigy 156T - Safe
 Star Point is sired by the great DVFC Focus Point (Orion x Amber Krug) and a super MH Velocity cow. She's moderately framed and is bred to a very impressive homozygous polled Fullblood son of Polled Harmonica. CF Proud Polled Prodigy, a true outcross. Due to calve in February with her second calf, the winning bidder will also be given their choice of 5 straws of semen from either SVL Polled Profit, Second To None DHAN, or OAKM Lord Krug 30L. The semen will be available at the sale.

Lot 145
Ms Willow Krug 162S
 08/16/06 • PRFR 162S • NFF-1845618

BW: 74 • ADJ WW: 677 • ADJ YW: 860

CED	BW	WW	YW	MA	CEM	SC	DOC	ST	CW	RE	YG	MR	SM
8	2.4	37	64	28	2	0.1	10	N/A	N/A	N/A	N/A	N/A	N/A

GOLDENVIEWKRUGERRAND 250K
 OAKM LORD KRUG 30L
 OAKM LADY PRIS LEA 564E

AUTO PLD FOUR-FIFTY-FOUR
 SVL MEMORY 518H
 WILLOW CREEK PAITI

K & D BEAU FRANCO KDS 3F
 IGUANE
 OAKM LORD LAFAYETTE 56C
 OAKM LADY PEGGY 808B
 MH VELOCITY
 STBR B-P'S RANGERETTE
 MK UDELL
 MISS D&H 47X

Consigned by: Ratliff 3R Ranch

PE 11/30/08-2/10/09 to CF Proud Polled Prodigy 156T
 PE 2/11/09-9/1/09 to Second To None DHAN (Safe)
 Willow Krug is a promising daughter of OAKM Lord Krug 30L, a tremendous son of Goldenview Krugerrand and a great Lafayette cow from the Oak Meadows program. Her dam is SVL Memory, Willow Krug sells bred to a very impressive homozygous polled Fullblood son of Polled Harmonica, CF Proud Polled Prodigy, a true outcross. She is due to calve around the first of November, the winning bidder will also be given their choice of 5 straws of semen from either SVL Polled Profit, Second To None DHAN, or OAKM Lord Krug 30L. The semen will be available at the sale.

Lot 146
Ms Special Krug 169T
 05/21/07 • PRFR 169T • NFF-1892716

BW: 79 • ADJ WW: 5926 • ADJ YW: 939

CED	BW	WW	YW	MA	CEM	SC	DOC	ST	CW	RE	YG	MR	SM
2	4.2	44	71	26	-5	-0.1	11	N/A	N/A	N/A	N/A	N/A	N/A

GOLDENVIEWKRUGERRAND 250K
 OAKM LORD KRUG 30L
 OAKM LADY PRIS LEA 564E

SOGF SPECIAL K 247B
 SOGF SPECIAL FAITH 015K
 WCRL FAITH 52C

K & D BEAU FRANCO KDS 3F
 IGUANE
 OAKM LORD LAFAYETTE 56C
 OAKM LADY PEGGY 808B
 GOLDENVIEWKRUGERRAND 250K
 SOGF LONESOME DOVE 832W
 TEXS RANGER PRIMO
 SSAM QB FANCY PASSER

Consigned by: Ratliff 3R Ranch

PE 2/28/09-9/1/09 Second To None DHAN (Safe)
 Special Krug is another promising daughter of OAKM Lord Krug 30L and her dam, Special Faith, is a truly exceptional Special K cow. She'll be moderately framed and loaded with maternal. A nicely balanced real world Fullblood with an impressive pedigree bred to the great Second To None DHAN. She will calve in January, the winning bidder will also be given their choice of 5 straws of semen from either SVL Polled Profit, Second To None DHAN, or OAKM Lord Krug 30L. The semen will be available at the sale.

The Cattle Drive

Lot 147 FULLBLOOD • FEMALE • POLLED • RED

Miss Musketel 50U
02/27/08 • FNGC 50U • NFF-1909146
BW: 70 • ADJ WW: 545

CED	BW	WW	YW	MA	CEM	SC	DOC	ST	CW	RE	YG	MR	\$M
2	4.8	53	88	24	-5	0.1	12	N/A	11	0.68	-0.27	-0.08	45

EAFF MR MEDALIST 252J
EAFF HAIDEE 098F
GOLDENVIEWKRUGERRAND 250K
EJPS AMBER
K & D BEAU FRANCO KDS 3F
IGUANE
HARVEST OLYMPUS
SPITZ IDEAL 822L

EAFF MEDALLION 462M
EAFF POLLED MUSCATEL 659R
SOGF AMBER KRUG 264B
GOLDENVIEWKRUGERRAND 250K
EAFF MARIGOLD 514N
STBR MARMALADE 340B

Consigned by: Fisher Limousin Farm

PE 4/30/09-9/28/09 to EAFF Polled Platinum (3 months Safe)
Some of the most proven genetics that were ever used in the Eastfield program are noted in the pedigree here. The high quality female will calve next spring as a two year old.

Lot 148 FULLBLOOD • FEMALE • HORNED • RED

Brush Precious 413P
04/16/04 • JBTR 413P • NFF-1777084

CED	BW	WW	YW	MA	CEM	SC	DOC	ST	CW	RE	YG	MR	\$M
5	3.0	56	90	23	-1	0.2	3	N/A	12	0.57	-0.24	-0.11	45

ORION
DVFC FOCUS POINT
SOGF AMBER KRUG 264B
SOGF SPECIAL K 247B
CVR GINGER 248G
CVR LUCY P 189 U

HARVEST OLYMPUS
GOLDENVIEW LADY GVC 233K
GOLDENVIEWKRUGERRAND 250K
EJPS AMBER
GOLDENVIEWKRUGERRAND 250K
SOGF LONESOME DOVE 832W
TEXS RANGER EL PRESIDENTE
CVR LUCINDA 113L

Consigned by: David Finney

AI 1/24/09 to 1 Way Extra Precision
PE 3/1/09-10/1/09 to Polled Tom
Brush Precious 413P is a tremendous daughter of DVFC Focus Point. She is from a well-bred Canadian Valley-bred daughter of SOGF Special K.

Lot 149 FULLBLOOD • FEMALE • HOMO POLLED • RED

Polled Destiny
10/26/05 • FNNY 073R • NFF-1825027
BW: 81

CED	BW	WW	YW	MA	CEM	SC	DOC	ST	CW	RE	YG	MR	\$M
7	1.4	38	64	25	-1	-0.1	8	N/A	2	0.46	-0.19	-0.10	39

HARVEST OLYMPUS
CYMBALINE EBY EBY 42C
STZZ POLLED YUKON 50E
VERBEEK'S ECLIPSE
GOLDENVIEWKRUGERRAND 250K
MLLE. SUSAN LYN
TEXS RANGER EL PRESIDENTE
KAKI TOPAZ 04T

1-WAY POLLED JUSTICE
1-WAY JUST MACHO
POLL YUKON GOLD
JPAT POWER STROKE 52D
JLSG HERO 1808G
CLMM POLLED AZZARA 06A

Consigned by: David Finney

PE 1/109-10/1/09 to Polled Tom
Polled Destiny is a homozygous polled female bred for another homozygous polled calf. The daughter of 1 Way Just Macho is bred from a very long line of quality polled fullblood individuals.

Lot 150 FULLBLOOD • FEMALE • HOMO POLLED • RED

Polled Janice
06/22/05 • FNNY 074R • NFF-1825028
BW: 84

CED	BW	WW	YW	MA	CEM	SC	DOC	ST	CW	RE	YG	MR	\$M
5	2.7	41	72	23	-1	0.1	2	N/A	7	0.51	-0.16	-0.12	39

1-WAY POLLED JUSTICE
1-WAY JUST MACHO
POLL YUKON GOLD
MR ABSOLUTE ENB 416A
GSLF POLLED PREMIUM 17J
PRIME'S MS. OLYMPIA

HARVEST OLYMPUS
CYMBALINE EBY EBY 42C
STZZ POLLED YUKON 50E
VERBEEK'S ECLIPSE
KERR'S LONG RANGER KUU 1W
ENB'S TESSA ENB 416S
OAKM LORD OLYMPIAD 05B
EAFF PRIME PUNCH

Consigned by: David Finney

PE 1/1/09-10/1/09 to Polled Tom
Polled Janice is a homozygous polled female from the very best of Canadian and US bloodlines. She is virtually and outcross to most popular fullblood lines.

Lot 151 FULLBLOOD • FEMALE • DOUBLE POLLED • RED

Cecelia
04/05/04 • FNNY 332P • NFF-1807743
BW: 83

CED	BW	WW	YW	MA	CEM	SC	DOC	ST	CW	RE	YG	MR	\$M
5	3.2	32	56	17	-1	-0.2	N/A	8	N/A	N/A	N/A	N/A	N/A

BUTCH YAY 28B
CYMBALINE EBY EBY 42C
OAKM LORD OLYMPIAD 05B
EAFF PRIME PUNCH
GOLDENVIEWKRUGERRAND 250K
MLLE. SUSAN LYN
TEXS RANGER EL PRESIDENTE
KAKI TOPAZ 04T

POLLED FUTURE ZPF 1F
GSLF POLLED NEPTUNE 07H
PRIME'S MS. OLYMPIA
JPAT POWER STROKE 52D
JLSG HERO 1808G
CLMM POLLED AZZARA 06A

Consigned by: David Finney

AI 1/23/09 to Louxor
PE 3/1/09-10/1/09 to Polled Tom
Cecelia is rich in outcross blood of the polled trait. She is from the good herd of David Finney's that is packed with outcross fullblood genetics.

Lot 152 FULLBLOOD • FEMALE • HORNED • RED

Trifecta's Orianna
07/24/04 • OLAR 012P • NFF-1793028
BW: 67 • ADJ WW: 496

CED	BW	WW	YW	MA	CEM	SC	DOC	ST	CW	RE	YG	MR	\$M
4	3.7	47	78	27	3	0.3	6	N/A	N/A	N/A	N/A	N/A	N/A

SOGF SPECIAL K 247B
D'HANIS TRIFECTA 129K
SLF HELEN 801H
ORION
BHLC ORIANNA 405D
VRCC MEREDITH 834W

GOLDENVIEWKRUGERRAND 250K
SOGF LONESOME DOVE 832W
MH VELOCITY
MH NORTH DALLAS
HARVEST OLYMPUS
GOLDENVIEW LADY GVC 233K
MR MK CAPTAIN IN COMMAND
CANFIELD ULTRASONIC

Consigned by: Ollar Limousin

5 months safe to Double Dutch
A daughter of EAFF Polled Pugalist 633R remains in the herd. 012P is a solidly good producing cow with a nice milking number.

C.O.D.Y. PROGRAM

Creating the Opportunity for the
Development of Youth - Lots C1 - C17



C1



C3

The CODY participants had a great summer showing at local fairs, the Ozark Empire Fair, Missouri State Fair, Missouri Field Day and Memphis Fair. This is the great group of kids and donors with calves being donated to 17 kids, for them to show this summer. Please join us on October 17, 2009 at 3:00 pm for the final CODY show and see who will be selected as our 2009 CODY Champion.

Lot
C2

PUREBRED • FEMALE • DOUBLE POLLED • BLACK

M&R Nasa's Weapon 278U

BW: 66 • ADJ WW: 668

05/07/08 • MIDL 278U • NPF-1902626

CED	BW	WW	YW	MA	CEM	SC	DOC	ST	CW	RE	YG	MR	\$M
8	1.3	58	99	31	7	0.7	16	N/A	28	0.50	-0.06	0.02	49

IVLS TOP CRITERIA 8862P
IVLS WEAPON HUNT 8860S
IVLS8860M

WULFS NASA 1212N
BOHI SOFFY 6141S
JCL MARY JANE

COLE WOLF HUNT
IVLS8862M
IVLS SECRET WEAPON 4408K
IVLS MS STABILIZER 2860F
WULFS FANFARE 4055F
MISS WULFETTE 1212L
EXLR DAKOTA 353G
GPFF PREFERENCE

Consigned by: Connor Sims • Donated By: M&R Limousin

3 Times Class Winner
Reserve Grand Champion-Dallas and Laclede County Fair

Lot
C4

PUREBRED • FEMALE • DOUBLE POLLED • RED

Berry Hills Robin

BW: 70

07/04/08 • BYHL 212U • NPF-1907052

CED	BW	WW	YW	MA	CEM	SC	DOC	ST	CW	RE	YG	MR	\$M
13	-1.7	33	71	29	8	0.3	21	N/A	13	0.52	-0.09	-0.03	40

WULFS GUARDIAN 5074G
BERRY HILLS GARRETT
QUAIL RUN BLACK MOLLY BP

SDGL 3RD ROCK 122L
BERRY HILLS RED ROBIN
MOORES 212L

WULFS RAMBLER 8400X
WULFS EXAMPLE 5074E
GSAC BLACK HORIZON 325
LKCC 234Y
OAKM LORD JUPITER 26D
COSG HIGH STYLE 145F
BLC POLL ROYALTY 184F
WCRL FAWN 56C

Consigned by: Ryan Coleman • Donated By: Berry Hill Farms

Grand Champion Bull Wright County and Tri-County Fairs

C.O.D.Y Program

Thanks to the generous donors and
sponsors who make the C.O.D.Y.
program successful!

MFA, Purdy Farm Center,
& Commerce Bank

Lot
C1

PUREBRED • FEMALE • POLLED • DOUBLE BLACK

J Bar J Unique 803U

BW: 68

03/02/08 • GLDL 803U • NPF-1906289

CED	BW	WW	YW	MA	CEM	SC	DOC	ST	CW	RE	YG	MR	\$M
9	2.6	48	89	16	5	0.6	8	N/A	32	0.67	-0.07	-0.04	44

GPFF BLAQUE RULON
CARROUSELS PURE POWER
TUBB FIRST CLASS 666F

DJ GENTLEMAN IN BLACK
MAGS NEMATOLEPIS
CANE RIDGE HILDA 875C

BLACK DIAMOND
QUAIL RUN RAMONA BP
WULFS RAMBLER 8400X
TUBB MISS P UPDATE 089Y
COLE FIRST DOWN 46D
DJ ESSENCE
WULFS RAMBLER 8400X
YKCC MISS IRONSIDE 197NS

Consigned by: Kayla Maydew • Donated By: Marso Limousin

Lot
C3

PUREBRED • FEMALE • HOMO POLLED • DOUBLE BLACK

HBRL 820U

BW: 63 • ADJ WW: 645

05/14/08 • HBRL 820U • NPF-1909090

CED	BW	WW	YW	MA	CEM	SC	DOC	ST	CW	RE	YG	MR	\$M
8	1.5	52	94	26	5	0.8	N/A	N/A	N/A	N/A	N/A	N/A	N/A

GPFF BLAQUE RULON
NICO POLLED THUNDER
NICO DESIRAE

IVLS SECRET WEAPON 4408K
AUTO SECRET DAWN 836R
AUTO DAWN 273K

BLACK DIAMOND
QUAIL RUN RAMONA BP
COLE FIRST DOWN 46D
NICO POLLED PORSHA
IVLS FARMER 4G
IVLS 408H
WULFS DAWSON 4421D
CANE RIDGE CASSIE 352D

Consigned by: Dylon Mathews • Donated By: Buckridge Limousin

AI 8/28/09 MTTY In Focus

Lot
C5

FULLBLOOD • FEMALE • POLLED • RED

RSTA Daisy Mae

BW: 68

07/20/08 • RSTA 219U • NFF-1909025

CED	BW	WW	YW	MA	CEM	SC	DOC	ST	CW	RE	YG	MR	\$M
5	2.5	38	67	20	3	-0.1	N/A	N/A	-3	0.36	-0.15	-0.08	40

DYFRI GRANDPRIX
JWJ GATSBY
CCPV POLLED HONEY BEA

CWP HARVEST LUV
HLFL CHELSEA 325C
MARSHALL'S COURTNEY

RAKE DENVER
VAGABONDE
AUTO-MATT-IC 1112F
CLZJ HONEY 238F
HARVEST OLYMPUS
TEXS STAR LUV
BLR THUNDER 941P
DUBL SHARON L09U

Consigned by: Jacob Johnson • Donated By: JWJ Ltd. Farms

Reserve Grand Champion
Ozark Empire Fair FFA Show

C.O.D.Y Program

Lot C6 PUREBRED • FEMALE • DOUBLE POLLED

Lady in Red

RED • 08/13/08 • PLSH 85U • NPF-1917879

BW: 72

CED	BW	WW	YW	MA	CEM	SC	DOC	ST	CW	RE	YG	MR	\$M
9	0.2	36	72	18	9	0.1	20	N/A	N/A	N/A	N/A	N/A	N/A

WULFS GUARDIAN 5074G
DVFC ARROWHEAD 1004J
SIVL SABLE COOKIE 381E

WULFS RAMBLER 8400X
WULFS EXAMPLE 5074E
WULFS QUARTERBACK 4222B
EAFM COOKIE
WULFS GUARDIAN 5074G
QUAIL RUN BLACK MOLLY BP
ANDERS JAG
JPLC GALANA

BERRY HILLS GARRETT
MUDG FAIR ANNE
FAIR HAVEN AMANDA

Consigned by: Kurtis Corneilson • Donated By: Berry Hill Farms

Lot C7 PUREBRED • FEMALE • HORNED • BLACK

JWJ 847U

08/30/08 • JWJD 847U • NPF-1929332

BW: 80

CED	BW	WW	YW	MA	CEM	SC	DOC	ST	CW	RE	YG	MR	\$M
6	2.0	42	76	23	-1	0.3	9	N/A	N/A	N/A	N/A	N/A	N/A

CARROUSELS PURE POWER
HB SAGE BRUSH 678S
MBJR 747M

SOGF SPECIAL K 247B
AUTO ECHELON 811P
LAURA'S ECHELON

GPFF BLAQUE RULON
TUBB FIRST CLASS 666F
COLE WULF HUNT
FLYING E CAMRYN GLER 39J
GOLDENVIEWKRUGERRAND 250K
SOGF LONESOME DOVE 832W
WRC PUNCH
SOULES QUEEN 103X

Consigned by: Chris Ibarra • Donated By: JWJ Ltd. Farms

Lot C8 PUREBRED • FEMALE • HOMO POLLED • HOMO BLACK

Little's Timely 56U

09/01/08 • RCLL 56U • NPF-1929738

BW: 74 • ADJ WW: 627

CED	BW	WW	YW	MA	CEM	SC	DOC	ST	CW	RE	YG	MR	\$M
5	2.3	55	95	18	1	0.2	19	N/A	N/A	N/A	N/A	N/A	N/A

GPFF BLAQUE RULON
KRVN RIGHT TIME 168R
LFL LACY 1007L

WULFS GUARDIAN 5074G
TRTF SATIN KALA 315M
LOGAN'S KALA 315K

BLACK DIAMOND
QUAIL RUN RAMONA BP
MINE POLLED DRYDOCK 004H
ALAW ELIZABETH 21E
WULFS RAMBLER 8400X
WULFS EXAMPLE 5074E
MOSR MAGIC PUNCH 50E
QUAIL RUN 143H

Consigned by: Tanner Vaughn • Donated By: Rick & Susan Little

3 Times Class Winner

Lot C9 LIM-FLEX(50) • FEMALE • DOUBLE POLLED • DOUBLE BLACK

BBPB Jaymin 23U

09/01/08 • BBPB 23U • LFF-1930337

BW: 78 • ADJ WW: 712

CED	BW	WW	YW	MA	CEM	SC	DOC	ST	CW	RE	YG	MR	\$M
5	1.4	44	86	26	3	N/A	N/A	N/A	15	-0.30	0.18	0.10	45

TC MOONSHINE 001
RR MOONSHINE 2211
EXAR DIXIE ERICA 0456

CHAZ FIRST CHOICE 6004F
CBLR JAYMIN 366J
CBLR MAGDALENA 251D

CONNEALY FOREFRONT
TC MOONSHINE 7002
D H D TRAVELER 6807
DIXIE ERICA OF R R 7530
COLE FIRST DOWN 46D
CHAZ MISS ROXANNE 92C
EPIC ACE
CEDAR HILL MAGGIE 0504T

Consigned by: Sarah Deshazer • Donated By: Brent Boyce

Lot C10 FULLBLOOD • FEMALE • POLLED • RED

JWJ 846U

09/01/08 • JWJD 846U • NPF-1929331

BW: 82 • ADJ WW: 483

CED	BW	WW	YW	MA	CEM	SC	DOC	ST	CW	RE	YG	MR	\$M
5	4.1	50	82	16	3	-0.1	N/A	N/A	23	0.61	-0.18	-0.07	44

RPER POLLED MAGELLAN 189M
ENGD 360S
LENAPE APHID

OAKF CIMMERON 0327Y
OAKM LADY MEADE 527E
OAKM MINOI 737Y

EAFM MR MEDALIST 252J
OAKM LADY LOUANNE 886B
LENAPE WASATCH
QUAIL RUN LADYBUG
TEXS RANGER PRIMO
GOLDENVIEW FOURPENNY GVC
HARVEST OLYMPUS
TEXS STAR MUSIC

Consigned by: Trystana Acheson • Donated By: JWJ Ltd Farms

Lot C11 LIM-FLEX(50) • FEMALE • DOUBLE POLLED • RED

JALH Ms Norseman 811

09/02/08 • JALH 811U • LFF-1930217

BW: 82 • ADJ WW: 592

CED	BW	WW	YW	MA	CEM	SC	DOC	ST	CW	RE	YG	MR	\$M
4	0.3	36	76	29	0	N/A	18	N/A	N/A	N/A	N/A	N/A	N/A

VGW KING OF THE WEST
5L NORSEMAN KING 2291
NORSEMAN 1312 PJM

JCL BLACK OUT
JIREH'S LADY LUCK
GRJL MS PROG 154E

LKCC TOMAHAWKS TOUCHDOWN
JCL MADELINE
WULF'S POLLED PROGRESS
BAR S HAWKEYE 154T

Consigned by: Kaleb Linder • Donated By: Jirah Acres

Reserve Grand Champion Female
Lawrence County Fair

Lot C12 FULLBLOOD • FEMALE • POLLED • RED

JWJ 859U

09/19/08 • JWJD 859U • NFF-1929333

BW: 83 • ADJ WW: 362

CED	BW	WW	YW	MA	CEM	SC	DOC	ST	CW	RE	YG	MR	\$M
3	3.6	42	74	20	0	0.1	N/A	N/A	23	0.74	-0.25	-0.08	42

RPER POLLED MAGELLAN 189M
ENG D 360S
LENAPE APHID

HARVEST OLYMPUS
D'HANIS JAZMINE 622N
SOGF SPECIAL GINA 638F

EAFF MR MEDALIST 252J
OAKM LADY LOUANNE 886B
LENAPE WASATCH
QUAIL RUN LADYBUG
WINTERSHALL JUPITER
LABORIEUSE
SOGF SPECIAL K 247B
SOGF VIRGINA 74V

Consigned by: Josh Spencer • Donated By: JWJ Ltd Farms

Lot C13 FULLBLOOD • FEMALE • DOUBLE POLLED • RED

JWJ 865U

10/11/08 • JWJD 865U • NFF-1929334

BW: 81 • ADJ WW: 456

CED	BW	WW	YW	MA	CEM	SC	DOC	ST	CW	RE	YG	MR	\$M
9	2.0	43	72	18	7	-0.1	N/A	N/A	16	0.69	-0.26	-0.03	44

RPER POLLED MAGELLAN 189M
ENG D 360S
LENAPE APHID

GALILEO
GSLF POLLED GALI 24J
HI COUNTRY DESIGNERJ23E

EAFF MR MEDALIST 252J
OAKM LADY LOUANNE 886B
LENAPE WASATCH
QUAIL RUN LADYBUG
URON
SENRORITA
HI COUNTRY CHALLENGER
HI COUNTRY JMD 83Z

Consigned by: Chase Sneed • Donated By: JWJ Ltd. Farms

Lot C14 PUREBRED • BULL • DOUBLE POLLED • RED

Red Arrow

08/07/08 • PLSH 08U • NPM-1917878

BW: 64

CED	BW	WW	YW	MA	CEM	SC	DOC	ST	CW	RE	YG	MR	\$M
11	0.4	37	75	20	6	0.3	26	16	20	0.86	-0.17	-0.22	35

WULFS GUARDIAN 5074G
DVFC ARROWHEAD 1004J
SIVL SABLE COOKIE 381E

WULFS KEYSTONE 7522K
RE
M&R EBONY 08L

WULFS RAMBLER 8400X
WULFS EXAMPLE 5074E
WULFS QUARTERBACK 4222B
EAFM COOKIE
WULFS GAGE 5158G
WULFS GIN GIN 7522G
WULFS DAWSON 4421D
M & R DEBRA 306D

Consigned by: Dyland McClanahan • Donated By: Berry Hill Farms

Grand Champion Bull-Laclede County Fair

Lot C15 FULLBLOOD • BULL • DOUBLE POLLED • RED

CDJL Medal Matt 960U

08/12/08 • CDJL 960U • NFM-1919178

BW: 80 • ADJ WW: 612

CED	BW	WW	YW	MA	CEM	SC	DOC	ST	CW	RE	YG	MR	\$M
8	2.5	33	66	12	3	-0.3	13	13	8	0.37	-0.11	-0.06	39

MINE GOLD MEDAL 436G
EAFF MR MEDALIST 252J
OAKF SIENNA 9814X

AUTO-MATT-IC 1112F
CDJL RANGERETTE 156N
JJSR COLORADO MINNIE

SOGF SPECIAL K 247B
MLC WRANGLER QUEEN 337C
TEXS RANGER PRIMO
OAKF SIENNA
GUNSMOKE
MH HIGH COTTON
TEXS RANGER 06Y
ANTH BJ MINT

Consigned by: Kyla Linder • Donated By: Crocket T Rose Branch

Reserve Grand Champion Bull
National Junior Show
Grand Champion Bull Ozark Empire Fair
Division Champion Missouri State Fair

Lot C16 PUREBRED • BULL • HORNED • RED

Reba's Fruity Punch 552U

09/16/08 • TMD F 552U • NPM-1934056

BW: 72 • ADJ WW: 662

CED	BW	WW	YW	MA	CEM	SC	DOC	ST	CW	RE	YG	MR	\$M
6	4.0	42	73	22	7	N/A	N/A	N/A	N/A	N/A	N/A	N/A	N/A

JWJ 4032
BL PLD ORION-PUNCH 493S
LAURA'S FEATURE

MDRC TUBB LUCKY STRIKE
LGLM REBA 552R
LGLM NAN 360N

EAFF PERRY 321L
CCPV LADY BREANNA
ORION
LAURA'S TED BABY
TUBB GRINDER 749D
EXLR 120J
LGLM DIVIDEN 147L
LGLM JENNIFER

Consigned by: Kolby Zouck • Donated By: Doehring Limousin

Grand Champion Bull Dallas County Fair
Reserve Grand Champion Bull Polk and Laclede County Fair

Lot C17 PUREBRED • BULL • SCURRED • RED

RADA Union Jack 155U

09/23/08 • RADA 155U • NPM-1930046

BW: 72 • ADJ WW: 576

CED	BW	WW	YW	MA	CEM	SC	DOC	ST	CW	RE	YG	MR	\$M
13	-1.7	33	71	29	8	0.3	21	N/A	13	0.52	-0.09	-0.03	40

WULFS NASA 1212N
WULFS RANSOM 3059R
WULFS NOBILITY 3059N

WWLS GUNNER 52G
MINE SISSY 9041J
MINE PLD MEMORIES 401G

WULFS FANFARE 4055F
MISS WULFETTE 1212L
COLE WULF HUNT
WULFS KLARICE 0095K
FRONT LINER 38C
WWLS BETSY 52B
SF POLLED RIDGEWAY 61C
MBLB HARVEST LADY 207C

Consigned by: Hannah Michitisch • Donated By: Hilltop Farms

KEITH KISSEE



**KK SEEDSTOCK CONSULTANTS
SPECIALIZED SALES**

2300 Monument Ave., Richmond, VA 23220
Keith Kissee • Cell: 817-821-6263
Ph: 804-353-2220 • Fax: 804-353-2221
email: kksseedstock@comcast.net

PRSRF FIRST CLASS
US POSTAGE PAID
FORT WORTH, TEXAS
PERMIT #356

HEART^{OF}
MISSOURI



The *Cattle*
Drive

Sunday

October 18, 2009 1:00 pm

Laclede County Fairgrounds, Lebanon, Missouri