

WINNER

Sale 3

Wonderland



**Saturday, December 5, 2009
1:00 PM
Etherton Farms Limousin Sale
near Dawson, Illinois**

Etherton Farms

Bob & Donna Etherton
Ashley & Austen Etherton
8961 Oak Crest Road, Dawson, IL 62520
217.629.7650 • Fax: 217.629.7645
ethertonfarms@aol.com
Rob Bruce, Show/Sale Cattle • 217.737.0692



(L#2845)

R&R Marketing Company

Randy Ratliff

615.791.8982 • Fax: 615.791.8983
cell: 615.330.2735
3610 Bear Creek Lane
Thompson's Station, TN 37179
Sales@RRMktg.com
www.RRMktg.com



Dear Friends,

Donna, Ashley, Austen and I want to extend to you our warmest welcome to our farm. We sincerely hope you will be able to take time out of your busy schedule to join us as we host our 3rd Annual Sale.

A new member has been added to the Etherton Farms Team. Rob and Lindsey were blessed with the addition of Miss Tatum Robi Bruce on August 7th, 2009. We think she is something special.

We at Etherton Farms have a passion to produce quality seedstock and our efforts are seen in this offering. We also delight in seeing these animals go to new homes where they become building blocks for future herds as well as fun family projects.

Please come on December 5th, view the cattle and enjoy a Winner Wonderland day with all of us at Etherton Farms.

Sincerely,
Bob Etherton
Etherton Farms

Dear Limousin Breeders and Ethusiasts,

It is an honor for me to work closely with the Etherton Family on this 3rd annual Limousin and Limflex Production Sale. It is appropriately named Winner Wonderland Sale 3. In this sale you will have the opportunity to select from the very finest genetics they have to offer. You will be buying from one of the strongest herds of cattle in the country. They have been as successful as any family in America showing Limousin and Limflex cattle and results of their matings will shine in this sale offering. We are proud of their accomplishments they have made in the Limousin breed and are especially excited to debut this set of sale cattle to the public. You will find an elite set of show heifers, top notch herd sire prospects and a set of embryos that are like no other.



We invite you to attend this elite sale of 40 lots of the finest the Etherton Farms can offer to you. They are excited about the Limousin business and promote this breed of cattle to the highest level no matter where they go.

Sincerely Yours,
Randy Ratliff
R & R Marketing Company

WINNER

Wonderland

Sale 3



SALE DAY PHONES

R&R Marketing615.330.2735
 Bob Etherton217.899.0162
 Rob Bruce217.737.0692

SALE ACCOMODATIONS

Hotels are located in Springfield, Illinois

Hilton Garden Inn.....217.529.7171 (I-55 Stevenson Dr., Exit 94)
 Drury Inn & Suites217.529.3900 (I-55 Stevenson Dr., Exit 94)
 Hampton Inn217.529.1100 (I-55 Stevenson Dr., Exit 94)
 Super 8 Lodge of Springfield.....217.528.8889 (I-55 S. Grand Ave., Exit 96B)

AUCTIONEER

Sonny Booth918.533.5587

SALE CONSULTANT

Grassroots Consulting, Mark Smith.....515.229.5227

SALE MANAGEMENT



R&R Marketing Company

Randy Ratliff
 615.791.8982 • Fax: 615.791.8983
 cell: 615.330.2735
 3610 Bear Creek Lane, Thompson's Station, TN 37179
 Sales@RRMktg.com • www.RRMktg.com

(L#2845)

- All animals that qualify for Arthrogyrosis Multiplex (a.k.a. curly calf) have been tested and are negative.
- All animals that qualify for Neuropathic Hydrocephalus (a.k.a. waterhead) have been tested and are negative.



Bob & Donna Etherton • Ashley & Austen Etherton
 8961 Oak Crest Road, Dawson, IL 62520
 217.629.7650 • Fax: 217.629.7645 • ethertonfarms@aol.com
 Rob Bruce, Show/Sale Cattle • 217.737.0692

Saturday, DECEMBER 5, 2009 • 1:00 PM

Etherton Farms Limousin Sale

at Etherton Farms, Dawson, Illinois

Offering 40 Limousin & Lim-Flex Lots

25 Open Show-Heifer Prospects • 7 Bred Heifers
 5 Herd Sire Prospects • 4 Embryo Lots of 5 Each

SCHEDULE OF EVENTS

Saturday, December 5th

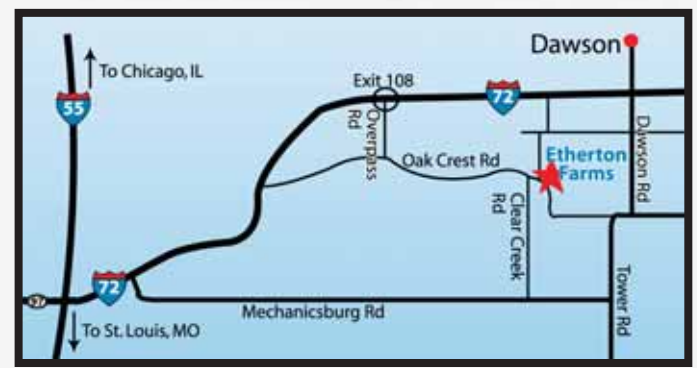
8:00 am Coffee & Pastries
 11:30 am Complimentary Lunch Served
 1:00 pm Winner Wonderland Sale

DIRECTIONS

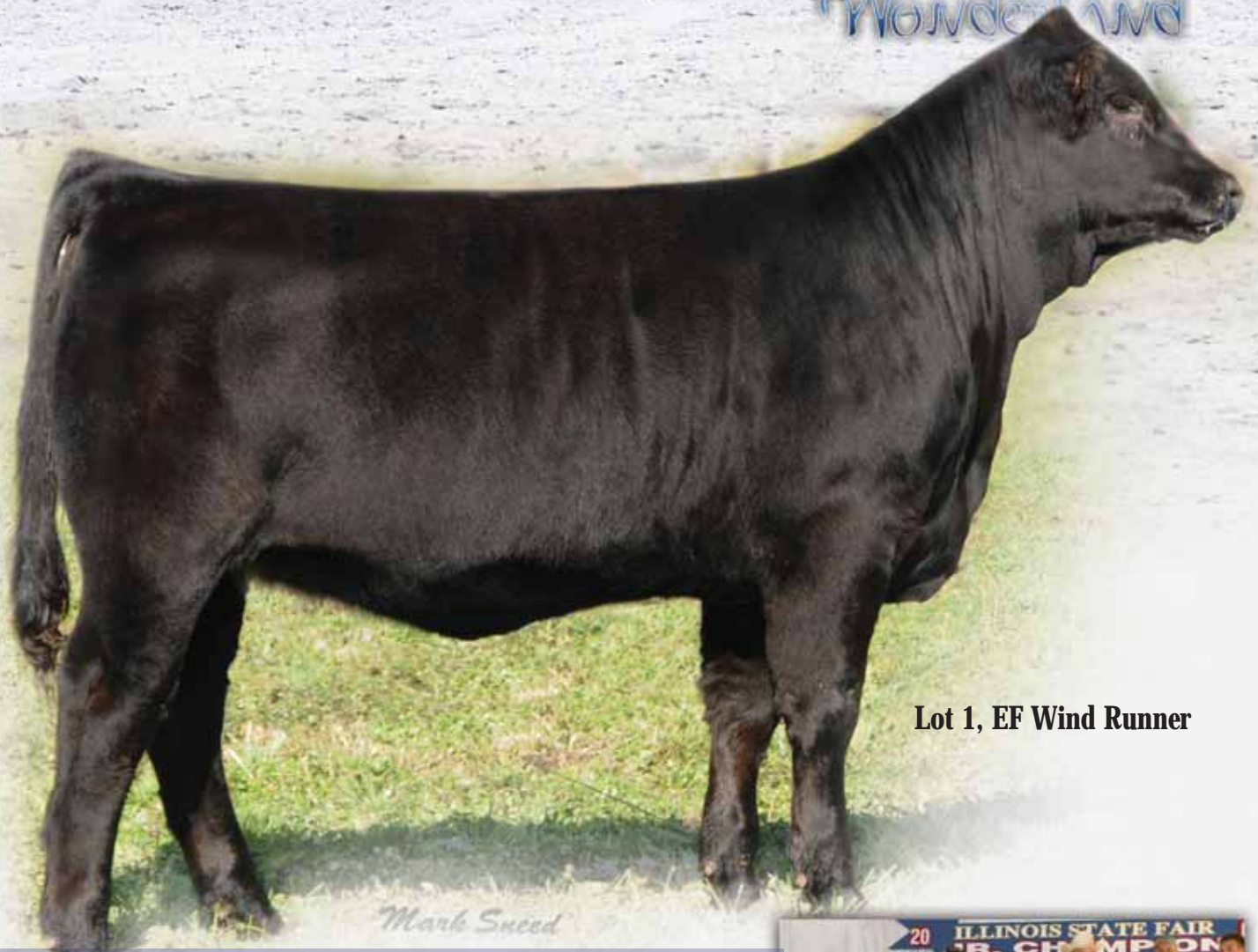
FROM DECATUR: Take I-72 West to Exit 108. Go South on Overpass Road to Oak Crest Road. Turn East on Oak Crest Road. Go 3 miles to sale site on East side of road.

FROM CHICAGO: Take I-55 South to Exit 98B (Decatur Exit). Head East on I-72 to Exit 108. Go South on Overpass Road to Oak Crest Road. Turn East on Oak Crest Road. Go 3 miles to sale site on East side of road.

FROM ST. LOUIS, MO: Take I-55 North to Exit 98A (Decatur Exit). Head East on I-72 to Exit 108. Go South on Overpass Road to Oak Crest Road. Turn East on Oak Crest Road. Go 3 miles to sale site on East side of road.



WINNER Sale 3
Wonderland



Lot 1, EF Wind Runner

Mark Sneed

MAGS Sheila Cow Family

- 2007 National Junior Heifer Show Grand Champion
- 2007 All American Futurity Show Grand Champion
 - 2007 Illinois State Fair Show Grand Champion
- 2007 Illinois State Fair Supreme Champion Over-All Breeds



MAGS Sheila, dam of Lots 1 & 2

LOT 1 EF WIND RUNNER

PB Limousin (100/89.0) Cow 02.28.09 ACET 438W
NPF 1938966 Double Polled Double Black

AUTO BLACK DAKOTA 129J EXLR DAKOTA 353G
EF MAIN STAY 541M DFCL JET SET BPC 34Y
EXLR 231J WULFS GUARDIAN 5074G
EXLR LUVLY 081F
GPF BLAQUE RULON BLACK DIAMOND
MAGS SHEILA QUAIL RUN RAMONA BP
MAGS MANDA EXLR DAKOTA 353G
MAGS JEWEL

| | CE | BW | WW | YW | MA | CM | SC | DC | CW | RE | YG | MS | SMI |
|------|----|-----|----|----|----|----|-----|----|----|------|-------|-------|-----|
| EPDs | 5 | 2.3 | 44 | 85 | 22 | 3 | 0.2 | 20 | 0 | 0.43 | -0.09 | -0.06 | 42 |
| | P | P+ | P+ | P | P | P | P | P | P | P | P | P | |

- Double polled and double black.
- One of the finest ever created in the EF program.
- Sired by the once reserve national champion EF Main Stay which was raised in the EF program and is now one of the elite A.I. sires in our breed.
- An elite show heifer that has a tremendous balance and symmetry.
- A known daughter of MAGS Sheila, a GPF BLAQUE RULON x MAGS MANDA daughter which happens to be one of the most prestigious show heifers ever in our breed.



Lot 2, EF Wind Talker



EF Main Stay 541M, sire of Lots 1 & 2

LOT 2 **EF WIND TALKER**

PB Limousin (100/89.0) Cow 03.11.09 ACET 442W
 NPM 1938968 Double Polled Double Black

AUTO BLACK DAKOTA 129J EXLR DAKOTA 353G
EF MAIN STAY 541M DFLL JET SET BPC 34Y
 EXLR 231J WULF'S GUARDIAN 5074G
 GPFF BLAQUE RULON EXLR LUVLY 081F
MAGS SHEILA BLACK DIAMOND
 MAGS MANDA QUAIL RUN RAMONA BP
 EXLR DAKOTA 353G

| | CE | BW | WW | YW | MA | CM | SC | DC | CW | RE | YG | MS | SMI |
|------|----|-----|----|----|----|----|-----|----|----|------|-------|-------|-----|
| EPDs | 5 | 2.0 | 45 | 85 | 22 | 3 | 0.2 | 20 | 0 | 0.43 | -0.09 | -0.06 | 42 |
| | P | P | P | P | P | P | P | P | P | P | P | P | |

- Selling half interest and Etherton will show at no cost to the buyer.
- BW: 86 lbs.; WW: 758 lbs.
- Double polled and double black.
- An elite show bull in the making and many think will follow the same successful footsteps as his sire, EF Main Stay 541M.
- Represents the strength in a mating when you blend the elite with the elite...the results in this young herd sire prospect is overwhelming.
- He has created tremendous interest in our breed and we honestly feel he will make a huge impact in our breed as he grows and develops.
- His conformation is near perfect and he is flawless in his design and profile.

WINNER Sale 3
Wonderland



Lot 3, EF Willa

MAGS Manuela Cow Family



AUTO Manuela 289S, dam of Lot 3

| | | |
|---|---------------------------|-------------------------------|
| LOT 3 | EF WILLA | |
| PB Limousin (100/89.1) Cow NPF 1927824 | 01.02.09 Double Polled | ACET 101W Homozygous Black |

| | |
|---|--|
| GPF BLAQUE RULON AUTO FULL THROTTLE 771R AUTO MISS DIAMOND 3747N | BLACK DIAMOND QUAIL RUN RAMONA BP ANDERS JAG D&M MISS MERCEDES 0190U HUNTS HI-LITER 245G LOGAN'S CHEERLEADER 280G EXLR LIMITED EDITION 765J AUTO CITY NIGHTS 214H |
| JCL LODESTAR 27L AUTO MANUELA 289S MAGS MANUELA | |

| | CE | BW | WW | YW | MA | CM | SC | DC | CW | RE | YG | MS | SMI |
|------|----|-----|----|----|----|----|-----|----|----|------|-------|------|-----|
| EPDs | 13 | 0.4 | 45 | 87 | 18 | 6 | 0.6 | - | 16 | 0.38 | -0.01 | 0.03 | 45 |
| | P | P | P | P | P | P | P | - | P | P | P | P | |

- One of the finest heifers in the entire sale.
- Represents lineage that is as strong as you would ever want-Rulon, Lodestar and MAGS Manuela.
- She is extremely long bodied, big boned and sound structured.
- Her dam is a daughter of JCL Lodestar 27L from the famed MAGS Manuela.



AUTO Black Dakota 129J, sire to Lot 4 embryos



EF Main Stay 541M



EXLR 231J, dam to Lot 4 embryos



Lot 5, EF Whoa Baby

- The figure head at the Etherton Farms program and one of the premier donor cows to ever exist in our breed
- She continues to amaze us with her progeny and her ability to project an elite show look, flawless profile and a tremendous amount of rib and volume into her offspring

EXLR 231J Cow Family

LOT 4 FIVE EMBRYOS

PB Limousin

EXLR DAKOTA 353G
AUTO BLACK DAKOTA 129J
 DFLC JET SET BPC 34Y
 WULFS GUARDIAN 5074G
EXLR 231J
 EXLR LUVLY 81F

WULF'S COUNT DOWN 9251C
 CANE RIDGE DAPHNE 011D
 GENERAL LEE LOJW 40S
 DFLC BPC 20U
 WULFS RAMBLER 8400X
 WULFS EXAMPLE 5074E
 WULFS DAWSON 4421D
 AMBL LUVLY 340Y

| | CE | BW | WW | YW | MA | CM | SC | DC | CW | RE | YG | MS | SMI |
|------|----|----|----|----|----|----|-----|----|----|----|-------|-------|-----|
| EPDs | 8 | 3 | 50 | 96 | 27 | 5 | 0.0 | 19 | 24 | 9 | -0.13 | -0.15 | 41 |
| | P | P | P | P | P | P | P | P | P | P | P | P | |

- The resulting progeny will be full siblings to the once reserve national champion sire EF Main Stay 541M.
- You will have instant value once these calves hit the ground...they represent the best of the best and are as predictable as money can buy.

LOT 5 EF WHOA BABY

PB Limousin (100/91.5) Cow
 NPF 1927829

03.10.09
 Double Polled

ACET 106W
 Red

CARROUSELS PEAK POWER
MAGS TURN AND BURN
 MAGS LADY ACE

GPFF BLAQUE RULON
 HC CHERISH
 EXLR INTRIGUE 361G
 CHAZ MISS GRETA 7003G
 WULFS RAMBLER 8400X
 WULFS EXAMPLE 5074E
 WULFS DAWSON 4421D
 AMBL LUVLY 340Y

WULFS GUARDIAN 5074G
EXLR 231J
 EXLR LUVLY 081F

| | CE | BW | WW | YW | MA | CM | SC | DC | CW | RE | YG | MS | SMI |
|------|----|-----|----|----|----|----|-----|----|----|------|-------|-------|-----|
| EPDs | 7 | 2.0 | 42 | 79 | 25 | 3 | 0.1 | - | 8 | 0.77 | -0.17 | -0.12 | 40 |
| | | 19 | 32 | 21 | 14 | 13 | 19 | P | - | P | P | P | |

- A March heifer that has a world of potential for those who want to show a great one.
- A daughter of the famed EXLR 231J and one of the super show heifer prospects in this sale.
- Sired by the Peak Power x MAGS Lady Ace, MAGS Turn and Burn, a junior herd sire for the EF program.
- This young heifer is extremely deep in her flank and long necked and feminine up through her front end which follows the same guidelines as her dam.



Lot 6, EF Wallflower

LOT 6 EF WALLFLOWER

PB Limousin (100/90.7) Cow 01.02.09 ACET 555W
 NPF 1938975 Homozygous Polled Double Black

GPFF BLAQUE RULON
DHVO DEUCE 132R
 AMY JO DHAN 20L

EXLR LIMITED EDITION 765J
EF READY FOR ANYTHING
 EXLR 231J

BLACK DIAMOND
 QUAIL RUN RAMONA BP
 BLACK CAT DHAN 152G
 GPFF AMBER JO
 EXLR POLLED BENCHMARK709G
 WULFS GLENDA 7021G
 WULFS GUARDIAN 5074G
 EXLR LUVLY 081F

| | CE | BW | WW | YW | MA | CM | SC | DC | CW | RE | YG | MS | SMI |
|------|----|-----|----|----|----|----|-----|----|----|------|-------|-------|-----|
| EPDs | 9 | 0.2 | 55 | 92 | 26 | 2 | 0.6 | 21 | 33 | 0.16 | -0.02 | -0.12 | 42 |
| | P | P+ | P+ | P | P | P | P | P | P | P | P | P | |

- Homozygous polled and double black.
- One of the great show prospects in the sale.
- Sired by the national champion sire DHVO Deuce and from a daughter of EXLR Limited Edition x EXLR 231J.
- She is extremely long and clean thru her front end and yet very strong in her stance and complete in her profile. We love her footsize, heaviness of bone and softness in her pasterns.

LOT 7 EF WRIGGLEY

Lim-Flex (50/44.1) Cow 04.15.09 ACET 371W
 LFF 1939338 Double Polled Black

OAR NORTHERN LEGEND 0143
TOP LINE 0517
 TOP LINE BLACKBIRD 0202

AUTO BLACK DAKOTA 129J
EF SURPRISE PARTY 491R
 EXLR 231J

NORTHERN IMPROVEMENT 4480
 O A R PATSY 117
 TOP LINE QUANTUM 905
 TOP LINE BLACKBIRD 011
 EXLR DAKOTA 353G
 DFCL JET SET BPC 34Y
 WULFS GUARDIAN 5074G
 EXLR LUVLY 081F

| | CE | BW | WW | YW | MA | CM | SC | DC | CW | RE | YG | MS | SMI |
|------|----|-----|----|----|----|----|----|----|----|-------|------|------|-----|
| EPDs | 8 | 1.0 | 50 | 99 | 34 | 3 | - | - | 15 | -0.18 | 0.16 | 0.06 | 46 |
| | P | P | P | P | P | P | - | - | P | P | P | P | |

- Sired by the Angus sire, Top Line, a son of OAR Northern Legend.
- Dam is a full sister in blood to EF Main Stay and daughter of EXLR 231J.
- An elite 50% Limflex heifer that comes from the heart of the EF program.
- She has a strong set of epd's with a breed highlight milk number of 34.

LOT 8 EF 568W

PB Limousin Cow 05.05.09 ACET 568W
 Pending Homozygous Polled Black

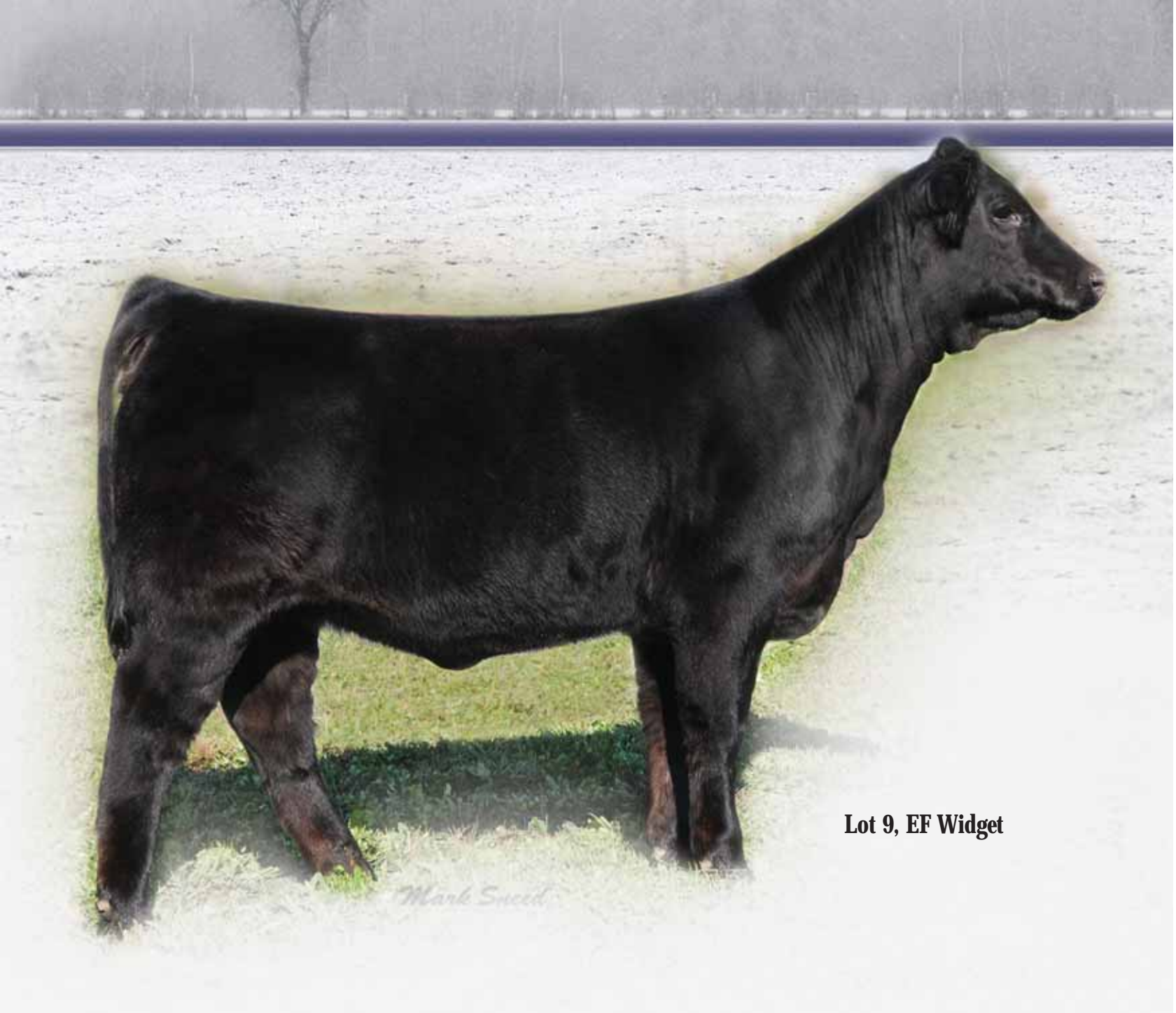
GPFF BLAQUE RULON
KRVN NASKAR 013N
 WL JU JU GAL 149J

THNU BLUE PRINT 245H
EF BLUE J 347R
 EXLR 231J

BLACK DIAMOND
 QUAIL RUN RAMONA BP
 COLE FIRST DOWN 46D
 CHR GOSSIP GAL
 WADDLES COBALT 3106
 TNUH MISS C245
 WULFS GUARDIAN 5074G
 EXLR LUVLY 081F

| | CE | BW | WW | YW | MA | CM | SC | DC | CW | RE | YG | MS | SMI |
|------|----|-----|----|----|----|----|-----|----|----|------|-------|-------|-----|
| EPDs | 9 | 0.6 | 41 | 78 | 21 | 3 | 0.6 | 17 | 22 | 0.76 | -0.06 | -0.15 | 38 |
| | P | P | P | P | P | P | P | P | P | P | P | P | |

- Sired by the moderate framed and big footed KRVN Naskar.
- From a daughter of Blue Print X EXLR 231J.
- She is moderate framed and very eye appealing.



Lot 9, EF Widget

Mark Sneed

Elite Show Heifer Prospects

LOT 9

EF WIDGET

| | | |
|---------------------------------------|---------------------------|-------------------------------|
| Lim-Flex (50/45.3) Cow LFF 1927843 | 03.11.09 Double Polled | ACET 334W Homozygous Black |
|---------------------------------------|---------------------------|-------------------------------|

| | |
|--|---|
| OAR NORTHERN LEGEND 0143 TOP LINE 0517 TOP LINE BLACKBIRD 0202 KRVN NOAH 015N MAGS SUNFLOWER MAGS MISS DAISEY | NORTHERN IMPROVEMENT 4480 O A R PATSY 117 TOP LINE QUANTUM 905 TOP LINE BLACKBIRD 011 GPFF BLAQUE RULON BLACK MOLLY KDPI 62F EXLR LIMITED EDITION 765J MAGS JULIET |
|--|---|

| | CE | BW | WW | YW | MA | CM | SC | DC | CW | RE | YG | MS | SMI |
|------|----|-----|----|----|----|----|----|----|----|-------|------|------|-----|
| EPDs | 8 | 0.2 | 38 | 79 | 28 | 2 | - | - | 10 | -0.22 | 0.16 | 0.06 | 42 |
| | 11 | 31 | 17 | 08 | 06 | 10 | - | - | P | P | P | P | |

- If you want an elite show heifer that is long necked and very clean up through her front end and well balanced....then here she is.
- A big time show heifer prospect and one that can for sure stand the major competition.
- This double polled and homozygous black heifer has it all stacked in her favor..if you are looking for a show prospect that will then work well in your program then here she is.
- Sired by the Angus sire Top Line and from a daughter of KRVN Noah.

WINNER Sale 3
Wonderland



**Lot 10,
 EF Wishful Thinking**

Mark Sweet

LOT 10 EF WISHFUL THINKING

PB Limousin (100/87.6) 03.19.09 ACET 447W
 NPF 1938972 Homozygous Polled Red

LVLS FARMER 4G
LVLS SECRET WEAPON 4408K
 LVLS 408H

GPFF BLAQUE RULON
EF SUMATRA 990P
 EXLR 301H

COLE FIRST DOWN 46D
 LVLS JENI 601V
 LVLS POLLED JUSTICE 0601E
 LVLS MISS STABILIZER 1408E
 BLACK DIAMOND
 QUAIL RUN RAMONA BP
 SLVL BLACK OXEN 190D
 REXANNE 204B

| | CE | BW | WW | YW | MA | CM | SC | DC | CW | RE | YG | MS | SMI |
|------|----|-----|----|----|----|----|-----|----|----|------|-------|------|-----|
| EPDs | 5 | 3.6 | 58 | 99 | 25 | 8 | 0.9 | 10 | 19 | 0.34 | -0.04 | 0.00 | 48 |
| | P | P+ | P+ | P | P | P | P | P | P | P | P | P | |

- Red and homozygous polled.
- Sired by the proven outcross and one of the biggest numbered sires in our breed, LVLS Secret Weapon.
- A gorgeous red heifer that is straight lined, strong topped and very prominent in her stance.
- She has a tremendous look and profile and an elite show look that will be very advantageous for the junior that shows her.



Lot 11, EF Wide Awake

Mark Sneed



Lot 12, EF Wendy

LOT 11 **EF WIDE AWAKE**

PB Limousin (93/84.1) Cow
NPF 1938976

01.05.09
Polled

ACET 556W
Homozygous Black

EXLR POLLED RESOLVE 175G
EXLR EXCELLANTE 251L
EXLR 199H

COLE FIRST DOWN 46D
TNUH MISS LOLITA 44L
TNUH MISS C245

KRMC BLACK LEGACY 917B
LKCC SMITH CATTLE 110C
WULFS FANFARE 4055F
EXLR 558F
LKCC TOMAHAWKS TOUCHDOWN
2 155P
RUNL 486A
MS ROTT 172A

| | CE | BW | WW | YW | MA | CM | SC | DC | CW | RE | YG | MS | SMI |
|------|----|------|----|----|----|----|-----|----|----|------|------|------|-----|
| EPDs | 8 | -1.3 | 37 | 71 | 31 | -1 | 1.3 | 26 | 18 | 0.08 | 0.04 | 0.09 | 44 |
| | P | P+ | P+ | P | P | P | P | P | P | P | P | P | |

- Double polled and homozygous black.
- Moderate framed and very easy in her condition.
- Sired by the elite outcross sire EXLR Excellante 251L and from a daughter of COLE First Down.
- She is a great number package with a 31 for milk, .09 for marbling and low birth of -1.3.

LOT 12 **EF WENDY**

Lim-Flex (75/66.6)
LFF 1927833

01.17.09
Double Polled

ACET 324W
Double Black

GPF BLAQUE RULON
MAGS SAVAGE
MAGS MANDA

EXAR NEW LOOK 2971
EXLR REBEKA 299R
EXLR REBECA 7296N

BLACK DIAMOND
QUAIL RUN RAMONA BP
EXLR DAKOTA 353G
MAGS JEWEL
BON VIEW NEW DESIGN 1407
N BAR PRIMROSE 2424
MAGS JUMANJI
EXLR REBECA 384K

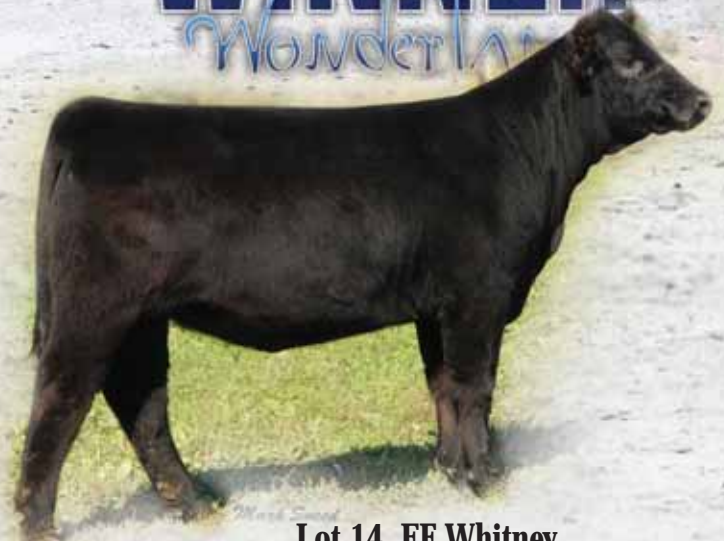
| | CE | BW | WW | YW | MA | CM | SC | DC | CW | RE | YG | MS | SMI |
|------|----|-----|----|----|----|----|-----|----|----|------|------|------|-----|
| EPDs | 1 | 3.1 | 51 | 95 | 24 | 0 | 0.7 | 9 | 17 | 0.23 | 0.09 | 0.13 | 49 |
| | | 13 | 32 | 19 | 11 | 10 | 12 | P | P | P | P | P | |

- Here is a 75% Limflex heifer that has a "cool" look to her.
- We love the length of body, strength of top and striking profile of this show heifer prospect.
- Sired by the syndicated homozygous black son of Rulon, MAGS Savage.
- She has a 95 for yearling weight, 24 for milk, .23 for REA and .13 for IMF.

WINNER Sale 3
Wonderland



**Lot 13,
EF Whitley**



Lot 14, EF Whitley



Lot 15, EF Whimsy

WLR Direct Hit daughters

LOT 13

EF WHITLEY

Lim-Flex (50/44.4) Cow
LFF 1927834

02.20.09
Homozygous Polled

ACET 325W
Homozygous Black

KRVN NASKAR 013N
WLR DIRECT HIT
MAGS NIGHT AMBUSH

BASIN FRANCHISE P142
HB 0996 ENVIOUS BLACKBIRD
RR ENVIOUS BLACKBIRD 0996

GPFF BLAQUE RULON
WL JU JU GAL 149J
AUTO BLACK DAKOTA 129J
MISS WULFETTE 6230F
C A FUTURE DIRECTION 5321
BASIN CHLOE 812L
E&B 1483 SCOTHCAMAN 5041
RR ENVIOUS BLACKBIRD 0996

| | CE | BW | WW | YW | MA | CM | SC | DC | CW | RE | YG | MS | SMI |
|------|----|-----|----|----|----|----|----|----|----|------|------|------|-----|
| EPDs | 6 | 0.4 | 52 | 96 | 25 | 2 | - | - | 27 | 0.09 | 0.10 | 0.03 | 46 |
| | 11 | 31 | 19 | 12 | 08 | 10 | - | - | P | P | P | P | |

- You are going to love this moderate framed, thick made and powerful show prospect.
- Homozygous polled and homozygous black.
- One of the very best 50% Limflex heifers to be offered this year at auction.
- Sired by the moderate framed, WLR Direct Hit and out of a daughter of Basin Franchise.

LOT 14

EF WHITNEY

Lim-Flex (50/44.4) Cow
LFF 1927835

01.26.09
Homozygous Polled

ACET 326W
Homozygous Black

KRVN NASKAR 013N
WLR DIRECT HIT
MAGS NIGHT AMBUSH

WOODLAWN CHARGE ON 14
H B 3401 RACHEL 710
EXAR RACHEL 3401

GPFF BLAQUE RULON
WL JU JU GAL 149J
AUTO BLACK DAKOTA 129J
MISS WULFETTE 6230F
CONNEALY LEAD ON
D D PRIDE 211 5175
TWIN VALLEY PRECISIONE161
BALDRIDGE RACHEL 710H

| | CE | BW | WW | YW | MA | CM | SC | DC | CW | RE | YG | MS | SMI |
|------|----|-----|----|-----|----|----|----|----|----|----|----|----|-----|
| EPDs | 6 | 2.2 | 61 | 112 | 26 | 2 | - | - | - | - | - | - | - |
| | 11 | 30 | 18 | 12 | 08 | 10 | - | - | - | - | - | - | - |

- Homozygous polled and homozygous black.
- A 50% Limflex daughter sired by WLR Direct Hit out of a daughter of Woodlawn Charge On.
- This long necked and clean fronted heifer has a strong epd package to go with her prominent profile.
- She has a 112 for yearling weight epd and 26 for milk.

LOT 15

EF WHIMSY

Lim-Flex (75/64.7)
LFF 1927831

01.06.09
Homozygous Polled

ACET 322W
Double Black

KRVN NASKAR 013N
WLR DIRECT HIT
MAGS NIGHT AMBUSH

B C MATRIX 4132
NBLF DOLL BABY 715T
NBLF DOLL BABY 518R

GPFF BLAQUE RULON
WL JU JU GAL 149J
AUTO BLACK DAKOTA 129J
MISS WULFETTE 6230F
O C C EMBLAZON 854E
CAF PURE PRIDE EXT 99
NBLF DROVER 309N
NBLF DOLL BABY 243M

| | CE | BW | WW | YW | MA | CM | SC | DC | CW | RE | YG | MS | SMI |
|------|----|-----|----|-----|----|----|----|----|----|------|------|-------|-----|
| EPDs | 5 | 2.3 | 58 | 102 | 24 | 2 | - | 3 | 30 | 0.38 | 0.02 | -0.06 | 45 |
| | 12 | 32 | 18 | 11 | 06 | 10 | - | P | P | P | P | P | |

- Homozygous polled and double black.
- A well balanced 75% Limflex heifer that is very pleasing to the eye.
- She is one that will get your attention on sale day and for sure on show day.
- She has a 102 for yearling weight and 24 for milk.



Lot 16, EF Watch This



MAGS Scotland, sire of Lots 16, 17, 18 & 19

MAGS Scotland daughters

LOT 16 EF WATCH THIS

Lim-Flex (75/65.7) Cow 03.14.09 ACET 445W
LFF 1938970 Homozygous Polled Homozygous Black

BR MIDLAND
MAGS SCOTLAND
MAGS MARQUEE

TWIN VALLEY PRECISIONE161
BR ROYAL LASS 7036-19
EXLR DAKOTA 353G
MAGS JEWEL
EXLR DAKOTA 353G
DFLC JET SET BPC 34Y
COLE FIRST DOWN 46D
WULFS GRAVITY 7191G

AUTO BLACK DAKOTA 129J
EXLR JUMP AND SHOUT 210P
MAGS JUMP AND SHOUT

| | CE | BW | WW | YW | MA | CM | SC | DC | CW | RE | YG | MS | SMI |
|------|----|-----|----|----|----|----|-----|----|----|------|------|------|-----|
| EPDs | 5 | 0.1 | 51 | 88 | 24 | 3 | 0.4 | - | 18 | 0.08 | 0.12 | 0.17 | 50 |
| | P | P+ | P+ | P | P | P | P | - | P | P | P | P | |

- Homozygous polled and homozygous black.
- Sired by the national champion Limflex sire, MAGS Scotland.
- She has a huge number package with a .17 for marbling and above breed average in all other traits.
- She is very clean and feminine fronted through her front end and very eye appealing.

LOT 18 EF WHISPER

Lim-Flex (75/65.7) Cow 03.15.09 ACET 446W
LFF 1938971 Homozygous Polled Red

BR MIDLAND
MAGS SCOTLAND
MAGS MARQUEE

TWIN VALLEY PRECISIONE161
BR ROYAL LASS 7036-19
EXLR DAKOTA 353G
MAGS JEWEL
EXLR DAKOTA 353G
DFLC JET SET BPC 34Y
COLE FIRST DOWN 46D
WULFS GRAVITY 7191G

AUTO BLACK DAKOTA 129J
EXLR JUMP AND SHOUT 210P
MAGS JUMP AND SHOUT

| | CE | BW | WW | YW | MA | CM | SC | DC | CW | RE | YG | MS | SMI |
|------|----|-----|----|----|----|----|-----|----|----|------|------|------|-----|
| EPDs | 5 | 0.7 | 42 | 88 | 24 | 3 | 0.4 | - | 18 | 0.08 | 0.12 | 0.17 | 48 |
| | P | P+ | P+ | P | P | P | P | - | P | P | P | P | |

- Red and homozygous polled.
- A full sibling to the previous two lots and a strong representative of a powerful mating.
- The blending of MAGS Scotland with the proven AUTO Black Dakota daughter has worked quite well.

LOT 17 EF WESTON

Lim-Flex (75/65.7) 03.14.09 ACET 444W
LFF 1938969 Homozygous Polled Double Black

BR MIDLAND
MAGS SCOTLAND
MAGS MARQUEE

TWIN VALLEY PRECISIONE161
BR ROYAL LASS 7036-19
EXLR DAKOTA 353G
MAGS JEWEL
EXLR DAKOTA 353G
DFLC JET SET BPC 34Y
COLE FIRST DOWN 46D
WULFS GRAVITY 7191G

AUTO BLACK DAKOTA 129J
EXLR JUMP AND SHOUT 210P
MAGS JUMP AND SHOUT

| | CE | BW | WW | YW | MA | CM | SC | DC | CW | RE | YG | MS | SMI |
|------|----|-----|----|----|----|----|-----|----|----|------|------|------|-----|
| EPDs | 5 | 0.4 | 47 | 88 | 24 | 3 | 0.4 | - | 18 | 0.08 | 0.12 | 0.17 | 49 |
| | P | P+ | P+ | P | P | P | P | - | P | P | P | P | |

- Homozygous polled and double black.
- This 75% Limflex heifer is from a daughter of AUTO Black Dakota 129J.
- Sired by the national champion MAGS Scotland, a proven son of BR Midland out of MAGS Marquee.
- She is big numbered and with her prominent pedigree, we know you will appreciate her on sale day.

LOT 19 EF WOOHOO

Lim-Flex (75/65.3) 03.01.09 ACET 561W
LFF 1938979 Homozygous Polled Double Black

BR MIDLAND
MAGS SCOTLAND
MAGS MARQUEE

TWIN VALLEY PRECISIONE161
BR ROYAL LASS 7036-19
EXLR DAKOTA 353G
MAGS JEWEL
ANDERS JAG
COLE 87G
AUTO BLACK DAKOTA 129J
EXLR REBECA 614H

COLE MONTANA SKY 36M
EXLR REBECA 717P
EXLR REBECA 606M

| | CE | BW | WW | YW | MA | CM | SC | DC | CW | RE | YG | MS | SMI |
|------|----|------|----|----|----|----|-----|----|----|-------|------|------|-----|
| EPDs | 4 | -0.3 | 37 | 77 | 16 | 3 | 0.4 | - | 3 | -0.04 | 0.12 | 0.16 | 46 |
| | P | P+ | P | P | P | P | P | - | P | P | P | P | |

- Homozygous polled and double black daughter of MAGS Scotland.
- This 75% Limflex heifer is a daughter of many times show champion female, EXLR Rebeca 717P.
- She has a low birth of -0.3 and .17 for marbling.
- She is the result of the blending of national champion genetics and we hope you will be pleased with the results.

Embryos

WINNER Sale 3 Wonderland



MAGS Unloosen



EXLR Molly 605R



EF Smack Down 764S



MAGS Rose Petal



MAGS Unloosen



DVFC Fergie 109T

LOT 20

FIVE EMBRYOS

87% Limousin

GPFF BLAQUE RULON
MAGS UNLOOSEN
MAGS PARADISE CANYON

COLE MONTANA SKY 36M
EXLR MOLLY 605R
EXLR MOLLY 4136J

BLACK DIAMOND
QUAIL RUN RAMONA BP
BR MIDLAND
MISS WULFETTE 6230F
ANDERS JAG
COLE 87G
EXLR DAKOTA 353G
EXLR MOLLY 343G

| | CE | BW | WW | YW | MA | CM | SC | DC | CW | RE | YG | MS | SMI |
|------|----|-----|----|----|----|----|-----|----|----|------|------|------|-----|
| EPDs | 9 | 2.4 | 40 | 77 | 15 | 2 | 0.3 | 7 | 6 | 0.47 | 0.09 | 0.02 | 42 |
| | P | P | P | P | P | P | P | P | P | P | P | P | P |

- Double polled and double black.
- Sired by the All American Futurity Champion Limflex sire MAGS Unloosen.
- The dam is the 2006 Nat'l Junior Heifer Show champion and All-American Futurity reserve champion, EXLR Molly 605R.
- The premier genetics of these breed greats will add much value to the resulting progeny.
- The pedigree, the numbers and the unique profile of both will be a huge hit.

LOT 21

FIVE EMBRYOS

50% Limousin

EF MAIN STAY 541M
EF SMACK DOWN 764S
M L PRUDENCE 427

DFLC JET SET BPC 34Y
EXLR 231J
V A R GATEWAY 4101
M L PRUDENCE 9014
BLACK DIAMOND
QUAIL RUN RAMONA BP
CONNELLY DATELINE
E&B LADY STACKER 727

GPFF BLAQUE RULON
MAGS ROSE PETAL
TECC DATELINE'S GAL 10J

| | CE | BW | WW | YW | MA | CM | SC | DC | CW | RE | YG | MS | SMI |
|------|----|------|----|----|----|----|-----|----|----|-------|------|------|-----|
| EPDs | 8 | -1.3 | 43 | 81 | 23 | 2 | 0.1 | 12 | 5 | -0.15 | 0.15 | 0.08 | 45 |
| | P | P | P | P | P | P | P | P | P | P | P | P | P |

- Double black and homozygous polled.
- Sired by the national champion Limflex sire, EF Smack Down and from the '07 All American Futurity Limflex champion, MAGS Rose Petal.
- National champion genetics all wrapped up in these embryos and the results are going to be exciting.

LOT 22

THREE EMBRYOS

62% Limousin

GPFF BLAQUE RULON
MAGS UNLOOSEN
MAGS PARADISE CANYON

EXLR NATIVE 7133N
DVFC FERGIE 109T
DVFC 290H

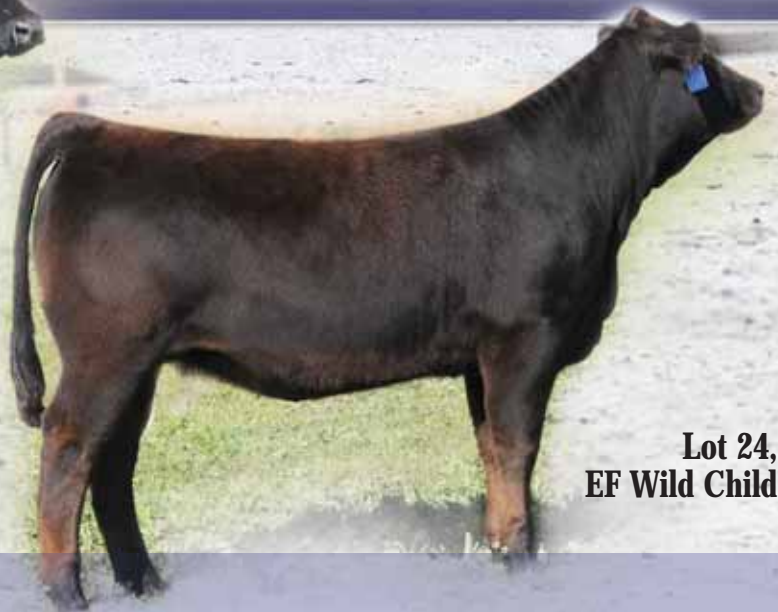
BLACK DIAMOND
QUAIL RUN RAMONA BP
BR MIDLAND
MISS WULFETTE 6230F
EXLR JUDO 459J
TRAK EXLR ANNIE
SLDJ POLLED EQUITY
SLVL 104E

| | CE | BW | WW | YW | MA | CM | SC | DC | CW | RE | YG | MS | SMI |
|------|----|-----|----|----|----|-----|----|----|----|------|------|------|-----|
| EPDs | 6 | 2.3 | 48 | 85 | 0 | 0.2 | 17 | 29 | 29 | 0.64 | 0.07 | 0.02 | 44 |
| | P | P | P | P | P | P | P | P | P | P | P | P | P |

- Homozygous polled and double black.
- Sired by the All American Futurity Champion Limflex sire MAGS Unloosen and the \$65,000 top selling bull of the breed in 2009.
- From the EXLR Native daughter out of the \$70,000 DVFC 290H and now donor in the EF program.



Lot 23, SBLX Unna 391U



Lot 24, EF Wild Child

Open Heifers

LOT 23

SBLX UNNA 391U

Lim-Flex (37/34.6) Cow
LFF 1924612

09.01.08
Homozygous Polled

SBLX 391U
Homozygous Black

S A F FOCUS OF E R
MYTTY IN FOCUS
MYTTY COUNTESS 906

TNUH BLUE PRINT 245H
MAGS SALMETTO
MAGS PALMETTO

S A F FAME
G D A R FOREVER LADY 246
SITZ ALLIANCE 6595
BALDRIDGE COUNTESS 357
WADDLES COBALT 3106
TNUH MISS C245
BR MIDLAND
MISS WULFETTE 6230F

| | CE | BW | WW | YW | MA | CM | SC | DC | CW | RE | YG | MS | SMI |
|------|----|------|----|-----|----|----|-----|----|----|-------|------|------|-----|
| EPDs | 11 | -1.8 | 55 | 102 | 28 | 1 | 0.3 | 18 | 32 | -0.02 | 0.28 | 0.27 | 54 |
| | P | 28 | 23 | 20 | 19 | P | P | P | P | P | P | P | P |

- Homozygous polled and homozygous black.
- A 37% Limflex heifer that has a ton of rib and a lot of volume.
- Sired by the elite Angus sire In Focus and from a daughter of TNUH Blue Print.
- She has a 102 for YW, 28 for MA and 0.27 for MARB.
- She is ready to go into production and then easily can be an elite donor cow.

LOT 25

EF WILDWIND

Lim-Flex (75/63.9) Cow
LFF 1939337

04.01.09
Homozygous Polled

ACET 370W
Double Black

AUTO DOLLAR GENERAL 122R
MAGS TWAIN
THOMAS PATRICIA 1911

EXLR EXCELLANTE 251L
MAGS SMURFETTE
CARROUSELS JAMAICA

LVLS SECRET WEAPON 4408K
AUTO KYRIA 232K
GAR PRECISION 1680
THOMAS PATRICIA 1176
EXLR POLLED RESOLVE 175G
EXLR 199H
COLE FIRST DOWN 46D
CANE RIDGE CELEST 6169

| | CE | BW | WW | YW | MA | CM | SC | DC | CW | RE | YG | MS | SMI |
|------|----|-----|----|----|----|----|-----|----|----|------|------|------|-----|
| EPDs | 8 | 0.3 | 46 | 93 | 29 | 1 | 0.8 | - | 33 | 0.04 | 0.19 | 0.23 | 51 |
| | P | P+ | P | P | P | P | P | - | P | P | P | P | P |

- Homozygous polled and double black
- One of the biggest numbered heifers of the entire sale with a low birth of 0.3 and .23 for marbling
- Sired by the syndicated double homozygous sire MAGS Twain
- From a daughter of EXLR Excellante out of the dam of the national champion Nasdaq

LOT 24

EF WILD CHILD

PB Limousin (100/89.0) Cow
NPF 1938967

03.09.09
Double Polled

ACET 441W
Double Black

LVLS FARMER 4G
LVLS SECRET WEAPON 4408K
LVLS 408H

EXLR POLLED RESOLVE 175G
EXLR JENNA 751L
EXLR 817F

COLE FIRST DOWN 46D
LVLS JENI 601V
LVLS POLLED JUSTICE 0601E
LVLS MISS STABILIZER 1408E
KRMC BLACK LEGACY 917B
LKCC SMITH CATTLE 110C
WULF'S COUNT DOWN 9251C
YKCC JENNA 135B

| | CE | BW | WW | YW | MA | CM | SC | DC | CW | RE | YG | MS | SMI |
|------|----|-----|----|----|----|----|-----|----|----|------|-------|------|-----|
| EPDs | 7 | 2.6 | 49 | 87 | 32 | 7 | 0.9 | 12 | 22 | 0.19 | -0.05 | 0.09 | 48 |
| | P | P+ | P+ | P | P | P | P | P | P | P | P | P | P |

- Sired by the outcross and huge numbered sire LVLS Secret Weapon.
- From a daughter of EXLR Polled Resolve 175G, EXLR Jenna 751L.
- She has a 32 for milk and a .09 for marbling.

LOT 26

EF WINSOME

PB Limousin (100/89.6)
NPF 1939336

04.25.09
Double Polled

ACET 212W
Black

CARROUSELS PEAK POWER
MAGS TURN AND BURN
MAGS LADY ACE

LVLS SECRET WEAPON 4408K
MAGS PRETTY CHRISTINE
ROYAL DRL 108K

GPFF BLAQUE RULON
HC CHERISH
EXLR INTRIGUE 361G
CHAZ MISS GRETA 7003G
LVLS FARMER 4G
LVLS 408H
EXLR DAKOTA 353G
CANE RIDGE DUTCHESS 124D

| | CE | BW | WW | YW | MA | CM | SC | DC | CW | RE | YG | MS | SMI |
|------|----|-----|----|----|----|----|-----|----|----|------|-------|-------|-----|
| EPDs | 4 | 3.8 | 50 | 88 | 32 | 4 | 0.7 | - | 22 | 0.60 | -0.03 | -0.01 | 45 |
| | P | P+ | P | P | P | P | P | - | P | P | P | P | P |

- A purebred daughter of MAGS Turn and Burn, a son of Peak Power out of MAGS Lady Ace.
- From a daughter of LVLS Secret Weapon that is a solid producer in the EF program.
- A strong representative of the sale and top notch replacement heifer for only the most quality conscious program.

WINNER Sale 3
Wonderland



**Lot 27,
SBLX U Turn 694U**



Lot 29, EF Uriela



Lot 28, EF Wakita

LOT 27 **SBLX U TURN 694U**

Lim-Flex (50/41.9) Cow 09.01.08 SBLX 694U
LFF 1924613 Homozygous Polled Double Black

S A F FOCUS OF E R
MYTTY IN FOCUS
MYTTY COUNTESS 906
EXLR EXCELLANTE 251L
SGAZ SAY WHAT 694S
SGAZ ANGEL
S A F FAME
G D A R FOREVER LADY 246
SITZ ALLIANCE 6595
BALDRIDGE COUNTESS 357
EXLR POLLED RESOLVE 175G
EXLR 199H
EXLR DAKOTA 353G
GPFF KIANA

| | CE | BW | WW | YW | MA | CM | SC | DC | CW | RE | YG | MS | SMI |
|------|----|------|----|----|----|----|-----|----|----|-------|------|------|-----|
| EPDs | 9 | -2.1 | 49 | 94 | 31 | -1 | 0.6 | 21 | 25 | -0.14 | 0.21 | 0.16 | 49 |
| | P | 28 | 21 | 19 | 17 | P | P | P | P | P | P | P | |

- Homozygous polled and double black.
- Here is a big time 50% Limflex heifer sired by In Focus and from a daughter of EXLR Excellante 251L.
- She posts a -2.1 for BW, 94 for YW, 31 for MA and a 0.16 for MARB.
- 694U has a tremendous amount of rib shape and the premier brood cow look.

LOT 29 **EF URIELA**

PB Limousin (100/90.2) Cow 10.08.08 ACET 907U
NPF 1926787 Double Polled Homozygous Black

JCL LODESTAR 27L
KRVN SOMBRAY 126S
GPFF BLAQUE CRYSTAL
EXLR JUDO 459J
TUBB JUDO 582R
TUBB SEVEN 371N
HUNTS HI-LITER 245G
LOGAN'S CHEERLEADER 280G
BLACK DIAMOND
QUAIL RUN RAMONA BP
WULFS GUARDIAN 5074G
CM POLLED KATIE
L 7'N SEVEN
WILLIAMS LUCKY DAY 106J

| | CE | BW | WW | YW | MA | CM | SC | DC | CW | RE | YG | MS | SMI |
|------|----|-----|----|----|----|----|-----|----|----|------|------|-------|-----|
| EPDs | 8 | 0.5 | 46 | 80 | 17 | 4 | 0.3 | - | 33 | 0.53 | 0.01 | -0.09 | 40 |
| | 13 | 28 | 16 | 12 | 08 | 12 | P | - | P | P | P | P | |

- Homozygous black and double polled.
- Sired by a JCL Lodestar x GPFF Blaque Rulon son.
- This heifer is long bodied and very eye appealing in her profile.
- She is ready to go right into production.

LOT 28 **EF WAKITA**

PB Limousin (100/89.0) Cow 03.22.09 ACET 448W
NPF 1938973 Double Polled Homozygous Black

LVLS FARMER 4G
LVLS SECRET WEAPON 4408K
LVLS 408H
EXLR POLLED RESOLVE 175G
EXLR JENNA 751L
EXLR 817F
COLE FIRST DOWN 46D
LVLS JENI 601V
LVLS POLLED JUSTICE 0601E
LVLS MISS STABILIZER 1408E
KRMC BLACK LEGACY 917B
LKCC SMITH CATTLE 110C
WULF'S COUNT DOWN 9251C
YKCC JENNA 135B

| | CE | BW | WW | YW | MA | CM | SC | DC | CW | RE | YG | MS | SMI |
|------|----|-----|----|----|----|----|-----|----|----|------|-------|------|-----|
| EPDs | 7 | 1.9 | 51 | 87 | 32 | 7 | 0.9 | 12 | 22 | 0.19 | -0.05 | 0.09 | 49 |
| | P | P+ | P+ | P | P | P | P | P | P | P | P | P | |

- Homozygous black and double polled.
- A very complete made and well structured daughter of LVLS Secret Weapon.
- Her solid number package along with her predictable pedigree makes for a nice investment.

LOT 30 **EF WILLOW**

PB Limousin (100/89.5) 04.01.09 ACET 211W
NPF 1939335 Double Polled Red

CARROUSELS PEAK POWER
MAGS TURN AND BURN
MAGS LADY ACE
AUTO BLACK DAKOTA 129J
AUTO KRISHNA 210N
AUTO JULIA 247J
GPFF BLAQUE RULON
HC CHERISH
EXLR INTRIGUE 361G
CHAZ MISS GRETA 7003G
EXLR DAKOTA 353G
DFLC JET SET BPC 34Y
WULFS GUARDIAN 5074G
EXLR LUVLY 087F

| | CE | BW | WW | YW | MA | CM | SC | DC | CW | RE | YG | MS | SMI |
|------|----|-----|----|----|----|----|-----|----|----|------|-------|-------|-----|
| EPDs | 5 | 3.5 | 50 | 91 | 20 | 2 | 0.5 | - | 13 | 0.66 | -0.14 | -0.10 | 43 |
| | P | P+ | P | P | P | P | P | - | P | P | P | P | |

- A red and double polled heifer that is royally bred.
- Sired by the Peak Power x Lady Ace son, MAGS Turn and Burn.
- From a solid producing daughter of AUTO Black Dakota 129J.
- This purebred heifer has the look and promise of an elite replacement female.



Lot 31, EF Unlisted



Lot 32, EF Untried



Lot 33, ACET Ultramodern Girl



**DA Traveler
004 703T,**
service sire to
Bred Heifers.

Bred Heifers

LOT 31

EF UNLISTED

Lim-Flex (50/45.4) Cow 04.25.08 ACET 379U
LFF 1912281 Homozygous Polled Homozygous Black

HUNTS HI-LITER 245G
JCL LODESTAR 27L
LOGAN'S CHEERLEADER 280G
C A FUTURE DIRECTION 5321
HF B/R RUBY OF TIFFANY
B/R RUBY OF TIFFANY 5113
WADDLES COBALT 3106
TNUH MISS C245
COLE FIRST DOWN 46D
TTCC CONFIDENCE MAKER
GAR PRECISION 1680
C A MISS POWER FIX 308
B/R NEW DESIGN 036
B/R RUBY OF TIFFANY 155

| | CE | BW | WW | YW | MA | CM | SC | DC | CW | RE | YG | MS | SMI |
|------|----|------|----|----|----|----|-----|----|----|-------|------|------|-----|
| EPDs | 13 | -2.1 | 48 | 99 | 31 | 7 | 0.4 | 13 | 46 | -0.12 | 0.31 | 0.36 | 55 |
| | P | 34 | 24 | 21 | 22 | P | P | P | 23 | 22 | 22 | 22 | |

LOT 32

EF UNTRIED

Lim-Flex (50/45.4) Cow 05.01.08 ACET 382U
LFF 1912282 Homozygous Polled Homozygous Black

HUNTS HI-LITER 245G
JCL LODESTAR 27L
LOGAN'S CHEERLEADER 280G
C A FUTURE DIRECTION 5321
HF B/R RUBY OF TIFFANY
B/R RUBY OF TIFFANY 5113
WADDLES COBALT 3106
TNUH MISS C245
COLE FIRST DOWN 46D
TTCC CONFIDENCE MAKER
GAR PRECISION 1680
C A MISS POWER FIX 308
B/R NEW DESIGN 036
B/R RUBY OF TIFFANY 155

| | CE | BW | WW | YW | MA | CM | SC | DC | CW | RE | YG | MS | SMI |
|------|----|------|----|-----|----|----|-----|----|----|-------|------|------|-----|
| EPDs | 13 | -1.6 | 50 | 101 | 31 | 7 | 0.4 | 13 | 46 | -0.10 | 0.36 | 0.41 | 57 |
| | P | 34 | 21 | 21 | 22 | P | P | P | 23 | 22 | 22 | 22 | |

- P.E. 7.10-8.17.09 to DA Traveler 004 703.
- Homozygous polled and homozygous black.
- Big time brood cow in the making with a 6.57 for IMF scan data.
- She posts a .41 for MARB, 31 for MA and 101 for YW.
- She has a very complete and promising brood cow look to her.

LOT 33

ACET ULTRAMODERN GIRL

Lim-Flex (37/33.7) 03.16.08 ACET 541U
LFF 1910389 Double Polled Homozygous Black

JCL LODESTAR 27L
LH RODEMASTER 338R
VERMILION E BLACKBIRD9546
SIR WMS DESIGN 5762
MAGS PENDULUM 541P
MAGS 17M
HUNTS HI-LITER 245G
LOGAN'S CHEERLEADER 280G
VERMILION 31 STACLER 3491
CH ENV BLACKBIRD C5941
GENETICS BY DESIGN 049
STEVENSON ZARA 4576
MAGS JUMANJI
EXR COUNTESS 5005

| | CE | BW | WW | YW | MA | CM | SC | DC | CW | RE | YG | MS | SMI |
|------|----|-----|----|-----|----|----|-----|----|----|-------|------|------|-----|
| EPDs | 7 | 0.5 | 56 | 112 | 29 | 3 | 0.6 | - | 54 | -0.32 | 0.51 | 0.35 | 56 |
| | P | P | P | P | P | P | P | - | 18 | 17 | 17 | 17 | |

- P.E. 7.10-8.17.09 to DA Traveler 004 703.
- One of the featured bred heifers of the entire sale.
- She is made perfect with a ton of rib and volume.
- She has a breed leading set of epd's with a 112 for YW, 29 for MA and 0.35 for MARB.

WINNER Sale 3
Wonderland



**Lot 34,
MDCD 14U**



Lot 35, CJLM Deka 435U



Lot 36, CJLM Classic Cookie 398T

LOT 34 **MDCD 14U**

| | | | | | | | | | | | | | | |
|---|--|---|-----------|-------------------|-----------|-----------|-----------|-----------|-----------|-----------|-----------|-----------|------------|----|
| PB Limousin (100/87.1) Cow NPF 1919865 | | 04.29.08 Double Polled | | MDCD 14U Black | | | | | | | | | | |
| GPFF BLAQUE RULON LESF ASPHALT 9N GPFF EXTRA SWEET ELITE AUTO BLACK DAKOTA 129J EF TELL ME NOW 363R DVFC MISS SABLE 381H | | BLACK DIAMOND QUAIL RUN RAMONA BP LKCC TOMAHAWKS TOUCHDOWN HC EXTRAORDINARY HCR 61X EXLR DAKOTA 353G DFCL JET SET BPC 34Y CHAZ FIRST CHOICE 6004F SLVL SABLE COOKIE 381E | | | | | | | | | | | | |
| CE | | BW | WW | YW | MA | CM | SC | DC | CW | RE | YG | MS | SMI | |
| EPDs | | 1 | 3.9 | 44 | 80 | 23 | -1 | 0.5 | 16 | 1 | 0.36 | -0.16 | -0.12 | 40 |
| | | 21 | 31 | 27 | 23 | 15 | 20 | 18 | P | P | P | P | P | |

LOT 35 **CJLM DEKA 435U**

| | | | | | | | | | | | | | | |
|---|--|---|-----------|---------------------------|-----------|-----------|-----------|-----------|-----------|-----------|-----------|-----------|------------|----|
| Lim-Flex (68/62.7) Cow LFF 1919228 | | 03.02.08 Double Polled | | CJLM 435U Double Black | | | | | | | | | | |
| EXLR POLLED RESOLVE 175G EXLR EXCELLANTE 251L EXLR 199H EXAR NEW DESIGN 3903 AUTO DEKA 630R AUTO DEKA 891N | | KRMC BLACK LEGACY 917B LKCC SMITH CATTLE 110C WULFS FANFARE 4055F EXLR 558F BON VIEW NEW DESIGN 1407 RR MISS EMULOUS 6391 AUTO AMERICAN IDOL 162L AUTO LAVEDA 867L | | | | | | | | | | | | |
| CE | | BW | WW | YW | MA | CM | SC | DC | CW | RE | YG | MS | SMI | |
| EPDs | | 6 | 0.9 | 44 | 85 | 36 | -3 | 0.9 | - | 27 | -0.03 | 0.14 | 0.17 | 48 |
| | | P | 29 | 20 | 16 | 11 | P | P | - | P | P | P | P | |

- Due 4.15.10 to DA Traveler 004 703.
- Sired by the big numbered and outcross sire EXLR Excellante 251L and from a New Design daughter.
- She has a 0.9 for BW, 36 for MA and 0.17 for MARB.
- This double polled and double black heifer is a strong replacement and one you will like.

LOT 36 **CJLM CLASSIC COOKIE 398T**

| | | | | | | | | | | | | | | |
|---|--|---|-----------|---------------------------|-----------|-----------|-----------|-----------|-----------|-----------|-----------|-----------|------------|----|
| PB Limousin (100/91.1) NPF 1908287 | | 11.12.07 Double Polled | | CJLM 398T Double Black | | | | | | | | | | |
| GPFF BLAQUE RULON MNWS FRONTIER 507R WELZ MACY 203M WULFS QUARTERBACK 4222B SLVL DREAM COOKIE 138D EAFM COOKIE | | BLACK DIAMOND QUAIL RUN RAMONA BP EXLR DAKOTA 353G REI MISSY 970G LKCC TOMAHAWKS TOUCHDOWN MISS WOLFETTE 4221S POLLED POWER BUIT 8V WLCC SABLE | | | | | | | | | | | | |
| CE | | BW | WW | YW | MA | CM | SC | DC | CW | RE | YG | MS | SMI | |
| EPDs | | 8 | 2.0 | 39 | 74 | 27 | 4 | 0.3 | 16 | 4 | 0.70 | -0.26 | -0.19 | 37 |
| | | P | P | P | P | P | P | P | P | P | P | P | P | |

- Due 3.27.10 to MAGS Unloosen.
- You are going to love this bred heifer - she is sired by Frontier from SLVL Dream Cookie.
- This female has a stacked pedigree that represents the best of the best.
- She is moderate in her frame and very easy in her condition and we know will make a great brood cow for the new owner.

Lot 37, EF Wild At Heart

Bulls

Lot 38, EF Wrangler

Lot 39, EF Unmerciful

Lot 40, EF UR Predestined

LOT 37 EF WILD AT HEART

Lim-Flex (68/61.6) Bull 03.15.09 ACET 104W
LFM 1927827 Homozygous Polled Homozygous Black

GPF BLAQUE RULON
EF TUNE UP 210T
DSUL BEDAZZLED 497K

DHVO DEUCE 132R
MAGS TENDERHEARTED
THOMAS PATRICIA 1897

BLACK DIAMOND
QUAIL RUN RAMONA BP
CHAZ FIRST CHOICE 6004F
DSUL SULLIVAN'S MARIA
GPF BLAQUE RULON
AMY JO DHAN 20L
GAR PRECISION 1680
THOMAS PATRICIA 1176

| | CE | BW | WW | YW | MA | CM | SC | DC | CW | RE | YG | MS | SMI |
|------|----|-----|----|----|----|----|-----|----|----|------|------|------|-----|
| EPDs | 5 | 0.7 | 47 | 87 | 24 | 0 | 0.5 | - | 32 | 0.33 | 0.09 | 0.06 | 46 |
| | 12 | 29 | 16 | 09 | 08 | 11 | P | - | P | P | P | P | |

- BW: 84 lbs.; WW: 770 lbs.
- Homozygous black and homozygous polled.
- A member of the 2009 All American Futurity Grand Champion Limflex Pair.
- Sired by the Etherton and Riverdale herd sire EF Tune Up 210T.
- From the elite donor and many times show champion MAGS Tenderhearted, a 50% Limflex daughter of the national champion Deuce.

LOT 39 EF UNMERCIFUL

Lim-Flex (75/66.6) Bull 09.01.08 ACET 911U
LFM 1928145 Homozygous Polled Double Black

EXLR NEW GENERATION 071M
MAGS SASQUATCH
MAGS FRUITFUL 487M

COLE FIRST DOWN 46D
KRCO 33G
GAR 6807 TRAVELER 902

AUTO BLACK DAKOTA 129J
EXLR LUVLY 084F
EXLR LIMITED EDITION 765J
WULFS FRUITFUL 6052F
LKCC TOMAHAWKS TOUCHDOWN
2 155P
D H D TRAVELER 6807
GAR BANDO 78

| | CE | BW | WW | YW | MA | CM | SC | DC | CW | RE | YG | MS | SMI |
|------|----|------|----|----|----|----|-----|----|----|-------|------|------|-----|
| EPDs | 11 | -2.1 | 31 | 70 | 29 | 6 | 0.3 | 21 | 15 | -0.01 | 0.14 | 0.10 | 42 |
| | P | 33 | 26 | 12 | 11 | P | 08 | P | P | P | P | P | |

- BW: 60 lbs.; WW: 545 lbs.; YW: 1,108 lbs.
- Homozygous polled and double black.
- A powerful 75% Limflex son of the highly syndicated sire MAGS Sasquatch.
- From the predictable First Down daughter, KRCO 33G.
- This bull is big numbered, thick made and powerful in his stance.

LOT 38 EF WRANGLER

Lim-Flex (75/65.6) Bull 02.20.09 ACET 560W
LFM 1938978 Homozygous Polled Homozygous Black

GPF BLAQUE RULON
DHVO TREY 133R
AMY JO DHAN 20L

AUTO BLACK DAKOTA 129J
VVLC BLACK LUCY 416R
WHITESTONE LUCY L128

BLACK DIAMOND
QUAIL RUN RAMONA BP
BLACK CAT DHAN 152G
GPF AMBER JO
EXLR DAKOTA 353G
DFLC JET SET BPC 34Y
V D A R LUCYS BOY
WHITESTONE LUCY J249

| | CE | BW | WW | YW | MA | CM | SC | DC | CW | RE | YG | MS | SMI |
|------|----|-----|----|----|----|----|-----|----|----|------|------|-------|-----|
| EPDs | 6 | 1.0 | 46 | 87 | 24 | 1 | 0.6 | 12 | 23 | 0.19 | 0.03 | -0.02 | 43 |
| | P | P | P | P | P | P | P | P | P | P | P | P | |

- BW: 85 lbs.; WW: 726 lbs.
- Homozygous black and homozygous polled.
- The look and profile of this herd sire prospect is amazing.
- Sired by the popular DHVO Trey, a full brother to the national champion DHVO Deuce.
- From an elite Council and Etherton Farms donor by AUTO Black Dakota, VVLC Black Lucy 416R.

LOT 40 EF UR PREDESTINED

Lim-Flex (25/21.3) 09.12.08 ACET 924U
LFM 1932448 Homozygous Polled Homozygous Black

B/R NEW DESIGN 036
G A R PREDESTINED
G A R EXT 4206

COLE FIRST DOWN 46D
KRCO 33G
GAR 6807 TRAVELER 902

V D A R NEW TREND 315
B/R BLACKCAP EMPRESS 76
N BAR EMULATION EXT
G A R 6807 TRAVELER 1432
LKCC TOMAHAWKS TOUCHDOWN
2 155P
D H D TRAVELER 6807
GAR BANDO 78

| | CE | BW | WW | YW | MA | CM | SC | DC | CW | RE | YG | MS | SMI |
|------|----|------|----|----|----|----|-----|----|----|-------|------|------|-----|
| EPDs | 10 | -1.6 | 44 | 94 | 35 | 4 | 0.4 | 15 | 30 | -0.37 | 0.41 | 0.45 | 56 |
| | P | P | P | P | P | P | P | P | P | P | P | P | |

- BW: 71 lbs.; WW: 610 lbs.; YW: 1,204 lbs.
- Homozygous polled and homozygous black.
- Ready to go to work for you...he's rugged, stout made & very heavily muscled.
- Sired by the big time Angus sire GAR Predestined and from the KRCO 33G donor cow.
- He has a 35 for milk, 0.45 for MARB and 56 for MTI.



R&R
Marketing Company
 3610 Bear Creek Lane
 Thompson's Station, TN 37179

(L#2845)

**FIRST CLASS
 PRE-SORTED
 PAID**
 Montezuma, Iowa
 Permit No. 30

Catalog
 designed by



WINNER

Sale 3

Wonderland

EF Genetics Work!
Ask Our Customers.



EF Tune Up 210T

Many-time Champion. A powerful herd sire
 owned with Riverdale Ranch, MS.



**EF Tickle My
 Fancy 570T**

2008 Canadian
 Show Female of
 the Year, owned
 by Koyle Farms,
 Ontario



EF Trend Setter 206T

2008 NAILE Grand Champion, Open Show
 2008 NAILE Reserve Grand Champion, Junior Show
 Owned by Cori Harrison, IL

**EF Up To
 The Challenge**

2009 Oklahoma Field Day Champion
 Many-Time Champion
 Owned by Rachel Booth, OK

