

Wieczorek Limousin's



Annual Production Sale
Friday, February 26, 2010

1:00 p.m. (CST)

Corsica (SD) Sale Barn

Selling 55 Head
3 Two-Year-Old Bulls
& 52 Yearling Bulls

Sale Day Phone:
(605) 946-5459



Lot 4



Lot 50

WIECZOREK LIMOUSIN

30th ANNUAL PRODUCTION SALE

Friday, February 26, 2010

1:00 p.m. (CT)

Corsica Sale Barn
Corsica, SD

Sale Day Phone:
605-946-5459

Ramada Inn, Mitchell • 605-996-6501
Just off I-90 at Exit 330

Hampton Inn, Mitchell • 605-996-1575
Just off I-90 at Exit 332

Parkway Motel, Corsica • 605-946-5230

Auctioneer:

C.K. "Sonny" Booth

Sale Consultant:



Mark A. Smith
2511 NE 99th Pl. • Ankeny, IA 50021
Phone/Fax: 515/965-1458

Catalog Produced by:
RAVELLETTE PUBLICATIONS, INC.
P.O. Box 788, Philip, SD 57567

Philip - Wall - Kadoka - Faith - Bison - Murdo - New Underwood
Phone: (605) 859-2516; e-mail: ads@pioneer-review.com
www.rpipromotions.com

Selling 55 Head

3 Two-Year-Old Bulls
52 Yearling Bulls

95% Polled

45% Black

Special Features

- * Free wintering until April 15th
- * Free delivery to 250 miles (central points beyond)
- * 1/2 down, balance due on delivery
- * All bulls unconditionally guaranteed first breeding season

Schedule of Events

- 9:30 to 12 Noon Viewing of Cattle
11:30 to 12:30 Limousin Beef Lunch
1:00 p.m. Sale Begins



Wallace & Noreen Wieczorek
605/227-4611
39778 267th St. • Mt. Vernon, SD

Curt & Leanne Wieczorek
605/227-4601
39768 267th St. • Mt. Vernon, SD

Fellow Cattlemen,

Welcome to the Wieczorek Limousin 30th Anniversary Production Sale. It seems like only yesterday we were eagerly expecting the first limousin influenced calves to be born here at the ranch. Now, thirty-five years later we are well underway with the next generation of calves hitting the ground and we are equally as excited to see if the decisions made last summer end up as good as we anticipated. By sale day, we will be half done calving and I'm happy to report that the calves are even more exciting than we had expected. The future looks bright.

The bulls we have selected for this offering are wide topped, deep bodied, easy doing individuals that will compliment any program. These bulls will maximize your return whether seedstock or commercial. Feed costs at historic levels only serve to underscore the importance of a highly profitable product that can convert megacals into muscle as efficiently as possible and no breed can do this better than limousin.

Each bull has been evaluated thoroughly before being included in this offering. Special attention has been given to disposition, structural soundness of feet and legs, and mobility. Attention is also given to performance and EPD's making sure minimum requirements are being met in all categories in order to be considered for this sale. In all, cattle are being evaluated for 20 different traits and attributes before being placed in this catalog.

Each bull selling will have complete performance data and EPD's, as well as carcass ultrasound information. We have also added percentile ranking values into each lot box. The number is followed by a % sign and correlates with the information provided in the percentile ranking table at the bottom of page 12. To better understand this information, if you see a 20% below the birth EPD that would indicate this bull has an EPD that ranks in the top 20% for all 2008-2010 born calves. This shows you at a glance which traits each bull excels in. You can rest assured that all information on the bulls will be provided either in the catalog or on the supplement sheet provided sale day. This gives you the ability to make the most informed decision possible. If you have any questions about the bulls or the data provided, just give us a call and we would be happy to answer them.

At Wieczorek Limousin our goal is to make your bull buying experience as stress free as possible. All bulls selling are unconditionally guaranteed for the first breeding season. This includes death, injury and dissatisfaction. We will also keep your purchase until April 15 and then arrange delivery up to 250 miles at absolutely no cost to you. If you live beyond 250 miles, we will work with you in locating a satisfactory central point. Wieczorek Limousin will also provide you the option of paying ½ down sale day with the balance due at delivery.

Feel free to stop by the ranch anytime prior to the sale to view the bulls. If you have questions about the offering or need assistance with travel arrangements, just pick up the phone and give us a call; we would be happy to assist. If for some reason you are unable to attend, but still need a bull, we can help you with that also. We take the risk out of buying on order with our sight unseen satisfaction guarantee. Your order will be handled in a confidential and professional manner, and if you don't like the bull when you get him, you don't own him. It's that simple. Again, we look forward to seeing you in Corsica on the 26th.

The Wieczoreks



TOP TEN SALE BULLS BY EPD TRAITS

CED

| | |
|----|----|
| 5 | 19 |
| 9 | 17 |
| 7 | 16 |
| 12 | 16 |
| 4 | 15 |
| 19 | 15 |
| 16 | 14 |
| 18 | 14 |
| 20 | 14 |
| 15 | 13 |
| 28 | 13 |

BW

| | |
|----|------|
| 5 | -3.9 |
| 7 | -1.8 |
| 9 | -1.8 |
| 4 | -1.3 |
| 33 | -1.3 |
| 12 | -1.0 |
| 45 | -0.8 |
| 15 | -0.7 |
| 14 | -0.5 |
| 6 | 0.0 |

WW

| | |
|----|----|
| 19 | 63 |
| 30 | 62 |
| 53 | 62 |
| 54 | 61 |
| 50 | 60 |
| 37 | 57 |
| 17 | 56 |
| 26 | 56 |
| 40 | 56 |
| 22 | 55 |
| 52 | 55 |

YW

| | |
|----|-----|
| 53 | 114 |
| 30 | 109 |
| 50 | 108 |
| 54 | 107 |
| 19 | 105 |
| 52 | 102 |
| 13 | 100 |
| 22 | 97 |
| 26 | 97 |
| 37 | 97 |
| 41 | 97 |
| 47 | 97 |

MA

| | |
|----|----|
| 34 | 37 |
| 18 | 32 |
| 12 | 31 |
| 14 | 31 |
| 15 | 30 |
| 5 | 28 |
| 4 | 27 |
| 6 | 27 |
| 7 | 27 |
| 8 | 27 |
| 24 | 27 |
| 32 | 27 |

CEM

| | |
|----|----|
| 29 | 11 |
| 4 | 10 |
| 5 | 10 |
| 6 | 10 |
| 18 | 10 |
| 7 | 9 |
| 12 | 9 |
| 14 | 9 |
| 34 | 9 |
| 35 | 9 |

SC

| | |
|----|----|
| 35 | .8 |
| 37 | .8 |
| 50 | .8 |
| 20 | .7 |
| 10 | .6 |
| 11 | .6 |
| 14 | .6 |
| 23 | .6 |
| 38 | .6 |
| 54 | .6 |

ST

| | |
|----|----|
| 2 | 21 |
| 24 | 21 |
| 6 | 20 |
| 13 | 20 |
| 19 | 20 |
| 21 | 20 |
| 36 | 20 |
| 43 | 20 |
| 46 | 20 |
| 55 | 20 |

DOC

| | |
|----|----|
| 22 | 32 |
| 36 | 32 |
| 34 | 30 |
| 50 | 30 |
| 52 | 30 |
| 54 | 29 |
| 3 | 28 |
| 10 | 28 |
| 13 | 27 |
| 21 | 26 |

CW

| | |
|----|----|
| 7 | 52 |
| 10 | 48 |
| 12 | 46 |
| 15 | 44 |
| 16 | 44 |
| 19 | 43 |
| 53 | 42 |
| 9 | 41 |
| 13 | 39 |
| 14 | 35 |

REA

| | |
|----|------|
| 32 | 1.00 |
| 1 | .92 |
| 16 | .92 |
| 19 | .92 |
| 7 | .90 |
| 12 | .86 |
| 36 | .86 |
| 10 | .84 |
| 28 | .82 |
| 54 | .81 |

YG

| | |
|----|------|
| 1 | -.40 |
| 32 | -.27 |
| 36 | -.26 |
| 25 | -.25 |
| 54 | -.25 |
| 27 | -.24 |
| 29 | -.24 |
| 31 | -.24 |
| 30 | -.21 |
| 20 | -.19 |

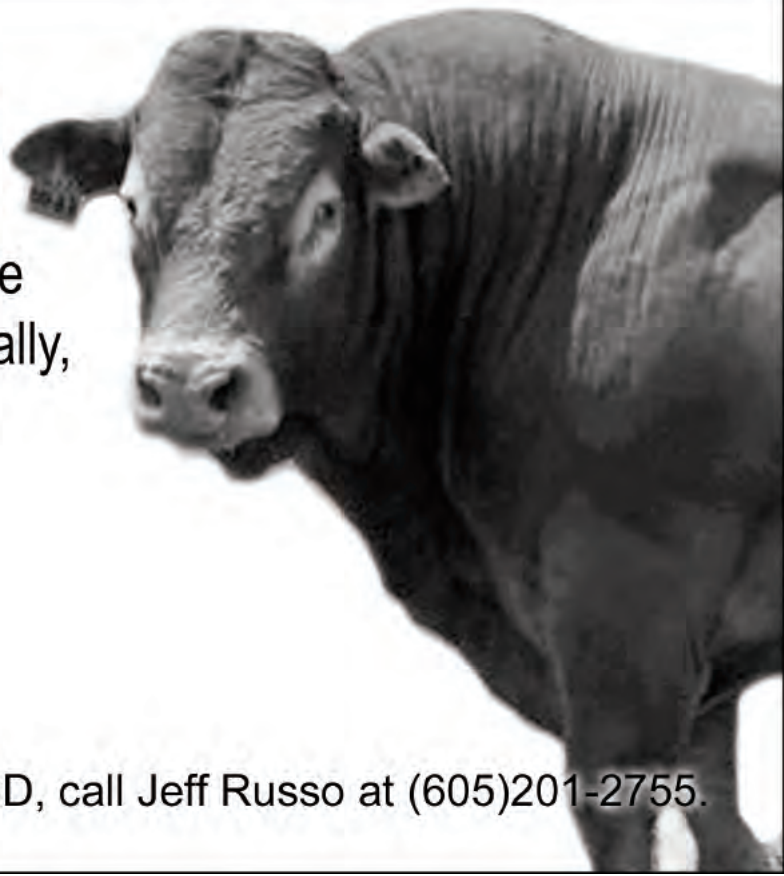
MARB

| | |
|----|-----|
| 15 | .09 |
| 10 | .04 |
| 4 | .03 |
| 14 | .03 |
| 18 | .03 |
| 6 | .02 |
| 8 | .02 |
| 46 | .02 |
| 7 | .01 |
| 12 | .01 |
| 24 | .01 |
| 53 | .01 |

\$MTI

| | |
|----|----|
| 53 | 50 |
| 50 | 48 |
| 54 | 48 |
| 15 | 47 |
| 19 | 47 |
| 10 | 46 |
| 16 | 46 |
| 18 | 46 |
| 30 | 46 |
| 32 | 46 |

We Pay Full Value
for your lean, Continental
Bulls, Calves, and Fed Cattle
that have been raised naturally,
without antibiotics or
growth hormones.



**LAURA'S
LEAN BEEF™**

CATTLE RAISED WITHOUT ANTIBIOTICS
OR ADDED GROWTH HORMONES

1-800-ITS-LEAN

In SD, call Jeff Russo at (605)201-2755.

Scenes from the past ...



About the bulls ...

At Wieczorek Limousin, we believe the way young bulls are grown and maintained prior to their first breeding season is crucial and has a direct impact on the future longevity of each individual. Care must be taken not to push the bulls too hard as this ultimately often leads to problems that could have otherwise been avoided. Our feeding program consists of a balanced ration of silage, ground alfalfa hay, high moisture earlage, corn and supplement. From weaning to yearling, the bulls are fed to gain approximately three pounds per day. The majority of this time is spent on either a 44 or 46 megecal ration. Once yearling weights have been taken, the bulls are backed down to a ration that will maintain a two-pound per day gain. A strong mineral program is also essential to ensure proper growth and development. To achieve this, we employ a mixture of free choice and force fed products.

Our vaccination and herd health program consists of the following. Each bull has received two doses of 7-way, IBR-BVD-PI3-BRSV and Somnus, and a single dose of One Shot (pasteurella haemolytica), Pinkeye Shield and been treated with dectomax pour on at least twice.

For several years, we have utilized diagnostic testing to help us monitor the health status of our herd. We have been certified by the state as a Level 1 Johne's-free herd. Every female entering the herd is tested for Johne's, Outgrowth BVD, and Leukosis and must receive a negative reading on all tests to remain in the herd. Additionally, all sale bulls have also been tested for Outgrowth BVD and Leukosis and have also tested negative.

The fall bulls have already been semen tested, however, due to their age the yearling bulls have not. If you take your bull early, we would ask you to have the bull tested prior to turn out. If you leave your purchase with us, we will have him tested prior to delivery. We will also vaccinate him with IBR-BVD-PI3-BRSV and pour him with dectomax. We believe strongly in spring deworming and all cows, calves and bulls in our breeding program receive dectomax prior to grass. He will also be vaccinated to protect against pinkeye and hoof rot. It is our goal to eliminate as many potential problems as possible.

TWO-YEAR-OLD BULLS



WZRK Mr GENESIS 9002U

PB Bull Polled / Red BD: 3/12/08 NPM-1916231

WZRK GENESIS 532E } GALILEO LLLL LLLL
 NPM-1253620 LLLL LLLL H } TEXS STAR GLINT LLLL LLLL H
 WZRK MISS FORTUNE COOKIE } SLVL FORTUNE COOKIE 6187F LLLL LLL* P
 NPF-1509204 LLLL LLL* P } WZRK 7013G LLLL LLL* P

| PERF | CE | BW | ADJ. WW | ADJ. YW | SC | SMTI | | | | | | | |
|--------------------|-----|-----|---------|---------|------|------|-----|----|-----|-----|-----|-----|------|
| | A | 95 | 582 | 1015 | 34.1 | 44 | | | | | | | |
| EPDs | CED | BW | WW | YW | MA | CEM | SC | ST | DOC | CW | REA | YG | MARB |
| | 8 | 2.9 | 43 | 72 | 12 | 8 | 0.3 | 18 | 11 | 11 | .92 | -40 | -.06 |
| ACC | .21 | .36 | .31 | .26 | .24 | .20 | .19 | P | .20 | .24 | .23 | .23 | .23 |
| Percentile Ranking | -- | -- | -- | -- | -- | 10% | -- | -- | -- | -- | 1% | 1% | -- |



WZRK Mr RAWHIDE 9026U

PB Bull Polled / Red BD: 4/9/08 NPM-1916235

RAWHIDE 740L } L7 BLACK DIAMOND 766G LLLL LLL* P
 NPM-1655222 LLLL LLL* P } NP MISS TYGER 187E LLLL LLL* P
 WZRK MISS RAMBLER 9026H } WULFS RAMBLER 8400X LLLL LLL* S
 NPF-1509246 LLLL LLL* H } WZRK MISS UNILATERAL 445B LLLL LLL* H

| PERF | CE | BW | ADJ. WW | ADJ. YW | SC | SMTI | | | | | | | |
|--------------------|-----|-----|---------|---------|------|------|------|-----|-----|-----|-----|-----|------|
| | A | 90 | 616 | | 30.1 | 38 | | | | | | | |
| EPDs | CED | BW | WW | YW | MA | CEM | SC | ST | DOC | CW | REA | YG | MARB |
| | 8 | 1.2 | 33 | 53 | 25 | 3 | -0.3 | 21 | 6 | 3 | .52 | -18 | -.08 |
| ACC | .20 | .36 | .30 | .25 | .19 | .19 | .29 | .19 | .19 | .21 | .20 | .20 | .20 |
| Percentile Ranking | -- | -- | -- | -- | 30% | -- | -- | -- | -- | -- | -- | 10% | -- |



WZRK Mr RANGERRIDER 843U

PB Bull Horned / Red BD: 4/25/08 NPM-1916088

WULFS RANGE RIDER 2056R } RGMA NIGHT RIDER 73N LLLL LLL* P
 NPM-1808947 LLLL LLL* P } WULFS MAGGIE 2056M LLLL LLL* P
 WZRK MISS WEBSTER 843F } PLLP POLLED WEBSTER 30X LLLL LLL* P
 NPF-1298414 LLLL LLL* P } WZRK MISS BRUN 721T LLLL LLL1 H

| PERF | CE | BW | ADJ. WW | ADJ. YW | SC | SMTI | | | | | | | |
|--------------------|-----|-----|---------|---------|------|------|-----|-----|-----|-----|-----|-----|------|
| | A | 100 | 685 | 1207 | 35.0 | 42 | | | | | | | |
| EPDs | CED | BW | WW | YW | MA | CEM | SC | ST | DOC | CW | REA | YG | MARB |
| | 3 | 3.9 | 51 | 89 | 24 | 5 | 0.2 | 28 | 21 | .65 | -18 | -12 | |
| ACC | .22 | .36 | .31 | .26 | .18 | .21 | .19 | .18 | .21 | .20 | .20 | .20 | .20 |
| Percentile Ranking | -- | -- | 20% | 30% | 30% | 30% | -- | -- | 5% | -- | 20% | 10% | -- |

2008-2010 BORN CALVES

| | CE | Birth | Weaning | Yearling | Milking | CE | Scrotal | Carcass | Ribeye | Yield | Marbling | | | |
|--------------------|--------|--------|---------|----------|---------|----------|---------|-------------|---------|--------|----------|--------|--------|--------|
| | Direct | Weight | Weight | Weight | Ability | Maternal | Circum. | Stayability | Doclity | Weight | Area | Grade | Score | \$MTI |
| Number of Calves | 38,556 | 39,327 | 39,326 | 39,326 | 39,783 | 38,556 | 33,523 | 1,611 | 23,135 | 27,611 | 27,611 | 27,611 | 27,611 | 27,547 |
| Average EPD | 7.7 | 1.5 | 42.7 | 80.2 | 21.4 | 3.3 | 0.4 | 17.3 | 15.3 | 20.0 | 0.37 | -0.02 | 0.01 | 44.4 |
| Standard Deviation | 3.9 | 1.9 | 8.4 | 13.5 | 5.1 | 3.0 | 0.3 | 3.7 | 7.8 | 13.3 | 0.30 | 0.16 | 0.14 | 5.2 |
| Min EPD | -9 | -8.1 | -1 | 23 | -8 | -10 | -1.0 | 5 | -26 | -51 | -1.06 | -0.40 | -0.29 | 27 |
| Max EPD | 26 | 9.8 | 91 | 134 | 45 | 17 | 1.9 | 28 | 40 | 83 | 1.24 | 0.70 | 0.84 | 73 |
| Wieczorek Sale | 8.8 | 1.9 | 48 | 85 | 21.5 | 4.9 | 0.33 | 18.5 | 20.2 | 25.6 | 0.65 | -0.13 | -0.05 | 43.5 |
| Avg. EPD | | | | | | | | | | | | | | |

YEARLING BULLS



WZRK Mr Tuff Enuff 7008W

PB Bull Double Polled / Black BD: 1/26/09 NPM-1941305

ROMN TUFF ENUFF 103T { WULFS RANSOM 3059R LLLL LLL* P
 NPM-1878994 LLLL LLL* P { ROMN ROBERTA 35R LLLL LLL* P

WZRK MISS RENEGADE 7008T { ROMN RENEGADE 111R LLLL LLL* P
 NPF-1889456 LLLL LLL* P { WZRK MISS H FIELD 1060L LLLL LLL* P

| PERF | CE | BW | ADJ. WW | ADJ. YW | SC | SMTI | | | | | | | |
|--------------------|-----|-----|---------|---------|-----|------|-----|----|-----|-----|-----|----|------|
| | A | 86 | 682 | 37.2 | | 44 | | | | | | | |
| EPDs | CED | BW | WW | YW | MA | CEM | SC | ST | DOC | CW | REA | YG | MARB |
| ACC | P | P+ | P+ | P | P | P | P | P | P | P | P | P | P |
| Percentile Ranking | 4% | 10% | -- | -- | 20% | 2% | 30% | -- | -- | 30% | 20% | -- | -- |



WZRK Mr Tuff Enuff 7010W

PB Bull Double Polled / Red BD: 1/29/09 NPM-1941306

ROMN TUFF ENUFF 103T { WULFS RANSOM 3059R LLLL LLL* P
 NPM-1878994 LLLL LLL* P { ROMN ROBERTA 35R LLLL LLL* P

WZRK MISS NASCAR 7010T { WULFS NASCAR G949N LLLL LLL* P
 NPF-1889458 LLLL LLL* P { WZRK MISS RAMBLER 9026H LLLL LLL* H

| PERF | CE | BW | ADJ. WW | ADJ. YW | SC | SMTI | | | | | | | |
|--------------------|-----|----|---------|---------|-----|------|----|----|-----|----|-----|----|------|
| | A | 70 | 619 | 30.6 | | 45 | | | | | | | |
| EPDs | CED | BW | WW | YW | MA | CEM | SC | ST | DOC | CW | REA | YG | MARB |
| ACC | P | P+ | P+ | P | P | P | P | P | .12 | P | P | P | P |
| Percentile Ranking | 3% | 5% | 30% | -- | 20% | 3% | -- | -- | -- | 1% | 1% | -- | -- |



WZRK Mr Tuff Enuff 7018W

PB Bull Double Polled / Black BD: 1/27/09 NPM-1941310

ROMN TUFF ENUFF 103T { WULFS RANSOM 3059R LLLL LLL* P
 NPM-1878994 LLLL LLL* P { ROMN ROBERTA 35R LLLL LLL* P

WZRK MISS RANGERIDER 7018 { WULFS RANGE RIDER 2056R LLLL LLL* P
 NPF-1889465 LLLL LLL* H { WZRK MISS TUBB 1004L LLLL LLL* P

| PERF | CE | BW | ADJ. WW | ADJ. YW | SC | SMTI | | | | | | | |
|--------------------|-----|------|---------|---------|-----|------|-----|----|-----|-----|-----|----|------|
| | A | 65 | 590 | 32.4 | | 40 | | | | | | | |
| EPDs | CED | BW | WW | YW | MA | CEM | SC | ST | DOC | CW | REA | YG | MARB |
| ACC | .16 | -.33 | .26 | .13 | .09 | .14 | .11 | | .10 | P | P | P | P |
| Percentile Ranking | 1% | 1% | -- | -- | 10% | 2% | -- | -- | -- | 20% | 30% | -- | -- |



WZRK Mr Tuff Enuff 7020W

PB Bull Double Polled / Red BD: 1/30/09 NPM-1941312

ROMN TUFF ENUFF 103T { WULFS RANSOM 3059R LLLL LLL* P
 NPM-1878994 LLLL LLL* P { ROMN ROBERTA 35R LLLL LLL* P

WZRK MISS MAINSTAY 7020T { EF MAIN STAY 541M LLLL LLL* P
 NPF-1889467 LLLL LLL* P { WZRK 7068G LLLL LLL* P

| PERF | CE | BW | ADJ. WW | ADJ. YW | SC | SMTI | | | | | | | |
|--------------------|-----|-----|---------|---------|-----|------|-----|----|-----|----|-----|----|------|
| | A | 86 | 558 | 31.6 | | 43 | | | | | | | |
| EPDs | CED | BW | WW | YW | MA | CEM | SC | ST | DOC | CW | REA | YG | MARB |
| ACC | .17 | .34 | .27 | .13 | .10 | .15 | .12 | | .12 | P | P | P | P |
| Percentile Ranking | 20% | -- | -- | -- | 20% | 10% | -- | -- | -- | -- | -- | -- | -- |



WZRK Mr Ransom 7059W

PB Bull Double Polled / Black BD: 1/28/09 NPM-1941320

WULFS RANSOM 3059R { WULFS NASA 1212N LLLL LLL* P
 NPM-1804523 LLLL LLL* P { WULFS NOBILITY 3059N LLLL LLL* P

WZRK MISS RENEGADE 7059T { ROMN RENEGADE 111R LLLL LLL* P
 NPF-1889500 LLLL LLL* P { WZRK MISS GENESIS 9023J LLLL LLL* H

| PERF | CE | BW | ADJ. WW | ADJ. YW | SC | SMTI | | | | | | | |
|--------------------|-----|-----|---------|---------|-----|------|-----|-----|-----|----|-----|----|------|
| | A | 89 | 98 | 33.4 | | 44 | | | | | | | |
| EPDs | CED | BW | WW | YW | MA | CEM | SC | ST | DOC | CW | REA | YG | MARB |
| ACC | .22 | .35 | .30 | .20 | .15 | .21 | .16 | | .17 | P | P | P | P |
| Percentile Ranking | 20% | -- | -- | -- | 20% | 2% | -- | 30% | 20% | -- | 30% | -- | -- |



WZRK Mr Tuff Enuff 7037W

PB Bull Double Polled / Red BD: 1/30/09 NPM-1941315

ROMN TUFF ENUFF 103T { WULFS RANSOM 3059R LLLL LLL* P
 NPM-1878994 LLLL LLL* P { ROMN ROBERTA 35R LLLL LLL* P

WZRK MISS LINEBACKER 7037 { OKLF LINEBACKER 341L LLLL LLL* P
 NPF-1889481 LLLL LLL* P { WZRK MISS DRYDOCK 1041L LLLL LLL* P

| PERF | CE | BW | ADJ. WW | ADJ. YW | SC | SMTI | | | | | | | |
|--------------------|-----|-----|---------|---------|-----|------|-----|----|-----|-----|-----|----|------|
| | A | 79 | 557 | 32.5 | | 44 | | | | | | | |
| EPDs | CED | BW | WW | YW | MA | CEM | SC | ST | DOC | CW | REA | YG | MARB |
| ACC | .16 | .33 | .27 | .13 | .10 | .15 | .12 | | .11 | P | P | P | P |
| Percentile Ranking | 2% | 5% | -- | -- | 20% | 10% | -- | -- | -- | 10% | 4% | -- | -- |

YEARLING BULLS



WZRK Mr TUFF ENUFF 7019W

PB Bull Double Polled / Red BD: 1/31/09 NPM-1941311

ROMN TUFF ENUFF 103T
NPM-1878994 LLLL LLL* P } WULFS RANSOM 3059R LLLL LLL* P
ROMN ROBERTA 35R LLLL LLL* P

WZRK MISS NASCAR 7019T
NPF-1889466 LLLL LLL* P } WULFS NASCAR G949N LLLL LLL* P
WZRK 7048G LLLL LLL* H

| PERF | CE | BW | ADJ. WW | ADJ. YW | SC | SMTI | | | | | | | |
|--------------------|-----|-----|---------|---------|------|------|-----|----|-----|----|-----|------|------|
| | A | 84 | 592 | | 33.5 | 46 | | | | | | | |
| EPDs | CED | BW | WW | YW | MA | CEM | SC | ST | DOC | CW | REA | YG | MARB |
| | 11 | 0.4 | 50 | 90 | 25 | 8 | 0.6 | | 28 | 48 | .84 | -0.1 | .04 |
| ACC | .16 | .33 | .27 | .13 | .10 | .15 | .11 | | .11 | P | P | P | P |
| Percentile Ranking | 20% | -- | 20% | 30% | 20% | 10% | 20% | -- | 5% | 2% | 2% | -- | 30% |



WZRK Mr TUFF ENUFF 7070W

PB Bull Double Polled / Black BD: 2/5/09 NPM-1941322

ROMN TUFF ENUFF 103T
NPM-1878994 LLLL LLL* P } WULFS RANSOM 3059R LLLL LLL* P
ROMN ROBERTA 35R LLLL LLL* P

WZRK MISS RAWHIDE 7070T
NPF-1889510 LLLL LLL* P } RAWHIDE 740L LLLL LLL* P
WZRK MISS JUSTICE 9010J LLLL LLL* H

| PERF | CE | BW | ADJ. WW | ADJ. YW | SC | SMTI | | | | | | | |
|--------------------|-----|------|---------|---------|------|------|-----|----|-----|-----|-----|-----|------|
| | A | 83 | 612 | | 34.7 | 44 | | | | | | | |
| EPDs | CED | BW | WW | YW | MA | CEM | SC | ST | DOC | CW | REA | YG | MARB |
| | 12 | -0.5 | 43 | 76 | 31 | 9 | 0.6 | | 16 | 35 | .53 | .04 | .03 |
| ACC | .16 | .33 | .26 | .13 | .09 | .14 | .11 | | .11 | P | P | P | P |
| Percentile Ranking | 20% | 20% | -- | -- | 4% | 3% | 20% | -- | -- | 20% | -- | -- | -- |



WZRK Mr NASCAR 779W

PB Bull Polled / Red BD: 2/1/09 NPM-1941252

WULFS NASCAR G949N
NPM-1740231 LLLL LLL* P } WULFS KLINT 5874K LLLL LLL* P
GFLI GORDON LADY 949J LLLL LLLX P

WZRK MISS ULTRA 7793
NPF-1224605 LLLL LLL* H } GKF CANADIAN ULTRA GKF 6U LLLL LLL* H
WZRK MISS NW RALLY 034W LLLL LLL* H

| PERF | CE | BW | ADJ. WW | ADJ. YW | SC | SMTI | | | | | | | |
|--------------------|-----|-----|---------|---------|------|------|-----|----|-----|----|-----|------|------|
| | A | 95 | 590 | | 30.9 | 44 | | | | | | | |
| EPDs | CED | BW | WW | YW | MA | CEM | SC | ST | DOC | CW | REA | YG | MARB |
| | 6 | 2.9 | 49 | 96 | 9 | 3 | 0.6 | 17 | 19 | 19 | .47 | -1.0 | -.04 |
| ACC | .19 | .36 | .31 | .21 | .21 | .18 | .17 | | .18 | P | P | P | P |
| Percentile Ranking | -- | -- | 30% | 20% | -- | -- | 20% | -- | 30% | -- | -- | -- | -- |



15



WZRK Mr TUFF ENUFF 7039W

PB Bull Double Polled / Red BD: 2/2/09 NPM-1941316

ROMN TUFF ENUFF 103T
NPM-1878994 LLLL LLL* P } WULFS RANSOM 3059R LLLL LLL* P
ROMN ROBERTA 35R LLLL LLL* P

WZRK MISS LINEBACKER 7039
NPF-1889482 LLLL LLL* P } OKLF LINEBACKER 341L LLLL LLL* P
WZRK MISS H FIELD 1055L LLLL LLL* H

| PERF | CE | BW | ADJ. WW | ADJ. YW | SC | SMTI | | | | | | | |
|--------------------|-----|------|---------|---------|------|------|-----|----|-----|----|-----|-------|------|
| | A | 85 | 592 | | 31.1 | 44 | | | | | | | |
| EPDs | CED | BW | WW | YW | MA | CEM | SC | ST | DOC | CW | REA | YG | MARB |
| | 16 | -1.0 | 45 | 81 | 31 | 9 | 0.3 | | 11 | 46 | .86 | -0.05 | .01 |
| ACC | .17 | .33 | .27 | .13 | .10 | .15 | .11 | | .11 | P | P | P | P |
| Percentile Ranking | 3% | 10% | -- | -- | 4% | 3% | -- | -- | -- | 3% | 2% | -- | -- |



WZRK Mr TUFF ENUFF 6027W

PB Bull Double Polled / Black BD: 2/6/09 NPM-1941299

ROMN TUFF ENUFF 103T
NPM-1878994 LLLL LLL* P } WULFS RANSOM 3059R LLLL LLL* P
ROMN ROBERTA 35R LLLL LLL* P

WZRK MISS NOBEL PRIZE 6027
NPF-1852812 LLLL LLL* P } WULFS NOBEL PRIZE 3861N LLLL LLL* P
WZRK MISS KABOOM 3031N LLLL LLL* P

| PERF | CE | BW | ADJ. WW | ADJ. YW | SC | SMTI | | | | | | | |
|--------------------|-----|------|---------|---------|------|------|-----|----|-----|----|-----|-------|------|
| | A | 84 | 619 | | 34.6 | 47 | | | | | | | |
| EPDs | CED | BW | WW | YW | MA | CEM | SC | ST | DOC | CW | REA | YG | MARB |
| | 13 | -0.7 | 45 | 81 | 30 | 7 | 0.5 | | 10 | 44 | .73 | -0.02 | .09 |
| ACC | P | P+ | P+ | P | P | P | P | | .13 | P | P | P | P |
| Percentile Ranking | 10% | 20% | -- | -- | 5% | 10% | 30% | -- | -- | 4% | 10% | -- | 20% |



WZRK Mr WARDEN 7033W

PB Bull Dbl. Polled / Dbl. Black BD: 2/4/09 NPM-1941314

DVFC WARDEN 233K
NPM-1578051 LLLL LLL* P } WULFS GUARDIAN 5074G LLLL LLL* P
DBRO GONE FISHING 415G LLLL LLL* P

WZRK MISS LODESTAR 7033T
NPF-1889478 LLLL LLL* P } JCL LODESTAR 27L LLLL LLL* P
WZRK MISS KEYSTONE 4016P LLLL LLL* P

| PERF | CE | BW | ADJ. WW | ADJ. YW | SC | SMTI | | | | | | | |
|--------------------|-----|-----|---------|---------|------|------|-----|-----|-----|-----|-----|------|------|
| | B | 88 | 617 | | 30.0 | 43 | | | | | | | |
| EPDs | CED | BW | WW | YW | MA | CEM | SC | ST | DOC | CW | REA | YG | MARB |
| | 6 | 2.1 | 54 | 100 | 15 | 1 | 0.3 | 20 | 27 | 39 | .67 | -0.4 | -1.1 |
| ACC | .22 | .35 | .29 | .19 | .18 | .23 | .17 | | .18 | P | P | P | P |
| Percentile Ranking | -- | -- | 10% | 10% | -- | -- | -- | 30% | 10% | 10% | 20% | -- | -- |



WZRK Mr L BACKER 7005W

PB Bull Double Polled / Black BD: 2/7/09 NPM-1941304

OKLF LINEBACKER 341L
NPM-1642600 LLLL LLL* P } VORD HALFBACK LLLL LLL* P
WULF'S ESTHER 5146 E LLLL LLL* P

WZRK MISS NOBELPRIZE 7005
NPF-1889453 LLLL LLL* P } WULFS NOBEL PRIZE 3861N LLLL LLL* P
WZRK MISS RAWHIDE 5036R LLLL LLL* P

| PERF | CE | BW | ADJ. WW | ADJ. YW | SC | SMTI | | | | | | | |
|--------------------|-----|-----|---------|---------|------|------|-----|----|-----|----|-----|------|-------|
| | A | 84 | 629 | | 30.0 | 46 | | | | | | | |
| EPDs | CED | BW | WW | YW | MA | CEM | SC | ST | DOC | CW | REA | YG | MARB |
| | 14 | 1.0 | 54 | 87 | 24 | 4 | 0.0 | | 6 | 44 | .92 | -1.8 | -0.05 |
| ACC | .23 | .35 | .30 | .21 | .19 | .23 | .18 | | .17 | P | P | P | P |
| Percentile Ranking | 10% | -- | 10% | 30% | 30% | -- | -- | -- | -- | 4% | 1% | 10% | -- |

YEARLING BULLS



WZRK Mr R RIDER 4104W

PB Bull Dbl. Polled / Dbl. Black BD: 2/10/09 NPM-1941282

WULFS RANGE RIDER 2056R
NPM-1808947 LLLL LLL* P { RGMA NIGHT RIDER 73N LLLL LLL* P
WULFS MAGGIE 2056M LLLL LLL* P

WZRK MISS RAWHIDE 4104P
NPF-1810117 LLLL LLL* P { RAWHIDE 740L LLLL LLL* P
WZRK MISS JUSTICE 9009J LLLL LLL* P

| PERF | CE | BW | ADJ. WW | | | ADJ. YW | | | SC | SMTI | | | |
|--------------------|-----|-----|---------|-----|-----|---------|-----|----|-----|------|-----|-----|------|
| | A | 105 | 640 | | | 32.2 | | | 44 | | | | |
| EPDs | CED | BW | WW | YW | MA | CEM | SC | ST | DOC | CW | REA | YG | MARB |
| ACC | .18 | .35 | .29 | .18 | .13 | .17 | .16 | | .15 | P | P | P | P |
| Percentile Ranking | -- | -- | 10% | 20% | 30% | -- | -- | -- | 20% | 30% | 20% | 20% | -- |



WZRK Mr TUFF ENUFF 7017W

PB Bull Double Polled / Red BD: 2/11/09 NPM-1941309

ROMN TUFF ENUFF 103T
NPM-1878994 LLLL LLL* P { WULFS RANSOM 3059R LLLL LLL* P
ROMN ROBERTA 35R LLLL LLL* P

WZRK MISS RENEGADE 7017T
NPF-1889464 LLLL LLL* P { ROMN RENEGADE 111R LLLL LLL* P
WZRK MISS GENESIS 1017L LLLL LLL H

| PERF | CE | BW | ADJ. WW | | | ADJ. YW | | | SC | SMTI | | | |
|--------------------|-----|-----|---------|-----|----|---------|----|----|-----|------|-----|----|------|
| | A | 87 | 687 | | | 35.1 | | | 46 | | | | |
| EPDs | CED | BW | WW | YW | MA | CEM | SC | ST | DOC | CW | REA | YG | MARB |
| ACC | P | P+ | P+ | P | P | P | P | | .10 | P | P | P | P |
| Percentile Ranking | 10% | 30% | 20% | 30% | 3% | 2% | - | -- | 30% | 20% | 10% | -- | -- |



WZRK Mr L BACKER 7003W

PB Bull Double Polled / Red BD: 2/12/09 NPM-1941303

OKLF LINEBACKER 341L
NPM-1642600 LLLL LLL* P { VORD HALFBACK LLLL LLL* P
WULF'S ESTHER 5146 E LLLL LLL* P

WZRK MISS WARDEN 7003T
NPF-1889451 LLLL LLL* P { DVFC WARDEN 233K LLLL LLL* P
WZRK MISS GENESIS 5051R LLLL LLL* H

| PERF | CE | BW | ADJ. WW | | | ADJ. YW | | | SC | SMTI | | | |
|--------------------|-----|----|---------|----|----|---------|----|-----|-----|------|-----|-----|------|
| | A | 95 | 697 | | | 32.5 | | | 47 | | | | |
| EPDs | CED | BW | WW | YW | MA | CEM | SC | ST | DOC | CW | REA | YG | MARB |
| ACC | P | P+ | P+ | P | P | P | P | | 20 | 12 | 43 | .92 | -.18 |
| Percentile Ranking | 4% | -- | 1% | 4% | -- | 20% | -- | 30% | -- | 4% | 1% | 10% | -- |



WZRK Mr SHOP TALK 3029W

PB Bull Double Polled / Black BD: 2/16/09 NPM-1941273

WULFS SHOP TALK 2332S
NPM-1838716 LLLL LLL* P { CARROUSELS PURE POWER LLLL LLL* P
WULFS MYRLENE 2332M LLLL LLL* P

WZRK MISS KUDOS 3029N
NPF-1736967 LLLL LLL* P { WULFS KUDOS 5519K LLLL LLL* P
WZRK MISS THRIFTY 444B LLLL LLL* P

| PERF | CE | BW | ADJ. WW | | | ADJ. YW | | | SC | SMTI | | | |
|--------------------|-----|-----|---------|-----|-----|---------|-----|----|-----|------|-----|------|------|
| | A | 89 | 579 | | | 33.7 | | | 44 | | | | |
| EPDs | CED | BW | WW | YW | MA | CEM | SC | ST | DOC | CW | REA | YG | MARB |
| ACC | .14 | 1.0 | .46 | .80 | .13 | .6 | 0.7 | | 20 | 29 | .69 | -.19 | -.04 |
| Percentile Ranking | 10% | -- | -- | -- | -- | 20% | 20% | -- | 30% | 30% | 20% | 10% | -- |



WZRK Mr NASCAR 4107W

PB Bull Double Polled / Red BD: 2/16/09 NPM-1941284

WULFS NASCAR G949N
NPM-1740231 LLLL LLL* P { WULFS KLINT 5874K LLLL LLL* P
GFLLI GORDON LADY 949J LLLL LLLX P

WZRK MISS RAWHIDE 4107P
NPF-1810120 LLLL LLL* P { RWHIDE 740L LLLL LLL* P
WZRK MISS F HAND 8049H LLLL LLL* P

| PERF | CE | BW | ADJ. WW | | | ADJ. YW | | | SC | SMTI | | | |
|--------------------|-----|-----|---------|-----|-----|---------|-----|-----|-----|------|-----|----|------|
| | A | 96 | 599 | | | 31.9 | | | 42 | | | | |
| EPDs | CED | BW | WW | YW | MA | CEM | SC | ST | DOC | CW | REA | YG | MARB |
| ACC | .19 | .35 | .30 | .19 | .18 | .18 | .17 | | .18 | P | P | P | P |
| Percentile Ranking | -- | -- | 30% | 30% | -- | -- | -- | 30% | 10% | 30% | 30% | -- | -- |



WZRK Mr NASCAR 4106W

PB Bull Double Polled / Red BD: 2/21/09 NPM-1941283

WULFS NASCAR G949N
NPM-1740231 LLLL LLL* P { WULFS KLINT 5874K LLLL LLL* P
GFLLI GORDON LADY 949J LLLL LLLX P

WZRK MISS RAWHIDE 4106P
NPF-1810119 LLLL LLL* P { RAWHIDE 740L LLLL LLL* P
WZRK MR GENESIS 0034K LLLL LLL* P

| PERF | CE | BW | ADJ. WW | | | ADJ. YW | | | SC | SMTI | | | |
|--------------------|-----|-----|---------|-----|-----|---------|-----|----|-----|------|-----|----|------|
| | A | 104 | 629 | | | 33.8 | | | 45 | | | | |
| EPDs | CED | BW | WW | YW | MA | CEM | SC | ST | DOC | CW | REA | YG | MARB |
| ACC | .19 | .35 | .30 | .20 | .18 | .18 | .16 | | .17 | P | P | P | P |
| Percentile Ranking | -- | -- | 10% | 20% | -- | -- | 30% | -- | 2% | -- | 30% | -- | -- |



YEARLING BULLS

23

WZRK Mr Nascar 3042W

PB Bull Double Polled / Black BD: 2/23/09 NPM-1941276

WULFS NASCAR G949N } WULFS KLINT 5874K LLLL LLL* P
 NPM-1740231 LLLL LLL* P } GFLI GORDON LADY 949J LLLL LLLX P

CUWI MISS KUDOS 3042N } WULFS KUDOS 5519K LLLL LLL* P
 NPF-1736888 LLLL LLL* P } CUWI 7023G LLLL LLL* H

| PERF | CE | BW | ADJ. WW | ADJ. YW | SC | SMTI | | | | | | | |
|--------------------|-----|-----|---------|---------|------|------|-----|----|-----|-----|-----|-----|------|
| | A | 83 | 631 | | 30.0 | 44 | | | | | | | |
| EPDs | CED | BW | WW | YW | MA | CEM | SC | ST | DOC | CW | REA | YG | MARB |
| ACC | .20 | .35 | .30 | .20 | .19 | .19 | .18 | | .18 | P | P | P | P |
| Percentile Ranking | 30% | -- | 20% | 20% | -- | -- | 20% | -- | 20% | 20% | 10% | 20% | -- |



24

WZRK Mr Rawhide 9060W

PB Bull Polled / Black BD: 2/25/09 NPM-1941382

RAWHIDE 740L } L7 BLACK DIAMOND 766G LLLL LLL* P
 NPM-1655222 LLLL LLLL* P } NP MISS TYGER 187E LLLL LLL* P

WZRK MISS FANFARE 9060J } WULFS FANFARE 4055F LLLL LLL* S
 NPF-1509309 LLLL LLL* H } WZRK MISS TED 567C LLLL LLL* H

| PERF | CE | BW | ADJ. WW | ADJ. YW | SC | SMTI | | | | | | | |
|--------------------|-----|-----|---------|---------|------|------|-----|-----|-----|----|-----|------|------|
| | A | 92 | 679 | | 33.0 | 43 | | | | | | | |
| EPDs | CED | BW | WW | YW | MA | CEM | SC | ST | DOC | CW | REA | YG | MARB |
| ACC | 10 | 1.8 | 42 | 68 | 27 | 6 | 0.4 | 21 | 15 | 5 | .27 | -.04 | .01 |
| Percentile Ranking | 30% | -- | -- | -- | 20% | 20% | -- | 20% | -- | -- | -- | -- | -- |

25

WZRK Mr Rawhide 3030W

PB Bull Polled / Red BD: 2/27/09 NPM-1941274

RAWHIDE 740L } L7 BLACK DIAMOND 766G LLLL LLL* P
 NPM-1655222 LLLL LLL* P } NP MISS TYGER 187E LLLL LLL* P

WZRK MISS GENESIS 3030N } WZRK GENESIS 532E LLLL LLLL H
 NPF-1736968 LLLL LLLL H } WZRK MISS TED 680D LLLL LLLL H

| PERF | CE | BW | ADJ. WW | ADJ. YW | SC | SMTI | | | | | | | |
|--------------------|-----|-----|---------|---------|------|------|-----|----|-----|-----|-----|------|------|
| | A | 95 | 609 | | 31.5 | 44 | | | | | | | |
| EPDs | CED | BW | WW | YW | MA | CEM | SC | ST | DOC | CW | REA | YG | MARB |
| ACC | 5 | 4.5 | 50 | 76 | 24 | 3 | 0.2 | 19 | 11 | 25 | .76 | -.25 | -.08 |
| Percentile Ranking | -- | -- | 20% | -- | 30% | -- | -- | -- | -- | 10% | 1% | -- | -- |

26

WZRK Mr Nascar 0041W

PB Bull Double Polled / Red BD: 3/2/09 NPM-1941258

WULFS NASCAR G949N } WULFS KLINT 5874K LLLL LLL* P
 NPM-1740231 LLLL LLL* P } GFLI GORDON LADY 949J LLLL LLLX P

WZRK MISS GALVESTON 0041K } RPLF GALVSTON 416G LLLL LLL* P
 NPF-1602282 LLLL LLL* P } WZRK MISS TED 257Y LLLL LLLI H

| PERF | CE | BW | ADJ. WW | ADJ. YW | SC | SMTI | | | | | | | |
|--------------------|-----|-----|---------|---------|------|------|-----|----|-----|-----|-----|------|------|
| | A | 102 | 634 | | 31.9 | 44 | | | | | | | |
| EPDs | CED | BW | WW | YW | MA | CEM | SC | ST | DOC | CW | REA | YG | MARB |
| ACC | 5 | 3.9 | 56 | 97 | 15 | 4 | 0.5 | 18 | 19 | 32 | .67 | -.12 | -.09 |
| Percentile Ranking | -- | -- | 10% | 20% | -- | -- | 30% | -- | 30% | 20% | 20% | 30% | -- |

27

WZRK Mr Nascar 8042W

PB Bull Polled / Red BD: 3/4/09 NPM-1941326

WULFS NASCAR G949N } WULFS KLINT 5874K LLLL LLL* P
 NPM-1740231 LLLL LLL* P } GFLI GORDON LADY 949J LLLL LLLX P

WZRK MISS FLINER 8042H } WULFS FREIGHTLINER 3597F LLLL LLL* P
 NPF-1445713 LLLL LLL* H } WZRK MISS THRIFTY 312A LLLL LLL* H

| PERF | CE | BW | ADJ. WW | ADJ. YW | SC | SMTI | | | | | | | |
|--------------------|-----|-----|---------|---------|------|------|-----|----|-----|-----|-----|------|------|
| | A | 102 | 616 | | 31.9 | 43 | | | | | | | |
| EPDs | CED | BW | WW | YW | MA | CEM | SC | ST | DOC | CW | REA | YG | MARB |
| ACC | .21 | .36 | .48 | .91 | 16 | 2 | 0.1 | 18 | 14 | 27 | .77 | -.24 | -.09 |
| Percentile Ranking | -- | -- | 30% | 30% | -- | -- | -- | -- | -- | 30% | 5% | 2% | -- |

28

WZRK Mr T C 9033W

PB Bull Scurs / Double Black BD: 3/4/09 NPM-1941357

LVLS TOP CRITERIA 8862P } COLE WOLF HUNT LLLL LLL* P
 NPM-1775475 LLLL LLL* P } LVLS8862M LLLL LLLI P

WZRK MISS GUARDIAN 9033J } WULFS GUARDIAN 5074G LLLL LLL* P
 NPF-1509252 LLLL LLL* H } OAKM LADY MAUREEN 997C LLLL LLLL H

| PERF | CE | BW | ADJ. WW | ADJ. YW | SC | SMTI | | | | | | | |
|--------------------|-----|-----|---------|---------|------|------|------|----|-----|----|-----|------|------|
| | A | 88 | 578 | | 30.0 | 41 | | | | | | | |
| EPDs | CED | BW | WW | YW | MA | CEM | SC | ST | DOC | CW | REA | YG | MARB |
| ACC | 13 | 0.5 | 43 | 81 | 24 | 4 | -0.1 | 19 | 15 | 18 | .82 | -.17 | -.10 |
| Percentile Ranking | 10% | 30% | -- | -- | 30% | -- | -- | -- | -- | -- | 3% | 20% | -- |

29

WZRK Mr M T O 9102W

PB Bull Double Polled / Red BD: 3/4/09 NPM-1941402

ROMN MADE TO ORDER } ROMN JUSTICE LLLL LLL* P
 NPM-1684843 LLLL LLL* P } ROMN MISS THICK 34K LLLL LLL* P

WZRK MISS FORTUNE COOKIE } SLVL FORTUNE COOKIE 6187F LLLL LLL* P
 NPF-1509204 LLLL LLL* P } WZRK 7013G LLLL LLL* P

| PERF | CE | BW | ADJ. WW | ADJ. YW | SC | SMTI | | | | | | | |
|--------------------|-----|-----|---------|---------|------|------|-----|-----|-----|-----|-----|------|------|
| | A | 92 | 560 | | 34.1 | 43 | | | | | | | |
| EPDs | CED | BW | WW | YW | MA | CEM | SC | ST | DOC | CW | REA | YG | MARB |
| ACC | 11 | 2.0 | 46 | 85 | 13 | 11 | 0.8 | 15 | 21 | 21 | .76 | -.24 | -.08 |
| Percentile Ranking | 20% | -- | -- | -- | -- | 10% | -- | 30% | -- | 10% | 2% | -- | -- |

YEARLING BULLS



WZRK Mr Nascar 1041W

PB Bull Double Polled / Red BD: 3/5/09 NPM-1941265

| | | |
|--|--|--|
| WULFS NASCAR G949N NPM-1740231 | } WULFS KLINT 5874K GFLI GORDON LADY 949J | LLLL LLL* P |
| WZRK MISS DRYDOCK 1041L NPF-1644484 | | } MINE POLLED DRYDOCK 004H WZRK MISS THISTLE 531C |

| PERF | CE | BW | ADJ. WW | ADJ. YW | SC | SMTI | | | | | | | |
|--------------------|-----|-----|---------|---------|------|------|-----|-----|-----|----|-----|----|------|
| | A | 106 | 680 | | 31.8 | 46 | | | | | | | |
| EPDs | CED | BW | WW | YW | MA | CEM | SC | ST | DOC | CW | REA | YG | MARB |
| ACC | .21 | .36 | .31 | .21 | .21 | .21 | .18 | .18 | .20 | P | P | P | P |
| Percentile Ranking | -- | -- | 2% | 2% | -- | -- | -- | -- | 30% | -- | 20% | 4% | -- |



WZRK Mr Ransom 2036W

PB Bull Polled / Red BD: 3/11/09 NPM-1941269

| | | |
|---------------------------------------|--|--|
| WULFS RANSOM 3059R NPM-1804523 | } WULFS NASA 1212N WULFS NOBILITY 3059N | LLLL LLL* P LLLL LLL* P |
| WZRK MISS HFIELD 2036M NPF-1695500 | | } RPLF HOLYFIELD 216H WZRK MISS STETSON 9046J |

| PERF | CE | BW | ADJ. WW | ADJ. YW | SC | SMTI | | | | | | | |
|--------------------|-----|-----|---------|---------|------|------|-----|-----|-----|----|-----|-----|------|
| | A | 98 | 667 | | 33.1 | 43 | | | | | | | |
| EPDs | CED | BW | WW | YW | MA | CEM | SC | ST | DOC | CW | REA | YG | MARB |
| ACC | .20 | .36 | .30 | .21 | .18 | .20 | .20 | .18 | .18 | P | P | P | P |
| Percentile Ranking | 30% | 30% | -- | -- | 1% | 3% | -- | -- | 3% | -- | 20% | 20% | -- |



WZRK Mr R Rider 8039W

PB Bull Horned / Red BD: 3/5/09 NPM-1941325

| | | |
|--|--|--|
| WULFS RANGE RIDER 2056R NPM-1808947 | } RGMA NIGHT RIDER 73N WULFS MAGGIE 2056M | LLLL LLL* P LLLL LLL* P |
| WZRK MISS THISTLE 8038H NPF-1445710 | | } JCL THISTLE MISS MERVA 010X AD 870# |

| PERF | CE | BW | ADJ. WW | ADJ. YW | SC | SMTI | | | | | | | |
|--------------------|-----|-----|---------|---------|------|------|-----|-----|-----|----|-----|----|------|
| | A | 95 | 725 | | 34.4 | 43 | | | | | | | |
| EPDs | CED | BW | WW | YW | MA | CEM | SC | ST | DOC | CW | REA | YG | MARB |
| ACC | .18 | .36 | .30 | .19 | .17 | .18 | .18 | .16 | .16 | P | P | P | P |
| Percentile Ranking | -- | -- | 20% | -- | 20% | -- | -- | -- | -- | -- | 20% | 2% | -- |



WZRK Mr M T O 1179W

PB Bull Double Polled / Red BD: 3/11/09 NPM-1941267

| | | |
|--|---------------------------------------|---|
| ROMN MADE TO ORDER NPM-1684843 | } ROMN JUSTICE ROMN MISS THICK 34K | LLLL LLL* P LLLL LLL* P |
| DVFC BLACK LEADER 1179L NPF-1670543 | | } SLVL BLACK OXEN 190D DVFC INSPIRATION 923J |

| PERF | CE | BW | ADJ. WW | ADJ. YW | SC | SMTI | | | | | | | |
|--------------------|-----|-----|---------|---------|------|------|-----|-----|-----|----|-----|-----|------|
| | A | 90 | 627 | | 31.7 | 42 | | | | | | | |
| EPDs | CED | BW | WW | YW | MA | CEM | SC | ST | DOC | CW | REA | YG | MARB |
| ACC | .20 | .35 | .30 | .19 | .20 | .19 | .18 | .17 | .18 | P | P | P | P |
| Percentile Ranking | 20% | -- | 10% | 20% | -- | 3% | 10% | -- | -- | -- | 20% | 20% | -- |



WZRK Mr N Prize 680W

PB Bull Polled / Black BD: 3/8/09 NPM-1941246

| | | |
|--|---|--|
| WULFS NOBEL PRIZE 3861N NPM-1739610 | } COLE WULF HUNT WULF'S CASUAL 3161C | LLLL LLL* P LLLL LLL* P |
| WZRK MISS TED 680D NPF-1253626 | | } TEXS RANGER TED MISS YORK BRL 15Y |

| PERF | CE | BW | ADJ. WW | ADJ. YW | SC | SMTI | | | | | | | |
|--------------------|-----|-----|---------|---------|------|------|-----|-----|-----|-----|-----|----|------|
| | A | 89 | 626 | | 30.0 | 46 | | | | | | | |
| EPDs | CED | BW | WW | YW | MA | CEM | SC | ST | DOC | CW | REA | YG | MARB |
| ACC | .23 | .37 | .32 | .22 | .24 | .23 | .21 | .21 | .21 | P | P | P | P |
| Percentile Ranking | 30% | -- | 20% | -- | 20% | 30% | -- | -- | -- | 20% | 1% | 1% | -- |



WZRK Mr N Prize 7013W

PB Bull Double Polled / Black BD: 3/15/09 NPM-1941308

| | | |
|--|---|---|
| WULFS NOBEL PRIZE 3861N NPM-1739610 | } COLE WULF HUNT WULF'S CASUAL 3161C | LLLL LLL* P LLLL LLL* P |
| WZRK 7013G NPF-1363233 | | } WULFS EXLOSION 0184E WZRK MISS N.W. RALLY 939V |

| PERF | CE | BW | ADJ. WW | ADJ. YW | SC | SMTI | | | | | | | |
|--------------------|-----|-----|---------|---------|------|------|-----|-----|-----|----|-----|----|------|
| | A | 97 | 567 | | 30.1 | 45 | | | | | | | |
| EPDs | CED | BW | WW | YW | MA | CEM | SC | ST | DOC | CW | REA | YG | MARB |
| ACC | .22 | .37 | .32 | .22 | .23 | .21 | .22 | .21 | .21 | P | P | P | P |
| Percentile Ranking | -- | -- | -- | -- | -- | -- | -- | 30% | 2% | -- | 2% | 1% | -- |



WZRK Mr Ransom 3023W

PB Bull Double Polled / Red BD: 3/8/09 NPM-1941272

| | | |
|--|--|--|
| WULFS RANSOM 3059R NPM-1804523 | } WULFS NASA 1212N WULFS NOBILITY 3059N | LLLL LLL* P LLLL LLL* P |
| WZRK MISS WULF HUNT 3023N NPF-1736961 | | } COLE WULF HUNT WZRK MISS THISTLE 775E |

| PERF | CE | BW | ADJ. WW | ADJ. YW | SC | SMTI | | | | | | | |
|--------------------|-----|-----|---------|---------|------|------|-----|-----|-----|----|-----|-----|------|
| | A | 93 | 596 | | 34.2 | 44 | | | | | | | |
| EPDs | CED | BW | WW | YW | MA | CEM | SC | ST | DOC | CW | REA | YG | MARB |
| ACC | .20 | .36 | .31 | .21 | .18 | .19 | .18 | .22 | .18 | P | P | P | P |
| Percentile Ranking | 20% | 10% | -- | -- | -- | 10% | -- | 10% | -- | -- | 20% | 30% | -- |

Please bring this catalog with you to the sale!

YEARLING BULLS



37

W37EK

WZRK Mr Nascar 9045W

PB Bull Polled / Red BD: 3/20/09 NPM-1941367

WULFS NASCAR G949N { WULFS KLINT 5874K LLLL LLL* P
 NPM-1740231 LLLL LLL* P { GFLI GORDON LADY 949J LLLL LLLX P
 WZRK MISS STETSON 9045J { GV MR POLLED STETSON 179B LLLL LLL* P
 NPF-1509278 LLLL LLL* H { WZRK MISS D NATIVE 739E LLLL LLL* H

| PERF | CE | BW | ADJ. WW | ADJ. YW | SC | SMTI | | | | | | | |
|--------------------|-----|-----|---------|---------|------|------|-----|----|-----|-----|-----|-----|------|
| | A | 101 | 659 | | 31.0 | 44 | | | | | | | |
| EPDs | CED | BW | WW | YW | MA | CEM | SC | ST | DOC | CW | REA | YG | MARB |
| ACC | P | P+ | P+ | P | P | P | P | P | P | P | P | P | P |
| Percentile Ranking | -- | -- | 5% | 20% | -- | -- | 10% | -- | -- | 20% | 30% | 30% | -- |

W38EK

WZRK Mr Nascar 774W

PB Bull Polled / Red BD: 3/22/09 NPM-1941250

WULFS NASCAR G949N { WULFS KLINT 5874K LLLL LLL* P
 NPM-1740231 LLLL LLL* P { GFLI GORDON LADY 949J LLLL LLLX P
 WZRK MISS ULTRA 774E { GKF CANADIANULTRA GKF 6U LLLL LLL* H
 NPF-1224593 LLLL LLL* H { WZRK MISS PHOTO COPY 248Y LLLL LLLI H

| PERF | CE | BW | ADJ. WW | ADJ. YW | SC | SMTI | | | | | | | |
|--------------------|-----|-----|---------|---------|------|------|-----|-----|-----|----|-----|----|------|
| | A | 96 | 610 | | 33.6 | 43 | | | | | | | |
| EPDs | CED | BW | WW | YW | MA | CEM | SC | ST | DOC | CW | REA | YG | MARB |
| ACC | .20 | .37 | .31 | .22 | .22 | .19 | .20 | .19 | P | P | P | P | P |
| Percentile Ranking | -- | -- | 30% | 20% | -- | -- | 20% | -- | -- | -- | -- | -- | -- |

W39EK

WZRK Mr Top Criteria 0011

PB Bull Dbl. Polled / Dbl. Black BD: 3/22/09 NPM-1941254

LVLS TOP CRITERIA 8862P { COLE WOLF HUNT LLLL LLL* P
 NPM-1775475 LLLL LLL* P { LVLS8862M LLLL LLLI P
 WZRK MISS BLACKMAIL 0011K { CABIN CREEK BLACKMAIL 69F LLLL LLL* S
 NPF-1602255 LLLL LLL* P { WZRK 7025G LLLL LLL* P

| PERF | CE | BW | ADJ. WW | ADJ. YW | SC | SMTI | | | | | | | |
|--------------------|-----|-----|---------|---------|------|------|-----|-----|-----|----|-----|----|------|
| | A | 85 | 590 | | 30.8 | 43 | | | | | | | |
| EPDs | CED | BW | WW | YW | MA | CEM | SC | ST | DOC | CW | REA | YG | MARB |
| ACC | .17 | .36 | .30 | .19 | .15 | .15 | .17 | .12 | P | P | P | P | P |
| Percentile Ranking | 20% | -- | -- | -- | 30% | -- | -- | -- | -- | 5% | 20% | -- | -- |

W40EK

WZRK Mr RANGERIDER 3044W

PB Bull Double Polled / Red BD: 3/24/09 NPM-1941277

WULFS RANGE RIDER 2056R { RGMMA NIGHT RIDER 73N LLLL LLL* P
 NPM-1808947 LLLL LLL* P { WULFS MAGGIE 2056M LLLL LLL* P
 WZRK MISS KUDOS 3044N { WULFS KUDOS 5519K LLLL LLL* P
 NPF-1736979 LLLL LLL* P { WZRK MISS RAMBLER 8029H LLLL LLL* H

| PERF | CE | BW | ADJ. WW | ADJ. YW | SC | SMTI | | | | | | | |
|--------------------|-----|-----|---------|---------|------|------|-----|-----|-----|-----|-----|-----|------|
| | A | 97 | 632 | | 32.5 | 43 | | | | | | | |
| EPDs | CED | BW | WW | YW | MA | CEM | SC | ST | DOC | CW | REA | YG | MARB |
| ACC | .18 | .35 | .30 | .20 | .15 | .17 | .18 | .15 | P | P | P | P | P |
| Percentile Ranking | -- | -- | 10% | 20% | -- | -- | -- | -- | -- | 20% | 10% | 20% | -- |



41

W41EK

WZRK Mr Nascar 0019W

PB Bull Double Polled / Black BD: 3/25/09 NPM-1941255

WULFS NASCAR G949N { WULFS KLINT 5874K LLLL LLL* P
 NPM-1740231 LLLL LLL* P { GFLI GORDON LADY 949J LLLL LLLX P
 WZRK MISS FLINER 0019K { WULFS FREIGHTLINER 3597F LLLL LLL* P
 NPF-1602263 LLLL LLL* P { WZRK MISS NATIVE 714E LLLL LLLI P

| PERF | CE | BW | ADJ. WW | ADJ. YW | SC | SMTI | | | | | | | |
|--------------------|-----|----|---------|---------|------|------|----|----|-----|----|-----|-----|------|
| | A | 94 | 661 | | 32.9 | 43 | | | | | | | |
| EPDs | CED | BW | WW | YW | MA | CEM | SC | ST | DOC | CW | REA | YG | MARB |
| ACC | P | P+ | P+ | P | P | P | P | P | P | P | P | P | P |
| Percentile Ranking | -- | -- | 20% | 20% | -- | -- | -- | -- | 20% | -- | -- | 20% | -- |

W42EK

WZRK Mr Responder 1006W

PB Bull Polled / Black BD: 3/26/09 NPM-1941262

KAJO RESPONDER 120R { JCL LODESTAR 27L LLLL LLL* P
 NPM-1813144 LLLL LLL* P { KAJO SHERYL SWOOPS 11H LLLL LLL* P
 WZRK MISS TUBB 1006L { KOLT DURANGO 5H LLLL LLL* P
 NPF-1644455 LLLL LLL* H { WZRK MISS JUSTICE 9030J LLLL LLL* H

| PERF | CE | BW | ADJ. WW | ADJ. YW | SC | SMTI | | | | | | | |
|--------------------|-----|-----|---------|---------|------|------|-----|-----|-----|-----|-----|----|------|
| | A | 93 | 600 | | 33.1 | 43 | | | | | | | |
| EPDs | CED | BW | WW | YW | MA | CEM | SC | ST | DOC | CW | REA | YG | MARB |
| ACC | .19 | .36 | .30 | .19 | .19 | .16 | .16 | .17 | P | P | P | P | P |
| Percentile Ranking | -- | -- | 30% | -- | -- | 20% | 20% | -- | 20% | 30% | -- | -- | -- |

YEARLING BULLS



WZRK Mr RAWHIDE 1021W

PB Bull Double Polled / Black BD: 3/26/09 NPM-1941263

RAWHIDE 740L
NPM-1655222 LLLL LLL* P { L7 BLACK DIAMOND 766G LLLL LLL* P
NP MISS TYGER 187E LLLL LLL* P

WZRK MISS F LINER 1021L
NPF-1644469 LLLL LLL* P { WULFS FRIGHTLINER 3597F LLLL LLL* P
MISS MERVA 047X AD LLLL LLL* H

| PERF | CE | BW | ADJ. WW | | | ADJ. YW | | | SC | SMTI | | | |
|--------------------|-----|-----|---------|-----|-----|---------|-----|-----|-----|------|-----|-----|------|
| | A | 92 | 621 | | | 32.1 | | | | 38 | | | |
| EPDs | CED | BW | WW | YW | MA | CEM | SC | ST | DOC | CW | REA | YG | MARB |
| 6 | 2.7 | 37 | 67 | 25 | 2 | 0.2 | 20 | 15 | 13 | .45 | -10 | -11 | |
| ACC | .18 | .36 | .30 | .19 | .18 | .16 | | .17 | P | P | P | P | P |
| Percentile Ranking | -- | -- | -- | 30% | -- | -- | 30% | -- | -- | -- | -- | -- | -- |



WZRK Mr NOBEL PRIZE 0036W

PB Bull Double Polled / Black BD: 3/31/09 NPM-1941257

WULFS NOBEL PRIZE 3861N
NPM-1739610 LLLL LLL* P { COLE WULF HUNT LLLL LLL* P
WULF'S CASUAL 3161C LLLL LLL* P

WZRK MISS STETSON 0036K
NPF-1602277 LLLL LLL* P { GV MR POLLED STETSON 179B LLLL LLL* P
WZRK MISS WONDERBOY 465B LLLL LLL* H

| PERF | CE | BW | ADJ. WW | | | ADJ. YW | | | SC | SMTI | | | |
|--------------------|-----|-----|---------|-----|-----|---------|-----|-----|-----|------|-----|-----|------|
| | A | 94 | 635 | | | 30.1 | | | | 45 | | | |
| EPDs | CED | BW | WW | YW | MA | CEM | SC | ST | DOC | CW | REA | YG | MARB |
| 5 | 2.4 | 45 | 71 | 24 | 0 | 0.3 | 20 | 20 | 24 | .75 | -17 | .02 | |
| ACC | .21 | .36 | .31 | .22 | .22 | .21 | .20 | .20 | P | P | P | P | P |
| Percentile Ranking | -- | -- | -- | 30% | -- | -- | 30% | 30% | -- | 10% | 20% | -- | -- |



WZRK Mr RANGERIDER 9049W

PB Bull Dbl. Polled / Dbl. Black BD: 3/28/09 NPM-1941371

WULFS RANGE RIDER 2056R
NPM-1808947 LLLL LLL* P { RGMA NIGHT RIDER 73N LLLL LLL* P
WULFS MAGGIE 2056M LLLL LLL* P

WZRK MISS F. LINER 9049J
NPF-1509283 LLLL LLL* P { WULFS FREIGHTLINER 3597F LLLL LLL* P
WZRK MISS TED 643D LLLL LLL* P

| PERF | CE | BW | ADJ. WW | | | ADJ. YW | | | SC | SMTI | | | |
|--------------------|-----|-----|---------|-----|-----|---------|-----|-----|-----|------|-----|----|------|
| | A | 82 | 608 | | | 34.0 | | | | 38 | | | |
| EPDs | CED | BW | WW | YW | MA | CEM | SC | ST | DOC | CW | REA | YG | MARB |
| 12 | 1.3 | 39 | 75 | 24 | 5 | -0.1 | 13 | 19 | .65 | -16 | -13 | | |
| ACC | .19 | .36 | .30 | .19 | .17 | .18 | .19 | .16 | P | P | P | P | P |
| Percentile Ranking | 20% | -- | -- | 30% | 30% | -- | -- | -- | 20% | 20% | -- | -- | -- |



WZRK Mr RANGERIDER 5013W

PB Bull Dbl. Polled / Dbl. Black BD: 4/2/09 NPM-1941286

WULFS RANGE RIDER 2056R
NPM-1808947 LLLL LLL* P { RGMA NIGHT RIDER 73N LLLL LLL* P
WULFS MAGGIE 2056M LLLL LLL* P

WZRK MISS LODESTAR 5013R
NPF-1819304 LLLL LLL* P { JCL LODESTAR 27L LLLL LLL* P
CUWI MISS ROUGHRIDER 553C LLLL LLL* H

| PERF | CE | BW | ADJ. WW | | | ADJ. YW | | | SC | SMTI | | | |
|--------------------|-----|-----|---------|-----|-----|---------|-----|-----|-----|------|-----|----|------|
| | A | 97 | 636 | | | 35.4 | | | | 43 | | | |
| EPDs | CED | BW | WW | YW | MA | CEM | SC | ST | DOC | CW | REA | YG | MARB |
| 10 | 2.6 | 52 | 97 | 24 | 6 | 0.1 | 15 | 28 | .65 | -10 | -09 | | |
| ACC | .18 | .35 | .29 | .19 | .14 | .17 | .18 | .15 | P | P | P | P | P |
| Percentile Ranking | 30% | -- | 20% | 20% | 30% | 20% | -- | -- | 20% | 20% | -- | -- | -- |



WZRK Mr RANGE RIDER 2040W

PB Bull Horned / Black BD: 3/30/09 NPM-1941270

WULFS RANGE RIDER 2056R
NPM-1808947 LLLL LLL* P { RGMA NIGHT RIDER 73N LLLL LLL* P
WULFS MAGGIE 2056M LLLL LLL* P

WZRK MISS TUBB 2040M
NPF-1695503 LLLL LLL* P { TUBB SEVEN'S DOWN 610J LLLL LLL* P
WZRK MISS THISTLE 8038H LLLL LLL* H

| PERF | CE | BW | ADJ. WW | | | ADJ. YW | | | SC | SMTI | | | |
|--------------------|------|-----|---------|-----|-----|---------|-----|-----|-----|------|-----|-----|------|
| | A | 85 | 600 | | | 31.8 | | | | 37 | | | |
| EPDs | CED | BW | WW | YW | MA | CEM | SC | ST | DOC | CW | REA | YG | MARB |
| 12 | -0.8 | 33 | 66 | 22 | 5 | -0.2 | 23 | 5 | .46 | -18 | -13 | | |
| ACC | .17 | .35 | .30 | .19 | .15 | .16 | .17 | .14 | P | P | P | P | P |
| Percentile Ranking | 20% | 20% | -- | -- | -- | 30% | -- | -- | 20% | -- | -- | 10% | -- |



WZRK Mr RAWHIDE 0064W

PB Bull Polled / Red BD: 4/5/09 NPM-1941260

RAWHIDE 740L
NPM-1655222 LLLL LLL* P { L7 BLACK DIAMOND 766G LLLL LLL* P
NP MISS TYGER 187E LLLL LLL* P

WZRK MISS 730G 0064K
NPF-1602304 LLLL LLL* H { WZRK GIBRALTER 730G LLLL LLL* H
WZRK MISS WESTERNER 545C LLLL LLL* S

| PERF | CE | BW | ADJ. WW | | | ADJ. YW | | | SC | SMTI | | | |
|--------------------|-----|-----|---------|-----|-----|---------|-----|-----|-----|------|-----|-----|------|
| | A | 92 | 662 | | | 30.3 | | | | 43 | | | |
| EPDs | CED | BW | WW | YW | MA | CEM | SC | ST | DOC | CW | REA | YG | MARB |
| 9 | 2.1 | 42 | 59 | 22 | 3 | -0.2 | 18 | 18 | 3 | .41 | -17 | -01 | |
| ACC | .18 | .35 | .30 | .18 | .17 | .17 | .16 | .16 | P | P | P | P | P |
| Percentile Ranking | 30% | -- | -- | -- | -- | -- | -- | -- | -- | -- | -- | 20% | -- |

PERCENTILE BREAKDOWN 2008-2010 BORN CALVES

| Upper Percentile Group | Calving Ease Direct | Birth Weight | Weaning Weight | Yearling Weight | Milking Ability | Calving Ease Maternal | Scrotal Circum. | Stayability | Docility | Carcass Weight | Ribeye Area | Yield Grade | Marbling Score | SMTI |
|------------------------|---------------------|--------------|----------------|-----------------|-----------------|-----------------------|-----------------|-------------|----------|----------------|-------------|-------------|----------------|------|
| 1% | 19 | -3.3 | 63 | 113 | 34 | 11 | 1.1 | 26 | 33 | 52 | 0.89 | -0.25 | 0.50 | 61 |
| 2% | 17 | -2.6 | 61 | 109 | 33 | 10 | 1.0 | 25 | 31 | 48 | 0.84 | -0.23 | 0.42 | 59 |
| 3% | 16 | -2.3 | 59 | 107 | 32 | 9 | 0.9 | 24 | 30 | 45 | 0.81 | -0.22 | 0.39 | 57 |
| 4% | 15 | -2.0 | 58 | 105 | 31 | 9 | 0.9 | 24 | 29 | 43 | 0.79 | -0.21 | 0.35 | 55 |
| 5% | 15 | -1.8 | 57 | 103 | 30 | 9 | 0.9 | 23 | 28 | 42 | 0.77 | -0.20 | 0.32 | 54 |
| 10% | 13 | -1.0 | 54 | 98 | 28 | 7 | 0.8 | 22 | 26 | 37 | 0.71 | -0.18 | 0.22 | 51 |
| 20% | 11 | -0.1 | 50 | 92 | 26 | 6 | 0.6 | 21 | 22 | 31 | 0.62 | -0.14 | 0.09 | 48 |
| 30% | 9 | 0.6 | 47 | 87 | 24 | 5 | 0.5 | 20 | 19 | 27 | 0.55 | -0.11 | 0.04 | 46 |
| 40% | 8 | 1.2 | 45 | 83 | 23 | 4 | 0.4 | 18 | 17 | 23 | 0.49 | -0.09 | 0.00 | 45 |
| 50% | 7 | 1.6 | 42 | 80 | 21 | 3 | 0.4 | 17 | 15 | 20 | 0.42 | -0.06 | -0.02 | 44 |
| 60% | 6 | 2.1 | 41 | 76 | 20 | 2 | 0.3 | 16 | 13 | 16 | 0.36 | -0.02 | -0.05 | 43 |
| 70% | 6 | 2.5 | 38 | 73 | 19 | 2 | 0.2 | 15 | 11 | 13 | 0.27 | 0.02 | -0.07 | 42 |
| 80% | 5 | 3.0 | 36 | 69 | 17 | 1 | 0.1 | 14 | 9 | 9 | 0.13 | 0.10 | -0.09 | 40 |
| 90% | 3 | 3.8 | 32 | 64 | 15 | 0 | 0.0 | 13 | 6 | 3 | -0.06 | 0.22 | -0.12 | 39 |

YEARLING BULLS

49

WZRK Mr RANGERIDER 3065W

PB Bull Dbl. Polled / Dbl. Black BD: 4/5/09 NPM-1941278

WULFS RANGE RIDER 2056R
NPM-1808947 LLLL LLL* P

WULFS MAGGIE 2056M LLLL LLL* P

WZRK MISS KENWORTH 3065N
NPF-1736996 LLLL LLL* P

RGMA NIGHT RIDER 73N LLLL LLL* P

FAIR HAVEN 540K LLLL LLL* P

WZRK MISS F. LINER 9061J LLLL LLL* P

| PERF | CE | BW | ADJ. WW | | | ADJ. YW | | | SC | SMTI | | | |
|--------------------|-----|-----|---------|-----|-----|---------|-----|----|-----|------|-----|------|------|
| | A | 94 | 594 | | | 30.0 | | | 39 | | | | |
| EPDs | CED | BW | WW | YW | MA | CEM | SC | ST | DOC | CW | REA | YG | MARB |
| 7 | 1.7 | .43 | .82 | .22 | 4 | 0.2 | | | 26 | 19 | .54 | -.05 | -.11 |
| ACC | .18 | .35 | .30 | .19 | .15 | .17 | .17 | | .14 | P | P | P | P |
| Percentile Ranking | -- | -- | -- | -- | -- | -- | -- | -- | -- | -- | -- | -- | -- |



50

WZRK Mr Nascar 3031W

PB Bull Double Polled / Red BD: 4/6/09 NPM-1941275

WULFS NASCAR G949N
NPM-1740231 LLLL LLL* P

GFLI GORDON LADY 949J LLLL LLLX P

WZRK MISS KABOOM 3031N
NPF-1736969 LLLL LLL* P

MAGS KABOOM LLLL LLL* P

WZRK 7068G LLLL LLL* P

| PERF | CE | BW | ADJ. WW | | | ADJ. YW | | | SC | SMTI | | | |
|--------------------|-----|----|---------|----|----|---------|-----|----|-----|------|------|------|------|
| | A | 89 | 712 | | | 33.7 | | | 48 | | | | |
| EPDs | CED | BW | WW | YW | MA | CEM | SC | ST | DOC | CW | REA | YG | MARB |
| 5 | 3.9 | 60 | 108 | 15 | 1 | 0.8 | 19 | 30 | 29 | .56 | -.14 | -.04 | |
| ACC | P | P+ | P+ | P | P | P | P | P | P | P | P | P | P |
| Percentile Ranking | -- | -- | 3% | 3% | -- | -- | 10% | -- | 3% | 30% | 30% | 20% | -- |

51

WZRK Mr RENEGADE 6011W

PB Bull Double Polled / Black BD: 4/8/09 NPM-1941297

ROMN RENEGADE 111R
NPM-1800002 LLLL LLL* P

ROMN NORINE 28N LLLL LLL* P

WZRK MISS GENESIS 6011S
NPF-1852796 LLLL LLL* P

WZRK GENESIS 532E LLLL LLLH H

WZRK MISS TUBB 1019L LLLL LLL* P

| PERF | CE | BW | ADJ. WW | | | ADJ. YW | | | SC | SMTI | | | |
|--------------------|-----|-----|---------|-----|-----|---------|-----|----|-----|------|------|------|------|
| | A | 92 | 601 | | | 31.9 | | | 40 | | | | |
| EPDs | CED | BW | WW | YW | MA | CEM | SC | ST | DOC | CW | REA | YG | MARB |
| 9 | 2.0 | .39 | .72 | .18 | 8 | 0.4 | 18 | 10 | 4 | .46 | -.16 | -.08 | |
| ACC | .16 | .34 | .28 | .17 | .13 | .14 | .11 | | .14 | P | P | P | P |
| Percentile Ranking | 30% | -- | -- | -- | -- | 10% | -- | -- | -- | -- | -- | 20% | -- |

52

WZRK Mr Nascar 8028W

PB Bull Double Polled / Red BD: 4/10/09 NPM-1941324

WULFS NASCAR G949N
NPM-1740231 LLLL LLL* P

WULFS KLINT 5874K LLLL LLL* P

GFLI GORDON LADY 949J LLLL LLLX P

WZRK MISS FLINER 8028H
NPF-1445692 LLLL LLL* P

WULFS FREIGHTLINER 3597F LLLL LLL* P

WZRK MISS STETSON 740E LLLL LLL* P

| PERF | CE | BW | ADJ. WW | | | ADJ. YW | | | SC | SMTI | | | |
|--------------------|-----|-----|---------|-----|-----|---------|-----|----|-----|------|------|------|------|
| | A | 95 | 672 | | | 33.4 | | | 44 | | | | |
| EPDs | CED | BW | WW | YW | MA | CEM | SC | ST | DOC | CW | REA | YG | MARB |
| 4 | 4.3 | .55 | 102 | 16 | 2 | 0.3 | 17 | 30 | 34 | .73 | -.15 | -.10 | |
| ACC | .19 | .36 | .31 | .20 | .21 | .18 | .20 | | .19 | P | P | P | P |
| Percentile Ranking | -- | -- | 10% | 10% | -- | -- | -- | -- | 3% | 20% | 10% | 20% | -- |

53

WZRK Mr Nascar 5016W

PB Bull Double Polled / Black BD: 4/12/09 NPM-1941287

WULFS NASCAR G949N
NPM-1740231 LLLL LLL* P

WULFS KLINT 5874K LLLL LLL* P

GFLI GORDON LADY 949J LLLL LLLX P

WZRK MISS LODESTAR 5016R
NPF-1819307 LLLL LLL* P

JCL LODESTAR 27L LLLL LLL* P

WZRK 7068G LLLL LLL* P

| PERF | CE | BW | ADJ. WW | | | ADJ. YW | | | SC | SMTI | | | |
|--------------------|-----|-----|---------|-----|-----|---------|-----|-----|--------------|------|------|-----|------|
| | A | 90 | 690 | | | 30.2 | | | 50 (Top 20%) | | | | |
| EPDs | CED | BW | WW | YW | MA | CEM | SC | ST | DOC | CW | REA | YG | MARB |
| 7 | 3.0 | .62 | 114 | 17 | 3 | 0.7 | 19 | 16 | 42 | .57 | -.07 | .01 | |
| ACC | .20 | .35 | .30 | .20 | .18 | .19 | .18 | | .19 | P | P | P | P |
| Percentile Ranking | -- | -- | 2% | 1% | -- | -- | 20% | 30% | -- | 5% | 30% | -- | -- |

54

WZRK Mr Nascar 5046W

PB Bull Double Polled / Red BD: 4/12/09 NPM-1941291

WULFS NASCAR G949N
NPM-1740231 LLLL LLL* P

WULFS KLINT 5874K LLLL LLL* P

GFLI GORDON LADY 949J LLLL LLLX P

WZRK MISS GENESIS 5046R
NPF-1819337 LLLL LLL* P

WZRK GENESIS 532E LLLL LLLH H

WZRK MISS FORTUNE COOKIE LLLL LLL* P

| PERF | CE | BW | ADJ. WW | | | ADJ. YW | | | SC | SMTI | | | |
|--------------------|-----|-----|---------|-----|-----|---------|-----|----|--------------|------|------|------|------|
| | A | 98 | 636 | | | 35.7 | | | 48 (Top 20%) | | | | |
| EPDs | CED | BW | WW | YW | MA | CEM | SC | ST | DOC | CW | REA | YG | MARB |
| 3 | 5.0 | .61 | 107 | 9 | 4 | 0.6 | 18 | 29 | 30 | .81 | -.25 | -.06 | |
| ACC | .19 | .35 | .30 | .20 | .19 | .18 | .18 | | .18 | P | P | P | P |
| Percentile Ranking | -- | -- | 2% | 3% | -- | -- | 20% | -- | 4% | 20% | 3% | 1% | -- |

55

WZRK Mr RAWHIDE 9023W

PB Bull Polled / Red BD: 4/14/09 NPM-1941347

RAWHIDE 740L
NPM-1655222 LLLL LLL* P

L7 BLACK DIAMOND 766G LLLL LLL* P

NP MISS TYGER 187E LLLL LLL* P

WZRK MISS GENESIS 9023J
NPF-1509240 LLLL LLL* H

WZRK GENESIS 532E LLLL LLLH H

WZRK MISS ULTRA 743E LLLL LLL* H

| PERF | CE | BW | ADJ. WW | | | ADJ. YW | | | SC | SMTI | | | |
|--------------------|-----|-----|---------|-----|-----|---------|-----|-----|-----|------|------|------|------|
| | A | 92 | 623 | | | 33.7 | | | 45 | | | | |
| EPDs | CED | BW | WW | YW | MA | CEM | SC | ST | DOC | CW | REA | YG | MARB |
| 4 | 3.8 | .50 | .83 | 21 | 3 | 0.5 | 20 | 14 | 10 | .49 | -.14 | -.03 | |
| ACC | .19 | .36 | .30 | .18 | .18 | .18 | .16 | | .18 | P | P | P | P |
| Percentile Ranking | -- | -- | 20% | -- | -- | -- | 30% | 30% | -- | -- | -- | 20% | -- |



REFERENCE SIRE

WULFS Nascar G949N

3/13/03

FI G949N

PB, Polled Red

NPM-1740231

SIRE: WULFS KLINT 5874K

{WULFS RAMBLER 8400X

{WULFS EXAMPLE 5074E

DAM: GFLI GORDON LADY 949J

{COLE END ZONE 60E

{GFLI GORDON LADY 614F

| EPDs | CED | BW | WW | YW | MA | CEM | SC | STAY | DOC | CWT | REA | YG | MARB | SMTI |
|--------------------|-----|-----|-----|-----|-----|-----|-----|------|-----|-----|-----|------|------|------|
| | 2 | 4.3 | 64 | 120 | 6 | 0 | 0.7 | 18 | 36 | 43 | .75 | -.12 | -.07 | 48 |
| ACC | .73 | .83 | .78 | .69 | .51 | .72 | .68 | P | .66 | .72 | .69 | .69 | .69 | |
| Percentile Ranking | -- | -- | 2% | 1% | -- | -- | 20% | -- | 1% | 10% | 10% | -- | -- | 10% |

Sire of Lots 11, 21, 22, 23, 26, 27, 30, 37, 38, 41, 50, 52, 53 and 54.

REFERENCE SIRE

WZRK Genesis

3/29/95

WZRK 532E

FB Horned Red

NPM-1253620

SIRE: GALILEO

{URON

{SENORITA

DAM: TEXS STAR GLINT

{WRC PUNCH

{TEXS STAR GRAND ENTRY

| EPDs | CED | BW | WW | YW | MA | CEM | SC | STAY | DOC | CWT | REA | YG | MARB | SMTI |
|--------------------|-----|-----|-----|-----|-----|-----|-----|------|-----|-----|------|------|------|------|
| | 4 | 5.7 | 58 | 95 | 23 | 7 | 0.5 | 20 | 4 | 36 | 1.29 | -.53 | -.02 | 51 |
| ACC | .84 | .87 | .82 | .74 | .73 | .83 | .71 | .43 | .77 | .83 | .82 | .82 | .82 | |
| Percentile Ranking | -- | -- | 5% | 20% | 30% | 20% | 30% | 30% | -- | 20% | 1% | 1% | 30% | 4% |

Sire of Lot 1.

REFERENCE SIRE

Wulf's Nobel Prize

4/27/03

FI 3861N

PB Black, Homozygous Polled

NPM-1739610

SIRE: COLE WULF HUNT

{COLE FIRST DOWN 46D

{COLE CATALINA 3309C

DAM: WULF'S CASUAL 3161C

{WULF'S HOME RUN 9226S

{MISS WOLFETTE 8021K

| EPDs | CED | BW | WW | YW | MA | CEM | SC | STAY | DOC | CWT | REA | YG | MARB | SMTI |
|--------------------|-----|-----|-----|-----|-----|-----|-----|------|-----|-----|------|------|------|------|
| | 7 | 1.3 | 50 | 76 | 24 | 3 | 0.0 | 24 | 32 | 40 | 1.06 | -.21 | .06 | 49 |
| ACC | .86 | .92 | .88 | .80 | .65 | .86 | .79 | P | .77 | .79 | .77 | .77 | .76 | |
| Percentile Ranking | -- | -- | 20% | -- | 30% | -- | -- | 3% | 3% | 10% | 1% | 10% | 20% | 10% |

Sire of Lots 32, 36 and 46.

REFERENCE SIRE

Rawhide 740L

9/8/01

PB, Red, Homozygous Polled

KRCO 740L

NPM-1655222

SIRE: L7 BLACK DIAMOND 766G

{COLE FIRST DOWN 46D

{MISS L7 913X

DAM: NP MISS TYGER 187E

{FSHK BLACK OLY 357

{MK TANIA

| EPDs | CED | BW | WW | YW | MA | CEM | SC | STAY | DOC | CWT | REA | YG | MARB | SMTI |
|--------------------|-----|-----|-----|-----|-----|-----|-----|------|-----|-----|-----|------|------|------|
| | 5 | 2.0 | 36 | 54 | 20 | 0 | 0.2 | 21 | 23 | 2 | .27 | -.05 | -.07 | 38 |
| ACC | .56 | .76 | .69 | .56 | .37 | .54 | .50 | P | .53 | .55 | .52 | .52 | .51 | |
| Percentile Ranking | -- | -- | -- | -- | -- | -- | -- | 20% | 20% | -- | -- | -- | -- | -- |

Sire of Lots 2, 24, 25, 43, 48 and 55.

REFERENCE SIRE

ROMN Renegade 111R

3/5/05

PB, Black, Double Polled

ROMN 111R

NPM-1800002

SIRE: ROMN JUSTICE

{ROMN FORTUNE

{ROMN LADY ROCK 57G

DAM: ROMN NORINE 28N

{ROMN TOMMY BOY

{BLACK DOWN 13G

| EPDs | CED | BW | WW | YW | MA | CEM | SC | STAY | DOC | CWT | REA | YG | MARB | SMTI |
|--------------------|-----|------|-----|-----|-----|-----|-----|------|-----|-----|-----|------|------|------|
| | 12 | -0.3 | 25 | 55 | 17 | 7 | 0.4 | 16 | 18 | -15 | .20 | -.07 | -.06 | 36 |
| ACC | .43 | .68 | .61 | .48 | .25 | .37 | .30 | P | .33 | .45 | .40 | .40 | .39 | |
| Percentile Ranking | 20% | 20% | -- | -- | -- | 20% | -- | -- | -- | -- | -- | -- | -- | -- |

Sire of Lot 51.

REFERENCE SIRE

DVFC Warden 233K

2/24/00

PB, Black Homozygous Polled

DVFC 233K

NPM-1578051

SIRE: WULFS GUARDIAN 5074G

{WULFS RAMBLER 8400X

{WULFS EXAMPLE 5074E

DAM: DBRO GONE FISHIN 415G

{WULFS QUARTERBACK 4222B

{WOFA POLLED SARAH 654C

| EPDs | CED | BW | WW | YW | MA | CEM | SC | STAY | DOC | CWT | REA | YG | MARB | SMTI |
|--------------------|-----|-----|-----|-----|-----|-----|-----|------|-----|-----|------|------|------|------|
| | 4 | 1.9 | 61 | 104 | 8 | 0 | 0.2 | 22 | 24 | 54 | 1.13 | -.16 | -.26 | 40 |
| ACC | .82 | .87 | .78 | .64 | .58 | .82 | .59 | .16 | .67 | .72 | .70 | .70 | .70 | |
| Percentile Ranking | -- | -- | 3% | 5% | -- | -- | -- | 10% | 20% | 2% | 1% | 30% | -- | -- |

Sire of Lot 13.

REFERENCE SIRE

KAJO Responder 120R

2/28/05

Homo Black, Homo Polled

KAJO 120R

NPM-1813144

SIRE: JCL LODESTAR 27L

{HUNTS HI-LITER 245G

{LOGANS CHEERLEADER 280G

DAM: KAJO SHERYL SWOOPS 11H

{HC POLLED I 102A

{KAJO FANCY 3F

| EPDs | CED | BW | WW | YW | MA | CEM | SC | STAY | DOC | CWT | REA | YG | MARB | SMTI |
|--------------------|-----|-----|-----|-----|-----|-----|-----|------|-----|-----|-----|-----|------|------|
| | 11 | 2.8 | 59 | 112 | 21 | 6 | 1 | -- | 15 | 47 | .34 | .20 | .06 | 48 |
| ACC | .66 | .85 | .79 | .61 | .42 | .64 | .51 | -- | .56 | .50 | .45 | .45 | .45 | |
| Percentile Ranking | 20% | -- | 4% | 2% | -- | 20% | 3% | -- | -- | 4% | -- | -- | 20% | 10% |

Sire of Lot 42.



ROMN Tuff Enuff 103T

REFERENCE SIRE

ROMN Tuff Enuff 103T PB, Red, Homozygous Polled

2/27/07 ROMN 103T NPM-1878994

SIRE: WULFS RANSOM 3059R {WULFS NASA 1212N
 {WULFS NOBILITY 3059N
 DAM: ROMN ROBERTA 35R {ROMN MADE TO ORDER
 {ROMN LOU 24L

| EPDs | CED | BW | WW | YW | MA | CEM | SC | STAY | DOC | CWT | REA | YG | MARB | SMTI |
|--------------------|------|-----|-----|-----|-----|-----|-----|------|-----|-----|-----|-----|------|------|
| 19 | -4.3 | 38 | 78 | 35 | 13 | 0.6 | -- | 18 | 54 | .77 | .08 | .11 | 45 | |
| ACC | .34 | .65 | .48 | .26 | .16 | .24 | .30 | -- | .23 | .21 | .19 | .19 | | |
| Percentile Ranking | 2% | 1% | -- | -- | 1% | 1% | 20% | -- | -- | 2% | 10% | -- | 10% | 30% |

Sire of Lots 4, 5, 7, 8, 9, 10, 12, 14, 15 and 18.

REFERENCE SIRE

Wulfs Range Rider 2056R PB, Black, Polled

4/2/05 FI 2056R NPM-1808947

SIRE: RGMA NIGHT RIDER 73N {GPFF BLAQUE RULON
 {WULFS GIGGLE BOX 7030G
 DAM: WULFS MAGGIE 2056M {COLE WOLF HUNT
 {MISS WULFETTE 0277K

| EPDs | CED | BW | WW | YW | MA | CEM | SC | STAY | DOC | CWT | REA | YG | MARB | SMTI |
|--------------------|-----|-----|-----|-----|-----|-----|-----|------|-----|-----|------|------|------|------|
| 8 | 1.4 | 48 | 90 | 22 | 3 | 0.0 | -- | 18 | 26 | .82 | -.21 | -.18 | 40 | |
| ACC | .59 | .78 | .71 | .62 | .29 | .57 | .62 | -- | .43 | .49 | .44 | .44 | | |
| Percentile Ranking | -- | -- | 30% | 30% | -- | -- | -- | -- | -- | 30% | 10% | 10% | -- | -- |

Sire of Lots 3, 17, 31, 40, 44, 45, 47 and 49.

REFERENCE SIRE

Wulfs Ransom 3059N PB, Red, Homo Polled

4/24/05 FI 3059N NPM-1804523

SIRE: WULFS NASA 1212N {WULFS FANFARE 4055F
 {MISS WULFETTE 1212L
 DAM: WULFS NOBILITY 3059N {COLE WOLF HUNT
 {WULFS KLARICE 0095K

| EPDs | CED | BW | WW | YW | MA | CEM | SC | STAY | DOC | CWT | REA | YG | MARB | SMTI |
|--------------------|------|-----|-----|-----|-----|-----|-----|------|-----|-----|------|-----|------|------|
| 18 | -5.0 | 38 | 75 | 35 | 14 | 0.1 | -- | 39 | 32 | .66 | -.04 | 0.0 | 42 | |
| ACC | .78 | .90 | .86 | .76 | .44 | .74 | .75 | -- | .65 | .61 | .54 | .54 | .55 | |
| Percentile Ranking | 2% | 1% | -- | -- | 1% | 1% | -- | -- | 1% | 20% | 20% | -- | 30% | -- |

Sire of Lots 6, 33 and 34.

REFERENCE SIRE

OKLF Linebacker 341L PB, Red, Homozygous Polled

3/21/01 OKLF 341L NPM-1642600

SIRE: VORD HALFBACK {WULF'S QUARTERBACK 4222B
 {VORT DANDI
 DAM: WULF'S ESTHER 5146E {WULF'S RAMBLER 8400X
 {MISS WOLFETTE 8021K

| EPDs | CED | BW | WW | YW | MA | CEM | SC | STAY | DOC | CWT | REA | YG | MARB | SMTI |
|--------------------|------|-----|-----|-----|-----|------|-----|------|-----|------|------|------|------|------|
| 28 | -2.3 | 55 | 90 | 21 | 6 | -0.3 | 19 | 8 | 53 | 1.03 | -.20 | -.06 | 46 | |
| ACC | .89 | .92 | .87 | .80 | .68 | .88 | .82 | P | .51 | .83 | .82 | .82 | .81 | |
| Percentile Ranking | 1% | 3% | 10% | 30% | -- | 20% | -- | -- | -- | 2% | 1% | 20% | -- | 20% |

Sire of Lots 16 and 19.

REFERENCE SIRE

Wulfs Shop Talk 2332S PB, Homo. Black, Homo. Polled

4/7/06 FI 2332S NPM-1838716

SIRE: CARROUSELS PUREPOWER {GPFF BLAQUE RULON
 {TUBB FIRST CLASS 666F
 DAM: WULFS MYRLENE 2332M {COLE WLF HUNT
 {WULFS JOY BELLS 9202J

| EPDs | CED | BW | WW | YW | MA | CEM | SC | STAY | DOC | CWT | REA | YG | MARB | SMTI |
|--------------------|-----|-----|-----|-----|-----|-----|-----|------|-----|-----|------|-----|------|------|
| 10 | 1.0 | 59 | 102 | 16 | 4 | 1.1 | -- | 15 | 58 | .93 | -.13 | .00 | 49 | |
| ACC | .31 | .84 | .77 | .61 | .21 | .25 | .60 | -- | .32 | .47 | .42 | .42 | .42 | |
| Percentile Ranking | 30% | -- | 4% | 10% | -- | -- | 2% | -- | -- | 1% | 3% | -- | 30% | 10% |

Sire of Lot 20.

REFERENCE SIRE

LVLS Top Criteria 8862P PB, Homo. Black, Homo. Polled

1/21/04 LVLS 8862P NPM-1775475

SIRE: COLE WOLF HUNT {COLE FIRST DOWN 46D
 {COLE CATALINA 3309P
 DAM: LVLS 8862M {WZRK BIG KAHUNA 8046K
 {LVLS 3862G

| EPDs | CED | BW | WW | YW | MA | CEM | SC | STAY | DOC | CWT | REA | YG | MARB | SMTI |
|--------------------|------|-----|-----|-----|-----|-----|-----|------|-----|-----|------|------|------|------|
| 15 | -0.7 | 51 | 91 | 24 | 6 | 0.1 | 19 | 14 | 22 | .97 | -.15 | -.03 | 45 | |
| ACC | .47 | .84 | .78 | .56 | .24 | .41 | .51 | P | .27 | .47 | .42 | .42 | | |
| Percentile Ranking | 5% | 10% | 20% | 20% | 30% | 20% | -- | -- | -- | -- | 2% | 30% | -- | 30% |

Sire of Lots 28 and 39.

REFERENCE SIRE

ROMN Made To Order 101M Purebred, Red, Polled

3/17/02 ROMN 101M NPM-1684843

SIRE: ROMN JUSTICE {ROMN FORTUNE
 {ROMN LADY ROCK 57G
 DAM: ROMN MISSTHICK 34K {DT POLLED THICK SET 01E
 {ROMN MISS CLEO 40D

| EPDs | CED | BW | WW | YW | MA | CEM | SC | STAY | DOC | CWT | REA | YG | MARB | SMTI |
|--------------------|-----|-----|-----|-----|-----|-----|----|------|-----|-----|------|------|------|------|
| 10 | 3.7 | 58 | 109 | 25 | 12 | 1.5 | 15 | 29 | 49 | .91 | -.18 | -.07 | 46 | |
| ACC | .88 | .82 | .72 | .64 | .83 | .70 | P | .71 | .77 | .76 | .76 | .76 | .75 | |
| Percentile Ranking | 30% | -- | 5% | 3% | 20% | 1% | 1% | -- | 5% | 3% | 3% | 20% | -- | 20% |

Sire of Lots 29 and 35.

TERMS & CONDITIONS

TIME AND LOCATION: The Wieczorek Limousin 30th Annual bull sale will be held Friday, February 26, 2010, at the South Dakota Horse Sale, Inc., beginning at 1:00 p.m.

SALE HEADQUARTERS: The Parkway Motel, Corsica, SD (605-946-5230) the Ramada Inn, Mitchell, SD (605-996-6501) & the Hampton Inn, Mitchell (605-995-1575) have been designated as sale headquarters.

IDENTIFICATION OF ANIMALS: (1) Each animal sold will have a readable tattoo corresponding to its registration paper. (2) Seller agrees to check all tattoos for accuracy prior to the sale. The buyer has the responsibility for rechecking the tattoos after taking possession and reporting any discrepancies to the seller immediately. (3) All animals to be sold will be identified by their official registration number, their tattoo, and their registered name. If nicknames are used, they should be in addition to the other information. (4) The NALF board recommends that when any animal is sold, there is complete disclosure of any retained genetics in the form of pregnant recipients, frozen embryos, or frozen semen.

REGISTRATION CERTIFICATES: (1) The seller of the animal will submit the original registration certificate with transfer information or an application for registration with transfer information on it so that a certificate can be produced by the Foundation and transferred to the new buyer. The seller must sign the back of the certificate on the application to authorize the transfer. (2) It is the responsibility of the seller to provide the North American Limousin Foundation with the buyer's complete name, address, and membership number (if available) so that we can complete the transfer. It is important that the membership number be given if the buyer is already a member of NALF. (3) It is the seller's responsibility to provide the certificate or application, and transfer information to the NALF within 60 days following the date of sale, and pay transfer and registration fees.

TERMS: Terms of all sales are considered to be cash or 1/2 down and balance due on delivery unless credit arrangements have been made prior to the sale between the buyer and the seller.

LIABILITY: Each animal will be at the buyer's risk as soon as sold, but will be cared for by the seller for a reasonable period of time. Every precaution will be taken for the welfare of the cattle sold. Wieczorek Limousin and South Dakota Horse Sale, Inc. will not be responsible for any accidents, but every effort will be made to provide for the safety and comfort of those attending the sale.

HEALTH: (1) On all animals sold, health tests will be announced at the sale or printed in the sale catalog. It is understood that health papers reflect the condition of the animal at the time of the sale but carry no further guarantee as to the future health of the animal. (2) Buyers having special health requests or who wish to take cattle into states with specific and rigid health regulations should inquire specifically about the health tests required for entry into their state. (3) All females sold are considered to be calfhood vaccinated for Brucellosis unless they are otherwise stated in the catalog or announced from the block. It is suggested that verification of vaccination be written on the health certificate.

ANNOUNCEMENTS: (1) Any change from the information that is printed in the catalog will be announced from the auction block. (2) All announcements made from the auction block take precedence over the printed catalog. (3) Catalogued lots not selling will be announced prior to the sale.

BREEDING GUARANTEE: (1) All animals are guaranteed to be breeders with the exception of: a. calves under twelve months of age; b. in the event of any injury or disease that occurs to the calf after sale; c. gross negligence or willful misconduct on the part of the purchaser; d. females used in embryo transplant. (2) Bulls are unconditionally guaranteed for the first breeding season (ending

8/31/10), to handle a reasonable load. Any guarantee with respect to the ability to freeze semen shall be a separate agreement between buyer and seller. (3) Females sold as safe in calf have been examined by a competent veterinarian or other reproductive technician and are so guaranteed to be with calf. (4) Any guarantee with respect to embryo transplant production shall be a separate agreement between buyer and seller.

OPTION AND PRIVILEGE OF RETURN OR ADJUSTMENT:

(1) All claims for adjustments or refunds must be made in writing either within six months of the date of the sale or no later than six months after the animal reaches 18 months of age, whichever occurs last. (2) In the event that an animal is claimed to be a non-breeder, that animal must be returned to the farm of the seller in good condition and must have met the health requirements of the original sell state. The seller shall be entitled to six months trial following the return of the animal in which to prove that the animal is a breeder. If at the end of six months, the seller has been unable to prove the animal as a breeder, the seller shall, at the option of the buyer, replace the animal with another of equal value or refund the total purchase price. The return of the purchase price shall in all cases be deemed as full settlement.

Any expense incurred in transporting the animal that is claimed to be a non-breeder shall be the responsibility of the purchaser, except that the seller shall be responsible for transportation costs in the excess of the distance between the purchaser's farm and the location of the sale. If the seller proves the animal to be a breeder, it shall be the obligation of the purchaser to take delivery of the animal and pay all expenses incurred for transportation. (3) It is the obligation of the buyer and seller to negotiate any settlements on cattle that have not been properly presented at a sale. The selling of an animal constitutes a contract between buyer and seller and is not the responsibility or the right of the North American Limousin Foundation or of the sale management firm to settle disagreements between buyers and sellers of cattle that have not been properly presented.

The return of an animal at the expense of the purchaser with a refund of the purchase price made by the seller is in all cases considered to be a complete settlement. Other settlements which are negotiated between buyer and seller may be equitable to cover instances in which cattle are not as represented sale day, but that does not warrant complete return of the animal.

BLOOD TYPING FOR PARENTAGE VERIFICATION: All animals sold are guaranteed to be offspring of their recorded parents. Under the rules of NALF, all bulls born after January 1, 1991, that are to be used for artificial insemination or used naturally in a herd other than the owner of record must be parent verified by blood typing to both sire and dam. All females born after July 1, 1987, that are to be used for embryo transplant and all bulls born between July 1, 1987, and December 31, 1990, that are to be used for artificial insemination or used naturally in a herd other than the owner of record must be sire verified through blood samples available to purchasers upon written request by the purchasers so long as written request is received by sellers within 60 days after the date of sale of the applicable animal.

INSURANCE: Anyone wishing to insure their purchases may do so by contacting the sale consultant.



Wallace & Noreen Wieczorek
39778 267th St. • Mt. Vernon, SD • 605/227-4611

Curt & Leanne Wieczorek
39768 267th St. • Mt. Vernon, SD • 605/227-4601

