

2010



KENTUCKY FARM BUREAU
BEEF EXPO

Limousin Show & Sale

Saturday

March 6

2010

New Market Hall
Louisville, Kentucky





Kentucky Farm Bureau Federation

9201 Danvers Parkway • P.O. Box 37790 • Louisville, KY 40230-3700
Telephone (502) 495-5000 • Fax (502) 495-5114 • www.kfb.com

MARK HANEY
President
KEVIN BISHOP
First Vice President
DANIEL HAYES
Second Vice President
DAVID BRUCE
Executive Vice President

Welcome to the 2010 Kentucky Farm Bureau Beef Expo and Limousin Show and Sale. We are very proud to serve as the corporate sponsor of the expo.

With over 480,000 members, Kentucky Farm Bureau is actively involved in ensuring that Kentucky agriculture remains a strong and vital element of our Commonwealth's economy.

Beef cattle are an integral part of Kentucky agriculture. We applaud the efforts of those who work so diligently to improve an industry already known for its excellence, through events such as the 2010 Kentucky Farm Bureau Beef Expo.

Considering ever-increasing consumer demand for high-quality and safe food, efforts to improve Kentucky's beef cattle industry are now more important than ever. The Expo offers you the latest industry news and information, along with the opportunity to obtain some of the best breeding stock in the United States.

Again we welcome you to the 2010 Kentucky Farm Bureau Beef Expo, and hope the many valuable resources available here will benefit both you and your cattle operation.

Sincerely,

Mark Haney
Mark Haney
President

"Voice of Kentucky"



Live Internet Bidding @ www.edjecast.com
Register to view or bid • No buyer's premium



Richie Farmer
Commissioner



Kentucky
Department of
Agriculture

A Consumer Protection And Service Agency

32 Fountain Place
Frankfort, KY 40601
Phone: (502) 566-5128
Fax: (502) 564-5016
Email: richie.farmer@kyagr.com

Dear friends,

Welcome to the 24th annual Kentucky Farm Bureau Beef Expo. The partnership of the Kentucky Department of Agriculture and Kentucky Farm Bureau makes the Beef Expo one of the most successful beef cattle events in the United States.

Hundreds of purebred, top-quality cattle from some of the best genetics in the nation will compete for more than \$100,000 in premiums. For the commercial operator, the popular pen heifer show and sale returns. Last year, cattle from 17 states sold for top dollar in the sale ring. I expect another strong showing this year.

On Sunday, more than 500 young people will compete for premiums, prizes and awards in the junior heifer, steer and market heifer shows. Many of the youth will test their skills in the annual judging contest. Competitions such as these help teach our young people values such as hard work and discipline that will carry over into their adult lives.

The Kentucky Department of Agriculture is an important part of the Beef Expo's success. KDA employees work the shows, sales and judging contests. I am pleased that the Department helps make this show possible.

While you're in Louisville, look for Kentucky Proud products for your dining and shopping enjoyment. Kentucky Proud is the Commonwealth's official farm marketing program. More than 1,800 producers, processors, retailers, restaurants, state parks and Kentucky Farm Bureau roadside markets are members of Kentucky Proud. When you try Kentucky Proud, you'll find out that nothing else is close.

I hope you have a successful Beef Expo and a pleasant stay in Louisville.

Sincerely,

Richie Farmer

RICHIE FARMER
Commissioner of Agriculture
Commonwealth of Kentucky



www.kyagr.com



KENTUCKY BEEF EXPO

Limousin Show & Sale

Saturday **March 6** 2010

New Market Hall, Louisville, Kentucky

Sale Day Phones: 502-367-5472 or 817-821-6263 (Keith)

Schedule of Limousin Events:

Saturday, March 6, 2010

10:00 am Limousin Breed Show

3:00 pm Limousin Breed Sale

Sunday, March 7, 2010

8:00 am Jr. Heifer & Steer Show

Lodging:

Louisville, Holiday Inn South

502-964-3111 • 800-465-4329

Fern Valley Hotel - Louisville

502-964-3311 • 1-877-964-3311 (outside of KY)

Auctioneer:

Bruce Brooks

Terms & Conditions:

Cattle sell under the standard sale terms and conditions of the North American Limousin Foundation

EPD Information

Please note that EPDs may change from the time the sale catalog is printed until registration papers are transferred.

Sale Management

Consignors:

DOUBLE H LIMOUSIN

Thadd Fosdick
31507 N 3460 E
Chenoa, IL 61726
(815) 867-6915

JP'S LEE HILL FARMS

Jeanne Price Shannon McComas
1995 Ridge Rd.
Raphine, VA 24472
(540) 569-6219

DOUBLE K LIMOUSIN

Brian Kidd
5609 Hwy 711
West Liberty, KY 41472
(606) 362-9071

LEGACY FARMS LIMOUSIN

Joan & Randy Meyer
1824 Irving Rd.
Witt, IL 62094
(217) 594-7758

DOUBLE O LIMOUSIN FARMS

Matt Otto
5625 N 700 E
Kokomo, IN 46901
(765) 432-6848

LIGHT FARMS

Shawn Light
217 Shepards Chapel Rd.
Rogersville, TN 37857
(423) 360-1578

ENGLEWOOD FARMS

John Tobe - Owner
761 Engleman Lane
Lancaster, KY 40444
(859) 533-1301

MASSEY LIMOUSIN

Joey Massey
80 Sublimity School Rd.
London, KY 40744
(606) 682-2126

FAWLEY FARMS LIMOUSIN

Megan & Molly Greenawalt
3540 Anderson Rd.
Lynchburg, OH 45142
(937) 763-0931

QUAIL RIDGE LIMOUSIN

Hugh Montgomery
175 Jeremiah Lane
Calhoun, KY 42327
(270) 273-3246

FREED LIVESTOCK

Jonathan Freed
46 Lakeview Dr.
Fairbury, IL 61739
(815) 867-0488

THE GLEBE LIMOUSIN FARM

Harrison Ruffin
12800 The Glebe Lane
Charles City, VA 23030
(804) 386-8748

HB FARMS

Greg Blaydes & Nathan Hicks
1938 W. Leestown Rd.
Midway, KY 40347
(859) 338-9402

TRIPLE K LIMOUSIN

Brad Kidd
8254 Hwy 711
West Liberty, KY 41472
(606) 495-6396



**KK SEEDSTOCK CONSULTANTS
SPECIALIZED SALES**
2300 Monument Ave., Richmond, VA 23220
Keith Kissee • Cell: 817-821-6263
Ph: 804-353-2220 • Fax: 804-353-2221
email: kkseestock@comcast.net

2010 SHOW PROGRAM

FEMALES

PLACING	LOT #	NAME	DATE OF BIRTH	CONSIGNOR
	36	ENGD WILDCAT 9111W	SEP 02, 2009	ENGLEWOOD FARMS
	35	CJLM LEXIE 678W	MAY 30, 2009	MASSEY LIMOUSIN
	34	FREEDS WITCHY WOMAN	MAY 20, 2009	JON FREED
	33	MISS ATLANTIC 27W	MAY 12, 2009	DOUBLE O LIMOUSIN
	32	JLWM LUCY 932W	MAY11,2009	JP'S LEE HILL FARMS
	31	CJLM 643W	MAY 5, 2009	MASSEY LIMOUSIN
	30	MISS LESTER 28W	APRIL 25, 2009	DOUBLE O LIMOUSIN
	29	FWLY MARIAH	APR 23, 2009	FAWLEY FARMS
	28	HB STARSTRUCK 932W	APR 23, 2009	HB FARMS
	27	HOT STUFF 29W	APR 21, 2009	DOUBLE O LIMOUSIN
	26	GMEG FOXY	APR 15, 2009	FAWLEY FARMS
	25	LF MISTY KISS 11W	MAR 20,2009	LIGHT FARMS
	24	BLEL BLACKCAP 922W	MAR 18, 2009	HB FARMS/ETHINGTON LIMOUSIN
	23	CJLM 535W	MAR 15, 2009	MASSEY LIMOUSIN
	22	DOUBLE K BAYDOLL 353W	MAR 7, 2009	DOUBLE K LIMOUSIN
	21	JLWM WAVE MOON 9211W	MAR 2, 2009	JP'S LEE HILL FARMS
	20	ENGD WILMA 904W	FEB 9, 2009	ENGLEWOOD FARMS
	19	TGBF WAVERLEY 307W	JAN 15, 2009	THE GLEBE LIMOUSIN FARM
	18	PDKJ WHITNEY	JAN 5, 2009	TRIPLE K LIMOUSIN
	17	FREEDS WHY NOT	JAN 3, 2009	JON FREED
	16	LHMT MONTANA 22U	NOV 22, 2008	LIGHT FARMS
	15	JLWM LOLLIPOP 8136U	OCT 19, 2008	JP'S LEE HILL FARMS
	14	HB KYRA 824U	APR 2, 2008	HB FARMS

CALF CHAMPION FEMALE _____ RES. CALF CHAMPION FEMALE _____

JUNIOR CHAMPION FEMALE _____ RES. JUNIOR CHAMPION FEMALE _____

SENIOR CHAMPION FEMALE _____ RES. SENIOR CHAMPION FEMALE _____

GRAND CHAMPION FEMALE _____ RES. GRAND CHAMPION FEMALE _____

BULLS

PLACING	LOT #	NAME	DATE OF BIRTH	CONSIGNOR
	13	GMLY SCION	MAY 8, 2009	FAWLEY FARMS
	12	WLBL LETS GO RACING 933W	APR 24, 2009	HB FARMS
	11	LEGACY'S WARM UP	MAR 29, 2009	LEGACY FARMS
	10	CJLM 578W	MAR 24, 2009	MASSEY LIMOUSIN
	9	GTF WATCHMAN	MAR 20, 2009	DOUBLE H FARM
	8	GMLY MASON	MAR 17, 2009	FAWLEY FARMS
	7	EF WILD AT HEART	MAR 15, 2009	QUAIL RIDGE LIMOUSIN
	6	JLWM PABLO 9120W	MAR 6, 2009	JP'S LEE HILL FARMS
	5	LEGACY'S WALKER	JAN 31, 2009	LEGACY FARMS
	4	CJLM 522W	JAN 1, 2009	MASSEY LIMOUSIN
	3	FREEDS WHO'S THE MAN	JAN 1, 2009	JON FREED
	2	JLWM SHOTGUN 8238U	SEP 7, 2008	JP'S LEE HILL FARMS
	1	OKF UNCONDITIONAL 316U	JUNE 26, 2008	LIGHT FARMS

CALF CHAMPION BULL _____ RES. CALF CHAMPION BULL _____

JUNIOR CHAMPION BULL _____ RES. JUNIOR CHAMPION BULL _____

SENIOR CHAMPION BULL _____ RES. SENIOR CHAMPION BULL _____

GRAND CHAMPION BULL _____ RES. GRAND CHAMPION BULL _____

LIMOUSIN

SHOW AND SALE

Sale Bulls



Light Farms

PUREBRED(100/87.0) • BULL • DBL POLLED • DBL BLACK
1 OKF Unconditional 316U
 06/26/2008 • DDNC316U • NPM1911913

BW 70
WW
YW

EXLR DAKOTA 353G
 DFLC JET SET BPC 34Y
 WULFS DAWSON 4421D
 AMBL LUVLY 340Y
 WULF'S COUNT DOWN 9251C
 CANE RIDGE DAPHNE 011D
 CHAZ FIRST CHOICE 6004F
 DSUL TOO SWEET 55EA

AUTO BLACK DAKOTA 129J
 EXLR NEW GENERATION 071M
 EXLR LUVLY 084F

EXLR DAKOTA 353G
 CARROUSELS NICE PACKAGE
 DSUL MS SWEETNESS 232H

CED	BW	WW	YW	MA	CEM	SC	ST	DOC	CW	RE	YG	MB	\$M
7	2.3	43	86	23	4	.2		16	22	0.30	-0.04	0.05	41

Reserve Division Champion 2009 NAILE
Grand Champion 2009 Appalachian Fair
Division Champion 2009 Georgia National Fair
Reserve Division Champion 2009 Eastern Regional Show

OKF Unconditional 316U is one of the good young herdsires available today. The coming two year old bull is sired by the former National Western Grand Champion EXLR New Generation 071M. He is from the prolific donor female, Carrouseles Nice Package, the daughter of EXLR Dakota 353G. Several Generations of championship genetics are represented in this herdsire and one of the best from Light Farms.



OKF Unconditional 316U - Lot 1

JP's Lee Hill Farms

PUREBRED(100/89.0) • BULL • HOMO POLLED • HOMO BLACK
2 JLWM Shotgun 8238U
 09/07/2008 • JLWM8238U • NPM1936371

BW 82
WW 618
YW

BLACK DIAMOND
 QUAIL RUN RAMONA BP
 WULFS RAMBLER 8400X
 TUBB MISS P UPDATE 089Y
 COLE FIRST DOWN 46D
 CHAZ MISS ROXANNE 92C
 WULF'S POLLED PROGRESS
 HC EXTRAORDINARY HCR 61X

AUTO BLACK DAKOTA 129J
 CARROUSELS PURE POWER
 TUBB FIRST CLASS 666F

CHAZ FIRST CHOICE 6004F
 WILLOWS MOON DANCE 114L
 QUAIL RUN PROGRESS BPHP

CED	BW	WW	YW	MA	CEM	SC	ST	DOC	CW	RE	YG	MB	\$M
3	3.0	46	81	19	1	0.3		8	24	0.42	0.01	-0.02	43

JLWM Shotgun 8238U is homozygous polled and homozygous black and is from one of the proven cow families and genetic lines made famous at the JP's Lee Hill Farm. His dam has long been a major producer of performance and fertility and she has mated successfully with a variety of herdsires. JLWM Shotgun 8238U is a ready to use double homozygous herdsire of the highest quality.



Carrouseles Pure Power - Sire of Lot 2

Jon Freed

LIM-FLEX (50) • BULL • DBL POLLED • HOMO BLACK
3 Freeds Who's The Man
 01/01/2009 • JONF 180W

BW
WW
YW

BLACK DIAMOND
 QUAIL RUN RAMONA BP
 BLACK CAT DHAN 152G
 GPFF AMBER JO
 CONNEALY DATELINE
 VERMILION BLACKBIRD 5044
 PRODIGY 5001 OF B C A R
 BLACKBIRD 5196 B C A R

GPFF BLAQUE RULON
 DHVO DEUCE 132R
 AMY JO DHAN 20L

VERMILION DATELINE 7078
 R W A BLACKBIRD 3007
 BLACKBIRD 8224 B C A R

CED	BW	WW	YW	MA	CEM	SC	ST	DOC	CW	RE	YG	MB	\$M
7	1.5	63	111	26	-1				43	0.24	0.20	0.05	49

Freeds Who's The Man is a Lim-Flex herd sire by the popular DHVO Deuce 132R. This is an excellent herd sire prospect from Jon Freed's good herd. He is a flushmate to the Grand Champion Lim-Flex female at the 2009 Georgia National Show. This Lim-Flex bull is bred identically to some of the most popular Lim-Flex seedstock in the industry.



DHVO Deuce 132R - Sire of Lot 3



LIMOUSIN SHOW AND SALE

Sale Bulls



MINE Pld Shalimar 9020J - Dam of Lot 4

Massey Limousin

LIM-FLEX (50) • BULL • DBL POLLED • DBL BLACK
CJLM 552W
 01/01/2009 • CJLM 552W

4

BR MIDLAND
 MAGS SCOTLAND
 MAGS MARQUEE

COLE FIRST DOWN 46D
 MINE PLD SHALIMAR 9020J
 CANE RIDGE SOUTHERN TIMES

TWIN VALLEY PRECISIONE161
 BR ROYAL LASS 7036-19
 EXLR DAKOTA 353G
 MAGS JEWEL
 LKCC TOMAHAWKS TOUCHDOWN
 2 155P
 SY HEAVY HITTER 313W
 CANE RIDGE SOUTHERN LADY

CED	BW	WW	YW	MA	CEM	SC	ST	DOC	CW	RE	YG	MB	\$M
7	1.1	45	88	23	5	0.6	-	13	17	-0.08	0.23	0.3	53

This is a stout-made Lim-Flex bull sired by the popular MAGS Scotland. He is from the powerful donor female from the Massey program. He is one of the good bulls to ever be offered by Massey Limousin. The January-born bull will be ready for service soon after sale time. He is a great young Lim-Flex sire from a great Kentucky program of Massey Limousin.



Legacy's Walker - Lot 5

Legacy Farms

PERCENTAGE(88/78.2) • BULL • POLLED • DBL BLACK
Legacy's Walker
 01/31/2009 • LGCY21W • NXM1934390

5

WULFS KLINT 5874K
 WULFS PATHFINDER 1722P
 WILLOWS DAKOTA FIFTY 122L

HEAVENS BLACK NARCISSUS
 LEGACY'S REVLONL
 L7 KASSIE 014K

WULFS RAMBLER 8400X
 WULFS EXAMPLE 5074E
 EXLR DAKOTA 353G
 FOUNDATION COW
 DJ GENTLEMAN IN BLACK
 MAGS GENERAL CONSENSUS
 CHAZ FIRST CHOICE 6004F
 MISS L7 207B

CED	BW	WW	YW	MA	CEM	SC	ST	DOC	CW	RE	YG	MB	\$M
3	3.9	50	90	19	3	0.3		28	0.54	-0.02	0.06	43	

Legacy Walker is from one of the best cow families from the Legacy Farms cow herd. The bred-in efficiency of the cow family has resulted in this big bodied herdsire. If performance and growth are important to a breeding program, this son of Wulfs Pathfinder is one of superior sources of both.



KRVN Pablo 011P - Sire of Lot 6

JP's Lee Hill Farms

PUREBRED(100/88.3) • BULL • HOMO POLLED • BLACK
JLWM Pablo 9120W
 03/06/2009 • JLWM9102W • NPM1936028

6

GPF BLAQUE RULON
 KRVN PABLO 011P
 EXLR MISS HERITAGE 7384L

AUTO BLACK DAKOTA 129J
 JLWM LA RITA ROUGE 4101P
 EXLR 402J

BLACK DIAMOND
 QUAIL RUN RAMONA BP
 EXLR HERITAGE 056H
 EXLR 189G
 EXLR DAKOTA 353G
 DFCL JET SET BPC 34Y
 EXLR POLLED BENCHMARK709G
 IVLS REBECA

CED	BW	WW	YW	MA	CEM	SC	ST	DOC	CW	RE	YG	MB	\$M
3	3.7	54	98	25	-2	0.5		19	22	0.53	-0.03	-0.12	42

JLWM Pablo 9102W is a tremendous purebred son of KRVN Pablo 011P. His dam and granddam are among the best female individuals in the JP's Lee Hill Farms program. Both are donor females and represent the absolute best from the IVLS Rebeca cow family.

Few programs have supported the Kentucky Beef Expo any longer than JP's Lee Hill Farm. It is one of the best programs in the nation and the offering in the Expo is one of the very best.

LIMOUSIN SHOW AND SALE

Sale Bulls



Quail Ridge Limousin

7 LIM-FLEX(68/61.6) • BULL • DBL POLLED • HOMO BLACK
EF Wild at Heart
 03/15/2009 • ACET104W • LFM1927827

BW	84
WW	770
YW	

GPF BLAQUE RULON
 EF TUNE UP 210T
 DSUL BEDAZZLED 497K

DHVO DEUCE 132R
 MAGS TENDERHEARTED
 THOMAS PATRICIA 1897

BLACK DIAMOND
 QUAIL RUN RAMONA BP
 CHAZ FIRST CHOICE 6004F
 DSUL SULLIVAN'S MARIA
 GPF BLAQUE RULON
 AMY JO DHAN 20L
 GAR PRECISION 1680
 THOMAS PATRICIA 1176

CED	BW	WW	YW	MA	CEM	SC	ST	DOC	CW	RE	YG	MB	\$M
5	0.9	56	98	27	0	0.5			34	0.36	0.11	0.11	50

EF Wild at Heart is a tremendously thick yearling Lim-Flex son of EF Tune Up 210T. His dam was one of the most popular Lim-Flex females when she was campaigned by the Etherton program. EF Wild at Heart, along with his dam, were the Grand Champion Lim-Flex pair at the 2009 All American Futurity. He is the perfect Lim-Flex sire for a purebred or commercial breeding program.



EF Wild at Heart - Lot 7

Fawley Farms

8 LIM-FLEX(75/69.1) • BULL • POLLED • DBL BLACK
GMLY Mason
 03/17/2009 • GMLY931W • LFM1944069

BW	80
WW	704
YW	

KRVN NASKAR 013N
 LOGANS REMIX 303T
 G H G FOREVER LADY 565

WORD HALFBACK
 FWLY MAYBE BABY
 TFWLY MARISA 818

GPF BLAQUE RULON
 WL JU JU GAL 149J
 RITO 112 OF 2536 RITO 616
 XXG FOR EVER LADY Z1
 WULFS QUARTERBACK 4222B
 VORT DANDI 438D
 WADDLES CLEAR CHOICE 360
 FWLY ANJANETTA 143

CED	BW	WW	YW	MA	CEM	SC	ST	DOC	CW	RE	YG	MB	\$M
11	-0.2	47	88	20	4	0.4							

GMLY Madison is sired by the now deceased Logan's Remix 303T, the former Kentucky Beef Expo Grand Champion Bull. This March-born bull calf is from the popular FWLY Maybe Baby cow family that has a storied history of producing the best. GMLY Madison is one of the good herdsires produced in the Fawley program.



GMLY Mason - Lot 8

Double H Farm

9 PUREBRED(100/89.8) • BULL • POLLED • HOMO BLACK
GTF Watchman
 03/20/2009 • TFOS103W • NPM1945316

BW	80
WW	
YW	

GPF BLAQUE RULON
 MAGS SAVAGE
 MAGS MANDA

EXLR NATIVE 7133N
 GTF THREE LITTLE KISSES
 EF SHADOW DANCER 209N

BLACK DIAMOND
 QUAIL RUN RAMONA BP
 EXLR DAKOTA 353G
 MAGS JEWEL
 EXLR JUDO 459J
 TRAK EXLR ANNIE
 AUTO BLACK DAKOTA 129J
 EXLR 231J

CED	BW	WW	YW	MA	CEM	SC	ST	DOC	CW	RE	YG	MB	\$M
2	2.8	43	80	24	1	0.4		20	19	0.59	-0.02	-0.09	40

GTF Watchman is an outstanding son of the highly syndicated bull MAGS Savage. His dam is an EXLR native daughter out of the Reserve Junior National Champion in 2005 that was valued at \$30,000. This homozygous black herdsire was second in his class at the National Western and is ready to go to work in any breeding program.



GTF Watchman - Lot 9



LIMOUSIN SHOW AND SALE

Sale Bulls

PAGE 8

Massey Limousin



10

LIM-FLEX (50) • BULL • POLLED • BLACK

CJLM 578W

03/24/2009 • CJLM 578W

BW
WW
YW

S A F FOCUS OF E R
MYTTY IN FOCUS
MYTTY COUNTESS 906

EXLR EXCELLANTE 251L
MINE6209S
MINE SAVANNAH 9087J

S A F FAME
G D A R FOREVER LADY 246
SITZ ALLIANCE 6595
BALDRIDGE COUNTESS 357
EXLR POLLED RESOLVE 175G
EXLR 199H
CHAZ FIRST CHOICE 6004F
MBLB HARVEST LADY 207C

CED	BW	WW	YW	MA	CEM	SC	ST	DOC	CW	RE	YG	MB	\$M
7	-0.3	54	99	32	-1	0.4		27	28	0.13	0.35	0.24	53

This Massey Limousin consignment is a powerful son of the Angus sire, MYTTY In Focus, one of the most highly used bulls in the Angus breed. His dam is a productive daughter of EXLR Excellante 251L. All traits of the most importance are balanced in the young sire. He would be a great sire to consider for heifers.



WLBL Let's Go Racing 933W - Lot 12

Legacy Farms



11

PERCENTAGE(87/80.6) • BULL • POLLED • DBL BLACK

Legacy's Warm Up

03/29/2009 • LGCY329W • NXM1945400

BW 100
WW 751
YW

WULFS KLINT 5874K
WULFS PATHFINDER 1722P
WILLOWS DAKOTA FIFTY 122L

HEAVENS KRYPTONITE
LEGACY'S PEGGY
JRDN KASH GIRL

WULFS RAMBLER 8400X
WULFS EXAMPLE 5074E
EXLR DAKOTA 353G
FOUNDATION COW
CHAZ FIRST CHOICE 6004F
HEAVEN'S MAYA
LISD TATTOO
MINE PLD COLD WENCH 346G

CED	BW	WW	YW	MA	CEM	SC	ST	DOC	CW	RE	YG	MB	\$M
2	4.1	47	87	28	0	0.4							

Legacy Warm Up is a tremendously muscled and powerful herdsire from the Legacy program. Exceptional performance and maternal traits have been combined in this individual.

The Legacy program is steeped with breed-leading performance and customer acceptance. This bull is a great example of their breeding program.

HB Farms



12

PUREBRED(100/89.5) • BULL • DBL POLLED • RED

WLBL Let's Go Racing 933W

04/24/2009 • WLBL933W • NPM1932948

BW 85
WW 727
YW

GPF BLAQUE RULON
KRVN NASKAR 013N
WL JU JU GAL 149J

EF MAIN STAY 541M
EXLR BLACK STARR 7104R
EXLR BLACK STARR 342G

BLACK DIAMOND
QUAIL RUN RAMONA BP
COLE FIRST DOWN 46D
CHR GOSSIP GAL
AUTO BLACK DAKOTA 129J
EXLR 231J
WULF'S COUNT DOWN 9251C
MINE PLD BLACK STARR 312E

CED	BW	WW	YW	MA	CEM	SC	ST	DOC	CW	RE	YG	MB	\$M
5	2.6	47	87	21	3	0.7		16	1	0.38	-0.02	-0.17	38

WLBL Lets Go Racing 933W is one of the greatest sons of KRVN Naskar 013N ever born. The powerful individual is from the HB Farms program and he has emerged as one of the best ever from the program.

WLBL Lets Go Racing 933W is from a daughter of EF Main Stay 561N that was a former show heifer for Drew Blaydes. The superb and fault-free herdsire has unbelievable potential as a breed leader in the future of the industry.



GMLY Scion - Lot 13

Famley Farms



13

PUREBRED(100/91.1) • BULL • DBL POLLED • DBL BLACK

GMLY Scion

05/08/2009 • GMLY945W • NPM1944070

BW 80
WW 679
YW

KRVN NASKAR 013N
WLR DIRECT HIT
MAGS NIGHT AMBUSH

FWLY SMOKEN GUN 253
GMLY SADIE 425
EF 153M

GPF BLAQUE RULON
WL JU JU GAL 149J
AUTO BLACK DAKOTA 129J
MISS WULFETTE 6230F
SLDJ POLLED EQUITY
FWLY JAMARA 454
EXLR LIMITED EDITION 765J
EXLR 231J

CED	BW	WW	YW	MA	CEM	SC	ST	DOC	CW	RE	YG	MB	\$M
7	2.4	40	76	23	3	0.3							

GMLY Scion is sired by the popular WLR Direct Hit, the son of KRVN Naskar 013N. Countless champions have been produced from this cow family that trace back to EXLR 231J, the dam of EF Main Stay. Strictly herdsire caliber genetics are available with this great prospect.

LIMOUSIN SHOW AND SALE

Sale Females



HB Farms

PUREBRED(93/82.0) • FEMALE • DBL POLLED • DBL BLACK

14 HB Kyra 824U

04/02/2008 • HBBH824U • NPF1903306

AUTO BLACK DAKOTA 129J
EXLR NOBLEMAN 593N
EXLR 589F

WULFS NAPOLEON 1018N
MIVA 530R
MIVA 208M

EXLR DAKOTA 353G
DFLC JET SET BPC 34Y
LKCC EXPRESSWAY 193C
KHLR M12A
WULFS KEYSTONE 7522K
WULFS LOTION 1018L
COLE FIRST MICHELIN 63K
COLE KYRA 13K

BW 84
WW 546
YW 995

CED	BW	WW	YW	MA	CEM	SC	ST	DOC	CW	RE	YG	MB	\$M
5	4.4	47	94	19	2	0.6		19	30	0.59	0.00	-0.02	44

AI 6-3-09 to Wulfs Ransom due 3-15-10

HB Kyra 824U is one of the good bred heifers to sell at the Kentucky Beef Expo. The daughter of EXLR Nobleman 593N is an exceptional female from the HB Farms program. She is from a broody and big bodied daughter of Wulfs Napoleon 1018N from some of the most significant performance and maternal lines in the industry.

She carries the service of the popular Wulfs Ransom.



HB Kyra 824U - Lot 14

JP's Lee Hill Farms

PUREBRED(100/90.8) • FEMALE • POLLED • RED

15 JLWM Lollipop 8136U

10/19/2008 • JLWM8136U • NPF1915008

ROMN JUSTICE
JLWM DIRE STRAYTS 4109P
CORL TEMPTTEST 52G

MAGS KABOOM
JLWM ALANDA 4129P
DVFC SPICE COOKIE 402G

ROMN FORTUNE
ROMN LADY ROCK 57G
CANE RIDGE POLLED WYAT
CANE RIDGE TEMPTRESS 404W
EXLR DAKOTA 353G
MAGS GO IN STYLE
SLDJ POLLED EQUITY
SIVL SUGAR COOKIE

BW 70
WW 508
YW

CED	BW	WW	YW	MA	CEM	SC	ST	DOC	CW	RE	YG	MB	\$M
9	0.0	36	69	22	3	0.7		12	19	0.40	-0.05	-0.03	40

AI 12-1-09 to Wulfs Shop Talk due 9-17-10

JLWM Lollipop 8136U is sired by the popular JLWM Dire Strayts 4109P, the son of ROMN Justice. She is from a daughter of MAGS Kaboom that traces back to the EAFM Cookie family.

This powerful female carries the service of the popular Wulfs Shop Talk, the son of Carrousel Pure Power.



JLWM Dire Strayts 4109P - Sire of Lot 15

Light Farms

PUREBRED(100/89.0) • FEMALE • DBL POLLED • DBL BLACK

16 LIHT Montana 22U

11/22/2008 • LIHT022U • NPF1935089

HUNT MR JOCK 44J
WULFS REALTOR 1503R
WULFS LENA 1503L

SIVL FORTUNE COOKIE 6187F
ANLC 81H
COLE 36F

IVLS POLLED JUSTICE 0601E
HUNT MISS GIGGLE 129G
WULFS GUARDIAN 5074G
MISS WULFETTE 9309J
SIVL BLACK OXEN 190D
SIVL LADY COOKIE 93C
COLE FIRST DOWN 46D
COLE 418D

BW 71
WW 632
YW 992

CED	BW	WW	YW	MA	CEM	SC	ST	DOC	CW	RE	YG	MB	\$M
5	3.6	54	99	16	6	0.6		20	28	0.64	-0.12	-0.01	47

AI 1-16-10 to KRVN Naskar 013N due 10-29-10

LIHT Montana 22U is sired by the popular Wulfs Realtor 1503R. The female ranks in the top 10% of the breed for both weaning and yearling weight EPDS. She combines some of the best traits of the Limousin breed and she is a great example of the quality found in the Light program.



Wulfs Realtor 1503R - Sire of Lot 16



LIMOUSIN SHOW AND SALE

Sale Females

Jon Freed

LIM-FLEX(25/22.1) • FEMALE • DBL POLLED • DBL BLACK

BW 75
WW
YW



17

Freed's Why Not

01/03/2009 • JONF19W • LFF1945994

EF MAIN STAY 541M
EF SMACK DOWN 764S
M L PRUDENCE 427

AUTO BLACK DAKOTA 129J
EXLR 231J
V A R GATEWAY 4101
M L PRUDENCE 9014
OGL BATTLE CRY 427 128
E A F EISA ERICA 9419
EVALUATION 454
BARBARA EILEEN 598

C J BATTLE CRY 310K
Z B A F SUZIE 622
MDR BARBARA EILEEN709 454

CED	BW	WW	YW	MA	CEM	SC	ST	DOC	CW	RE	YG	MB	\$M
7	-2.0	33	70	26	2				-3	-0.24	0.11	0.01	39

Open

This an outstanding daughter of EF Smack Down 764S. The Lim-Flex female is from a productive Angus cow for the Freed program. The breed is in good hands with young Lim-Flex females such as this one consigned by Jonathan Freed.



HC Final Time 407 - Sire of Lot 19



Auto Dollar General 122R - Sire of Lot 20

Triple K Limousin

PUREBRED(100/87.3) • FEMALE • HOMO POLLED • DBL BLACK

BW 71
WW 719
YW



18

PDKJ Whitney

01/05/2009 • PDKJ58W • NPF1948310

GPFF BLAQUE RULON
KRVN NASKAR 013N
WL JU JU GAL 149J

BLACK DIAMOND
QUAIL RUN RAMONA BP
COLE FIRST DOWN 46D
CHR GOSSIP GAL
EXLR POLLED RESOLVE 175G
EXLR 199H
DVFC COOKIE MONSTER 108H
EXLR 172G

EXLR EXCELLANTE 251L
PDKJ BLACK BEAUTY 26R
EXLR LIBERTY 762N

CED	BW	WW	YW	MA	CEM	SC	ST	DOC	CW	RE	YG	MB	\$M
7	0.9	39	69	22	1	1.0		18	21	0.46	-0.02	-0.11	37

Open

PDKJ Whitney is homozygous polled and homozygous black (pending). The daughter of the popular KRVN Naskar 013N is from a good milking family line. She has a great disposition and she is a superior show heifer and future brood cow. She is a great consignment from the Kidd family.

The Glebe Limousin Farm

PUREBRED(100/88.5) • FEMALE • HOMO POLLED • RED

BW 87
WW 663
YW



19

TGBF Waverley 307W

01/15/2009 • TGBF307W • NPF1939900

HC OVERTIME 972
HC FINAL TIME 407
HC POLLED CANDY 763

HC OVERTIME 756
HC DYNASTY 215
YKCC ATLANTIC 397N
HC BLACK CANDY 466
WULFS FANFARE 4055F
MISS WULFETTE 1212L
WZRK GENESIS 532E
RUDO JOAN

WULFS NASA 1212N
WULFS RESEMBLANCE 5110R
WULFS MERDYCE 2291M

CED	BW	WW	YW	MA	CEM	SC	ST	DOC	CW	RE	YG	MB	\$M
4	5.2	56	100	19	4	1.0		21	21	0.59	-0.13	0.05	50

Open

TGBF Waverley 307W is a powerful consignment from The Glebe Limousin Farm. She is a perfect blend of performance and maternal traits with tremendous numbers for both weaning and yearling EPDS. Her dam is the great Wulfs Resemblance 5110R, the daughter of Wulfs Nasa. The progeny of HC Final Time 407 are highly appreciated within the breed.

Englewood Farms

PUREBRED(100/89.8) • FEMALE • POLLED • HOMO BLACK

BW 78
WW 673
YW



20

ENG Wilma 904W

02/09/2009 • ENGD904W • NPF1930390

IVLS SECRET WEAPON 4408K
AUTO DOLLAR GENERAL 122R
AUTO KYRIA 232K

IVLS FARMER 4G
IVLS 408H
AUTO HACKETT 702H
WULFS HAPPINESS 8136H
WULFS HAPPINESS 8136H
COLE 9135J
WADDLES COBALT 3106
COLE 115G

COLE BLACK TANK 24P
COLE MISS BLACK TANK 711T
COLE 912J

CED	BW	WW	YW	MA	CEM	SC	ST	DOC	CW	RE	YG	MB	\$M
7	1.6	60	107	24	6	0.8		15	42	0.55	0.01	0.09	51

Open

ENG Wilma 904W is a flashy heifer from the Englewood transplant program. Sired by AUTO Dollar General 122R, and from a top daughter of Black Tank 24P, this female combines the many traits in demand today. She, like all daughters of AUTO Dollar General 122R will make a productive and good-milking female. She has some of the best EPDS in the sale offering.

LIMOUSIN SHOW AND SALE

Sale Females



JP's Lee Hill Farms

21 PUREBRED(100/85.3) • FEMALE • DBL POLLED • DBL BLACK
JLWM Wave Moon 921IW BW 80
 03/02/2009 • JLWM9211W • NPF1939088 WW 80
 YW 80
 COLE WOLF HUNT
 IVLS TOP CRITERIA 8862P
 IVLS8862M
 LESF ASPHALT 9N
 JLWM BLACK NARCISSUS 6239
 WILLOWS MOON DANCE 114L
 COLE FIRST DOWN 46D
 COLE CATALINA 3309C
 WZRK BIG KAHUNA 8046K
 IVLS 3862G
 GPFF BLAQUE RULON
 GPFF EXTRA SWEET ELITE
 CHAZ FIRST CHOICE 6004F
 QUAIL RUN PROGRESS BPHP

CED	BW	WW	YW	MA	CEM	SC	ST	DOC	CW	RE	YG	MB	\$M
8	.4	44	80	26	1	0.2		16	8	0.52	-0.11	-0.03	43

Open

JLWM Wave Moon 921IW is a tremendous female from the JP's Lee Hill program. The daughter of IVLS Top Criteria is from the great cow family of Willows Moon Dance that has made such a big impact on the JP's Lee Hill herd. This is a great young female for the show ring and breeding pasture.



LVLS Top Criteria 8862P - Sire of Lot 21

Double K Limousin

22 PUREBRED(100/87.1) • FEMALE • DBL POLLED • DBL BLACK
Double K Baydoll 353W BW 57
 03/07/2009 • WKBK353W • NPF1946872 WW 683
 YW 683
 COLE FIRST DOWN 46D
 COLE WOLF HUNT
 COLE CATALINA 3309C
 HUNTS HI-LITER 245G
 JCL MISS HI LITER 353N
 KLRI 106B
 LKCC TOMAHAWKS TOUCHDOWN
 2 155P
 MAYS BLACK JET
 COLE 21 R
 WADDLES COBALT 3106
 TNUH MISS C245
 MICHELIN'S 291X
 PATRICK GENDARME 010K

CED	BW	WW	YW	MA	CEM	SC	ST	DOC	CW	RE	YG	MB	\$M
14	-0.1	38	72	6	4	0.3	22	23	11	0.52	-0.15	0.03	44

Open

Double K Baydoll 353W is a flashy daughter of COLE Wulf Hunt. She is from the Double K breeding program, and she is from a good-producing daughter of HUNTS Hi Liter 353N. The yearling female has good potential as a good milking cow, as do all daughters of COLE Wulf Hunt.

Massey Limousin

23 PUREBRED • FEMALE • POLLED • BLACK
CJLM 535W BW 57
 03/15/2009 • CJLM 535W WW 683
 YW 683
 EXLR NEW GENERATION 071M
 CMIL NEW GENERATION 555R
 H&H POLLED TRACY
 EXLR JUDO 459J
 TUBB JUDO 535R
 TUBB THUNDER 394N
 AUTO BLACK DAKOTA 129J
 EXLR LUVLY 084F
 CABIN CREEK BLACKMAIL 69F
 CANE RIDGE POLL LUCY 377B
 WULFS GUARDIAN 5074G
 CM POLLED KATIE
 AUTO THUNDER RODE 735K
 CHR JEENA LEE

CED	BW	WW	YW	MA	CEM	SC	ST	DOC	CW	RE	YG	MB	\$M
6	3.5	52	94	19	4	0.1		13	17	0.37	-0.04	-0.08	43

Open

Nice, balanced numbers are a part of this female's pedigree. The polled and black female is from a great foundation female in the Massey program. The March-born female will soon be ready for breeding.

HB Farms & Ehington Limousin

24 LIM-FLEX(62/55.9) • FEMALE • DBL POLLED • DBL BLACK
BLEL Blackcap 922W BW 65
 03/18/2009 • BLEL922W • LFF1932925 WW 593
 YW 593
 KRVN NASKAR 013N
 LOGANS REMIX 303T
 G H G FOREVER LADY 565
 WULFS NOBEL PRIZE 3861N
 BLEL BLACKCAP 710T
 EXLR BLACKCAP 254L
 GPFF BLAQUE RULON
 WL JU JU GAL 149J
 RITO 112 OF 2536 RITO 616
 XXG FOR EVER LADY Z1
 COLE WOLF HUNT
 WULF'S CASUAL 3161C
 WULFS FANFARE 4055F
 WK BLACKCAP 3712

CED	BW	WW	YW	MA	CEM	SC	ST	DOC	CW	RE	YG	MB	\$M
8	-2.0	42	79	25	3	0.4							

Open

BLEL Blackcap 922W is a flashy heifer calf by the popular Logan's Remix 303T. From a daughter of Wulfs Nobel Prize 3861N, the Lim-Flex female is one of fault-free genetic possibilities. Several great ones have been born from this great proven cow family. Homozygous polled and black tests are pending.



Logans Remix 303T - Sire of Lot 24



LIMOUSIN SHOW AND SALE

Sale Females

PAGE 12

Light Farms

PUREBRED • FEMALE • DBL POLLED • DBL BLACK
25 **LF Misty Kiss 11W**
 03/20/2009 • LIHT 11W

COLE FIRST DOWN 46D DJ GENTLEMAN IN BLACK DJ ESSENCE JCL LODESTAR 27L JLWM MISTY EYES 5142R DVFC 962G	LKCC TOMAHAWKS TOUCHDOWN 2 155P WULF'S POLLED PROGRESS GOLDENVIEW THERESA GVC486 HUNTS HI-LITER 245G LOGAN'S CHEERLEADER 280G TUBB GRINDER 749D MISS WOLFETTE 9051X	BW 75 WW 723 YW
--	--	-----------------------

CED	BW	WW	YW	MA	CEM	SC	ST	DOC	CW	RE	YG	MB	\$M
13	2.5	45	89	28	12	0.4		16	30	0.37	0.00	0.08	47

Open

LF Misty Kiss 11W is a great young female from the Light program. The daughter of DJ Gentleman In Black is from a young daughter of JCL Lodestar 27L. The March-born heifer calf is the product of stacked genetic superiority and proven seedstock selection.

Fawley Farms

PUREBRED(93/82.6) • FEMALE • DBL POLLED • DBL BLACK
26 **GMEG Foxy**
 04/15/2009 • GMEG776W • NPF1944063

GPF BLAQUE RULON LESF ASPHALT 9N GPF EXTRA SWEET ELITE RADS BLACK PRODIGY EXLR HEIRESS 776R EXLR HEIRESS 7131L	BLACK DIAMOND QUAIL RUN RAMONA BP LKCC TOMAHAWKS TOUCHDOWN HC EXTRAORDINARY HCR 61X COLE FIRST DOWN 46D RADS POLL BLACK POWDER 1 EXLR LIMITED EDITION 765J EXLR 545J	BW 75 WW 723 YW
---	---	-----------------------

CED	BW	WW	YW	MA	CEM	SC	ST	DOC	CW	RE	YG	MB	\$M
4	2.1	34	66	24	-5	0.4		16	-3	0.24	-0.06	-0.06	38

Open

GMEG Foxy is an April heifer calf by the popular EXLR Asphalt 9N. The progeny of EXLR Asphalt 9N have long been among some of the most successful individuals in the herd. Her dam is a past successful show heifer and a significant breeding female in the Fawley program.

Double O Limousine Farms

PUREBRED(100/88.3) • FEMALE • DBL POLLED • DBL BLACK
27 **Hot Stuff 29W**
 04/21/2009 • MOLF29W • NPF1941665

GPF BLAQUE RULON MUSCLES RADIATION 516R EXLR BLACK MAGIC 778H AUTO BLACK DAKOTA 129J QUAIL RIDGE SIZZLE MAGS GET LUCKY	BLACK DIAMOND QUAIL RUN RAMONA BP WULFS FANFARE 4055F EXLR 755F EXLR DAKOTA 353G DFLC JET SET BPC 34Y COLE FIRST DOWN 46D YKCC MISS PUNCH 971P	BW 86 WW 653 YW
---	---	-----------------------

CED	BW	WW	YW	MA	CEM	SC	ST	DOC	CW	RE	YG	MB	\$M
3	3.2	53	93	26	4	0.7							

Open

Hot Stuff 29W is rich in quality seedstock from the Double O breeding program. The late April Heifer calf is an exceptional show prospect and has all the makings of a superior brood cow.



GMEG Foxy - Lot 26



HB Starstruck 932W- Lot 28

HB Farms

LIM-FLEX(75/66.0) • FEMALE • DBL POLLED • DBL BLACK
28 **HB Starstruck 932W**
 04/23/2009 • BNLM932W • LFF1932929

JCL LODESTAR 27L WZRK PRIMESTAR 861P WZRK MISS P ULTRA 861F WULFS NOBEL PRIZE 3861N MISS WULFETTE 6072S FOUNDATION COW	HUNTS HI-LITER 245G LOGAN'S CHEERLEADER 280G AD POLLED ULTRA 094B WZRK MISS TED 442B COLE WOLF HUNT WULF'S CASUAL 3161C	BW 81 WW 631 YW
---	--	-----------------------

CED	BW	WW	YW	MA	CEM	SC	ST	DOC	CW	RE	YG	MB	\$M
9	0.8	56	101	18	6	0.3		23	49	0.66	-0.05	0.08	50

Open

HB Starstruck 932W is an exceptional Lim-Flex female from HB Farms. She is the daughter of WZRK Primestar 861P. The late April heifer is by the popular WZRK Primestar 861P, the son of JCL Lodestar 27L. Her dam is 50% daughter of Wulf Nobel Prize 3861N. She is a tremendous Lim-Flex female that will serve as a superior brood cow prospect.

LIMOUSIN SHOW AND SALE

Sale Females



Fawley Farms

LIM-FLEX(75/68.2) • FEMALE • POLLED • DBL BLACK

BW 85
WW 638
YW



FWLY Mariah

04/23/2009 • FWLY943W • LFF1944061

KRVN NASKAR 013N
LOGANS REMIX 303T
G H G FOREVER LADY 565

GPPF BLAQUE RULON
WL JU JU GAL 149J
RITO 112 OF 2536 RITO 616
XXG FOR EVER LADY Z1
OTSS HARD CASH 0500Y
MISS WOLFETTE 9230X
SY POLLED REFLECTION
FWLY GOVERNESS 808

WADDLES CLEAR CHOICE 360N
FWLY MARISA 818S
FWLY ANJANETTA 143

CED	BW	WW	YW	MA	CEM	SC	ST	DOC	CW	RE	YG	MB	\$M
6	1.7	43	82	24	1	0.7							

Open

FWLY Mariah is an excellent Lim-Flex heifer by the good breeding Lim-Flex sire, Logan's Remix 303T. She traces to some of the very best and proven genetics in the Fawley program. The progeny of Logan's Remix 303T are making their debut in the 2010 Kentucky Beef Expo.



FWLY Mariah - Lot 29

Double O Limousin

PUREBRED(100/85.7) • FEMALE • DBL POLLED • DBL BLACK

BW 78
WW 537
YW



Miss Lester 28W

04/25/2009 • MOLF28W • NPF1941664

CARROUSELS NASDAQ
GMEG THE HEIR
GMEG THE HEIR

AUTO BLACK DAKOTA 129J
CARROUSELS JAMAICA
RADS BLACK PRODIGY
EXLR HEIRESS 7131L
JCL LODESTAR 27L
MINE PLD MIRANDA 2424M
LOGAN'S MAGIC JOHNSON143F
KAY

GMEG THE HEIR
GMEG THE HEIR
CJSH KAY

CED	BW	WW	YW	MA	CEM	SC	ST	DOC	CW	RE	YG	MB	\$M
9	1.3	30	66	18	6	0.2							

Open

Miss Lester 28W is a polled and black female sired by GMEG The Heir, a former Kentucky Beef Expo Champion. This Double O Limousin consignment has great potential as a future brood cow.

Massey Limousin

LIM-FLEX (50) • FEMALE • DBL POLLED • DBL BLACK

BW
WW
YW



CJLM 643W

05/05/2009 • CJLM 643W

AUTO DOLLAR GENERAL 122R
MAGS TWAIN
THOMAS PATRICIA 1911

IVIS SECRET WEAPON 4408K
AUTO KYRIA 232K
GAR PRECISION 1680
THOMAS PATRICIA 1176
GENETICS BY DESIGN 049
STEVENSON ZARA 4576
WULFS DAWSON 4421D
CANE RIDGE COURTNEY 016D

SIR WMS DESIGN 5762
MAGS PHILANA
MAGS COURTNEY 524M

CED	BW	WW	YW	MA	CEM	SC	ST	DOC	CW	RE	YG	MB	\$M
6	0.7	50	100	33	1	0.3		6	33	-0.10	0.39	0.33	54

Open

This May heifer is sired by the popular MAGS Twain, the Lim-Flex sire that has become so very popular throughout the industry. She is from a double-bred half blood mating that will add consistency and balance to the Lim-Flex breeding plan. Massey Limousin offers this female from deep within the breeding program to offer this heifer.

JP's Lee Hill Farms

LIM-FLEX (50) • FEMALE • DBL POLLED • DBL BLACK

BW
WW
YW



JLWM Lucy 932W

05/11/2009 • JLWM 932W

GAR PRECISION 1680
CFF NEW PRECISION 283
CFF CARA PRIDE 247

TEHAMA BANDO 155
9J9 GAR 856
B/R NEW DESIGN 036
WHITE FENCE PRIDE H1
AUTO BLACK DAKOTA 129J
EXLR REBECA 614H
KRMC BLACK LEGACY 917B
EXLR 735E

EXLR MAXIMUS 610M
JLWM MYRTLE 4263P
EXLR 7166H

CED	BW	WW	YW	MA	CEM	SC	ST	DOC	CW	RE	YG	MB	\$M
9	0.4	43	85	30	1	0.5		4	20	-0.26	0.25	0.37	55

Open

JLWM Lucy 932W is a beautiful May heifer from the JP's Lee Hill Farms. The Lim-Flex 50 female is by CFF New Precision 283, the excellent Angus sire. Her dam, JLWM Myrtle T263P is a productive purebred cow.



MAGS Twain - Sire of Lot 31



LIMOUSIN SHOW AND SALE

Sale Females

Double O Limousin

PUREBRED(100/87.5) • FEMALE • DBL POLLED • BLACK
33 Miss Atlantic 27W
 05/12/2009 • MOLF27W • NPF1941663

BW	80
WW	655
YW	

CARROUSELS NASDAQ
 GMEG THE HEIR
 GMEG THE HEIR 776R

MINE PLD BUD LITE 5742R
 KENWOOD ATLANTIC 19
 PRINCESS LADY

AUTO BLACK DAKOTA 129J
 CARROUSELS JAMAICA
 RADS BLACK PRODIG
 EXLR HEIRESS 7131L
 JCL LODESTAR 27L
 MINE PLD MIRANDA 2424M
 MANHATTAN DEE 14E
 SF LAZY LADY 8D

CED	BW	WW	YW	MA	CEM	SC	ST	DOC	CW	RE	YG	MB	\$M
8	2.9	42	78	23	4	0.3							

Open

Miss Atlantic 27W is a mid-May heifer calf from the Double O breeding program. The female has the necessary genetic profile to make a productive brood cow.

Jon Freed

PUREBRED • FEMALE • DBL POLLED • DBL BLACK
34 Freeds Witchy Woman
 05/20/2009 • JONF 796W

BW	
WW	
YW	

GPFF BLAQUE RULON
 KRNV STETSON 086S
 MAGS NELLIE

COLE FIRST DOWN 46D
 COLE 445P
 COLE 46E

BLACK DIAMOND
 QUAIL RUN RAMONA BP
 AUTO BLACK DAKOTA 129J
 AUTO NATASHA 273G
 LKCC TOMAHAWKS TOUCHDOWN
 2 155P
 WULFS BILLY BOY 4223B
 COLE 234B

CED	BW	WW	YW	MA	CEM	SC	ST	DOC	CW	RE	YG	MB	\$M
3	3.5	46	92	20	2	0.8		18	12	0.38	-0.07	-0.12	41

Open

Freeds Witchy Woman is a late May heifer calf from Jon Freed's good herd. The female is by their herdsire, KRNV Stetson 086S. She is from a proven daughter of COLE First Down and she is a balanced female both genotypically and phenotypically.

Massey Limousin

PUREBRED(100/91.8) • FEMALE • DBL POLLED • DBL BLACK
35 CJLM Lexie 678W
 05/30/2009 • CJLM678W • NPF1934124

BW	84
WW	
YW	

JCL LODESTAR 27L
 DVFC BLUE CHIP 234S
 DBRO GONE FISHING 415G

WULFS GUARDIAN 5074G
 DVFC LUVLY PRIDE 920L
 EXLR LUVLY 081F

HUNTS HI-LITER 245G
 LOGAN'S CHEERLEADER 280G
 WULFS QUARTERBACK 4222B
 WOFA POLLED SARAH 654C
 WULFS RAMBLER 8400X
 WULFS EXAMPLE 5074E
 WULFS DAWSON 4421D
 AMBL LUVLY 340Y

CED	BW	WW	YW	MA	CEM	SC	ST	DOC	CW	RE	YG	MB	\$M
9	2.3	48	92	20	5	0.2			30	0.69	-0.08	-0.10	41"

Open

Massey Limousin has generously donated this heifer calf to the Kentucky Limousin Association. The daughter of DVFC Blue Chip 6254S is from the great Luvly family that has become one of the dominant cow families in the industry. She has great numbers and she will prove to be a significant replacement female.

Raffle tickets will be sold for \$10 each until sale time by any Kentucky Limousin breeder or Junior Limousin member. The drawing for this female will be at the beginning of the sale. The owner of the winning ticket may choose to keep the female, or sell her through the sale.

Kentucky Junior Limousin Association Donation Heifer!



DVFC Blue Chip 234S - Sire of Lot 35

Englewood Farms

PUREBRED • FEMALE • DBL POLLED • DBL BLACK
36 ENGD Wildcat 911W
 09/02/2009 • ENGD911W

BW	70
WW	
YW	

GPFF BLAQUE RULON
 CTCR CRISS CROSS 6254S
 HAWS LIMITED EDITION

EXLR NEW GENERATION 071M
 MAGS RENEGADE GIRL
 MAGS LADY ACE

BLACK DIAMOND
 QUAIL RUN RAMONA BP
 WULFS DAWSON 4421D
 NP DEAR TO YOU 290F
 AUTO BLACK DAKOTA 129J
 EXLR LUVLY 084F
 EXLR INTRIGUE 361G
 CHAZ MISS GRETA 7003G

CED	BW	WW	YW	MA	CEM	SC	ST	DOC	CW	RE	YG	MB	\$M
3	3.7	63	103	24	1	0.6	20						

Open

ENGD Wildcat 911W is a full sister to ENGC Under the Gun 861U, the top-selling female that was purchased by Small and Sons Limousin through last year's Kentucky Beef Expo. She is from one of the top donor cows in the Englewood program, and her numbers are impressive and breed-leading. The September baby will make a remarkable show heifer.



ENGD Under The Gun 861U- Full Sib to Lot 36

LIMOUSIN SHOW AND SALE

Flush & Embryo Lots



Quail Ridge Limousin

PUREBRED • FEMALE • HOMO POLLED • BLACK

AUTO Black Bird 458P Embryo Flush

BW	75
WW	529
YW	766



37

AUTO ROUGH IDLE 141J
AUTO AMERICAN IDOL 162L
WULFS DELIGHT 4114D

WULF'S COUNT DOWN 9251C
AUTO BARBARA ANN 277H
AMBL LUVLY 340Y

JCL BLACK OUT
STBR DEMETRIA 669D
WULF'S CHALLENGER 6044Y
MISS WOLFETTE 9081X
LKCC TOMAHAWKS TOUCHDOWN
MISS WOLFETTE 9051X
TEXS RANGER TED
TEXS STAR LUV

CED	BW	WW	YW	MA	CEM	SC	ST	DOC	CW	RE	YG	MB	\$M
3	3.7	45	88	46	3	0.4		13	5	0.19	-0.02	0.05	46

Embryo Flush Guaranteeing 5 #1 embryos to the bull of buyer's choice

This is one of the best maternal pedigrees in the Limousin breed. Her remarkable maternal EPD is a testament to her maternal dominance in the industry. This beautiful female has produced some outstanding individuals through natural and ET mating throughout the industry.



AUTO Black Bird 458P - Lot 37

Englewood Farms

POLLED • BLACK

4 Frozen Embryos



38

KRVN NASKAR 013N
KYLD DAYTONA 730T
EXLR BLACKBIRD 7182R

EXLR NEW GENERATION 071M
MAGS RENEGADE GIRL
MAGS LADY ACE

GPF BLAQUE RULON
WL JU JU GAL 149J
EF MAIN STAY 541M
EXLR BLACKBIRD 5109J
AUTO BLACK DAKOTA 129J
EXLR LUVLY 084F
EXLR INTRIGUE 361G
CHAZ MISS GRETA 7003G

CED	BW	WW	YW	MA	CEM	SC	ST	DOC	CW	RE	YG	MB	\$M
7	2.0	46	87	26	3	0.6		14	22	0.46	0.07	0.01	43

These embryos are from the Englewood transplant program. Sired by KYLD Daytona 730T, the champion sire of profile and eye-appeal, these embryos should be make remarkably popular seedstock. The donor dam is a proven source of quality.



KYLD Daytona 730T - Sire of Lot 38

Englewood Farms

POLLED • BLACK

4 Frozen Embryos



39

HC OVERTIME 972
HC FINAL TIME 407
HC POLLED CANDY 763

EXLR NEW GENERATION 071M
MAGS RIVER WILD
MAGS LADY ACE

HC OVERTIME 756
HC DYNASTY 215
YKCC ATLANTIC 397N
HC BLACK CANDY 466
AUTO BLACK DAKOTA 129J
EXLR LUVLY 084F
EXLR INTRIGUE 361G
CHAZ MISS GRETA 7003G

CED	BW	WW	YW	MA	CEM	SC	ST	DOC	CW	RE	YG	MB	\$M
4	3.3	41	81	20	3	1.0		20	13	0.48	-0.06	0.05	45

These embryos are sired by the popular HC Final Time 407. This mating offers some outcross blood to the proven cow family of MAGS River Wild.



MAGS River Wild - Dam of Lot 30

Englewood Farms

POLLED • BLACK

4 Frozen Embryos



40

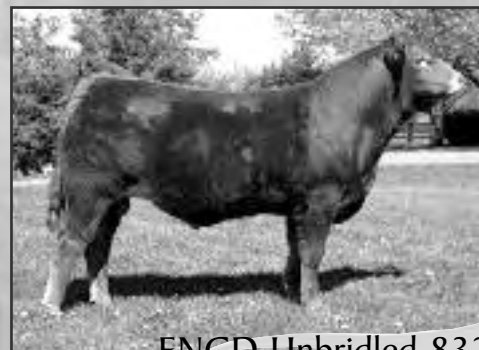
ENGD POLLED LIBERTY 283R
ENGD UNBRIDLED 832U
LENAPE APHIDR

EXLR LIMITED EDITION 765J
EXLR JUSTINE 626L
EXLR 199H

LENAPE POLLED LIBERTY
ANLC 10H
LENAPE WASATCH
QUAIL RUN LADYBUG
EXLR POLLED BENCHMARK709G
WULFS GLENDA 7021G
WULFS FANFARE 4055F
EXLR 558F

CED	BW	WW	YW	MA	CEM	SC	ST	DOC	CW	RE	YG	MB	\$M
8	2.3	48	80	30	4	0.6		10	30	0.43	0.03	0.01	45

These embryos are sired by the homozygous polled ENGD Unbridled 832U. The fullblood sires offers outcross blood to the proven blood of the EXLR 199H family line



ENGD Unbridled 832U - Sire of Lot 40



**KK SEEDSTOCK CONSULTANTS
SPECIALIZED SALES**

2300 Monument Ave., Richmond, VA 23220
Keith Kisse • Cell: 817-821-6263
Ph: 804-353-2220 • Fax: 804-353-2221
email: kkseedstock@comcast.net

**First Class
US Postage Paid
Fort Worth, TX
Permit # 356**



2010 Kentucky Farm Bureau Beef Expo Schedule

BREED SHOWS

ANGUS – Friday, March 5th, 10:00 a.m.
BEEFALO – Friday, March 5th, 2:30 p.m.
CHAROLAIS – Saturday, March 6th, 12:00 noon
CHIANGUS – Friday, March 5th, 1:00 p.m.
LIMOUSIN – Saturday, March 6th, 10:00 a.m.
HEREFORD – Friday, March 5th, 1:00 p.m.
RED ANGUS – Friday, March 5th, 10:00 a.m.
RED POLL – Friday, March 5th, 4:00 p.m.
SALERS – Friday, March 5th, 11:30 a.m.
SHORTHORN – Saturday, March 6th, 10:00 a.m.
SIMMENTAL – Friday, March 5th, 4:00 p.m.
PEN HEIFER SALE – Friday, March 5th, 2:00 p.m.

BREED SALES

Saturday, March 6th, 12:00 noon
Saturday, March 6th, 11:30 a.m.
Saturday, March 6th, 4:00 p.m.
Saturday, March 6th, 3:30 p.m.
Saturday, March 6th, 3:00 p.m.
Saturday, March 6th, 12:30 p.m.
Saturday, March 6th, 10:00 a.m.
Saturday, March 6th, 9:30 a.m.
Saturday, March 6th, 10:00 a.m.
Saturday, March 6th, 1:00 p.m.
Saturday, March 6th, 11:00 a.m.
Saturday, March 6th, 2:00 p.m.

Don't Miss These Other Expo Events!!!!

Junior Heifer, Steer, and Market Heifer Jackpot Shows
Trade Show and Youth Judging Contest

Major Co-Sponsors:

Kentucky Farm Bureau, Kentucky Farm Credit, Merial, Nutrena,
Kentucky Cattleman's Association, Burkmann Feeds, and
The Kentucky Department of Agriculture, Richie Farmer, Commissioner

Additional information: www.kybeefexpo.com