

Registered Quarter Horses • Limousin Cattle



O'BRIEN FARMS

1:30 PM

SUNDAY FEBRUARY 28, 2010

O'BRIEN SALE PAVILION

JANE, MO

A TRUSTED LIMOUSIN SEEDSTOCK SOURCE SINCE 1971

**33RD ANNUAL O'BRIEN FARMS
RANGE CALVED :: RANGE RAISED
CALVING EASE**

LIMOUSIN BULL SALE



WWW.OBRIENFARMS.COM

WELCOME TO THE
33rd ANNUAL O'BRIEN FARMS
LIMOUSIN BULL SALE

SUNDAY - FEBRUARY 28 , 2010 - 1:30 PM.

Jane, MO - O'Brien Farms Sale Pavilion

Sale Day Phone: 417-226-3063

Complimentary Lunch on Sale Day served at 11:00 a.m.

SELLING

80 SERVICE READY LIMOUSIN BULLS!
20 HEAD - 2 YEAR OLD LIMOUSIN BULLS
30 HEAD - LIMOUSIN FALL YEARLINGS
20 HEAD - LIMOUSIN SPRING YEARLINGS
10 HEAD - ANGUS SPRING YEARLINGS
50 - COMMERCIAL FEMALES, PAIRS AND BREDS

BULLS WILL BE WORMED & SEMEN TESTED - WE STAND BEHIND THEM 100%

AUCTIONEER: BRUCE BROOKS 580-276-5137 • 580-695-2036 (MOBILE)

SALE REPRESENTATIVE: KENNY WHITE 918-314-9264

RING MEN:

MARK SMITH • JESSE BOLIN • KYLEY MCKINNA

Don O'Brien
P.O. Box 734
Pineville, MO 64856
Hm 417-436-2568
Office 417-223-4391
Fax 417-223-4393



Call Day or Night:
Jason O'Brien
Mobile 417-437-8942
Mindy O'Brien
Mobile 417-389-2593

North Missouri Division Milon, MO
Dale & Lynn Gray
660-265-3355



Registered Quarter Horses - Limousin Cattle
Blackmouth Cur Dogs

VISIT OUR WEBSITE:
www.obrienfarms.com
Email: pontrail@olemac.net

CATALOG PREPARED BY MINDY O'BRIEN
PRINTED BY FOUR STATE PRINTING, INC.

O'BRIEN FARMS

Hey O'Brien Farms would like to welcome you to the 33rd annual bull sale on February 28, 2010 at 1:30 at the O'Brien Farms Sale Pavilion just south of Jane, Mo. on the west side of hwy 71. We would like to welcome everybody to the ranch anytime to view the bulls and the way we develop them. They are not pampered cattle they have to be the kind that comes little when they are born get right up stand and suck and from that day on they have to grow. At weaning we are critical on them for disposition, testical, weaning weights, birth weights, structure, correctness, and soundness. They have to meet all those guidelines before we offer them to you all the consumers that we have loved to sell bulls to for the last 33 years. A strong tradition that has made many improvements in the herds and made them money. Milk and Muscle are profit.

With all that said let us tell you about how we develop our heifers. From the time they are weaned until the time their first calf hits the ground they have had about 4 weeks worth of feed. They are not developed on high feed rations that are unnatural fro them. I have strived for years to bring you all that natural bull. And to get that natural bull you have to have that natural female. She needs to be the kind that from the day you kick her out on green pastures to the day she has that umptenth calf for you she has to do it here in the ozark grasses which we have a lot of. keep in mind that there is lots of rocks to go along with the grasses. So she has to be sound. We have lots of briars, and stickers on our ranches so udders have to be carried with a lot of structure. The two year olds from May to December The bulls in this offering weren't raised exactly the same way but close. The fall yearlings and spring yearlings got a regular grass pasture and 4 to 5 pounds of feed and lots of room to exercise in. The mature cows calves' do not get any creep feed with very few of the young cows calves' getting creep either.

Dad bought 32 Angus cows from a good friend of ours Roy Near in the fall of 2008. When the cows came off the truck I just complimented them as good cows. The spring of 2009 these cows went to calving I myself caught, weighed, and tagged all the calves at breeding time to another ranch and David our oldest brother A.I.'ed on the fairly quickly too. We took these cows with them, the cow that is, the calves stood and sucked cows and between him and our brother Kelly taking care of them. I didn't see these calves again until weaning. When I sorted them off to load them I was highly impressed with the calves. There were more bulls than heifers. But when we worked these calves it was after dark that day. We were weighing and giving shots, etc...Tate our youngest son is always teasing Papa Don I told him that in the morning when you see Papa Don tell him your Dad cut everyone of them Angus Bulls. It was a fun joke. Dad didn't talk to me for a few days. and to tell you the truth everyone of them made the O'Brien standards you previously read about in this letter.

In the years to come you all will have the opportunity to come to O'Brien Farms and buy a registered Limousin, registered Angus, or to buy a composite bull that we will be offering in the future. We love the limousin breed, the Angus breed, but we also like the composite bulls and females. Bottom line the bulls have to be the kind that will work for you. We would like to be available for you to come to our sale and buy three different kind of bulls if you need to.

The commercial cows in the offering are mixed breeds of cows. there are angus, limousin, black baldies. Most have calves on their sides. They are just good strong functional cows or we would not be offering them. Their ages are mostly 6 years old and younger with a few short and solids.

Don't forget sale starts at 1:30 p.m. sharp Call anytime to view the bulls. If you want to come see the bulls after we move them to the sale barn just call we have light s and are available anytime.

Sincerely
Jason and Don O'Brien and Families

O'BRIEN'S ULBERTO

75%
10851U

RED/SCURRED

4-15-08
LFM1948206

NO. **1**

Pen: Outside

WULFS ROUGH N READY 9202R { WULFS JOEL 6010J { WULFS GUARDIAN 5074G
MISS WULFETTE 6010F

{ WULFS JOY BELLS 9202J { WULFS EVAN 9052E
WULFS ENJOYABLE 5009E

O'BRIEN'S 5016R { WULFS LEPRECHAN 9269L { PLND JEOPARDY 203J
WULFS JOANNA 9269J

{ FOUNDATION COW {



BW	WW	YW	MA	CEM	SC	BTH	WNG	YLG	UREA	UFAT	UMF
.02	38	74	25	4	0	76	528	1165	18.2	.23	1.19

O'BRIEN'S UNBELIEVABLE

50%
10850U

BLACK/SCURRED

3-14-08
NXM1945342

NO. **2**

Pen: Outside

KAJO RESPONDER 120R { JCL LODESTAR 27L { HUNTS HI-LITER 245G
LOGAN'S CHEERLEADER 280G

{ KAJO SHERYL SWOOPS 11H { HC POLLED I 102A
KAJO FANCY 3F

6013 { LFL 701G {

{ IO4110P { WULFS JETHRO IO 2010



BW	WW	YW	MA	CEM	SC	BTH	WNG	YLG	UREA	UFAT	UMF
2.8	59	112	29	6	1	75	650	1245	18.43	.25	1.90

Udders have to be carried with a lot of structure

O'BRIEN'S UTAH

87%
10832U

B&W/DBL PLD

3-21-08
NXM1945333

NO. **3**

Pen: Outside

COLE SHOWDOWN 66S { COLE MAGNUM 15M { ANDERS JAG COLE 8117H

{ COLE 61K { COLE FIRST DOWN 46D
COLE 14Y

O'BRIEN'S 4133P { JCL COUNTRY BOY { DVFC COOKIE MONSTER 108H
JCL MIRA

{ O'BRIENS 354K { LFL 701G
FOUNDATION COW

BW	WW	YW	MA	CEM	SC	BTH	WNG	YLG	UREA	UFAT	UMF
3.4	53	94	18	6	0.3	81	541	1220	16.67	.20	1.47

O'BRIEN'S UNCOILED

75%
I0845U

B&W/HORNED

4-23-08
NXM1945339

NO. **4**

Pen: Outside

GOLD STRIKE { AUTO CLIFF HANGER 194D
OAKM LADY SANDRA 631F

O'BRIENS 413K { MAGBYS FIRST QUARTER
FOUNDATION COW

{ TEXAS RANGER PRIMO YKCC HEART THROB 141W
OAKM LORD OLYMPIAD 05B OAKM LADY STARBURST 919B
WULFS QUARTERBACK 4222B E-LEXIS



BW	WW	YW	MA	CEM	SC	BTH	WNG	YLG	UREA	UFAT	UMF
3.3	45	75	18	2	0.1	76	566	1100	.23	16.43	2.49

O'BRIEN'S UNGUARDED

75%
I01805U

DBL BLACK/HORNED

10-20-08
NXM1948215

NO. **5**

Pen: Outside

BR BLACK MARK { EXLR DAKOTA 353G
DUGG GLITTER

O'BRIENS 5521R { JCL COWBOY JUNCTION
FOUNDATION COW

{ WULF'S COUNT DOWN 9251C CANE RIDGE DAPHNE 011D
WULFS QUARTERBACK 4222B CL GLITTER
EXLR DAKOTA 353G JCL PEPPER

BW	WW	YW	MA	CEM	SC	BTH	WNG	YLG	UREA	UFAT	UMF
2.8	36	65	17	2		85	542				

O'BRIEN'S UNCLOG

50%
I01818U

BLACK/POLLED

8-25-08
NXM1947717

NO. **6**

Pen: Outside

LVLS TOP CRITERIA 8862P { COLE WULF HUNT
LVLS8862M

6514 { LFL 701G
EXLR 759M

{ COLE FIRST DOWN 46D COLE CATALINA 3309C
WZRK BIG KAHUNA 8046K LVLS 3862G
COLE JFIRST DOWN 46D CHR COURTNEY 208C
RIGHT ON TIME EXLR 146K

BW	WW	YW	MA	CEM	SC	BTH	WNG	YLG	UREA	UFAT	UMF
-7	51	91	24	6	.1	76	678				

O'BRIEN'S UNICE

75%
I01820U

DBL BLACK/POLLED

10-22-08
NXM1948216

NO. **7**

Pen: Outside

BR BLACK MARK { EXLR DAKOTA 353G
DUUG GLITTER

O'BRIENS 5518R { JCL COWBOY JUNCTION
FOUNDATION COW

{ WULF'S COUNT DOWN 9251C CAN RIDGE DAPHNE 011D
WULFS QUARTERBACK 4222B CL GLITTER
EXLR DAKOTA 353G JCL PEPPER

BW	WW	YW	MA	CEM	SC	BTH	WNG	YLG	UREA	UFAT	UMF
3.6	37	69	18	2	0.4	88	541				



O'BRIEN'S WOODROW

9012W

4-03-09
AAA16525529

NO. **13**

Pen: Outside

OFF P3 640 { KCF BENNETT 208 P3 { BON VIEW NEW DESIGN 208
KCF MISS RELIANT M109

{ OAK FRONT ERICA ANN 14 { N BAR PRIME RATE
OAK FRONT ERICA ANN 62

PAA ELBA D92 { PAA BLUE SKY DESIGN 1702 { B/R NEW DESIGN 323
STROHS MISS NAVI LASS 904

{ PAA ELBA B12 { PAA 4075 NAV IMPACT 7172
PAA ELBA Y15

BW	WW	YW	MA	CEM	SC	BTH	WNG	YLG	UREA	UFAT	UMF
-0.6	35	68	22			75	635				

O'BRIEN'S WYATT

9011W

4-01-09
AAA16525528

NO. **14**

Pen: Outside

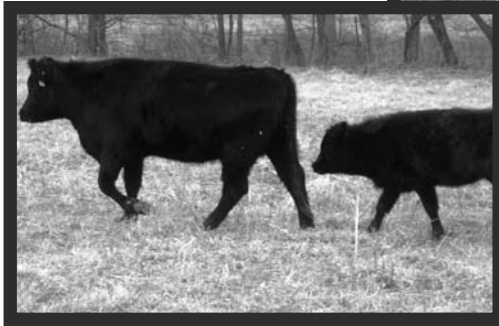
OFF P3 640 { KCF BENNETT 208 P3 { BON VIEW NEW DESIGN 208
KCF MISS RELIANT M109

{ OAK FRONT ERICA ANN 14 { N BAR PRIME RATE
OAK FRONT ERICA ANN 62

PAA MADINA ELBA G45 { BON VIEW NEW DESIGN 878 { B/R NEW DESIGN 036
BON VIEW GAMMER 85

{ PAA MADINA ELBA E18 { PAA NEW DESIGN 036 9086
PAA MADINA ELBA C34

BW	WW	YW	MA	CEM	SC	BTH	WNG	YLG	UREA	UFAT	UMF
0.15	41	75	25			65	575				



TWO YEAR OLDS

O'BRIEN'S UNDERLINE

100%
I0808U

RED/POLLED

3-27-08
NPM 1944844

NO. **15**

Pen: #1

WULFS ROUGH
N READY
9202R

WULFS JOEL
6010J
WULFS JOY
BELLS
9202J

WULFS GUARDIAN 5074G
MISS WULFETTE 6010F

WULFS EVAN 9052E
WULFS ENJOYABLE 5009E

WULFS FLEUR
6100F

WULFS
RAMBLER 8400X
MISS WOLFETTE
0049Y

POLLED PACK LEADER 1182U
T TRI PURECHO 100K

GREAT NORTHERN 9079R
MISS WOLFETTE 8066W



BW	WW	YW	MA	CEM	SC	BTH	WNG	YLG	UREA	UFAT	UMF
3.3	36	72	25	6	0.2	91	679	1245	20.52	.18	1.39

O'BRIEN'S UNCHARTED

100%
I0848U

RED/SCURRED

4-21-08
NPM1945340

NO. **16**

Pen: #1

BR BLACK MARK

EXLR DAKOTA
353G
DUUG GLITTER

WULF'S COUNT DOWN 9251C
CAN RIDGE DAPHNE 011D

WULFS QUARTERBACK 4222B
CL GLITTER

O'BRIENS 4210P

WULFS KLAYTON
7268K
LL MISTY BELL
517

WULFS HARD CORE 1112H
MISS WULFETTE 7268

BACCARAT
LL MISTY LADY



BW	WW	YW	MA	CEM	SC	BTH	WNG	YLG	UREA	UFAT	UMF
2.3	42	76	20	2	0.1	70	500	1100	17.18	.19	2.04

O'BRIEN'S UNARMED

75% RED/HORNED 5-15-08
 10840U NXM 1945335 NO. **17**

Pen: #1

GOLD STRIKE { AUTO CLIFF HANGER 194D
 OAKM LADY SANDRA 631F } TEXAS RANGER PRIMO
 YKCC HEART THROB
 { OAKM LORD OLYMPIAD
 OAKM OADY STARBURST 919B }

MISS EIGHTBALL 544L { TUBB EIGHT-BALL 693E
 FOUNDATION COW } CLLL IMMIENT THUNDER
 MISS JOCK 963U

BW	WW	YW	MA	CEM	SC	BTH	WNG	YLG	UREA	UFAT	UMF
2.3	42	70	19	2	0.1	73	575	1150	17.92	.20	1.55

O'BRIEN'S UMAR

83.5% RED/SCURRED 3-1-08
 10891U NXM 1948203 NO. **18**

Pen: #1

O'BRIENS RESTAURANT 1740R { GOLD STRIKE
 O'BRIENS 2017M } AUTO CLIFF HANGER 194D
 OAKM LADY SANDRA 631F
 { LFL 701G
 FOUNDATION COW }

IO MS STORM 511F { TRAI DESRT STORM
 IO MS JAMISON 316T } POLLED PACK LEADER 1182U
 LBLN BROOKS DOTTIE 32N
 { BURTON JAMISON
 IO MISS BUCKSHOT 036R }

BW	WW	YW	MA	CEM	SC	BTH	WNG	YLG	UREA	UFAT	UMF
3.5	39	66	24	2	0.2	76	575	920	14.73	.12	1.28

O'BRIEN'S UNECESSARY

87% BLACK/DBL PLD 5-20-08
 10814U NXM 1944848 NO. **19**

Pen: #2

CARROUSELS PROPEL { MDRC TUBB LUCKY STRIKE
 DVFC DAWNS EARLY LITE } TUBB GRINDER 749D
 EXLR 120J
 { EXLR RESOLUTION 1293
 DVFC BLACK DAWN 1693 }

O'BRIENS 4140P { WULFS FITZGERALD 3728F
 O'BRIENS 304K } WULFS RAMBLER 8400X
 HUNT RED COTTON 128C
 { LFL 701G
 FOUNDATION COW }

BW	WW	YW	MA	CEM	SC	BTH	WNG	YLG	UREA	UFAT	UMF
0.3	39	70	20	4	0.5	71	598	1120	15.27	.20	1.32

O'BRIEN'S ULMAN

93.5% DBL BLACK/HORNED 4-15-08
 10886U NPM 1948214 NO. **20**

Pen: #2

KING WULF 2003P { WULFS MONEYBAGS 0073M
 WULFS MANAGEMENT 2003M } WULFS FANFARE 4055F
 WULFS 24KARAT GOLD 0073K
 { WULFS POLLED PROGRESS-
 WULFS KONCORDIA 0081K }

O'BRIENS 4106P { WULFS JETHRO 72093
 O'BRIENS 2018M } TUBB GRINDER 749D
 MISS WULFETTE 7209G
 { LFL 701G
 O'BRIENS 316K }

BW	WW	YW	MA	CEM	SC	BTH	WNG	YLG	UREA	UFAT	UMF
0.6	26	64	23	5	0.2	77	512	1000	16.67	0.16	1.17

O'BRIEN'S ULYSSE

87% BLK/POLLED 4-2-08
 10811U NXM 1944846 NO. **21**

Pen: #2

CARROUSELS PROPEL { MDRC TUBB LUCKY STRIKE
 DVFC DAWNS EARLY LITE } TUBB GRINDER 749D
 EXLR 120j
 { EXLR RESOLUTION 1293
 DVFC BLACK DAWN 1693 }

O'BRIENS 4105P { WULFS JETHRO 7209J
 O'BRIENS 2041M } TUBB GRINDER 749D
 MISS WULFETTE 7209G
 { TUBB EIGHTBALL 693E }

BW	WW	YW	MA	CEM	SC	BTH	WNG	YLG	UREA	UFAT	UMF
4.3	48	80	20	4	0.3	97	579	1045	16.87	0.17	1.07

O'BRIEN'S UNBUTTON

50% BLK/SCURRED 5-01-08
 10844U NXM 1945338 NO. **22**

Pen: #2

GOLD STRIKE { AUTO CLIFF HANGER 194D
 OAKM LADY SANDRA 631F } TEXAS RANGER PRIMO
 YKCC HEART THROB
 { OAKM LORD OLYMPIAD
 OAKM LADY STARBURST 919B }

FOUNDATION COW 066H

BW	WW	YW	MA	CEM	SC	BTH	WNG	YLG	UREA	UFAT	UMF
3.6	48	78	21	2	0.1	70	550	1120	17.24	0.27	1.43

O'BRIEN'S UMPIRE

62%
10828U

RED/SCURRED

4-15-08
LFM1945331

NO. **23**

Pen: #3

Wulfs Rough
N Ready
9202R

WULFS JOEL
6010J

WULFS JOY
BELLS
9202J

WULFS GUARDIAN 5074G
MISS WULFETTE 6010F

WULFS EVAN 9052E
WULFS ENJOYABLE 5009E

O'BRIENS 5072R

TWIN CREEKS
DIRECT DRIVE

O'BRIENS 317K

BUBS DIRECT DEPOSIT
TWIN CREEKS ROSEANNA

SYES POLLED ESQUIRE
FOUNDATION COW



BW	WW	YW	MA	CEM	SC	BTH	WNG	YLG	UREA	UFAT	UMF
2.5	38	75	24			77	650	1155	17.61	0.35	2.88

O'BRIEN'S UDELL

100%
10880U

RED/DBL PLD

4-1-08
NPM1948205

NO. **24**

Pen: #3

KING WULF
2003P

WULFS
MONEYBAGS
0073M

WULFS
MANAGEMENT
2003M

WULFS FANFARE 4055F
WULFS 24 KARAT GOLD 0073K

WULFS POLLED PROGRESS
WULFS KONCORDIA 0081K

O'BRIENS 4102P

JCL JACK FROST

IO MISS BUGLE
BOY 130E

EXLR DAKOTA 353G
JCL ETERNITY

OTSS BUGLEBOY 2113B
IO MISS ELK RIVER 061R

BW	WW	YW	MA	CEM	SC	BTH	WNG	YLG	UREA	UFAT	UMF
1.4	34	68	22	2	0.5	74	529	1200	17.32	0.11	1.79



O'BRIEN'S UNBRIDLED

50%
10843U

RED/HORNED

5-15-08
NXM1945337

NO. **25**

Pen: #3

GOLD STRIKE

AUTO CLIFF
HANGER 194D

OAKM LADY
SANDRA 631F

TEXAS RANGER PRIMO
YKCC HEART THROB

OAKM LORD OLYMPIAD
OAKM LADY STARBURST 919 B

FOUNDATION
COW
217J

BW	WW	YW	MA	CEM	SC	BTH	WNG	YLG	UREA	UFAT	UMF
3.6	48	78	21	2	0.1	75	500	976	16.28	0.11	0.96

O'BRIEN'S UGO

87.5%
10859U

RED/SCURRED

4-25-08
NXM1948204

NO. **26**

Pen: #3

KING WULF
2003P

WULFS
MONEYBAGS
0073M

WULFS
MANAGEMENT
2003M

WULFS FANFARE 4055F
WULFS 24 KARAT GOLD 0073K

WULFS POLLED PROGRESS
WULFS KONCORDIA 0081K

O'BRIENS 4171P

HCC BLCK
MUSTANG 432D

O'BRIENS 470L

CHR BLAC MUSTANG
3M MISS STRETCH 182U

WULFS HONDA 5070H
FOUNDATION COW

BW	WW	YW	MA	CEM	SC	BTH	WNG	YLG	UREA	UFAT	UMF
1.9	33	67	20	2	0.1	78	535	1000	0.18	14.4	0.75

O'BRIEN'S UNIKA

84% DBL BLACK/SCURRED 6-10-08
10858U NXM1948213



Pen: #4

KING WULF 2003P { WULFS MONEYBAGS 0073M
WULFS MANAGEMENT 2003M }
WULFS FANFARE 4055F
WULFS 24 KARAT GOLD 0073K
WULFS POLLED PROGRESS
WULFS KONCORDIA 0081K
O'BRIENS 4157P { EXLR LINEMAN 318L
O'BRIENS 519L }
EXLR LIMITED EDITION 765J
EXLR EILEEN 9103
HCC BLK MUSTANG 432D
FOUNDATION COW

BW	WW	YW	MA	CEM	SC	BTH	WNG	YLG	UREA	UFAT	UMF
0.5	26	63	24	2	0.3	74	550	1075	16.57	0.21	1.83

O'BRIEN'S ULF

50% BLK/POLLED 5-1-08
10853U NXM1948208



Pen: #4

KAJO RESPONDER 120R { JCL LODESTAR 27L
KAJO SHERYL SWOOPS 11H }
HUNTS HI-LITER 245G
LOGANS CHEERLEADER 280G
HC POLLED I 102A
KAJO FANCY 3F
IO6053 { WULFS JUMPSHOT
FOUNDATION COW }
WULFS GAGE 5158
WULFS COTTONWOOD 3519C

BW	WW	YW	MA	CEM	SC	BTH	WNG	YLG	UREA	UFAT	UMF
2.8	59	112	21	6	1	80	500	1000	14.37	0.16	2.32

O'BRIEN'S ULGER

87.5% BLK/DBL PLD 6-18-08
10857U NXM1948209



Pen: #4

KING WULF 2003P { WULFS MONEYBAGS 0073M
WULFS MANAGEMENT 2003M }
WULFS FANFARE 4055F
WULFS 24 KARAT GOLD 0073K
WULFS POLLED PROCESS
WULFS KONCORDIA 0081K
O'BRIENS 4161P { LFL 701G
O'BRIENS MUSTANGS 2084M }
COLE FIRST DOWN 46D
CHR COURTNEY 208C
HCC BLK MUSTANG 432D
FOUNDATION COW

BW	WW	YW	MA	CEM	SC	BTH	WNG	YLG	UREA	UFAT	UMF
0.3	27	62	19	3	0.3	71	482	815	12.58	0.20	1.31

O'BRIEN'S ULMAKA

50% B&W/POLLED 6-11-08
10885U NXM1948212



Pen: #4

KING WULF 2003P { WULFS MONEYBAGS 0073M
WULFS MANAGEMENT 2003M }
WULFS FANFARE 4055F
WULFS 24 KARAT GOLD 0073K
WULFS POLLED PROGRESS
WULFS KONCORDIA 0081K
IO6061 { WULFS KLAYTON
Foundation Cow }
WULFS HARD CORE 112H
MISS WULFETTE 7268

BW	WW	YW	MA	CEM	SC	BTH	WNG	YLG	UREA	UFAT	UMF
-0.7	45	85	23	3	-0.2	80	610	1000	11.36	0.14	1.44



FALL YEARLINGS

O'BRIEN'S UNDERWAY

87.5% BLK/SCURRED 6-1-08
 IO 1813U LFM1948206

NO. **31**

Pen: #6

WULFS LEPRECHAN 9269L { PLND JEOPARDY 203J { WULFS GUARDIAN 5074G
 PLND GRETA 144G
 WULFS JOANNA 9269J { WULFS QUARTERBACK 4222B
 WULFS EDINA 9053X
 O'BRIENS 5081R { HCC BLK MUSTANG 432D { CHR BLAC MUSTANG
 3M MISS STRETCH 182U
 O'BRIENS 422L { HAWS 649H
 FOUNDATION COW

BW	WW	YW	MA	CEM	SC	BTH	WNG	YLG	UREA	UFAT	UMF
1.7	42	78	15	4	0.0	75	698				

O'BRIEN'S UNIFY

87% BLK/SCURRED 9-05-08
 IO1814U NXM1947714

NO. **32**

Pen: #6

COLE SHOWDOWN 66S { COLE MAGNUM 15M { ANDERS JAG COLE8117H
 COLE 61K { COLE FIRST DOWN 46D
 COLE 14Y
 O'BRIENS 4122P { LFL 701G { COLE FIRST DOWN 46D
 CHR COURTNEY 208C
 O'BRIENS MUSTANGS 2093M { HCC BLACK MUSTANG
 FOUNDATION COW

BW	WW	YW	MA	CEM	SC	BTH	WNG	YLG	UREA	UFAT	UMF
3.9	53	95	14	4	0.3	76	610				

O'BRIEN'S UPPER DECK

75% DBL BLACK/SCURRED 11-3-08
 IO 807U LFM1948239

NO. **33**

Pen: #6

BR BLACK MARK { EXLR DAKOTA 353G { WULFS COUNT DOWN 9251C
 CANE RIDGE DAPHNE 011D
 DUUG GLITTER { WULFS QUARTERBACK 4222B
 CL GLITTER
 O'BRIENS MUSTANGS 2088M { HCC BLK MUSTANG 432D { CHR BLAC MUSTANG
 3M MISS STRETCH
 FOUNDATION COW

BW	WW	YW	MA	CEM	SC	BTH	WNG	YLG	UREA	UFAT	UMF
3.0	23	64	12	0	0.1	85	507				

COMMERCIAL BULL

BLACK/POLLED FALL 08
 IO1853U

NO. **34**

Pen: #6

LIMOUSIN {
 COMMERCIAL COW {

BW	WW	YW	MA	CEM	SC	BTH	WNG	YLG	UREA	UFAT	UMF
						78	725				

O'BRIEN'S ULYSSEY

87.5% DBL BLACK/SCURRED 9-2-08
 IO 822U NXM1948247

NO. **35**

Pen: #7

BR BLACK MARK { EXLR DAKOTA 353G { WULFS COUNT DOWN 9251C
 CANE RIDGE DAPHNE 011D
 DUUG GLITTER { WULFS QUARTERBACK 4222B
 CL GLITTER
 O'BRIENS 2236N { JCL COUNTRY BOY { DVFC COOKIE MONSTER
 JCL MIRA
 O'BRIENS 357K { LFL 701G
 FOUNDATION COW

BW	WW	YW	MA	CEM	SC	BTH	WNG	YLG	UREA	UFAT	UMF
1.9	34	65	18	3	0.2	77	566				

O'BRIEN'S UNDERSIDE

100% DBL BLK/DBL PLD 8-20-08
 IO 823U NPM1948236 NO. **36**

Pen: #7

BR BLACK MARK { EXLR DAKOTA 353G { WULFS COUNT DOWN 9251C
 { DUUG GLITTER { WULFS QUARTERBACK 4222B
 CL GLITTER

IO MISS BUGLE BOY 130E { OTSS BUGLEBOY 2113B { YKCC TOP LINE 180X
 { IO MISS ELK RIVER 061R { OTSS BLACK VELVET 0101Y
 { ELK RIVER 106H
 { IO MS ROUSSEAU 511K

BW	WW	YW	MA	CEM	SC	BTH	WNG	YLG	UREA	UFAT	UMF
2.3	26	51	16	3	0.3	85	579				

O'BRIEN'S URANUS

100% DBL BLK/POLLED 8-30-08
 IO1802U NPM1948218 NO. **37**

Pen: #7

COLE SHOWDOWN 66S { COLE MAGNUM 15M { ANDERS JAG
 { COLE 61K { COLE 8117 H
 { COLE FIRST DOWN 46D
 { COLE 14Y

PERF MISS CARRIE 744G { CVR SIR CARMAC { LKCC TOMAHAWK TOUCHDOWN
 { MISS GENNY BLACK { CVR QUEEN HANSOM 404W
 { GENERAL LEE LOJW 405
 { PERF 524T

BW	WW	YW	MA	CEM	SC	BTH	WNG	YLG	UREA	UFAT	UMF
2.0	47	77	22	1	-0.1	73	671				

O'BRIEN'S UGLY

87.5% DBL BLK/HORNED 9-5-08
 IO 1803U NXM1948220 NO. **38**

Pen: #7

COLE SHOWDOWN 66S { COLE MAGNUM 15M { ANDERS JAG
 { COLE 61K { COLE 8117 H
 { COLE FIRST DOWN 46D
 { COLE 14Y

O'BRIENS 2033M { LFL 701G { COLE FIRST DOWN 46D
 { O'BRIENS 361K { CHR COURTNEY 208C
 { HCC BLK MUSTANG 432D
 { FOUNDATION COW

BW	WW	YW	MA	CEM	SC	BTH	WNG	YLG	UREA	UFAT	UMF
1.3	38	74	19	4	-0.2	74	572				

O'BRIEN'S UNBROKEN JO

50% B&W/HORNED 10-11-08
 IO1815U NXM1947715 NO. **39**

Pen: #8

LVLS TOP CRITERIA 8862P { COLE WULF HUNT { COLE FIRST DOWN 46D
 { LVLS8862M { COLE CATALINA
 { WZRK BIG KAHUNA
 { LVLS 3862G

FOUNDATION COW 102S {

BW	WW	YW	MA	CEM	SC	BTH	WNG	YLG	UREA	UFAT	UMF
-0.7	51	91	24	6	0.1	52	521				

O'BRIEN'S UNFIT

50% BLACK/POLLED 8-15-08
 IO1809U NXM1947711 NO. **40**

Pen: #8

JCL WULF HUNT 511R { COLE WULF HUNT { COLE FIRST DOWN 46D
 { ZEBO BLACK POLL QUEEN38 ON { TUBB CAMO
 { ZEBO 417
 { ZEBO BLACK POLL QUEEN 155

FOUNDATION COW 6510 {

BW	WW	YW	MA	CEM	SC	BTH	WNG	YLG	UREA	UFAT	UMF
1.6	44	78	19	5	0.1	77	600				

O'BRIEN'S ULLY

100% DBL BLACK/SCURRED 6-2-08
 IO 1824U NPM1948575 NO. **41**

Pen: #8

COLE SHOWDOWN 66S { COLE MAGNUM 15M { ANDERS JAG
 { COLE 61K { COLE8117H
 { COLE FIRST DOWN 46D
 { COLE 14Y

DUUG GLITTER { WULFS QUARTERBACK 4222B { LKCC TOMAHAWKS TOUCHDOWN
 { C L GLITTER { MISS WOLFETTE 42215
 { LITIGATOR
 { TEXAS STAR FAIL

BW	WW	YW	MA	CEM	SC	BTH	WNG	YLG	UREA	UFAT	UMF
2.0	36	71	15	2	-0.2	75	508				

O'BRIEN'S UMMERT

75% DBL BLK/DBL PLD 12-21-08
IO 1854U LFM1948225



Pen: #8

BR BLACK MARK { EXLR DAKOTA 353G } WULFS COUNT DOWN 9251C
CANE RIDGE DAPHNE 011D
{ DUUG GLITTER } WULFS QUARTERBACK 4222B
C L GLITTER

O'BRIENS 2012M { WULFS JOHNNY APPLESEED } WULFS GAGE 5158G
WULFS LADY 2048B
{ FOUNDATION COW }

BW	WW	YW	MA	CEM	SC	BTH	WNG	YLG	UREA	UFAT	UMF
0.9	31	60	16	-1	0.3	71	717				

O'BRIEN'S UPPER LINE

87.5% DBL BLK/SCURRED 9-1-08
IO 1850U NXM1948249



Pen: #9

COLE SHOWDOWN 66S { COLE MAGNUM 15M } ANDERS JAG
COLE8117H
{ COLE 61K } COLE FIRST DOWN 46D
COLE 14Y

O'BRIENS 4124P { LFL 701G } COLE FIRST DOWN 46D
CHR COURTNEY 208C
{ O'BRIENS 2053M } MAGBYS FIRST QUARTER
FOUNDATION COW

BW	WW	YW	MA	CEM	SC	BTH	WNG	YLG	UREA	UFAT	UMF
2.5	54	97	16	5	0.3	76	633				

O'BRIEN'S UNDER RADAR

75% BLK/SCURRED 10-1-08
IO1804U LFM1948237



Pen: #9

JCL JACK FROST { EXLR DAKOTA 353G } WULFS COUNT DOWN 9251C
CANE RIDGE DAPHNE 011D
{ JCL ETERNITY } JCL BLACK OUT
ROKR DIAMONDS ARE FOREVER

O'BRIENS MUSTANGS 2089M { HCC BLK MUSTANG 432D } CHR BLAC MUSTANG
35 MISS STRETCH 182U
{ FOUNDATION COW }

BW	WW	YW	MA	CEM	SC	BTH	WNG	YLG	UREA	UFAT	UMF
1.8	49	85	15	-1	1.3	68	550				

O'BRIEN'S USHA

50% BLK/SCURRED 10-5-08
IO1856U NXM1948233



Pen: #9

WULFS ROUGH N READY 9202R { WULFS JOEL 60103 } WULFS GUARDIAN 5074G
MISS WULFETTE 6010F
{ WULFS JOY BELLS 9202J } WULFS EVAN 9052E
WULFS ENJOYABLE 5009E

3018 { LIMOUSIN }
{ FOUNDATION COW }

BW	WW	YW	MA	CEM	SC	BTH	WNG	YLG	UREA	UFAT	UMF
4.3	49	92	33	4	0.6	79	750				

COMMERCIAL BULL #2

BLACK/SCURRED FALL '08
IO1858U



Pen: #9

LIMOUSIN { }

COMMERCIAL COW { }

BW	WW	YW	MA	CEM	SC	BTH	WNG	YLG	UREA	UFAT	UMF
						77	680				

O'BRIEN'S UPRIGHT

75% BLK/SCURRED 12-2-08
IO1827U NXM1947721



Pen: #10

WULFS LEPRECHAN 9269L { PLND JEOPARDY 203J } WULF GUARDIAN 5074G
PLND GRETTA 144G
{ WULFS JOANNA 9269J } WULFS QUARTERBACK 422B
WULF EDINA 9053X

O'BRIENS 5002R { WULFS JETHRO 7209J } TUBB GRINDER 749D
MISS WULFETTE7209G
{ FOUNDATION COW }

BW	WW	YW	MA	CEM	SC	BTH	WNG	YLG	UREA	UFAT	UMF
-0.8	40	75	19	6	0.1	71	580				

O'BRIEN'S URBANA

75% DBL BLK/DBL POLLED 11-20-08
101851U NXM1948248 NO. 48

Pen: #10

WULFS
KLAYTON
7268K

WULFS
HARD-CORE
1112H
MISS WULFETTE
7268G

WULFS FRANCHISE 2443 F
MISS WOLFETTE 1111A

WULFS EXPLOSION 0184E
MISS WOLFETTE 41455

O'BRIENS 2029M

WULFS JETHRO
7209J
FOUNDATION
COW

TUBB GRINDER 749D
MISS WULFETTE 7209G

BW	WW	YW	MA	CEM	SC	BTH	WNG	YLG	UREA	UFAT	UMF
2.2	50	77	20	4	-0.3	85	753				

O'BRIEN'S URNY

87.5% BLK/POLLED 12-24-08
101852U NXM1948577 NO. 49

Pen: #10

JCL JACK
FROST

EXLR DAKOTA
353G
JCL ETERNITY

WULFS COUNT DOWN 9251C
CANE RIDGE DAPHNE 011D

JCL BLACK OUT
ROKR DIAMONDS ARE FOREVER

O'BRIENS 2019M

LFL 701G
O'BRIENS 365K

COLE FIRST DOWN 46D
CHR COURTNEY 208C

HCC BLK MUSTANG 432D
FOUNDATION COW

BW	WW	YW	MA	CEM	SC	BTH	WNG	YLG	UREA	UFAT	UMF
4.2	52	90	19	1	0.4	74	699				

O'BRIEN'S USHER

75% RED/DBL PLD 11-15-08
101859U NXM 194 8578 NO. 50

Pen: #10

JCL JACK
FROST

EXLR DAKOTA
353G
JCL ETERNITY

WULFS COUNT DOWN 9251C
CANE RIDGE DAPHNE 011D

JCL BLACK OUT
ROKR DIAMONDS ARE FOREVER

O'BRIENS 2072M

WULFS HONDA
5070H
FOUNDATION
COW

WULFS RAMBLER 8400X
MISS WULFETTE 5070E

BW	WW	YW	MA	CEM	SC	BTH	WNG	YLG	UREA	UFAT	UMF
3.1	45	79	16	1	0.3	76	689				

O'BRIEN'S UNREALISTIC

87.5% RED/DBL PLD 11-3-08
101816U NXM1948240 NO. 51

Pen: #5

BR BLACK MARK

EXLR DAKOTA
353G
DUUG GLITTER

WULFS COUNT DOWN 9251C
CANE RIDGE DAPHNE 011D

WULFS QUARTERBACK 4222B
C L GLITTER

EXLR QUEEN
759M

EXLR RIGHT ON
TIME 1063
EXLR QUEEN
146K

WULFS COUNT DOWN 9251C
EXLR 516G

EXLR POLLED BENCHMARK 709G
EXLR 511G

BW	WW	YW	MA	CEM	SC	BTH	WNG	YLG	UREA	UFAT	UMF
2.4	35	66	24	1	0.5	83	608				



O'BRIEN'S UNDOCUMENTED

75%
101806U

RED/POLLED

9-1-08
NXM1947710

NO. **52**

Pen: #5

JCL JACK FROST { EXLR DAKOTA 353G { WULFS COUNT DOWN 9251C
CANE RIDGE DAPHNE 011D
JCL ETERNITY { JCL BLACK OUT
ROKR DIAMONDS ARE FOREVER

O'BRIENS 304K { LFL 701G { COLE FIRST DOW 46D
HCR COURTNEY 208C
FOUNDATION COW {

BW	WW	YW	MA	CEM	SC	BTH	WNG	YLG	UREA	UFAT	UMF
2.4	48	84	19	1	0.5	78	540				

O'BRIEN'S UNITY

75%
101821U

RED/POLLED

9-20-08
NXM1948217

NO. **53**

Pen: #5

BR BLACK MARK { EXLR DAKOTA 353G { WULFS COUNT DOWN 9251C
CANE RIDGE DAPHNE 011D
DUUG GLITTER { WULFS QUARTERBACK 4222B
C L GLITTER

O'BRIENS 5523R { JCL COWBOY JUNCTION { EXLR DAKOTA 353G
JCL PEPPER
FOUNDATION COW {

BW	WW	YW	MA	CEM	SC	BTH	WNG	YLG	UREA	UFAT	UMF
1.6	38	69	18	2	0.4	73	518				

O'BRIEN'S UNION JACK

87%
101811U

RED/POLLED

7-23-08
NXM1947712

NO. **54**

Pen: #5

WULFS LEPRECHAN 9269L { PLND JEOPARDY 203J { WULFS GUARDIAN 5074G
PLND GRETTA 144G
WULFS JOANNA 9269J { WULFS QUARTERBACK 422B
WULF EDINA 9053X

O'BRIENS 5093R { WULFS MONITOR 8015M { WULFS KLINT 5874K
MISS WULFETTE 8015H
O'BRIENS 2004M { WULFS JUMP SHOT
FOUNDATION COW

BW	WW	YW	MA	CEM	SC	BTH	WNG	YLG	UREA	UFAT	UMF
2.2	49	88	19	4	0.3	76	658				

O'BRIEN'S UNDERTAKING

87%
101826U

RED/POLLED

12-1-08
NXM1947720

NO. **55**

Pen: #5

WULFS LEPRECHAN 9269L { PLND JEOPARDY 203J { WULFS GUARDIAN 5074G
PLND GRETTA 144 G
WULFS JOANNA 9269J { WULFS QUARTERBACK 422B
WULF EDINA 9053X

O'BRIENS 5067R { WULFS JETHRO 7209J { TUBB GRINDER 749D
MISS WULFETTE 7209G
O'BRIENS 322K { TUBB EIGHTBALL 693E
FOUNDATION COW

BW	WW	YW	MA	CEM	SC	BTH	WNG	YLG	UREA	UFAT	UMF
-0.5	36	71	16	7	0.1	77	600				

O'BRIEN'S URSULA

50%
101855U

RED/SCURRED

8-1-08
NXM1948232

NO. **56**

Pen: #5

WULFS ROUGH N READY 9202R { WULFS JOEL 6010J { WULFS GUARDIAN 5074G
MISS WULFETTE 6010F
WULFS JOY BELLS 9202J { WULFS EVAN 9052E
WULFS ENJOYABLE 5009E

606r { GOLD STRIKE { TEXAS RANGER PRIMO
YKCC HEART THROB
517E { LIMOUSIN
FOUNDATION COW

BW	WW	YW	MA	CEM	SC	BTH	WNG	YLG	UREA	UFAT	UMF
4.3	49	92	33	4	0.6	72	730				



SPRING LIMOUSIN YEARLINGS

O'BRIEN'S WINSLOW

87.5%
10929W

RED/HORNED

3-15-09
NXM1948272

NO. **57**

Pen: Outside #2

WULFS ROUGH N READY 9202R { WULFS JOE 6010J { WULFS GUARDIAN 5074G
MISS WULFETTE 6010F
WULFS JOY BELLS 9202J { WULFS EVAN 9052E
WULFS ENJOYABLE 5009E
OBRIENS 2015M { WULFS KELLER 7516K { AUTO HACKETT 702H
WULFS GLAD TIDINGS 7516G
OBRIENS 350K { LFL 701G
FOUNDATION COW

BW	WW	YW	MA	CEM	SC	BTH	WNG	YLG	UREA	UFAT	UMF
2.8	38	82	24	3	0.4	73	674				

O'BRIEN'S WYNTER

87.5%
10917W

RED/POLLED

2-21-09
NXM1948255

NO. **58**

Pen: Outside #2

OBRIENS RESTAURANT 1740R { GOLD STRIKE { AUTO CLIFF HANGER 194D
OAKM LADY SANDRA 631F
OBRIENS 2017M { LFL 701G
FOUNDATION COW
LL BLACK BELL 721 { IBRR BLACK SHADOW { FSHK BLACK OLY 357
WLCC 07X
LL LADY BELL { TEXS RANGER PRIMO
LLMISTY LADY

BW	WW	YW	MA	CEM	SC	BTH	WNG	YLG	UREA	UFAT	UMF
2.5	41	69	21	1	0.3	73	705				

O'BRIEN'S WILD CARD

87.5%
10932W

RED/DBL PLD

1-1-09
NXM1948274

NO. **59**

Pen: Outside #2

OBRIENS TEXAS RANGER { JCL JACK FROST { EXLR DAKOTA 353G
JC ETERNITY
IO MISS DIAMOND 142E { DIAMOND TIME 953Y
MS IO POLL CAT 830W
EXLR QUEEN 783M { EXLR RIGHT ON TIME 106J { WULFS COUNT DOWN 9251C
EXLR 516G
EXLR QUEEN 146K { EXLR POLLED BENCHMARK 709G
EXLR 511G

BW	WW	YW	MA	CEM	SC	BTH	WNG	YLG	UREA	UFAT	UMF
2.2	31	69	25	1		74	671				

O'BRIEN'S WAVERLY

87.5%
10926W

RED/POLLED

3-15-09
NXM1948260

NO. **60**

Pen: Outside #2

OBRIENS RESTAURANT 1740R { GOLD STRIKE { AUTO CLIFF HANGER 194D
OAKM LADY SANDRA 631F
OBRIENS 2017M { LFL 701G
FOUNDATION COW
OBRIENS 5085R { HCC BLK MUSTANG 432D { CHR BLAC MUSTANG
3M MISS STRETCH 182U
OBRIENS 576L { LFL 701G
LA BLACK SATIN

BW	WW	YW	MA	CEM	SC	BTH	WNG	YLG	UREA	UFAT	UMF
4.6	32	79	18	2	0.1	81	598				

O'BRIEN'S WAYNE

87.5%
10909W

BLK/POLLED

4-20-09
NXM1948264

NO. **61**

Pen:#3

WULFS ROUGH N READY 9202R { WULFS JOEL 6010J { WULFS GUARDIAN 5074G
MISS WULFETTE 6010F
WULFS JOY BELLS 9202J { WULFS EVAN 9052E
WULFS ENJOYABLE 5009E
OBRIENS 4108P { LFL 701G { COLE FIRST DOWN 46D
CHR COURTNEY 208C
OBRIENS 2014M { WULFS FITZGERALD 3728F
FOUNDATION COW

BW	WW	YW	MA	CEM	SC	BTH	WNG	YLG	UREA	UFAT	UMF
3.4	49	82	29	5	0.5	75	801				

O'BRIEN'S WILSON

100%
10913W

BLK/DBL PLD

4-10-09
NPM1948268



Pen: Outside #3

COLE SHOWDOWN 66S { COLE MAGNUM 15M { ANDERS JAG COLE8117H
COLE 61K { COLE FIRST DOWN 46D COLE 14Y

O'BRIENS 2104M { LFL 701G { COLE FIRST DOWN 46D CHR COURTNEY 208C
WULFS FLEUR 6100F { WULFS RAMBLER 8400X MISS WOLFETTE 0049Y

BW	WW	YW	MA	CEM	SC	BTH	WNG	YLG	UREA	UFAT	UMF
1.9	49	92	17	6	0.3	69	766				

O'BRIEN'S WESTERN

87.5%
10920W

DBL BLK/SCURRED

4-11-09
NXM1948258



Pen: Outside #3

WULFS KLAYTON { WULFS HARD-CORE 1112H { WULFS FRANCHISE 2443 f MISS WOLFETE 1111A
MISS WULFETTE 7268G { WULFS EXPLOSION 0184E MISS WOLFETTE 41455

O'BRIENS 5062R { WULFS JETHRO 7209J { TUBB GRINDER 749D MISS WOLFETTE 7209G
O'BRIENS 347K { LFL 701G FOUNDATION COW

BW	WW	YW	MA	CEM	SC	BTH	WNG	YLG	UREA	UFAT	UMF
2.0	41	75	19	5	-0.2	78	766				

O'BRIEN'S WAYNE

87.5%
10909W

BLK/POLLED

4-20-09
NXM1948264



Pen: Outside #3

WULFS ROUGH N READY 9202R { WULFS JOEL 6010J { WULFS GUARDIAN 5074G MISS WOLFETTE 6010F
WULFS JOY BELLS 9202J { WULFS EVAN 9052E WULFS ENJOYABLE 5009E

O'BRIENS 4108P { LFL 701G { COLE FIRST DOWN 46D CHR COURTNEY 208C
O'BRIENS 2014M { WULFS FITZGERALD 3728 FOUNDATON COW

BW	WW	YW	MA	CEM	SC	BTH	WNG	YLG	UREA	UFAT	UMF
3.4	49	82	29	5	0.5	75	801				

O'BRIEN'S WINN

87.5%
10931W

RED/HORNED

4-20-09
NXM1948273



Pen: #11

WULFS ROUGH N READY 9202R { WULFS JOEL 6010J { WULFS GUARDIAN 5074G MISS WOLFETTE 6010F
WULFS JOY BELLS 9202J { WULFS EVAN 9052E WULFS ENJOYABLE 5009E

O'BRIENS 5047R { JCL COUNTRY BOY { DVFC COOKIE MONSTER 108H JCL MIRA
O'BRIENS 310K { MAGBYS FIRST QUARTER FOUNDATION COW

BW	WW	YW	MA	CEM	SC	BTH	WNG	YLG	UREA	UFAT	UMF
3.0	44	77	26	5	0.3	77	771				

O'BRIEN'S WILLOW

50%
10928W

RWF/HORNED

3-15-09
NXM1948271



Pen: #11

O'BRIENS TEXAS RANGER { JCL JACK FROST { EXLR DAKOTA 353G JCL ETERNITY
IO MISS DIAMOND 142E { DIAMOND TIME 953Y MS IO POLL CAT 830W

2211 { LIMOUSIN {
FOUNDATION COW {

BW	WW	YW	MA	CEM	SC	BTH	WNG	YLG	UREA	UFAT	UMF
3	42	74	19	2	0.4	71	635				

O'BRIEN'S WADE

87.5%
10904W

RED/SCURRED

4-28-09
NXM1948261



Pen: #11

BR BLACK MARK { EXLR DAKOTA 353G { WULFS COUNT DOWN 9251C CANE RIDGE DAPHNE 011D
DUUG GLITTER { WULFS QUARTERBACK 4222B C L GLITTER

O'BRIENS 5088R { WULFS MONITOR 8015M { WULFS KLINT 5874K MISS WOLFETTE 8015H
O'BRIENS 2001M { WULFS JUMP SHOT 35193 FOUNDATION COW

BW	WW	YW	MA	CEM	SC	BTH	WNG	YLG	UREA	UFAT	UMF
2.6	37	76	18	1	0.4	75	699				

O'BRIEN'S WILLY WONKA

87.5% RED/SCURRED 4-15-09
10903W NXM1948827 NO. **68**

Pen: #11

BR BLACK MARK { EXLR DAKOTA 353G } WULFS COUNT DOWN 9251C
CANE RIDGE DAPHNE 011D
{ DUUG GLITTER } WULFS QUARTERBACK 4222B
C L GLITTER

O'BRIENS 5083R { HCC BLK MUSTANG 432D } CHR BLAC MUSTANG
3M MISS STRETCH 182U
{ O'BRIENS 466L } WULFS HONDA 5070H
FOUNDATION COW

BW	WW	YW	MA	CEM	SC	BTH	WNG	YLG	UREA	UFAT	UMF
2.8	35	68	14	1	0.1	77	602				

O'BRIEN'S WESTON

84% BLK/SCURRED 4-21-09
10911W NXM1948265 NO. **69**

Pen: #12

WULFS ROUGH N READY 9202R { WULFS JOEL 6010J } WULFS GUARDIAN 5074G
MISS WULFETTE 6010F
{ WULFS JOY BELLS 9202J } WULFS EVAN 9052E
WULFS ENJOYABLE 5009E

O'BRIENS 4154P { EXLR LINEMAN 318L } EXLR LIMITED EDITION 7653
EXLR EILEEN 9103
{ O'BRIENS 518L } HCC BLK MUSTANG 432D
FOUNDATION COW

BW	WW	YW	MA	CEM	SC	BTH	WNG	YLG	UREA	UFAT	UMF
2.7	47	78	26	2	0.4	74	821				

O'BRIEN'S WICKED

75% B&W/POLLED 4-15-09
10924W NXM1948828 NO. **70**

Pen: #12

WULFS ROUGH N READY 9202R { WULFS JOEL 6010J } WULFS GUARDIAN 5074G
MISS WULFETTE 6010F
{ WULFS JOY BELLS 9202J } WULFS EVAN 9052E
WULFS ENJOYABLE 5009E

O'BRIENS MUSTANG 2093M { HCC BLK MUSTANG } CHR BLAC MUSTANG
3M MISS STRETCH 182U
{ FOUNDATION COW }

BW	WW	YW	MA	CEM	SC	BTH	WNG	YLG	UREA	UFAT	UMF
4.1	44	80	23	2	0.2	87	650				

O'BRIEN'S WEENUS

100% DBL BLK/HORNED 4-20-09
10930W NPM1948864 NO. **71**

Pen: #12

BR BLACK MARK { EXLR DAKOTA 353G } WULFS COUNT DOWN 9251C
CANE RIDGE DAPHNE 011D
{ DUUG GLITTER } WULFS QUARTERBACK 4222B
C L GLITTER

O'BRIENS 5511R { HCC BLK MUSTANG 432D } CHR BLAC MUSTANG
3M MISS STRETCH 182U
{ O'BRIENS 2103 } LFL 701G
IO MISS COLDCASH 198E

BW	WW	YW	MA	CEM	SC	BTH	WNG	YLG	UREA	UFAT	UMF
3.9	38	72	14	1	0.1	82	627				

O'BRIEN'S WARREN

100% DBL BLK/DBL PLD 4-30-09
10907W NPM1948263 NO. **72**

Pen: #12

BR BLACK MARK { EXLR DAKOTA 353G } WULFS COUNT DOWN 9251C
CANE RIDGE DAPHNE 011D
{ DUUG GLITTER } WULFS QUARTERBACK 4222B
C L GLITTER

LA BLACK ROSE { IBRR BLACK SHADOW } FSHK BLACK OLY 357
WLCC 07X
{ DBRO PRIMROSE 075W } TEXAS RANGER PRIMO
TINSLEY BLACK GIRL 075N

BW	WW	YW	MA	CEM	SC	BTH	WNG	YLG	UREA	UFAT	UMF
3.3	40	66	17	0	0.4	81	788				



SPRING ANGUS YEARLINGS

O'BRIEN'S WALLY

9015W 3-14-09
AAA16525532 NO.
73

Pen: Outside

OFF P3 640 { KCF BENNETT 208 P3 { BON VIEW NEW DESIGN 208
KCF MISS RELIANT M109
OAK FRONT ERICA ANN 14 { N BAR PRIME RATE
OAK FRONT ERICA ANN 62

PAA BLACKBIRD G92 { PAA EXT C15 { N BAR EMULATION EXT
PAA EVIANNA Y16
PAA 6042 BLACKBIRD 1134 { PAA 5204 TRAVELER 6042
PAA MERIT BLACKBIRD 9002

BW	WW	YW	MA	CEM	SC	BTH	WNG	YLG	UREA	UFAT	UMF
-0.4	40	75	20			62	665				

O'BRIEN'S WESLEY

9016W 3-23-09
AAA16525533 NO.
74

Pen: Outside

OFF P3 640 { KCF BENNETT 208 P3 { BON VIEW NEW DESIGN 208
KCF MISS RELIANT M109
OAK FRONT ERICA ANN 14 { N BAR PRIME RATE
OAK FRONT ERICA ANN 62

OAK FRONT ANTELOPE 665 { SCHURRTOP WS 9447 3067 { BLEVINS SCHURRTOP SOLUTION
SCHURRTOP 2928 9512
OAK FRONT ANTELOPE 362 { STONE GATE QUARTERBACK
OAK FRONT ANTELOPE C163

BW	WW	YW	MA	CEM	SC	BTH	WNG	YLG	UREA	UFAT	UMF
-1	38	70	20			64	655				

O'BRIEN'S WILBUR

9017W 4-8-09
AAA16525534 NO.
75

Pen: Outside

OFF P3 640 { KCF BENNETT 208 P3 { BON VIEW NEW DESIGN 208
KCF MISS RELIANT M109
OAK FRONT ERICA ANN 14 { N BAR PRIME RATE
OAK FRONT ERICA ANN 62

OAK FRONT BLACKMERE 261 { GARDENS EXT 7137 S1 { N BAR EMULATION EXT
GREEN GARDEN BONNIE 1134 S1
OAK FRONT BLACKMERE C265 { N BAR PRIME RATE
OAK FRONT 592 BLACKMERE

BW	WW	YW	MA	CEM	SC	BTH	WNG	YLG	UREA	UFAT	UMF
.55	38	68	23			75	660				

O'BRIEN'S WALKER

9001W 3-24-09
AAA16525516 NO.
76

Pen: Outside

OFF P3 640 { KCF BENNETT 208 P3 { BON VIEW NEW DESIGN 208
KCF MISS RELIANT M109
OAK FRONT ERICA ANN 14 { N BAR PRIME RATE
OAK FRONT ERICA ANN 62

OAK FRON LUCY 955 { DIAMOND AMBUSH 866K { ROCKIN D AMBUSH 1531
DIAMOND JANNET H909
OAK FRONT 192 LUCY 26 { RITO 2H11 OF 9E23 RITO 9J9
OAK FRON 649 LUCY 192

BW	WW	YW	MA	CEM	SC	BTH	WNG	YLG	UREA	UFAT	UMF
0.05	38	65	22			71	600				

O'BRIEN'S WALTER

9003W 4-1-09
AAA16525518 NO.
77

Pen: Outside

OFF P3 640 { KCF BENNETT 208 P3 { BON VIEW NEW DESIGN 208
KCF MISS RELIANT M109
OAK FRONT ERICA ANN 14 { N BAR PRIME RATE
OAK FRONT ERICA ANN 62

PAA MADINA ELBA E18 { PAA NEW DESIGN 036 9086 { B/R NEW DESIGN 036
PAA BHAWK 1093 ANN 4153
PAA MADINA ELBA C34 { N BAR EMULATION EXT
HIGH POINT MADINA ELBA W04

BW	WW	YW	MA	CEM	SC	BTH	WNG	YLG	UREA	UFAT	UMF
0.2	42	73	23			97	650				

O'BRIEN'S WALLACE

9002W

3-17-09
AAA16525517



Pen: Outside

OFF P3 640 { KCF BENNETT 208 P3 { BON VIEW NEW DESIGN 208
KCF MISS RELIANT M109

{ OAK FRONT ERICA ANN 14 { N BAR PRIME RATE
OAK FRONT ERICA ANN 62

PAA QUEEN D96 { IRONWOOD 9399 6370 1384 { IRONWOOD NEW LEVEL
WARDENS PRIDE B2 6370 8230

{ PAA 5003 QUEEN 1157 { PAA NAVIGATOR 5003
PAA HPIN QUEEN 6537

BW	WW	YW	MA	CEM	SC	BTH	WNG	YLG	UREA	UFAT	UMF
0.45	36	70	22			55	610				

O'BRIEN'S WAYLON

9005W

3-28-09
AAA16525520



Pen: Outside

OFF P3 640 { KCF BENNETT 208 P3 { BON VIEW NEW DESIGN 208
KCF MISS RELIANT M109

{ OAK FRONT ERICA ANN 14 { N BAR PRIME RATE
OAK FRONT ERICA ANN 62

PAA BLACKBIRD D17 { 4 POINT 8 OF IRONWOOD { IRONWOOD NEW LEVEL
WARDENS BARBAR 209 6370 8248

{ PAA VOYAGER BLACKBIRD 9100 { PAA VOYAGER
PAA BLACKBIRD 5163

BW	WW	YW	MA	CEM	SC	BTH	WNG	YLG	UREA	UFAT	UMF
0.3	40	73	20			75	625				

*Milk & Muscle
are Profit!*

O'BRIEN'S WENDELL

9007W

3-16-09
AAA16525523



Pen: Outside

OFF P3 640 { KCF BENNETT 208 P3 { BON VIEW NEW DESIGN 208
KCF MISS RELIANT M109

{ OAK FRONT ERICA ANN 14 { N BAR PRIME RATE
OAK FRONT ERICA ANN 62

OAK FRONT ENCHANTRESS 335 { DIAMOND AMBUSH 866K { ROCKIN D AMBUSH 1531
DIAMOND JANNET H909

{ OAK FRONT ENCHANTRESS B76 { N BAR JUSTRITE 4324A
OAK FRONT 750 ENCHANTRESS 76

BW	WW	YW	MA	CEM	SC	BTH	WNG	YLG	UREA	UFAT	UMF
-4	39	69	22			55	625				

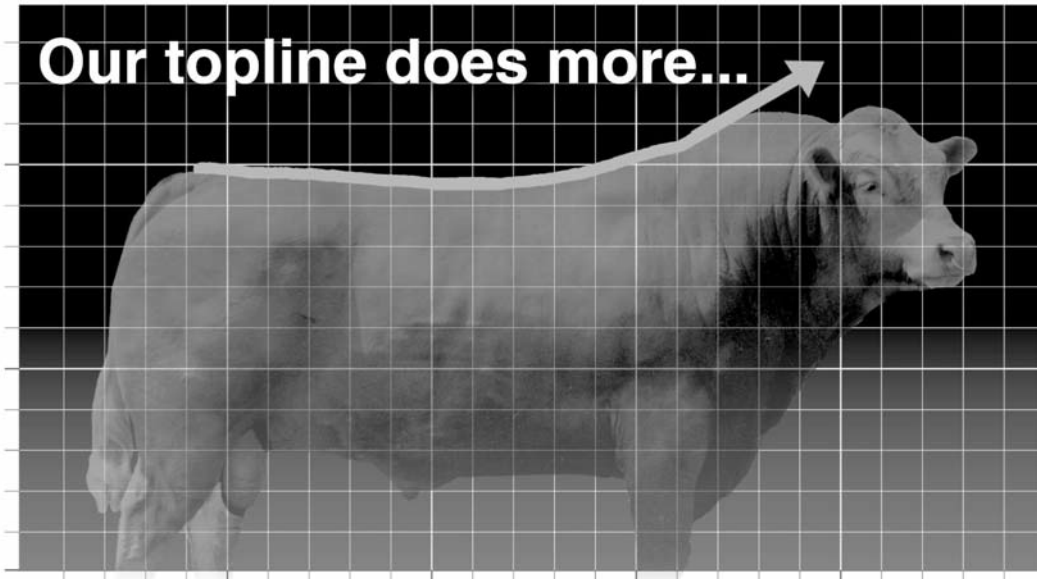


NOTES

**SELLING 50 COMMERCIAL FEMALES
WILL HAVE SUPPLEMENT SHEET AVAILABLE SALE DAY**



Our topline does more...



...for your bottom line.

There's a lot more that comes with our famous topline than meets the eye. With the latest advances in Limousin genetics, you can make sure it all adds up for you.

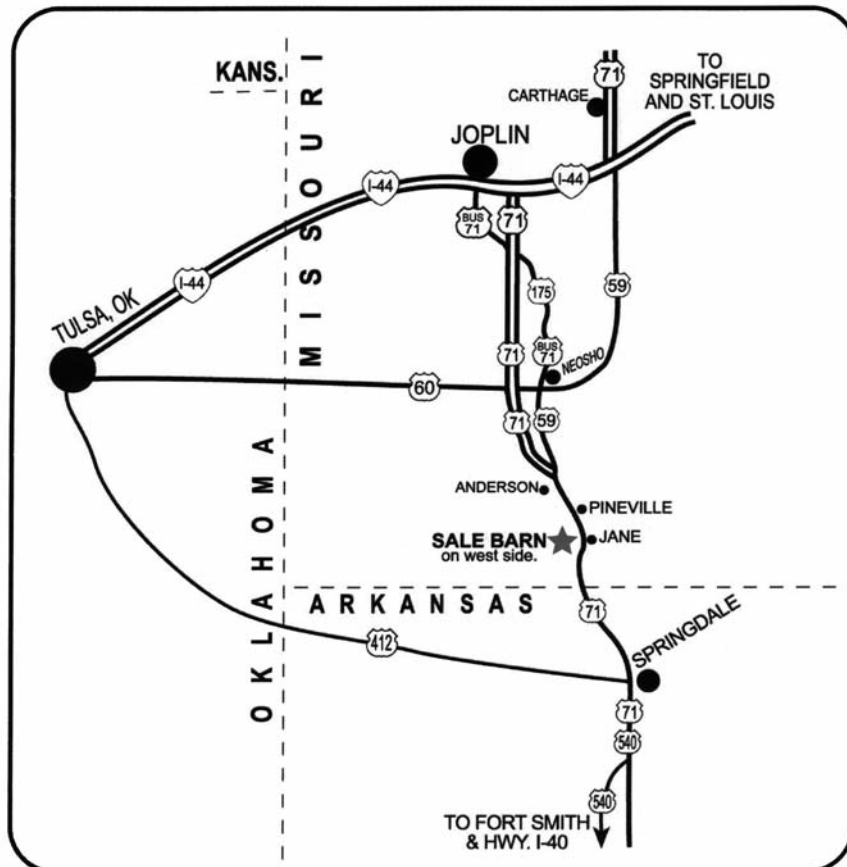
- + Easy calving and handling
- + Naturally efficient growth and carcass yield
- + Enhanced quality and yield grades
- + Increased bull and female longevity
- + More market options through natural brands and mainstream grids

Do the math for your operation—then beef up your bottom line with Limousin.

Today's Limousin. Your best cross for profit.



Learn more and locate your area Limousin breeders at www.TodaysLimousin.com or call 303-220-1693.





Registered Quarter Horses • Limousin Cattle

O'BRIEN

FARMS

P.O. Box 734 • Pineville, MO 64856