

Fall Preview
LIMOUSIN SALE



OCTOBER

1 PM **9** 2010

BURBANK, OHIO

CIRCLE L LIMOUSIN SALE FACILITY

Fall Preview LIMOUSIN SALE

OCTOBER 9 1 PM
2010
CIRCLE L LIMOUSIN
SALE FACILITY
BURBANK
OHIO

Schedule of Events

Friday, October 8, 2010
Cattle Available for viewing

Saturday, October 9, 2010
Cattle Available for viewing
11:00 am - Lunch served
12:00 noon - *Fall Preview Limousin Sale*

Sale Day Phone

330-624-2655 • 817-821-6263

Sale Location



Sale Accommodations



HOLIDAY INN EXPRESS, Wadsworth (20 min from Farm)
231 Park Center Drive, Wadsworth, OH 4481 • 330-334-7666
www.hiexpress/wadsworthoh

RAMADA LIMITED, Wadsworth (20 min from Farm)
5 Park Center Drive, Wadsworth, OH 4481 • 330-336-7692

Announcements

Announcements at the sale by the owners, auctioneer or sale management will take precedence over statements in the catalog.

EPD Information

Please note the EPD's may change from the time the catalog is printed until the registration papers are transferred.

Terms & Conditions

Cattle sell under the standard sale terms and conditions of the North American Limousin Foundation.

Auctioneer

Mark Murphy

Catalog

Written & edited by Keith Kissee - KK Seedstock Consultants
Designed by Kim Matthews - Prime Cut Publishing
Download the catalog at: www.kkseedstock.com

Sale Management

KEITH KISSEE
**KK SEEDSTOCK CONSULTANTS
SPECIALIZED SALES**
2300 Monument Ave., Richmond, VA 23220
Keith Kissee • Cell: 817-821-6263
Ph: 804-353-2220 • Fax: 804-353-2221
email: kkseedstock@comcast.net

Consignors...

CALEB MILLER

10550 Amish Ridge Rd.
Somerset, OH 437831
614-218-2043

FAWLEY FARMS

3540 Anderson Rd.
Lynchburg, OH 45142
937.364.2077

MAPLE LANE FARMS

Ed & Rita Nicol
2207 Clark Rd.
Enon Valley, PA 16120
724-336-6618

ROLLING ACRES FARMS

Kim, Becky & Stephen Getz
HC 72, Box 7033
Scherr, WV 26726
304-749-8043
ralimousin@frontiernet.net

CIRCLE L LIMOUSIN & LAND CO.

Robert Leatherman, Owner
Larry Landis, Manager
4309 W. Sterling Rd.
Burbank, OH 44214
330-352-1845

FRIEND BROTHERS LIMOUSIN

Victor Friend
HC 63 Box 16
Exchange, WV 26619
304-288-3171

OLD ENGLISH LIMOUSIN

Ed & Peggy Clark
2513 Clark Road
Enon Valley, PA 16120
724-622-2285

SUNRISE FARM

Jonah, Abbey, McKenna, Kelsey, and
Spencer Broughton
2939 Glor Rd.
Attica, NY 14011
585.535.0441

DOUBLE B GRAIN FARM

Mike Brubaker
262 Shade Road
McAlisterville, PA 17049
717-649-6929

JP'S LEE HILL FARMS

Jeanne Price Shannon
McComas, Owner
Joe Moore, Manager
1995 Ridge Rd.
Raphine, VA 24472
540-569-6219

PECK LIMOUSIN

94 Spider Ridge Rd.
Parkersburg, WV 26101
304-494-4661

T&J CATTLE COMPANY

Joe, Tabby, and Samantha Moore
94 Brae Maree Lane
Raphine, VA 24472
540.569.6219

ELDER'S BRANCH FARMS

Jim Delaplaine- Chris Seymore
2651 Doran Rd.
Three Springs, PA 17264
717-752-0127 or 717-752-0868

KS LIMOUSIN

Kyle, Andrea, Kolden & Kaleb Smith
562 Holland Rd.
Java Village, NY 14083
585-457-4287

PLEASANT HOME CATTLE**COMPANY**

Rob Stroller and sons
4649 Pleasant Home Rd.
Creston, OH 44217
330.939.0302

VAN HORN LIMOUSIN

Tim, Freda, Josh, &
Sarah Van Horn
397 S. Pascal Rd.
Malta, OH 43758
740-962-2229

Welcome...

Welcome to the Third Annual Fall Preview, a sale of some of the best Limousin breeding cattle in the region. The consignors are offering some of their very best, and the pedigrees represent the best that can be found anywhere in the country. The breeders represented here have enjoyed tremendous successes with their cattle over the years, and they have agreed to share their very best in this sale.

The cattle are in the prime of their lives. The bred females carry the service of the breed's very best sires, and the calves at side of many of the females will make great show prospects at any level of competition. All are backed with the great confidence of the breeder's great reputations.

It is a pleasure to be working with these great breeders for this sale, and I encourage all interested Limousin breeders to be with us on Saturday at 1:00 for the opportunity to purchase some of the very best seedstock they have ever produced.

Please contact me if I can be of assistance.

Keith Kisse

MAGS Rayleen Cow Family



MAGS Rayleen has been one of the foundation donor females at Circle L Limousin. She was a former successful show female and fertile and productive donor and brood cow. Two daughters sell and she sells bred to the National Western Grand Champion Lim-Flex Bull, Spring Creeks Urlacher 311U.

CLLL Rosalitta 0410X is from the Circle L ET program, and she is a flashy heifer calf by the popular KRVN Naskar. The April baby is an excellent show heifer prospect.

CLLL 343W is a Lim-Flex female from the superior Red Angus Sire 5L Direct Fire. She carries the service of the popular CL Burbank, the 2009 NAILE Grand Champion Lim-Flex bull.

I  **MAGS Rayleen**



IA  **CLLL Rosalitta**



Ref  **Spring Creek Urlacher**
Service Sire of Lot I

PUREBRED • FEMALE • HOMO POLLED • HOMO BLACK

MAGS Rayleen

03/02/2005 • MAGS 2369R • NPF1799814

CED	BW	WW	YW	MA	CEM	SC	ST	DOC	CW	RE	YG	MB	\$M
10	2.8	37	75	31	7	0.1		20	-14	-0.03	0.00	-0.01	41

AUTO BLACK DAKOTA 129J
EF MAIN STAY 541M
AUTO BLACK DAKOTA 129J

EXLR DAKOTA 353G
DFLC JET SET BPC 34Y
WULF'S GUARDIAN 5074G
EXLR LUVLY 081F
EXLR POLLED BENCHMARK709G
WULF'S GLENDA 7021G
COLE FIRST DOWN 46D
WULF'S MANDARIN 1121A

EXLR LIMITED EDITION 765J
MAGS MANDARIN 425L
MAGS GIRL'S GO FIRST

BW 75 WW YW

CONSIGNEE BY: CIRCLE L LIMOUSIN

AI 6-28-10 TO SPRING CREEKS URLACHER 311U

LOT 1A - CLLL ROSALITTA 0410X • Polled, Black

Purebred Heifer Calf by KRVN Naskar. Born 04/14/10.

EPD's: CED: 11, BW: 0.1, WW:38, YW: 75, MA: 23, CEM: 5, SC: 0.6

LIM-FLEX (50) • FEMALE • POLLED • BLACK

CLLL 343W

04/09/2009 • CLLL 343W •

CED	BW	WW	YW	MA	CEM	SC	ST	DOC	CW	RE	YG	MB	\$M
5	2.2	42	79	15	-1	0.6	18	11	7	0.57	-0.13	-0.17	37

C A FUTURE DIRECTION 5321
5L DIRECT FIRE 1641-6443
5L FIREFLY 174-1641 ET

GAR PRECISION 1680
C A MISS POWER FIX 308
RAA528460
5L FIREFLY 66-174
AUTO BLACK DAKOTA 129J
AUTO BLACK DAKOTA 129J
EXLR LIMITED EDITION 765J
MAGS GIRL'S GO FIRST

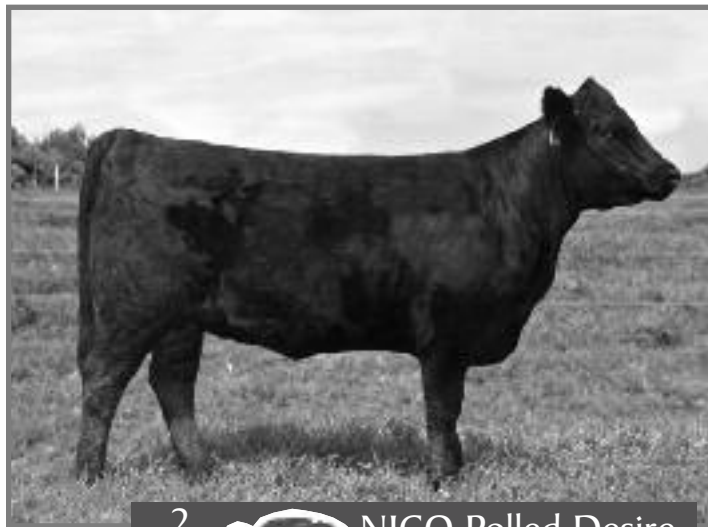
EF MAIN STAY 541M
MAGS RAYLEEN
MAGS MANDARIN 425L

BW WW YW

CONSIGNEE BY: CIRCLE L LIMOUSIN

AI 6-16-10 TO CL BURBANK

NICO This Kiss Cow Family



2 NICO Polled Desire



3 NICO Polled Devine



4 NICO Polled Hanna



4A NICO 28X

2 PUREBRED • FEMALE • DOUBLE POLLED • BLACK
NICO Polled Desire
 01/21/2009 • NICO6W • NPF1945404

CED	BW	WW	YW	MA	CEM	SC	ST	DOC	CW	RE	YG	MB	\$M
5	2.1	36	71	19	1	0.4		17	3	0.38	-0.13	-0.15	36

GPFF BLAQUE RULON
 MNWS FRONTIER 507R
 WELZ MACY 203M

EXLR DAKOTA 353G
 NICO THIS KISS
 NICO POLLED PRALINE

BLACK DIAMOND
 QUAIL RUN RAMONA BP
 EXLR DAKOTA 353G
 REI MISSY 970G
 WULF'S COUNT DOWN 9251C
 CANE RIDGE DAPHNE 011D
 WULF'S DAWSON 4421D
 NICO POLLED PORSHA

BW 78 WW 591 YW

CONSIGNED BY: MAPLE LANE FARM

AI 6-7-10 TO WULF'S SIRLOIN 3172S - SAFE

NICO Polled Desire is a product of embryo transfer and a daughter of MNWS Frontier 507R. She is a direct daughter of the great daughter of EXLR Dakota 353G, NICO This Kiss.

3 PUREBRED • FEMALE • DOUBLE POLLED • BLACK
NICO Polled Devine
 12/21/2008 • NICO83U • NPF1940768

CED	BW	WW	YW	MA	CEM	SC	ST	DOC	CW	RE	YG	MB	\$M
5	2.1	36	71	19	1	0.4		17	3	0.38	-0.13	-0.15	36

GPFF BLAQUE RULON
 MNWS FRONTIER 507R
 WELZ MACY 203M

EXLR DAKOTA 353G
 NICO THIS KISS
 NICO POLLED PRALINE

BLACK DIAMOND
 QUAIL RUN RAMONA BP
 EXLR DAKOTA 353G
 REI MISSY 970G
 WULF'S COUNT DOWN 9251C
 CANE RIDGE DAPHNE 011D
 WULF'S DAWSON 4421D
 NICO POLLED PORSHA

BW 80 WW 619 YW

CONSIGNED BY: MAPLE LANE FARM

AI 6-7-10 TO WULF'S SIRLOIN 3172S - SAFE

NICO Polled Devine is a full sister to Lot 2 and from the Maple Lane embryo transplant program. She carries the service of the calving ease sire, Wulf's Sirloin 3172S.

4 PUREBRED • FEMALE • DOUBLE POLLED • DOUBLE BLACK
NICO Polled Hanna
 04/23/2008 • NICO028U • NPF1918728

CED	BW	WW	YW	MA	CEM	SC	ST	DOC	CW	RE	YG	MB	\$M
8	0.9	41	76	16	1	0.8		19	13	0.56	-0.03	-0.14	37

GPFF BLAQUE RULON
 KRNV NASKAR 013N
 WL JU JU GAL 149J

IBRR BLACK SHADOW
 NICO SPECIAL KISS
 NICO THIS KISS

BLACK DIAMOND
 QUAIL RUN RAMONA BP
 COLE FIRST DOWN 46D
 CHR GOSSIP GAL
 FSHK BLACK OLY 357
 WLCC 07X
 EXLR DAKOTA 353G
 NICO POLLED PRALINE

BW 76 WW 652 YW 1040

CONSIGNED BY: MAPLE LANE FARM

AI 6-12-10 TO MAGS SHYLLO- SAFE

LOT 4A - NICO 28X • Polled, Black

Purebred Heifer Calf by Shillings Talladega. Born 03/30/10.
 EPD's: CED: 10, BW: 0.6, WW: 42, YW: 82, MA: 18, CEM: 3, SC: 0.6

NICO Polled Hanna and her heifer calf by Shillings Talladega make a great addition to the offering. The daughter of KRNV Naskar is a perfect profiling female and has the efficiency of the NICO This Kiss line of females.

NICO This Kiss Cow Family



5  SCGL Too Cute 753T



Ref  TMCK Little Kiss 577U

THE \$60,000 MEMBER OF THE NICO THIS KISS COW FAMILY. ONE OF THE TOP SELLING FEMALES IN THE 2009 TUBMILL CREEK FARMS "THE CROSSING SALE"



6  NICO One More Kiss

5  PUREBRED • FEMALE • DOUBLE POLLED • BLACK
SCGL Too Cute 753T

09/02/2007 • SCGL753T • NPF1900585

CED	BW	WW	YW	MA	CEM	SC	ST	DOC	CW	RE	YG	MB	\$M
8	1.9	38	69	17	-1	0.4		16	10	0.55	-0.14	-0.17	36

EXLR POLLED BENCHMARK709G
TUBB LAW DOG 009L
CHR JO DEE

WULFS DAWSON 4421D
PMDDB ALLIANCE
HUGS FULLBACK 81F
CHR MIDNIGHT PLAYMATE
BLACK DIAMOND
QUAIL RUN RAMONA BP
EXLR DAKOTA 353G
NICO POLLED PRALINE

GPFF BLAQUE RULON
NICO ONE MORE KISS
NICO THIS KISS

BW 75 WW YW

CONSIGNED BY: STEPHEN C GETZ

PE 7-20-10 - 9-5-10 TO DVFC BLUE CHIP - SAFE

LOT 5A - SCGL MIRANDA 033X • Double Polled, Double Black

Purebred Heifer Calf by DVFC Blue Chip 234S. Born 06/01/10.

EPD's: CED: 8, BW: 1.8, WW: 47, YW: 91, MA: 18, CEM: 3, SC: 0.6

A real sale highlight here! "Cutie" was one of Stephen's most successful show heifers. She was Reserve Champion Bred & Owned Female at Eastern Regionals, was Division III Reserve Champion Bred & Owned at Junior Nationals, and was Grand Champion of the West Virginia State Fair, Junior and Open Shows. Cutie's proof of producing ability is her stinger show heifer prospect at side by DVFC Blue Chip. Sells bred back the same way.

Her heifer calf by DVFC Blue Chip is a stinger show heifer prospect. Miranda is a thick made, freaky fronted little heifer with style to burn. She has a puppy dog disposition, is halter broken, and is ready to go. A junior could have a lot of fun with this heifer.

6  PUREBRED • FEMALE • DOUBLE POLLED • BLACK
NICO One More Kiss

03/08/2005 • NICO53R • NPF1816256

CED	BW	WW	YW	MA	CEM	SC	ST	DOC	CW	RE	YG	MB	\$M
5	2.2	42	79	15	-1	0.6		18	11	7	0.57	-0.13	-0.17 37

BLACK DIAMOND
GPFF BLAQUE RULON
QUAIL RUN RAMONA BP

EXLR DAKOTA 353G
NICO THIS KISS
NICO POLLED PRALINE

BW 78 WW 760 YW

CANE RIDGE BLACK DRAK
WULFS DIADEM 4260D
LKCC TOMAHAWKS TOUCHDOWN
AMBL FAVORITE GIRL 36W
WULF'S COUNT DOWN 9251C
CANE RIDGE DAPHNE 011D
WULFS DAWSON 4421D
NICO POLLED PORSHA

CONSIGNED BY: STEPHEN C GETZ/MAPLE LANE FARM

PE 6-1-10 - 8-15-10 TO TUBB LAW DOG, 8-16-10 - 9-5-10 TO DVFC BLUE CHIP

Black, double polled cow. One of the top females to come out of the Maple Lane program in recent years. One More Kiss has a stellar show career for Stephen Getz, including being named Supreme Champion over all breeds at the Ohio Valley Beef Spectacular. Just as impressive in production, she produced SCGL Too Cute, also selling in this sale. One more Kiss sells safe in calf for a full sib to SCGL Too Cute..

7

Planned Mating

Due 10/31/10
P10 - Red Angus X Recipient Dam

CED	BW	WW	YW	MA	CEM	SC	ST	DOC	CW	RE	YG	MB	\$M
10	2.2	54	104	28	7	0.6	21	15	43	0.39	0.07	0.03	46

HUNTS HI-LITER 245G
JCL LODESTAR 27L
LOGAN'S CHEERLEADER 280G

EXLR DAKOTA 353G
EXLR LUVLY 614M
EXLR 431G

WADDLES COBALT 3106
TNUH MISS C245
COLE FIRST DOWN 46D
TTCC CONFIDENCE MAKER
WULF'S COUNT DOWN 9251C
CANE RIDGE DAPHNE 011D
WULFS DAWSON 4421D
AMBL LUVLY 340Y

CONSIGNED BY: ELDERS BRANCH FARMS

Trait-leading EPDS are available through this planned mating offered by the Elder's Branch program. The polled and black calf due shortly after sale day will have a tremendously balanced EPD profile.

Sired by JCL Lodestar 27L and from the greatly appreciated Luvly line, a stellar calf and pedigree is anticipated.



Ref

JCL Lodestar 27L

Sire of Lot 7



8

KSLC Willma

8

LIM-FLEX(50) • FEMALE • DOUBLE POLLED • RED

KSLC Willma

09/27/2009 • KSLC927W • LFF1959744

CED	BW	WW	YW	MA	CEM	SC	ST	DOC	CW	RE	YG	MB	\$M
8	-0.4	36	71	20	3	0.1							

RED RYL ELWAY 58D
RED COLE MISTER "E" 9J
COLE FIRST LADY 9E

EXLR GAUCHO 362K
PBRS RUDY 538R
MAGS MIRAGE

BW	WW	YW
64		

CONSIGNED BY: KS LIMOUSIN

OPEN

GRAND CHAMPION FEMALES AT THE 2010 NEW YORK STATE FAIR

KSLC Willma was the Grand Champion Female at the 2010 New York State Fair. She is a superb individual; complete and sound in every way. She will make a perfect replacement female and she can fit at the top of any program.



9

MMBB Miss Xtra Kisses 06X

9

LIM-FLEX(25) • FEMALE • DOUBLE POLLED • BLACK

MMBB Miss Xtra Kisses 06X

02/14/2010 • MMBB06X • LFF1951322

CED	BW	WW	YW	MA	CEM	SC	ST	DOC	CW	RE	YG	MB	\$M
-1.9		46	88	27									

CONNEALY TIMELINE
L L JUMPIN JACK
R B Z JESSENIA

OKLF LINEBACKER 341L
MMBB MISS TRIXIE 01T
ERWINDALE SUNROSE 501

BW	WW	YW
81		

CONSIGNED BY: SUNRISE FARMS

OPEN

RESERVE GRAND CHAMPION FEMALES AT THE 2010 NEW YORK STATE FAIR

MMBB Miss Xtra Kisses 06X is a tremendous Lim - Flex female from the Sunrise Farms program. She was selected as the Reserve Grand Champion Female at the 2010 New York State Fair. She will be a perfect replacement female for the most particular.

10

PUREBRED • FEMALE • DOUBLE POLLED • DOUBLE BLACK

TINY Whiskey Lullaby

12/01/2009 • TAFV393W • NPF1947187

CED	BW	WW	YW	MA	CEM	SC	ST	DOC	CW	RE	YG	MB	\$M
6	0.6	32	66	26	-1	0.5		18	-2	0.26	-0.12	-0.06	38

GPFF BLAQUE RULON
LESF ASPHALT 9N
GPFF EXTRA SWEET ELITE

BLACK DIAMOND
QUAIL RUN RAMONA BP
LKCC TOMAHAWKS TOUCHDOWN
HC EXTRAORDINARY HCR 61X
COLE FIRST DOWN 46D
WULF'S ESTHER 5146 E
TEHAMA 5204 TRAV 565
CLONCH MISS 8076H

WULFS LIFT-OFF 5346L
CLONCH LIFT ME 393N
CLONCH MISS 0025

BW 72 WW YW

CONSIGNED BY: VAN HORN LIMOUSIN

OPEN

TINY Whiskey Lullaby is a powerful young heifer calf from the Van Horn show string. She is from the great cow family that has produced some of the absolute best in the breed. TINY Whiskey Lullaby is one of the top open heifers calves in the offering.



10

TINY Whiskey Lullaby

11

LimFlex (50) • FEMALE • HOMO POLLED • HOMO BLACK

JLWM 025X

04/25/2010 • JLWM 025X

CED	BW	WW	YW	MA	CEM	SC	ST	DOC	CW	RE	YG	MB	\$M
8	2.6	48	89	20	7								

CARROUSELS PURE POWER
JLWM PEPPY 7230T
JLWM CAYENNE PEPPER 4110P

GPFF BLAQUE RULON
TUBB FIRST CLASS 666F
COLE WULF HUNT
WBBK RED PEPPER 2009M
B/R NEW DESIGN 036
BON VIEW GAMMER 85
RITO 616 OF 4B20 6807
JWK GAY BIRD 9249

BON VIEW NEW DESIGN 878
JL NEW DESIGN P18
JL 616 GAY BIRD M28

BW WW YW

CONSIGNED BY: JP'S LEE HILL FARMS

OPEN

JLWM 025X is a tremendous show heifer calf prospect from the JP's Lee Hill Farms program. She has excellent EPDs derived from her excellent sire and Angus dam. She is one for the serious breeder and competitive showman. She has an extraordinary future in store.



11

JLWM 025X

12

LIMFLEX (75) • FEMALE • DOUBLE POLLED • DOUBLE BLACK

DBGR Love 002X

02/12/2010 • BLGF002X • LFF1959732

CED	BW	WW	YW	MA	CEM	SC	ST	DOC	CW	RE	YG	MB	\$M
6	0.7	34	72	25	-1	0.3		9	5	-0.06	0.16	0.18	45

LFF1959732
EXLR RIGHT OF WAY 177R
EXAR SCOTCH CAP 1548

GPFF BLAQUE RULON
GPFF EXTRA SWEET ELITE
BON VIEW NEW DESIGN 1407
EXAR SCOTCH CAP 9427
AUTO BLACK DAKOTA 129J
EXLR LUVIY 084F
BLACK DIAMOND
QUAIL RUN RAMONA BP

EXLR NEW GENERATION 071M
DLRF SOLITAIRE 261S
GPFF SOLITAIRE

BW 72 WW 547 YW

CONSIGNED BY: DOUBLE B GRAIN FARM

OPEN

DBGR Love 002X is a Lim - Flex female of the highest quality. She is powerfully and methodically stacked with the breed's most respected individuals. Her sire and maternal grand sire are both past National Champions. Her maternal grand dam is a full sister to GPFF Blaque Rulon.



12

DBGR Love 002X

13

PUREBRED • FEMALE • DOUBLE POLLED • DOUBLE BLACK

EBFL Betty 355X

04/02/2010 • EBFL355X • NPF1963036

CED	BW	WW	YW	MA	CEM	SC	ST	DOC	CW	RE	YG	MB	\$M
8	1.0	37	71	35	-3	1.0		18	16	0.11	-0.05	0.06	44

EXLR POLLED RESOLVE 175G
EXLR EXCELLANTE 251L
EXLR 199H

EXLR POLLED RESOLVE 175G
DLRF 21L

CORL MISS IRONSIDES 21G

BW	WW	YW
78		

KRMC BLACK LEGACY 917B
LKCC SMITH CATTLE 110C
WULFS FANFARE 4055F
EXLR 558F
KRMC BLACK LEGACY 917B
LKCC SMITH CATTLE 110C
LOJW IRONSIDES 3P
OAKLEAF ANNIE 13X

CONSIGNEE BY: ELDER'S BRANCH FARMS

OPEN

EBFL Betty 355X is a flashy show heifer prospect from the Elder's Branch program. She traces to the great old cow line of Oakleaf Annie 13X. Perfection is the result of their genetic contribution.



13

EBFL Betty 355X

14

LIM-FLEX(44) • FEMALE • HOMO POLLED • DOUBLE BLACK

EBFL Majesty 364X

04/13/2010 • EBFL364X • LFF1963044

CED	BW	WW	YW	MA	CEM	SC	ST	DOC	CW	RE	YG	MB	\$M
0.4	42	86	34		0.7								

EXLR POLLED RESOLVE 175G
EXLR EXCELLANTE 251L
EXLR 199H

N BAR POWER PLAY B363 C52
EBAF MAJESTY 107S

MAJESTY 0A16 OF 6442 8C11

BW	WW	YW
88		

KRMC BLACK LEGACY 917B
LKCC SMITH CATTLE 110C
WULFS FANFARE 4055F
EXLR 558F
N BAR POWER PLAY Y3852
N BAR LADY IDA Z1453
IDEAL 6442 OF 8103 351
RITA 8C11 OF 7T26 SHORITO

CONSIGNEE BY: ELDER'S BRANCH FARMS

OPEN

EBFL Majesty 364X is a homozygous polled Lim - Flex female from the Elder's Branch breeding program. Her nicely balanced numbers and big milk number make her a great genetic piece for the future.



14

EBFL Majesty 364X

15

PUREBRED • FEMALE • DOUBLE POLLED • BLACK

MCC Good Choice

11/01/2009 • ALEB39W • NPF1959590

CED	BW	WW	YW	MA	CEM	SC	ST	DOC	CW	RE	YG	MB	\$M
5	2.6	39	73	20	-3	0.5		15	0	0.54	-0.15	-0.18	36

GPF BLAQUE RULON
LESF ASPHALT 9N
GPF EXTRA SWEET ELITE

MAGS KAPTAIN AMERICA
LESF JOYCE 5305R
AUTO JOYCE 218L

BW	WW	YW
80		

BLACK DIAMOND
QUAIL RUN RAMONA BP
LKCC TOMAHAWKS TOUCHDOWN
HC EXTRAORDINARY HCR 61X
EXLR DAKOTA 353G
MAGS GLORIA
WULFS GUARDIAN 5074G
EXLR LUVLY 087F

CONSIGNEE BY: CALEB MILLER

OPEN

MCC Good Choice is a beautiful daughter of LESF Asphalt 9N from the AUTO Joyce 218L cow family. The genetics represented here are among the most highly appreciated in the industry. This is a great young female from Caleb Miller.



Ref

AUTO Joyce 218L

Maternal Granddam of Lot 15



Ref  Willows Moon Dance 114L

Dam of Lot 16



Ref  MAGS Scotland

Sire of Lot 17

16

PUREBRED • FEMALE • DOUBLE POLLED • HOMO BLACK

JLWM Well Done 9242W

09/24/2009 • JLWM9242W • NPF1957153

CED	BW	WW	YW	MA	CEM	SC	ST	DOC	CW	RE	YG	MB	\$M
3	2.3	36	67	29	-3	0.3		16	-2	0.16	-0.06	-0.01	41

GPF BLAQUE RULON
LESF ASPHALT 9N
GPF EXTRA SWEET ELITE

CHAZ FIRST CHOICE 6004F
WILLOWS MOON DANCE 114L
QUAIL RUN PROGRESS BPHP

BW 80 WW 535 YW

BLACK DIAMOND
QUAIL RUN RAMONA BP
LKCC TOMAHAWKS TOUCHDOWN
HC EXTRAORDINARY HCR 61X
COLE FIRST DOWN 46D
CHAZ MISS ROXANNE 92C
WULF'S POLLED PROGRESS
HC EXTRAORDINARY HCR 61X

CONSIGNEE BY: JP'S LEE HILL FARMS

OPEN

JLWM Well Done 9242W is from one of the great old cow families from JP's Lee Hill Farms. The daughter of LESF Asphalt 9N is from the high performing Willows Moon Dance 114L. Much success has been garnered from other members of this cow family. She's one of the top heifer calves in the offering.

17

LIM-FLEX(75) • FEMALE • HOMO POLLED • DOUBLE BLACK

KSLC What A Cheesecake

09/14/2009 • KSLC914W • LFF1959745

CED	BW	WW	YW	MA	CEM	SC	ST	DOC	CW	RE	YG	MB	\$M
5	1.7	45	86	20	0	0.2			24	0.28	0.18	0.22	50

BR MIDLAND
MAGS SCOTLAND
MAGS MARQUEE

WULFS GUARDIAN 5074G
CHEESECAKE
QUAIL RUN EDITH BP

BW 76 WW YW

TWIN VALLEY PRECISIONE161
BR ROYAL LASS 7036-19
EXLR DAKOTA 353G
MAGS JEWEL
WULFS RAMBLER 8400X
WULFS EXAMPLE 5074E
HARVEST OLYMPUS
LKCC SMITH CATTLE 418A

CONSIGNEE BY: KS LIMOUSIN

OPEN

KSLC What A Cheesecake is a tremendous Lim - Flex female from the KS program. She is from the renowned donor female, Cheesecake. Her sire, MAGS Scotland, is one of the top Lim - Flex breeding sires in the industry today. She has great numbers and is a superb individual.

18

PUREBRED • FEMALE • DOUBLE POLLED • DOUBLE BLACK

HEPS Briar Patch

09/10/2009 • HEPS07W • NPF1963233

CED	BW	WW	YW	MA	CEM	SC	ST	DOC	CW	RE	YG	MB	\$M
5	1.8	34	67	16	0	0.4							

GPF BLAQUE RULON
HEPS BLUE BOY
GPF CASSY

LKCC TOMAHAWKS TOUCHDOWN
CASK POLLED STEFI 111E
MIDNIGHT RUBY MGVF 32A

BW 83 WW 496 YW

BLACK DIAMOND
QUAIL RUN RAMONA BP
LKCC EXPRESSWAY 193C
GPF CASSANDRA
LKCC BLACK NUGGET 906U
LKCC SMITH CATTLE 755S
CLL GRINNELL 36W
SUNNY RAY

CONSIGNEE BY: PECK LIMOUSIN

OPEN

The Peck program is offering this great young yearling heifer. She is sired by a great son of GPF Blaques Rulon, and she is from a good daughter of Tomahawk's Touchdown.

19

PUREBRED • FEMALE • DOUBLE POLLED • BLACK

MIMA Contessa

09/14/1998 • MIMA139H • NPF1500270

CED	BW	WW	YW	MA	CEM	SC	ST	DOC	CW	RE	YG	MB	\$M
10	-0.9	27	58	30	5	-0.4	17	17	7	0.45	-0.17	-0.10	36

WULFS QUARTERBACK 4222B
WULFS FOUNDATION 3497 F
WULF'S CAKE WALK 3097C

LKCC TOMAHAWKS TOUCHDOWN
MISS WOLFETTE 4221S
WULFS RAMBLER 8400X
YKCL MISS EARTHQUAKE 717U
WULFS BUSINESSMAN 714W
MISS WOLFETTE 9081X
HIPPS POLLED ELEVATION
MOSBO PRIMA DONNA 26P

WULF'S POLLED PROGRESS
ROLL POLLED DESIRE
MOSBO POLLED UMBER P26U

BW 70 WW 590 YW 907

CONSIGNED BY: OLD ENGLISH ACRES

AI 8-26-10 TO NICO POLLED LEGACY •

PE 9-5-10 - 9-30-10 TO EOEА BATTLESHIP

LOT 19A - EOEА ONE HOT MAMA • Double Polled, Double Black

Purebred Heifer Calf by TUBB Law Dog 009L. Born 04/17/10.

EPD's: CED: 11, BW: 0.1, WW: 29, YW: 58, MA: 24, CEM: 3, SC: -0.1

MIMA Contessa is a mature daughter of Wulf's Foundation. She has a great heifer calf at side by TUBB Law Dog 009L.

20

PUREBRED • FEMALE • DOUBLE POLLED • DOUBLE BLACK

NICO Polled Centena

05/04/2006 • NICO118S • NPF1854934

CED	BW	WW	YW	MA	CEM	SC	ST	DOC	CW	RE	YG	MB	\$M
5	2.1	51	90	30	0	0.9		25	29	0.36	-0.03	-0.03	45

EXLR POLLED RESOLVE 175G
EXLR EXCELLANTE 251L
EXLR 199H

KRMC BLACK LEGACY 917B
LKCC SMITH CATTLE 110C
WULFS FANFARE 4055F
EXLR 558F
WULFS GUARDIAN 5074G
DBRO GONE FISHING 415G
COLE FIRST DOWN 46D
ARER P KESHIA

DVFC WARDEN 233K
NICO POLLED BEYONCE
NICO AMERICAN MAID

BW 76 WW YW

CONSIGNED BY: MAPLE LANE FARM

AI 7-24-10 TO AHCC WESTWIND W544

LOT 20A - NICO 118X • Polled, Black

Purebred Heifer Calf by MAGS Unvalued. Born 04/18/10.

EPD's: CED: 5, BW: 2.0, WW: 55, YW: 96, MA: 30, CEM: 2, SC: 0.9

NICO Polled Centena is a big numbered daughter of EXLR Excellante 251L. She traces on down the line to the great old cow families in place at Maple Lane Farm.



20A

NICO 118X



Ref



AHCC Westwind W544

Service Sire of Lot 20

21

PUREBRED • FEMALE • DOUBLE POLLED • RED

SCGL Chili Pepper 125L

11/20/2001 • SCGL125L • NPF1666123

CED	BW	WW	YW	MA	CEM	SC	ST	DOC	CW	RE	YG	MB	\$M
3	3.2	45	84	19	2	0.1	19	16	11	0.39	-0.06	-0.13	39

WULFS DAWSON 4421D
EXLR POLLED BENCHMARK709G
PMDB ALLIANCE

LKCC TOMAHAWKS TOUCHDOWN
MISS WOLFETTE 4221S
URANUS
WLCC BLACK INTRIGUE
COLE FIRST DOWN 46D
CHAZ MISS ROXANNE 92C
POLLED PACK LEADER 1182U
MISS WOLFETTE 1161N

CHAZ FIRST CHOICE 6004F
SEKL KATYA 9112J
MINERICH'S KATYA 297C

BW 75 WW YW

CONSIGNED BY: ROLLING ACRES

OPEN

LOT 21A - SCGL BLACK PEPPER 032X • Double Polled, Black

Purebred Heifer Calf by DVFC Blue Chip 234S. Born 05/30/10.

EPD's: CED: 6, BW: 3.0, WW: 51, YW: 99, MA: 19, CEM: 5, SC: 0.4

A top producer for many years, Chili produced a Wulf's Highlighter son that was named Grand Champion of the West Virginia Beef Expo and topped that sale. A full sib to that bull was Reserve Grand Champion heifer and was also a high seller and the list goes on. She milks from a perfect udder and has a lot of earning potential left.

Lot 21A, a black double polled heifer. Black Pepper is a high performing, long bodied, clean fronted heifer that would make a nice junior project. She has a quiet disposition and is halter broken. Sells open.



Ref



DVFC Blue Chip 234S

Sire of Lot 21A

22 RTTB Rochelle 5105R

PUREBRED • FEMALE • DOUBLE POLLED • DOUBLE BLACK
06/15/2005 • RTTB5105R • NPF1806977

CED	BW	WW	YW	MA	CEM	SC	ST	DOC	CW	RE	YG	MB	\$M
10	-0.8	33	70	19	3	0.0							0

COLE WULF HUNT
 RTTB NATHANEAL 0206N
 WULFS KOTTEN KANDY 0206K
 WULFS GUARDIAN 5074G
 RTTB LUVLY 1251L
 WULFS JULIETTE 9025J
 BW 75 WW YW 838


COLE FIRST DOWN 46D
 COLE CATALINA 3309C
 WULFS GAGE 5158G
 MISS WULFETTE 5251 E
 WULFS RAMBLER 8400X
 WULFS EXAMPLE 5074E
 WULFS FANFARE 4055F
 MISS WULFETTE 7011G

CONSIGNED BY: PLEASANT HOME CATTLE CO.

OPEN
LOT 22A - RTTB 5105X • Polled, Black
 Purebred Bull Calf by RTTB Usher 0204U. Born 07/29/10.
 EPD's: CED: 7, BW: 1.7, WW: 48, YW: 90, MA: 23, CEM: 3, SC: 0.4

This is a moderately framed outstanding uddered cow that has produced 4 calves in 3 years. She is sired by a son of COLE Wulf Hunt that we raised.



Ref  **LVLS Top Criteria 8862P**
Sire of Lot 23

24 EXG Terri 2713T RVDR

LIM-FLEX(50) • FEMALE • DOUBLE POLLED • BLACK
03/26/2007 • RVDR2713T • LFF1881325

CED	BW	WW	YW	MA	CEM	SC	ST	DOC	CW	RE	YG	MB	\$M
9	-1.5	37	80	30	2	0.6		7	31	-0.30	0.41	0.52	57

B/R NEW DESIGN 036
 BON VIEW NEW DESIGN 878
 BON VIEW GAMMER 85
 EXLR DAKOTA 353G
 EXLR REBECCA 004P
 EXLR 005H
 BW 64 WW 543 YW

V D A R NEW TREND 315
 B/R BLACKCAP EMPRESS 76
 BON VIEW BANDO 598
 BON VIEW GAMMER 233
 WULF'S COUNT DOWN 9251C
 CANE RIDGE DAPHNE 011D
 KRMC BLACK LEGACY 917B
 LVLS REBECA

CONSIGNED BY: CIRCLE L LIMOUSIN

OPEN
LOT 24A - CLLL 2713X • Polled, Black
 Purebred Bull Calf by CLLL Cobalt. Born 09/01/10.
 EPD's: CED: 11, BW: -1.3, WW: 45, YW: 91, MA: 31, CEM: 3, SC: 0.4

EXG Terri 2713T is an excellent Lim - Flex female from a tremendous cow family. She is from a powerful purebred daughter of EXLR Dakota 353G and the Rebeca cow family. She has a stout bull calf at side.

23 LVLS Top Girl 879 IT

PUREBRED • FEMALE • POLLED • HOMO BLACK
01/11/2007 • LVLS879IT • NPF1879064

CED	BW	WW	YW	MA	CEM	SC	ST	DOC	CW	RE	YG	MB	\$M
8	1.3	54	98	27	4	0.2		15	23	0.58	-0.070	0.00	47

COLE WULF HUNT
 LVLS TOP CRITERIA 8862P
 LVLS8862M
 LVLS SECRET WEAPON 4408K
 LVLS8791R
 LVLS8791M
 BW 77 WW 587 YW

COLE FIRST DOWN 46D
 COLE CATALINA 3309C
 WZRK BIG KAHUNA 8046K
 LVLS 3862G
 LVLS FARMER 4G
 LVLS 408H
 LVLS 66G
 LVLS 3791G

CONSIGNED BY: PLEASANT HOME CATTLE CO.

OPEN
LOT 23A - RTTB 5105X • Polled, Black
 Purebred Heifer Calf by RTTB Usher 0204U. Born 08/10/10.
 EPD's: CED: 6, BW: 1.2, WW: 59, YW: 105, MA: 26, CEM: 4, SC: 0.5

This is an outstanding young cow with strong numbers throughout. She has raised 2 heifer calves for Pleasant Home Cattle Co. and has done an outstanding job. Excited about the future of her first heifer calf in the bred heifer pen out of New Generation, Pleasant Home has decided to offer this outstanding female.



23  **LVLS Top Girl 879 IT**



24  **EXG Terri 2713T RVDR**



25

TMCK Nora 503T



Ref

Wulfs Shop Talk 2332S

Sire of Lot 26



Ref

CLLL Burbank

Sire of Lot 25A

25

PUREBRED • FEMALE • HOMO POLLED • BLACK

TMCK Nora 503T

01/12/2007 • TMCK503T • NPF1879136

CED	BW	WW	YW	MA	CEM	SC	ST	DOC	CW	RE	YG	MB	\$M
3	1.9	33	66	24	-3	0.3		16	-4	0.49	-0.25	-0.16	36

GPF BLAQUE RULON
LESF ASPHALT 9N
GPF EXTRA SWEET ELITE

WULFS FOUNDATION 3497 F
ANLC 21H
OAKM LADY 366D

BW 70 WW 576 YW 770

BLACK DIAMOND
QUAIL RUN RAMONA BP
LKCC TOMAHAWKS TOUCHDOWN
HC EXTRAORDINARY HCR 61X
WULFS QUARTERBACK 4222B
WULF'S CAKE WALK 3097C
OAKM LORD OLYMPIAD 05B
OAKM LADY ANTOINE 852B

CONSIGNEE BY: FAWLEY FARMS

OPEN

LOT 25A - FWLY 503X • Homo Polled, Black

Purebred Heifer Calf by CLLL Burbank. Born 09/01/10.

EPD's: CED: 3, BW: 2.9 WW: 44, YW: 93, MA: 23, CEM: 3, SC: 0.0

TMCK Nora 503T is a heavy milking daughter of LESF Asphalt 9N. Her dam has been an excellent donor female for the Larry Simmons and Tubmill Creek programs. Her 24 Milk EPD makes her one of the great milking daughters of LESF Asphalt 9N. She has the first calf born by CL Burbank. This excellent pair makes a tremendous lot for the Fall Preview sale offering.

26

LIM-FLEX(75) • FEMALE • DOUBLE POLLED • DOUBLE BLACK

TJMR Renown 818U

09/22/2008 • TJMR818U • LFF1963494

CED	BW	WW	YW	MA	CEM	SC	ST	DOC	CW	RE	YG	MB	\$M
0.7	48	93	22			0.5			26	0.23	0.05	0.17	50

CARROUSELS PURE POWER
WULFS SHOP TALK 2332S
WULFS MYRLENE 2332M

EXLR NEW GENERATION 071M
BOHI RENOWN 338R
DAVIS ROSETTA 9514

BW 76 WW YW

GPF BLAQUE RULON
TUBB FIRST CLASS 666F
COLE WULF HUNT
WULFS JOY BELLS 9202J
AUTO BLACK DAKOTA 129J
EXLR LUVLY 084F
GAR SLEEP EASY 1009
DAVIS ROSETTA OF HBR SP50

CONSIGNEE BY: T&J CATTLE CO.

OPEN

LOT 26A - TJMR 026X • Polled, Black

Purebred Heifer Calf by SYES User Friendly 524U. Born 09/09/10.

EPD's: BW: -1.1, WW: 45, YW: 85, MA: 24, SC: 0.5

TJMR Renown 818U is rich in the breed's highest performing and greatest milking genetics. The daughter of Wulf's Shop Talk 2332S is from an excellent Lim - Flex female. She has a terrific set of EPDs and she is a solid foundation Lim - Flex female. She has a heifer calf by the popular SYES User Friendly.

27

PUREBRED • FEMALE • DOUBLE POLLED • DOUBLE BLACK

NICO Fast Track

04/03/2008 • NICO044U • NPF1918729

CED	BW	WW	YW	MA	CEM	SC	ST	DOC	CW	RE	YG	MB	\$M
8	0.8	36	71	19	6	0.5		5	10	0.41	-0.04	-0.02	40

AUTO BLACK DAKOTA 129J
CARROUSELS NASDAQ
CARROUSELS JAMAICA

SIVL CORL OREO COOKIE
NICO POLLED FAR MORE
NICO DESIRAE

EXLR DAKOTA 353G
DFLC JET SET BPC 34Y
COLE FIRST DOWN 46D
CANE RIDGE CELEST 6169
WULFS QUARTERBACK 4222B
EAFM COOKIE
COLE FIRST DOWN 46D
NICO POLLED PORSHA

BW WW 603 YW

CONSIGNED BY: MAPLE LANE FARM

AI 6-7-10 TO SYES USER FRIENDLY

NICO Fast Track is a daughter of the National Champion, Carrouseles Nasdaq. The polled and black female is a descendant of the superior NICO Polled Porsha cow family. She sells safe to the popular SYES User Friendly 524U.



Ref



Carrouseles Nasdaq

Sire of Lot 27

28

PUREBRED • FEMALE • DOUBLE POLLED • DOUBLE BLACK

CYKY Giving Hope

04/07/2008 • CYKY310U • NPF1926055

CED	BW	WW	YW	MA	CEM	SC	ST	DOC	CW	RE	YG	MB	\$M
5	2.8	45	87	22	2	0.4							

JCL LODESTAR 27L
KRVN PICANTE 036P
CHR KOKO

GPFF BLACK POLLED EQUITY
CYKY EARLY MIDNIGHT
NICO PEARL

HUNTS HI-LITER 245G
LOGAN'S CHEERLEADER 280G
EXLR HERITAGE 056H
BLACK MOLLY KDPI 62F
NICO POLLED LEGACY
TOPS KATHY 88 TK48
WULFS DAWSON 4421D
NICO POLLED PEARLINE

BW 79 WW 614 YW

CONSIGNED BY: MAPLE LANE FARM

AI 6-7-10 TO SYES USER FRIENDLY 524U

CYKY Giving Hope is a daughter of the popular KRVN Picante 036P, the son of JCL Lodestar 27L.

The beautifully designed female has a nicely balanced and desirable set of EPDs. She is from an excellent cow family, perfected over time at Maple Lane Farm.



28



CYKY Giving Hope

29

PUREBRED • FEMALE • DOUBLE POLLED • DOUBLE BLACK

NICO Polled Aggie

07/14/2008 • NICO87U • NPF1940769

CED	BW	WW	YW	MA	CEM	SC	ST	DOC	CW	RE	YG	MB	\$M
6	2.2	41	78	17	2	0.3		13	13	0.44	-0.04	-0.10	39

GPFF BLAQUE RULON
MNWS FRONTIER 507R
WELZ MACY 203M

ANDERS JAG
NICO LENE HP/B
NICO DESIRAE

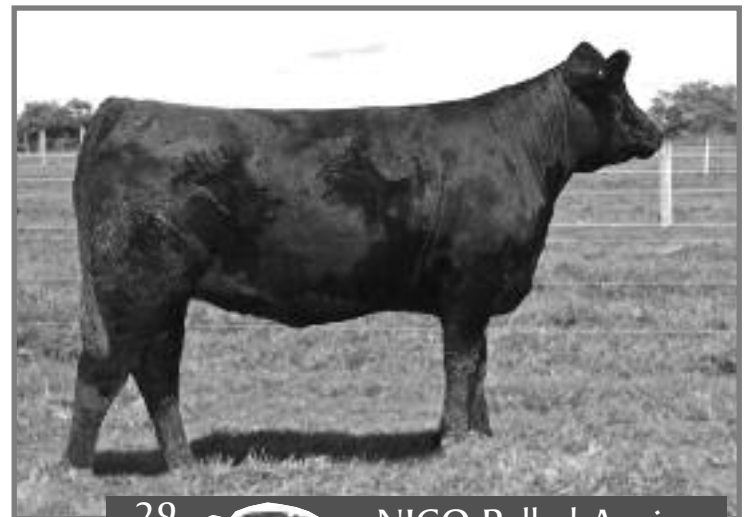
BLACK DIAMOND
QUAIL RUN RAMONA BP
EXLR DAKOTA 353G
REI MISSY 970G
GREENWOODPOLLED455ROCKET
ANDERS GEMINI
COLE FIRST DOWN 46D
NICO POLLED PORSHA

BW 72 WW 578 YW

CONSIGNED BY: MAPLE LANE FARM

AI 6-12-10 TO EXLR EXCELLANTE 251L

NICO Polled Aggie is a daughter of MNWS Frontier 507R and from the NICO Polled Porsha cow family. This female carries to service of EXLR Excellante 251L, the homozygous polled and homozygous black son of EXLR Polled Resolve.



29



NICO Polled Aggie

30 LIM-FLEX(68) • FEMALE • HOMO POLLED • HOMO BLACK EBFL 296W

04/06/2009 • EBFL296W • LFF1927347

CED	BW	WW	YW	MA	CEM	SC	ST	DOC	CW	RE	YG	MB	\$M
8	0.9	36	71	31	-4	0.9			10	0.09	-0.04	0.01	42

EXLR POLLED RESOLVE 175G
EXLR EXCELLANTE 251L
EXLR 199H

LESF ASPHALT 9N
EBFL 158T
NA FANCY LADY 9191

KRMC BLACK LEGACY 917B
LKCC SMITH CATTLE 110C
WULFS FANFARE 4055F
EXLR 558F
GPFF BLAQUE RULON
GPFF EXTRA SWEET ELITE
WESTWIND FINESSE 1113
N A LADY BIG SKY MAC 105

BW 79 WW YW

CONSIGNED BY: FRIEND BROTHERS LIMOUSIN

AI 5-26-10 TO AUTO CIGAR 175E

PE 6-10-10 - 8-30-10 TO SCGL HAIR BEAR 327N

EBFL 296W is a double homozygous Lim - Flex female. The female has an excellent future as an efficient brood cow.

31 LIM-FLEX(50) • FEMALE • HOMO POLLED • DOUBLE BLACK SPRNG CRKS Waves 8276W

04/03/2009 • BMAS8276W • LFF1940075

CED	BW	WW	YW	MA	CEM	SC	ST	DOC	CW	RE	YG	MB	\$M
4	1.0	39	74	17	3	0.5		12	36	-0.20	0.40	0.26	48

GPFF BLAQUE RULON
CARROUSELS PURE POWER
TUBB FIRST CLASS 666F

W K RAINMAN 3204
BOX L PRINCESS 8551
BOX L PRINCESS 200

BLACK DIAMOND
QUAIL RUN RAMONA BP
WULFS RAMBLER 8400X
TUBB MISS P UPDATE 089Y
KESSLERS RAINMAN 002
LLB KINCHTRY ANN 175Z
EILEENMERE LAD W K 8008
BLACKCAP BESS H K 530

BW 94 WW 661 YW

CONSIGNED BY: KS LIMOUSIN

AI 7-28-10 TO WULF'S SPRINGLOADED

PE 8-16-10 - 9-11-10 TO CLLL AVENGER 915U

Spring Creeks Waves 8276W is the daughter of Carrouseles Pure Power and from a good uddered Angus female. She is sound and efficient from end to end. She is an excellent replacement female for the most discriminating buyer.

32 PERCENTAGE • FEMALE • POLLED • DOUBLE BLACK SPRNG CRKS Winnie 8265W

04/01/2009 • BMAS8265W • NXF1934607

CED	BW	WW	YW	MA	CEM	SC	ST	DOC	CW	RE	YG	MB	\$M
7	1.2	36	68	11	3	0.4		4	23	0.42	0.03	-0.06	38

GPFF BLAQUE RULON
CARROUSELS PURE POWER
TUBB FIRST CLASS 666F

EXLR INTRIGUE 4166K
EXLR PRIDEMERE 7108N
EXLR PRIDEMERE 224K

BLACK DIAMOND
QUAIL RUN RAMONA BP
WULFS RAMBLER 8400X
TUBB MISS P UPDATE 089Y
EXLR INTRIGUE 361G
SUMMITCREST QUEEN Y213
EXLR POLLED BENCHMARK709G
EXLR 570G

BW 90 WW 629 YW

CONSIGNED BY: KS LIMOUSIN

AI 7-28-10 TO WULF'S SPRINGLOADED

PE 8-16-10 - 9-11-10 TO CLLL AVENGER 915U

Spring Creeks Winnie 8265W is one of the good daughters of Carrouseles Pure Power in the offering. She is a powerful and sound breeding piece.

33 LIM-FLEX(50) • FEMALE • DOUBLE POLLED • RED KSLC Whistling Dixie

03/20/2009 • KSLC320W • LFF1940622

CED	BW	WW	YW	MA	CEM	SC	ST	DOC	CW	RE	YG	MB	\$M
	0.8	42	85	29					25	-0.45	0.36	0.30	51

LCHMN GRANDCANYON 1244G
J BAR 7 GRAND CANYON 2222
LCHMN DARBY H1046

WULFS KUDOS 5519K
WULFS PINK 4504P
WULFS MYRA JANE 2308M

BUF CRK CHF 824-1658
KRN REBA'S ROBIN
LMN IMPRESSIVE ROB1095B
LMAN DARBY B1009
RPLF GALVESTON 416G
LBLN BROOKS EMMY 519E
WULFS GUARDIAN 5074G
WULFS JUSTINA 9073J

BW 71 WW YW

CONSIGNED BY: KS LIMOUSIN

PE 8-16-10 - 9-11-10 TO CLLL AVENGER 915U

KSLC Whistling Dixie is an impressive Lim - Flex female. She is from the heart of the KS breeding herd and she has been a part of the KS show string. She is fault free in her genetic design and she makes herself available to improve the Lim-Flex gene pool.

34 PUREBRED • FEMALE • DOUBLE POLLED • DOUBLE BLACK BLGF Tatianna 908W

03/28/2009 • BLGF908W • NPF1939420

CED	BW	WW	YW	MA	CEM	SC	ST	DOC	CW	RE	YG	MB	\$M
11	0.7	45	90	21	7	0.6		14					

JCL LODESTAR 27L
SNRS STRAIGHT FLUSH 13S
VORE LACY 133L

EXLR PACESETTER 1007P
TASF TATIANA 143T
GHDP MISS POLLED SHAQ

HUNTS HI-LITER 245G
LOGAN'S CHEERLEADER 280G
IVLS FARMER 4G
VORT HONOR ROLL
BR MIDLAND
EXLR REBECA 614H
YKCC POLLED SHAQ 747B
MURRAYS MISS POL 747 743X

BW 81 WW 554 YW 1151

CONSIGNED BY: DOUBLE B GRAIN FARM

AI 4-19-10 TO DHVO DEUCE 132R

PE 5-1-10 - 10-15-10 TO TASF TORTUGA 120T

This is one of the nice consignments from the Brubaker Family at Double B Grain Farm. The polled and black female is an excellent replacement female and she carries the service of DHVO Deuce 132R.



34

BLGF Tatianna 908W



35  **CLLL Black Pearl**



Ref  **MAGS Personal Best**
Dam of Lot 35

35 LIM-FLEX(75) • FEMALE • DOUBLE POLLED • HOMO BLACK
CLLL Black Pearl
03/18/2009 • CLLL322W • LFF1944553

CED	BW	WW	YW	MA	CEM	SC	ST	DOC	CW	RE	YG	MB	\$M
12	0.7	49	97	21	6	0.5		15	33	-0.08	0.35	0.38	56

BR MIDLAND
CLLL BLACK EMOTION 61S
EXLR EMOTIONS 610K

JCL LODESTAR 27L
MAGS PERSONAL BEST
VORD LUSCIOUS 101L

BW 75 WW 589 YW

TWIN VALLEY PRECISIONE161
BR ROYAL LASS 7036-19
EXLR POLLED RESOLVE 175G
DBDV EMOTIONS 311E
HUNT'S HI-LITER 245G
LOGAN'S CHEERLEADER 280G
LVLS FARMER 4G
VORD JASMINE

CONSIGNED BY: CIRCLE L LIMOUSIN

AI 6-16-10 TO CL BURBANK
CLLL Black Pearl is homozygous black and an excellent replacement female from the Circle L program. Her dam, MAGS Personal Best, was one of the great donors at Circle L Limousin. She is now in the Hayhook program, and this daughter is a perfected version of the great proven female.

36 LIM-FLEX(50) • FEMALE • DOUBLE POLLED • DOUBLE BLACK
FRBR LimFlex 935W
04/17/2009 • FRBR935W • LFF1956065

CED	BW	WW	YW	MA	CEM	SC	ST	DOC	CW	RE	YG	MB	\$M
8	-0.4	42	84	28	1								

GPFF BLAQUE RULON
SCGL HAIR BEAR 327N HB ET
NICO PINA COLADA

RITO 9M9 OF 2036SCOTCHCAP
T M F 9M9 S C KELLEY
SE 2936 OF 2000 PLUS I104

BW 70 WW YW 905

BLACK DIAMOND
QUAIL RUN RAMONA BP
COLE FIRST DOWN 46D
NICO POLLED PORSHA
SCOTCH CAP
LEACHMAN BLACKBIRD 2036
CIRCLE A 2000 PLUS
G A R SLEEP EASY 2936

CONSIGNED BY: FRIEND BROTHERS LIMOUSIN

AI 4-30-10 TO AUTO CIGAR 175E
PE 5-13-10 - 8-30-10 TO FRBR 855U
FRBR Lim - Flex 935W is one of the good Lim - Flex females in the offering. She has nicely balanced numbers and strong numbers for maternal.

37 LIM-FLEX(50) • FEMALE • POLLED • BLACK
FRBR LimFlex 916W
02/17/2009 • FRBR916W • LFF1956064

CED	BW	WW	YW	MA	CEM	SC	ST	DOC	CW	RE	YG	MB	\$M
3	2.3	47	91	24	1	0.2							

WIN VUE DAKOTA 149L
FRBR 452P
PRRK HEATHERS DELIGHT

BASIN MAX 602C
T O F MISS ERICA MAX 127
T O F MISS ERICA EXTRA

BW 79 WW 538 YW 869

EXLR DAKOTA 353G
RSBH MISS RUBY RED
WULES FOUNDATION 3497 F
PRRK WONDER GIRL 344C
G T MAXIMUM
BASIN ELINE ERICA 315U
G A R EXT 4404
T O F MISS ERICA 9M9

CONSIGNED BY: FRIEND BROTHERS LIMOUSIN

AI 4-5-10 TO WULF'S GUARDIAN
PE 5-13-10 - 8-30-10 TO FRBR 855U
This is another of the nice Lim - Flex females from the Friend program. She has great numbers from start to finish and she is a tremendous replacement female.

38 LIM-FLEX(50) • FEMALE • DOUBLE POLLED • DOUBLE BLACK
FRBR LimFlex 911W
02/04/2009 • FRBR911W • LFF1956063

CED	BW	WW	YW	MA	CEM	SC	ST	DOC	CW	RE	YG	MB	\$M
9	-1.3	39	79	25	1	0.4							

GPFF BLAQUE RULON
SCGL HAIR BEAR 327N HB ET
NICO PINA COLADA

RITO 9M9 OF 2036SCOTCHCAP
T M F 9M9 S C JOANN
G A R EVAS EMULATION 83

BW 68 WW 537 YW 876

BLACK DIAMOND
QUAIL RUN RAMONA BP
COLE FIRST DOWN 46D
NICO POLLED PORSHA
SCOTCH CAP
LEACHMAN BLACKBIRD 2036
EMULATION N BAR 5522
GAR EVAS R R TRAVELER 511

CONSIGNED BY: FRIEND BROTHERS LIMOUSIN

AI 4-30-10 TO AUTO CIGAR 175E
PE 5-13-10 - 8-30-10 TO FRBR 855U
Important genetics are available through the blood of this bred female. She is one of the nice groups of females from the Friend program.

39

PUREBRED • FEMALE • DOUBLE POLLED • DOUBLE BLACK

SOEA Bambi

06/01/2009 • SOEA46W • NPF1933705

CED	BW	WW	YW	MA	CEM	SC	ST	DOC	CW	RE	YG	MB	\$M
11	-0.5	47	90	21	5	0.2		16	27	0.61	-0.04	-0.01	44

COLE WOLF HUNT
IVLS TOP CRITERIA 8862P
IVLS8862M

JCL LODESTAR 27L
NICO STARS THE LIMIT
TUBB DOWNTOWN

BW 70 WW 676 YW

COLE FIRST DOWN 46D
COLE CATALINA 3309C
WZRK BIG KAHUNA 8046K
IVLS 3862G
HUNTS HI-LITER 245G
LOGAN'S CHEERLEADER 280G
LKCC TOMAHAWKS TOUCHDOWN
M&R SUR POL ALLOUETTE

CONSIGNED BY: OLD ENGLISH LIMOUSIN

AI 7-30-10 TO KRVN NASKAR

PE 9-5-10 - 9-30-10 TO EOEА BATTLESHIP

SOEA Bambi is a curve bending female of balanced EPDs and performance. The daughter of IVLS Top Criteria 8862P is from a big-numbered daughter of JCL Lodestar 27L. This female is a totally packaged individual for a progressive breeder.



39

SOEA Bambi

40

PUREBRED • FEMALE • POLLED • BLACK

CLLL 353W

04/25/2009 • CLLL353W

CED	BW	WW	YW	MA	CEM	SC	ST	DOC	CW	RE	YG	MB	\$M
8	0.7	40	78	19	7	0.7	20	15	18	0.5	-0.01	-0.10	38

GPF BLAQUE RULON
KRVN NASKAR 013N
WL JU JU GAL 149J

COLE FIRST DOWN 46D
ANLC 15J
CHAZ MISS ROXANNE 92C

BW WW YW

BLACK DIAMOND
QUAIL RUN RAMONA BP
COLE FIRST DOWN 46D
CHR GOSSIP GAL
LKCC TOMAHAWKS TOUCHDOWN
2 155P
PLLP POLLED WEBSTER 30X
EAFM NOEL E27Y

CONSIGNED BY: CIRCLE L LIMOUSIN

AI 8-21-10 TO CL BURBANK

This female is an exceptional daughter of KRVN Naskar from ANLC 15J, the full sister to CHAZ First Choice. This is a nicely constructed female and she carries the service of the great CL Burbank.



40

CLLL 353W

41

PUREBRED • FEMALE • DOUBLE POLLED • BLACK

EOEA Tiffany

03/19/2009 • EOEА40W • NPF1933703

CED	BW	WW	YW	MA	CEM	SC	ST	DOC	CW	RE	YG	MB	\$M
7	2.6	45	86	24	4	0.4			11	0.58	-0.19	-0.12	41

LESF ASPHALT 9N
EXLR RODEO DRIVE 743R
EXLR 825H

DVFC ARROWHEAD 1004J
MINE BARE NECESSITY 1271L
WULF'S COLORFUL 3007C

BW 85 WW 602 YW

GPF BLAQUE RULON
GPF EXTRA SWEET ELITE
COLE FIRST DOWN 46D
MS SY LINEBACKER 596 V
WULF'S GUARDIAN 5074G
SIVL SABLE COOKIE 381E
WULF'S POLLED PROGRESS
MCM FANCY CMH 451A

CONSIGNED BY: OLD ENGLISH LIMOUSIN

AI 6-11-10 TO WULF'S SIRLOIN 3172S

EOEA Tiffany is sired by the National Western Grand Champion Bull, EXLR Rodeo Drive 743R. She has a great pedigree coupled with a perfect conformation package.

42

PUREBRED • FEMALE • DOUBLE POLLED • BLACK

RTTB Trinda 710T

06/12/2007 • RTTB710T • NPF1886717

CED	BW	WW	YW	MA	CEM	SC	ST	DOC	CW	RE	YG	MB	\$M
7	3.1	57	99	28	10	1.1	20	26	33	0.55	-0.08	-0.04	46

IVLS POLLED JUSTICE 0601E
HUNT MR JOCK 44J
HUNT MISS GIGGLE 129G

WULFS HOMESTEAD 3266
WULFS LIBRA 1244L
WULFS SILVER POLISH 2051B

BW 90 WW YW

IVLS POLLED BLACK JACK
IVLS JENI 601V
HUNT DEPEND 58D
CLHB MISS SUNDANCE 293B
WULFS EXPLOSION 0184E
MISS WULFETTE 3266C
POLLED SILVERSTONE 7089Y
MISS WOLFETTE 6044U

CONSIGNED BY: PLEASANT HOME CATTLE CO

AI 8-29-10 TO WULF'S TITUS

This is a high producing young cow with a lot of future in her. She has outstanding growth potential and passes that along to her calf. Her 2010 bull calf is in the bull pen for sale this spring.

43

PUREBRED • FEMALE • DOUBLE POLLED • DOUBLE BLACK

NICO Polled What A Lady

10/28/2008 • NICO112U • NPF1944433

CED	BW	WW	YW	MA	CEM	SC	ST	DOC	CW	RE	YG	MB	\$M
9	0.2	41	78	21	1	1.0		13	20	0.48	0.02	-0.09	39

GPFF BLAQUE RULON
KRVN NASKAR 013N
WL JU JU GAL 149J

BLACK DIAMOND
QUAIL RUN RAMONA BP
COLE FIRST DOWN 46D
CHR GOSSIP GAL
EXLR POLLED RESOLVE 175G
EXLR 199H
ANDERS JAG
NICO DESIRAE

EXLR EXCELLANTE 251L
NICO BLACK BEAUTY
NICO LENE HP/B

BW 73 WW 648 YW

CONSIGNED BY: MAPLE LANE FARM

AI 5-29-10 TO WULF'S SIRLOIN 3172 S

NICO Polled What A Lady is a daughter of the popular KRVN Naskar 013N. The good profiling female is fault-free in her genetic design and phenotypic molding. She carries the service of the easy calving Wulf's Sirloin 3172S.



43



NICO Polled What A Lady

44

PUREBRED • FEMALE • HOMO POLLED • DOUBLE BLACK

CLLL 159T

05/10/2007 • CLLL159T • NPF1909272

CED	BW	WW	YW	MA	CEM	SC	ST	DOC	CW	RE	YG	MB	\$M
5	3.3	50	88	19	-1	0.9		14	11	0.70	-0.16	-0.16	40

BLACK DIAMOND
GPFF BLAQUE RULON
QUAIL RUN RAMONA BP

CANE RIDGE BLACK DRAK
WULFS DIADEM 4260D
LKCC TOMAHAWKS TOUCHDOWN
AMBL FAVORITE GIRL 36W
GPFF BLAQUE RULON
GPFF EXTRA SWEET ELITE
DBRO ZIPPER 113F
IVLS REBECA

LESF ASPHALT 9N
OKF RITE RESPONSE 290R
EXLR REBECA 311H

BW 74 WW 502 YW

CONSIGNED BY: CIRCLE L LIMOUSIN

AI 6-25-10 TO HUNT MR JOCK

This daughter of GPFF Blaque Rulon is homozygous polled and from one of the strong cow families from the Oak Knoll program. She carries the outcross service of HUNT Mr Jock.



44



CLLL 159T

45

PUREBRED • FEMALE • DOUBLE POLLED • DOUBLE BLACK

BEHM Blaque Willow

05/23/2009 • BEHM523W • NPF1951256

CED	BW	WW	YW	MA	CEM	SC	ST	DOC	CW	RE	YG	MB	\$M
4	3.8	48	86	20	0	0.3							

GPFF BLAQUE RULON
EHAM BLAQUE ROOSTER
CLLL RLEB JESSICA

COLE FIRST DOWN 46D
COLE CATALINA 3309C
WZRK BIG KAHUNA 8046K
IVLS 3862G
HUNTS HI-LITER 245G
LOGAN'S CHEERLEADER 280G
LKCC TOMAHAWKS TOUCHDOWN
M&R SUR POL ALLOUETTE

WEAM DURRANGO
BEHM KARLEY 02
MCDO POLLED KARLEY

BW 80 WW 541 YW

CONSIGNED BY: CIRCLE L LIMOUSIN

AI 8-21-10 TO CL BURBANK

A solid female here with a solid pedigree. She carries the service of the popular CL Burbank.



45



BEHM Blaque Willow

46

LIM-FLEX(50) • FEMALE • POLLED • DOUBLE BLACK

EBFL Ironsides 207T

08/24/2007 • EBFL207T • LFF1902617

CED	BW	WW	YW	MA	CEM	SC	ST	DOC	CW	RE	YG	MB	\$M
11	-1.5	39	79	34	3	-0.1							

RITO 616 OF 4B20 6807
SINCLAIR OPEN RANGE 2Q23
S C C MAJESTY K024 853

D H D TRAVELER 6807
RITA 4B20 OF OFB1
N BAR PRIME TIME D806
MAJESTY 853 OF 5439 4465
WD SAM 801K
MANILA 4J
BLACK ROADRUNNER
SBFL MISS JETSET

LOJW IRONSIDES 3P
CORL MISS IRONSIDES 21G
OAKLEAF ANNIE 13X

BW	72	WW	568	YW	792
----	----	----	-----	----	-----

CONSIGNED BY: ELDERS BRANCH FARMS

PE 3-5-10 -5-12-10 TO TMCK BALANCER 173U - SAFE

The Elder's Branch program has been built around exceptional breeding females such as this Lim - Flex female. She carries the service of the popular TMCK Balancer 173U for a double-bred Lim - Flex calf.



46

EBFL Ironsides 207T

47

PUREBRED • FEMALE • DOUBLE POLLED • DOUBLE BLACK

NICO Dottie BP

09/21/2007 • NICO31T • NPF1958616

CED	BW	WW	YW	MA	CEM	SC	ST	DOC	CW	RE	YG	MB	\$M
4	2.4	51	97	21	3	0.8	22	26	32	0.53	-0.07	0.03	47

COLE FIRST DOWN 46D
D&M ENDZONE 3J
D&M MISS POLLED PEBBLES

LKCC TOMAHAWKS TOUCHDOWN
2 155P
HC AFTER HOURS HCR 43A
D&M MISS MERCEDES 0190U
WADDLES COBALT 3106
TNUH MISS C245
NMCC POLLED BLACK POWDER
TOPS KATHY 88 TK48

HUNTS HI-LITER 245G
GPFF BLAQUE HIGH LITE
GPFF SERENADE

BW	82	WW		YW	1040
----	----	----	--	----	------

CONSIGNED BY: MAPLE LANE FARM

AI 7-8-10 TO WLR DIRECT HIT 009R

NICO Dottie BP is by the highly respected D&M Endzone 3J. The sons and daughters of this good-breeding son of COLE First Down 46D are among the breeds most appreciated. She traces back to the GPFF Serenade female that has anchored the Maple Lane program.



47

NICO Dottie BP

48

PUREBRED • FEMALE • DOUBLE POLLED • BLACK

JLWM Honey Dipper 6120S

04/01/2006 • JLWM6120S • NPF1833396

CED	BW	WW	YW	MA	CEM	SC	ST	DOC	CW	RE	YG	MB	\$M
11	0.5	47	86	26	4	0.3	23	20	17	0.65	-0.19	-0.05	44

COLE FIRST DOWN 46D
COLE WULF HUNT
COLE CATALINA 3309C

LKCC TOMAHAWKS TOUCHDOWN
2 155P
MAYS BLACK JET
COLE 21 R
WULFS RAMBLER 8400X
YKCC MISS IRONSIDE 110NS
CRAFTSMAN 9021S
TEXTS STAR DREAM GIRL

CANE RIDGE POLLED WYATT
CORL GOOD GIRL 74G
CANE RIDGE DREAM GIRL 928

BW	80	WW	529	YW	933
----	----	----	-----	----	-----

CONSIGNED BY: JP'S LEE HILL FARMS

AI 12-15-10 TO KYLD DAYTONA 730T

JLWM Honey Dipper 6120S is a broody and productive daughter of COLE Wulf Hunt. She is from a female that has been one of the most productive donor females at JP's Lee Hill Farms. She will calve by sale day to the exciting KYLD Daytona 730T.



Ref

KYLD Daytona

Service Sire to Lot 48

49

PUREBRED • FEMALE • POLLED • RED
BGAR Big Red 143S

03/11/2006 • BGAR143S • NPF1851937

CED	BW	WW	YW	MA	CEM	SC	ST	DOC	CW	RE	YG	MB	\$M
7	1.6	31	61	29	5	0.3			14	0.42	-0.08	-0.06	38

DVFC COOKIE MONSTER 108H
 EXLR NAVIGATOR 7298N
 EXLR ANNIE 080J

LOJW IRONSIDES 3P
 CORL MISS IRONSIDES 21G
 OAKLEAF ANNIE 13X

BW WW 585 YW

CHAZ FIRST CHOICE 6004F
 SILV ANGEL COOKIE 140D
 EXLR POLLED RESOLVE 175G
 TRAK EXLR ANNIE
 WD SAM 801K
 MANILA 4J
 BLACK ROADRUNNER
 SFBL MISS JETSET

CONSIGNED BY: ELDERS BRANCH FARM

PE 7-2-10 - 9-1-10 TO TMCK BALANCER 173U

This red cow will have a polled black calf by TMCK Balancer 173U.



49

BGAR Big Red 143S

50

PUREBRED • FEMALE • POLLED • BLACK
TMCK Prudence 24S

10/02/2006 • KJHG24S • NPF1851007

CED	BW	WW	YW	MA	CEM	SC	ST	DOC	CW	RE	YG	MB	\$M
5	2.6	51	80	19	1	-0.1		19	36	0.84	-0.16	0.05	48

COLE WOLF HUNT
 WULFS NOBEL PRIZE 3861N
 WULF'S CASUAL 3161C

COLE MAGNUM 15M
 LFRO PRUDENCE 489P
 TUBB BROADWAY 865H

BW 80 WW 605 YW

COLE FIRST DOWN 46D
 COLE CATALINA 3309C
 WULF'S HOME RUN 9226AA
 MISS WOLFETTE 8021K
 ANDERS JAG
 COLE 8117H
 EXLR BROADWAY 041E
 ZEBO RED POLL QUEEN 377Y

CONSIGNED BY: PLEASANT HOME CATTLE CO.

AI 8-5-10 TO WULF'S TITUS

This is a young cow with balanced numbers and a solid maternal pedigree. Excellent disposition and a good solid mama cow.



50

TMCK Prudence 24S

51

PUREBRED • FEMALE • HOMO POLLED • HOMO BLACK
Muscles Raquel 513R

05/01/2005 • MIVA513R • NPF1811189

CED	BW	WW	YW	MA	CEM	SC	ST	DOC	CW	RE	YG	MB	\$M
8	0.0	44	77	28	3	0.8	19	17	5	0.55	-0.21	-0.10	41

BLACK DIAMOND
 GPFF BLAQUE RULON
 QUAIL RUN RAMONA BP

WULFS FANFARE 4055F
 EXLR BLACK MAGIC 778H
 EXLR 755F

BW 77 WW 598 YW 1000

CANE RIDGE BLACK DRAK
 WULFS DIADEM 4260D
 LKCC TOMAHAWKS TOUCHDOWN
 AMBL FAVORITE GIRL 36W
 THAWKS BLACK FRONTIER
 WULFS DELTA DAWN 4055D
 WULF'S COUNT DOWN 9251C
 QUAIL RUN QUEEN BP

CONSIGNED BY: CIRCLE L LIMOUSIN

AI 6-7-10 TO CL BURBANK

This homozygous black and homozygous polled female has been one of the strongest family lines in the industry. The female carries the service of CL Burbank.



51

Muscles Raquel 513R

52

PUREBRED • FEMALE • DOUBLE POLLED • DOUBLE BLACK

MSER Kaela R34

10/31/2005 • MSERR34R • NPF1828080

CED	BW	WW	YW	MA	CEM	SC	ST	DOC	CW	RE	YG	MB	\$M
8	0.1	41	71	27	2	0.4		7	8	0.17	0.05	0.07	44

RADS BLACK PRODIGY
EXLR NACHO 044N
EXLR PUDGE 207L

DVFC PREMIUM 104H
DVFC RACEY RUMORS 210K
SIVL DEMI 467E

BW 70 WW 514 YW 950

COLE FIRST DOWN 46D
RADS POLL BLACK POWDER I
WULFS FANFARE 4055F
EXAR PUDGE 5178
SIVL BEEF 341E
LOJW IRONSIDE CHARM 411S
YKCC POLLED TOUCHTONE750B
EDGE ATLANTICS OLY 107B

CONSIGNED BY: ELDERS BRANCH FARMS

PE 3-5-10 - 5-12-10 TO TMCK BALANCER 173U

This daughter of EXLR Nacho 044N will have a multi-generational Lim - Flex calf sired by TMCK Balancer 173U.



52

MSER Kaela R34

53

PUREBRED • FEMALE • POLLED • BLACK

DLRF 256R

09/14/2005 • DLR256R • NPF1808460

CED	BW	WW	YW	MA	CEM	SC	ST	DOC	CW	RE	YG	MB	\$M
8	-0.1	38	69	28	6	0.2		9	15	0.10	0.05	0.09	44

RADS BLACK PRODIGY
EXLR NACHO 044N
EXLR PUDGE 207L

PLLP POLLED WEBSTER 30X
POLL SHERI 341 B
KLR HIGH STEPPER

BW 70 WW 514 YW 950

COLE FIRST DOWN 46D
RADS POLL BLACK POWDER I
WULFS FANFARE 4055F
EXAR PUDGE 5178
POLLED PACK LEADER 1182U
D&M MISS MICHELIN 719U
BLACK INNOVATOR
MF ROMANTIC

CONSIGNED BY: ELDERS BRANCH FARMS

PE 3-5-10 - 5-12-10 TO TMCK BALANCER 173U

DLRF 256R has been a good member of the Elder's Branch cow herd.



53

DLRF 256R

54

PUREBRED • FEMALE • DOUBLE POLLED • RED

JLWM Misty Eyes 5116R

04/01/2005 • JLWM5116R • NPF1793167

CED	BW	WW	YW	MA	CEM	SC	ST	DOC	CW	RE	YG	MB	\$M
7	1.5	35	78	18	3	0.9		8	-10	0.21	-0.06	-0.17	35

AUTO BLACK DAKOTA 129J
EXLR MAXIMUS 610M
EXLR REBECA 614H

WULFS GUARDIAN 5074G
H&H POLLED RUBY
CANE RIDGE TEMPTRESS 008A

BW 88 WW 514 YW 950

EXLR DAKOTA 353G
DFLC JET SET BPC 34Y
WULFS DAWSON 4421D
IVLS REBECA
WULFS RAMBLER 8400X
WULFS EXAMPLE 5074E
SY POLLED REFLECTION
CANE RIDGE TEMPTRESS 404W

CONSIGNED BY: JP'S LEE HILL FARMS

AI 12-18-09 TO KRNV PABLO 011P - SAFE

This powerful cow will have a calf by the sale day to KRNV Pablo 011P. She traces to the highly regarded Temptress cow family.

55

PUREBRED • FEMALE • POLLED • HOMO BLACK

TTRU Playgirl 407P

04/01/2004 • TTRU407P • NPF1768156

CED	BW	WW	YW	MA	CEM	SC	ST	DOC	CW	RE	YG	MB	\$M
11	0.1	38	71	22	-1	0.4	21	14	14	0.44	-0.14	-0.14	37

NICO POLLED LEGACY
KRMCC BLACK LEGACY 917B
HOLIJO 103

WULFS GUARDIAN 5074G
EXLR ALLIANCE 326K
EXLR ALLIANCE 337G

BW 73 WW 565 YW 898

WLCC DOLLAR BILL
MAPLE LANE'S NICOLE
WS VISA 87J
HOLI JO 307
WULFS RAMBLER 8400X
WULFS EXAMPLE 5074E
WULF'S COUNT DOWN 9251C
PMD B ALLIANCE

CONSIGNED BY: FRIEND BROTHERS LIMOUSIN

PE 1-16-09 - 4-30-10 TO SCGL HAIR BEAR 327N

TTRU Playgirl 407P is from the same cow family that produced the National Champion EXLR Polled Benchmark.

56

PUREBRED • FEMALE • DOUBLE POLLED • BLACK

TYSR Polly 0204P

07/18/2004 • TYSR0204P • NPF1784058

CED	BW	WW	YW	MA	CEM	SC	ST	DOC	CW	RE	YG	MB	\$M
5	0.9	39	78	25	-2	0.2		23	10	0.51	-0.15	-0.13	38

JCL BLACK OUT
 CLLL BLACK WATCH 112M HBP
 GPF EXTRA SWEET NADINE

WULF'S GUARDIAN 5074G
 RTTB MARIA 1902M
 MISS WULFETTE 9019J

LKCC TOMAHAWKS TOUCHDOWN
 JCL MADELINE
 LKCC TOMAHAWKS TOUCHDOWN
 HC EXTRAORDINARY HCR 61X
 WULF'S RAMBLER 8400X
 WULF'S EXAMPLE 5074E
 COLE WULF HUNT
 MISS WULFETTE 7058G

BW 73 WW YW

CONSIGNED BY: PLEASANT HOME CATTLE CO

AI 8-10-10 TO WULF'S TITUS

Very attractive, high producing female out of CLLL Black Watch 112M. She came out of a Guardian cow line on the bottom side, therefore she is loaded with maternal ability. Her 2010 bull calf by Wulf's Titus is in the Bull sale pen for this spring.

58

PUREBRED • FEMALE • HOMO POLLED • DOUBLE BLACK

JCL Mariella

01/23/2002 • JCLC1M • NPF1670346

CED	BW	WW	YW	MA	CEM	SC	ST	DOC	CW	RE	YG	MB	\$M
0	5.0	44	82	20	-2	0.9	16	7	15	0.11	0.05	0.07	45

KRMC BLACK LEGACY 917B
 MAGS JUMANJI
 MAGS BLACK & SATIN

JCL BLACK OUT
 JCL MEG
 JCL MEGAN

NICO POLLED LEGACY
 HOLIJO 103
 PLLP POLLED WEBSTER 30X
 WLCC XPOSE 41X
 LKCC TOMAHAWKS TOUCHDOWN
 JCL MADELINE
 SY BONANZA
 JCL MOLLY

BW 71 WW 626 YW

CONSIGNED BY: CIRCLE L LIMOUSIN

AI 7-31-10 TO KAJO RESPONDER

The homozygous polled daughter of MAGS Jumanji has been a donor in the Circle L program.

59

PUREBRED • FEMALE • HOMO POLLED • BLACK

TRTF Kortney's Lady 307M

02/21/2002 • TRTF307M • NPF1681852

CED	BW	WW	YW	MA	CEM	SC	ST	DOC	CW	RE	YG	MB	\$M
12	2.1	32	63	23	5	-0.2	19	15	-8	0.29	-0.15	-0.10	37

EXLR POLLED BENCHMARK709G
 EXLR LIMITED EDITION 765J
 WULF'S GLENDA 7021G

SIVL DVFC BRANDING IRON
 LOGAN'S KORTNEY 307K
 TRIF JENNIFER 265F

WULF'S DAWSON 4421D
 PMDB ALLIANCE
 TUBB GRINDER 749D
 WULF'S EXTRA SPECIAL 5132E
 LOJW IRONSIDES 3P
 ADKL HOLLYWOOD 33C
 CANE RIDGE POLL STACKER
 FPHP PANZY'S PAL 166X

BW 78 WW 668 YW 1073

CONSIGNED BY: CIRCLE L LIMOUSIN

AI 6-16-10 TO CL BURBANK

This has been a great producing daughter of EXLR Limited Edition. She sells safe bred to CL Burbank..

57

PUREBRED • FEMALE • DOUBLE POLLED • RED

JLWM Paper Roses 4253P

09/22/2004 • JLWM4253P • NPF1774791

CED	BW	WW	YW	MA	CEM	SC	ST	DOC	CW	RE	YG	MB	\$M
8	-0.1	29	64	19	3	0.4	23	6	-7	0.16	-0.10	-0.02	39

EXLR DAKOTA 353G
 MAGS KABOOM
 MAGS GO IN STYLE

LOJW IRONSIDES 3P
 EXLR JET SET 120G
 DFCL JET SET BPC 34Y

WULF'S COUNT DOWN 9251C
 CANE RIDGE DAPHNE 011D
 COLE FIRST DOWN 46D
 WULF'S MANDARIN 1121A
 WD SAM 801K
 MANILA 4J
 GENERAL LEE LOJW 40S
 DFCL BPC 20U

BW 70 WW 553 YW 953

CONSIGNED BY: JP'S LEE HILL FARMS

AI 6-10-10 TO WULF'S SIRLOIN 3172S

PE 7-1-10 - 8-18-10 TO JLWM DIRE STRAYTS

JLWM Paper Roses 4253P has had a long and successful career at JP's Lee Hill Farms. She is one of the many good producing daughters of MAGS Kaboom.



58

JCL Mariella



59

TRTF Kortney's Lady 307M

60

LIM-FLEX(44) • BULL • HOMO POLLED • HOMO BLACK

EBFL 303W

04/14/2009 • EBFL303W • LFM1927350

CED	BW	WW	YW	MA	CEM	SC	ST	DOC	CW	RE	YG	MB	\$M
9	-0.1	49	91	35	-1	0.8							0

EXLR POLLED RESOLVE 175G
EXLR EXCELLANTE 251L
EXLR 199H

CORLE FERNS PRIDE
CORL MISS MINDY C337
CORL MINDY 155

BW 82 WW 738 YW 1260

KRMC BLACK LEGACY 917B
LKCC SMITH CATTLE 110C
WULFS FANFARE 4055F
EXLR 558F
A A R RAINMAKER 1448
A A R FERNS PRIDE 2279
S A F FOCUS OF E R
NA MISS MINDY 9100 OF CN

CONSIGNED BY: ELDERS BRANCH FARMS

This homozygous polled and homozygous black son of EXLR Excellante 251L is from a great Angus cow in the Elder's Branch program. The Lim - Flex sire is ready for heavy service.



60

EBFL 303W

61

PERCENTAGE • BULL • DOUBLE POLLED • DOUBLE BLACK

DBGR Dream Train 938W

12/04/2009 • BLGF938W • NXM1944725

CED	BW	WW	YW	MA	CEM	SC	ST	DOC	CW	RE	YG	MB	\$M
8	0.5	39	79	23	3	0.4		11	6	0.03	0.11	0.13	46

EXLR PACESETTER 1007P
TASF TORTUGA 120T
EXLR FOREVER 220K

EXLR NACHO 044N
DBGR DREAM GIRL 725T
DLRF 209R

BW 88 WW 728 YW

BR MIDLAND
EXLR REBECA 614H
WULFS GUARDIAN 5074G
SIVL FOREVER IRONSIDE503E
RADS BLACK PRODIGY
EXLR PUDGE 207L
EXLR NEW GENERATION 071M
CORL DREAM OF ME 158H

CONSIGNED BY: DOUBLE B GRAIN FARMS

This a powerful percentage son of TASF Tortuga 120T from the Double B Grain Farm. This is a real herd sire rich in strong Carcass EPDS.



61

DBGR Dream Train 938W

62

PERCENTAGE • BULL • HOMO POLLED • HOMO BLACK

CLLL Remorse 912U

09/15/2008 • CLLL912U • NXM1934307

CED	BW	WW	YW	MA	CEM	SC	ST	DOC	CW	RE	YG	MB	\$M
6	2.4	49	91	20	1	0.5		15	26	0.07	0.15	0.05	45

JCL LODESTAR 27L
MAGS REMOTE
MAGS 13M

JCL BLACK OUT
QUAIL RUN BLACK MONICA BP
LKCC 280Y

BW 78 WW 709 YW 1330

HUNTS HI-LITER 245G
LOGAN'S CHEERLEADER 280G
MAGS JUMANJI
WK QUEEN LASSIE 0332
LKCC TOMAHAWKS TOUCHDOWN
JCL MADELINE
LKCC SMITH CATTLE 1049V
LKCC MISTY DAWN 778S

CONSIGNED BY: CIRCLE L LIMOUSIN

This is an excellent double homozygous herd sire. His full sisters were among the best in the Circle L Dispersal last December. He is from the highly proven Quail Run Monica by MAGS Remote.



Ref

TMCK Balancer 173U

Service sire to many of the Elder's Branch Farms female consignments

KEITH KISSEE



**KK SEEDSTOCK CONSULTANTS
SPECIALIZED SALES**

2300 Monument Ave., Richmond, VA 23220
Keith Kisse • Cell: 817-821-6263
Ph: 804-353-2220 • Fax: 804-353-2221
email: kkesadstock@comcast.net

First Class
Presorted
US Postage Paid
Fort Worth, Texas
Permit # 356

